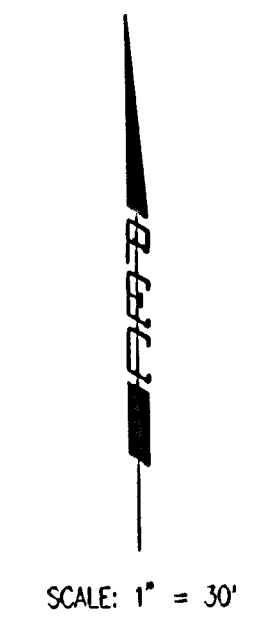
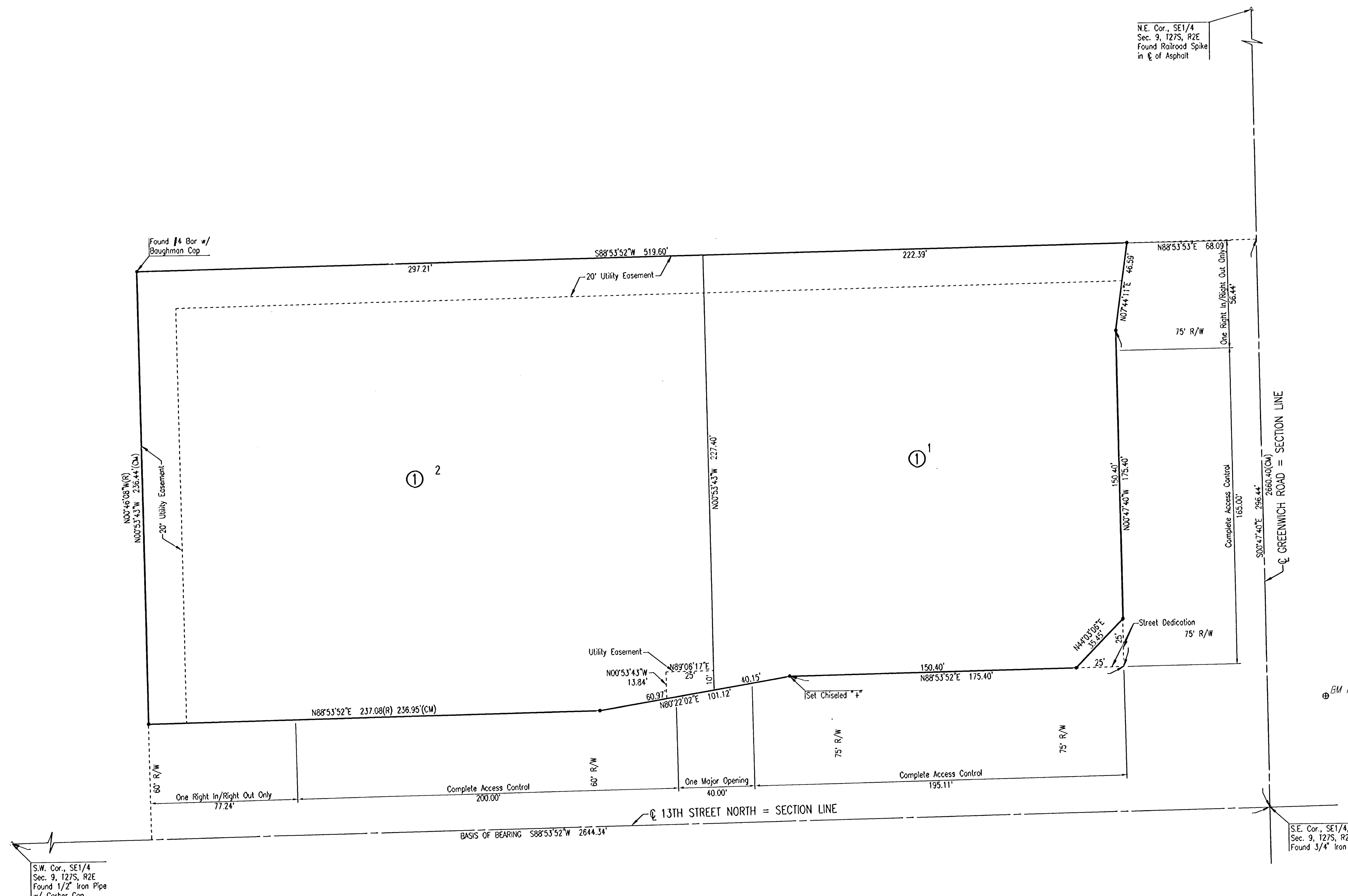


# HOME BANK & TRUST COMPANY ADDITION

AN ADDITION TO WICHITA, SEDGWICK COUNTY, KANSAS



SCALE: 1" = 30'

PROJECT BENCHMARK:  
CHISELED "F" WEST CURB ISLAND AT THE NORTHEAST CORNER OF  
GREENWICH ROAD AND 13TH STREET NORTH.  
ELEVATION = 1388.15 N.C.V.D.  
= 198.75 CITY DATUM

- LEGEND**
- 1/2" REBAR W/PEC CAP UNLESS OTHERWISE NOTED
  - R RECORD BEARING AND DISTANCE
  - CM CALCULATED FROM MEASUREMENT
  - BM Bench Mark/Vertical Control Point

DSNR: MDK OPER: BEJ SCALE: 1=30.00  
 C:\2005\05582\05582-000-C-Plat01 11-01-2005 10:46:55 am

	Revision	By	Date
LATERAL 377 FOUR MILE CREEK SEWER <b>PLAT</b> (HOME BANK & TRUST COMPANY ADDITION) JAMES L. ARMOUR, P.E. - CITY ENGINEER CITY OF WICHITA PROJECT NO. 468-84050			
<b>Professional Engineering Consultants, P.A.</b> 303 S. TOPEKA • WICHITA, KANSAS 67202 316-262-2691 • FAX 316-262-3003			
Designed by	MDK	Job No.	35-05582-042
Drawn by		Date	OCTOBER 2005
			Sht. 3 of 13

