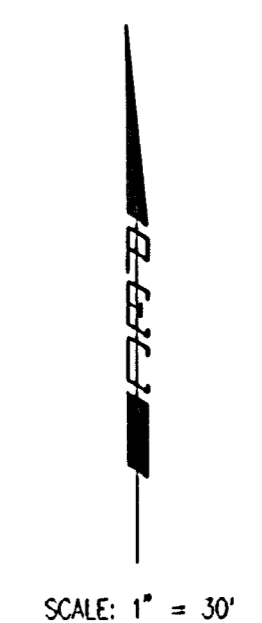
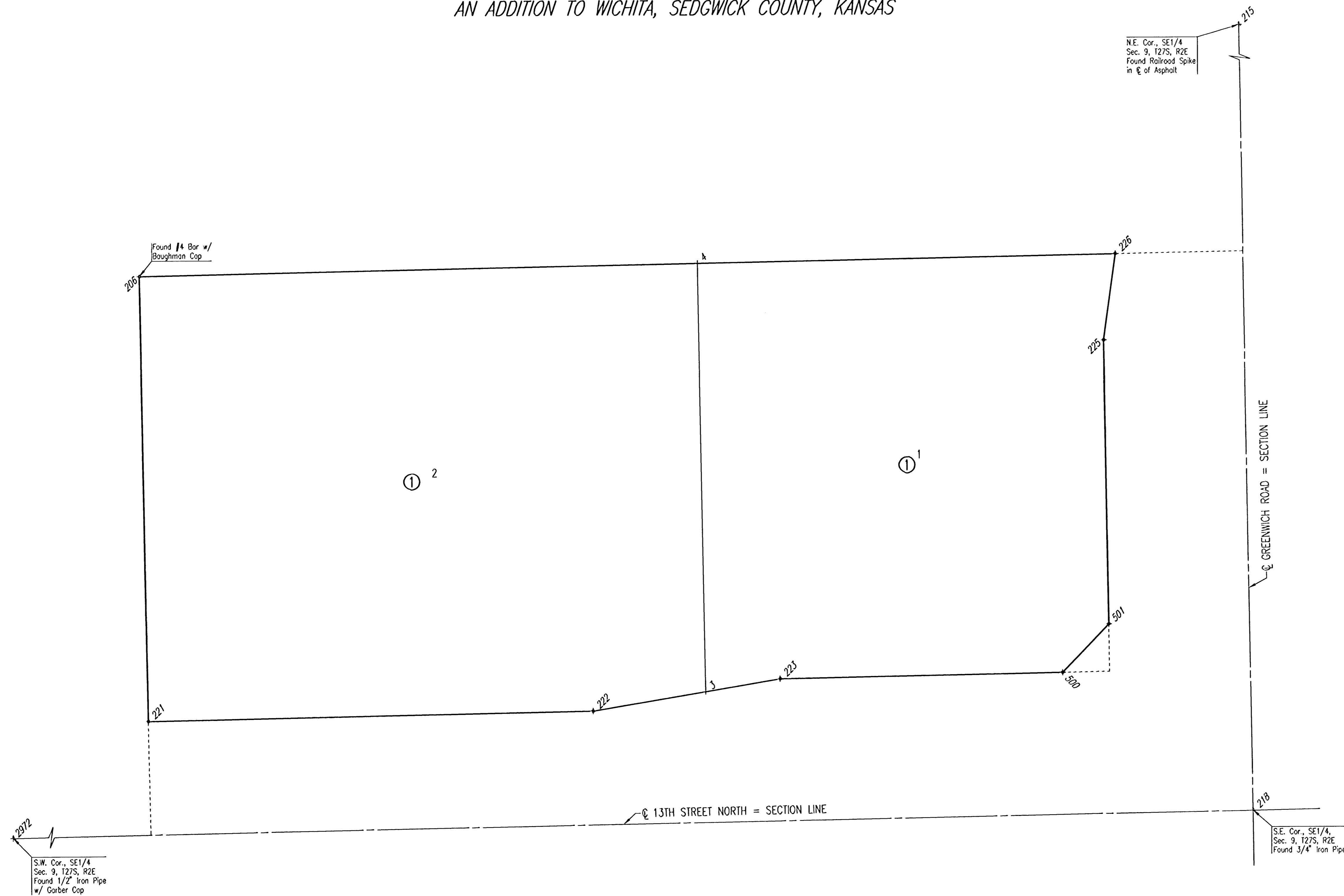


HOME BANK & TRUST COMPANY ADDITION

AN ADDITION TO WICHITA, SEDGWICK COUNTY, KANSAS



COORDINATE LIST		
POINT	NORTH	EAST
J	382,041.8619	2,373,862.2839
4	382,269.2319	2,373,858.7308
206	382,263.5154	2,373,561.5754
215	384,638.6880	2,374,116.3770
218	381,978.4040	2,374,153.2660
221	382,027.1025	2,373,565.2698
222	382,031.6600	2,373,802.1757
223	382,048.5807	2,373,901.8699
225	382,227.3375	2,374,074.8055
226	382,273.5093	2,374,081.0780
500	382,051.4735	2,374,052.2421
501	382,076.9519	2,374,076.8908
2972	381,927.5430	2,371,509.4110

x = COORDINATE POINT NO.

DSNR: MDK OPER: REJ SCALE: 1"=30.00
C:\2005\05582\05582-000-PROJECT COORDINATES 11-01-2005 10:48:42 am

	Revision		By	Date
LATERAL 377 FOUR MILE CREEK SEWER PROJECT COORDINATES JAMES L. ARMOUR, P.E. - CITY ENGINEER CITY OF WICHITA PROJECT NO. 468-84050				
Professional Engineering Consultants, P.A. 303 S. TOPEKA • WICHITA, KANSAS 67202 316-262-2691 • FAX 316-262-3003				
	Designed by MDK Drawn by TLS	Job No. 35-05582-042 Date OCTOBER 2005	Sht. 5 of 13	