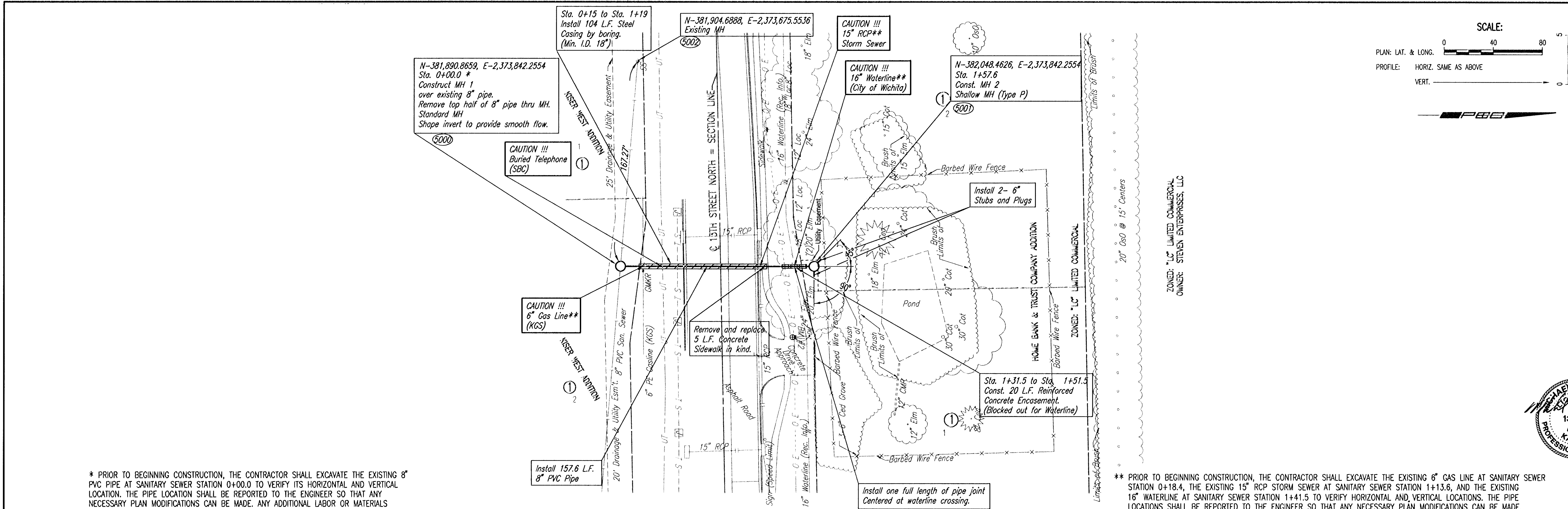


PLAN	CHECKED	CHECKED
BY		
DATE		

PROFILE	CHECKED	CHECKED
BY		
DATE		

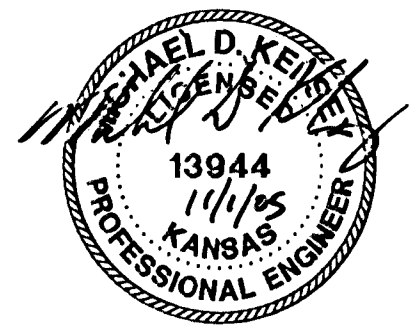
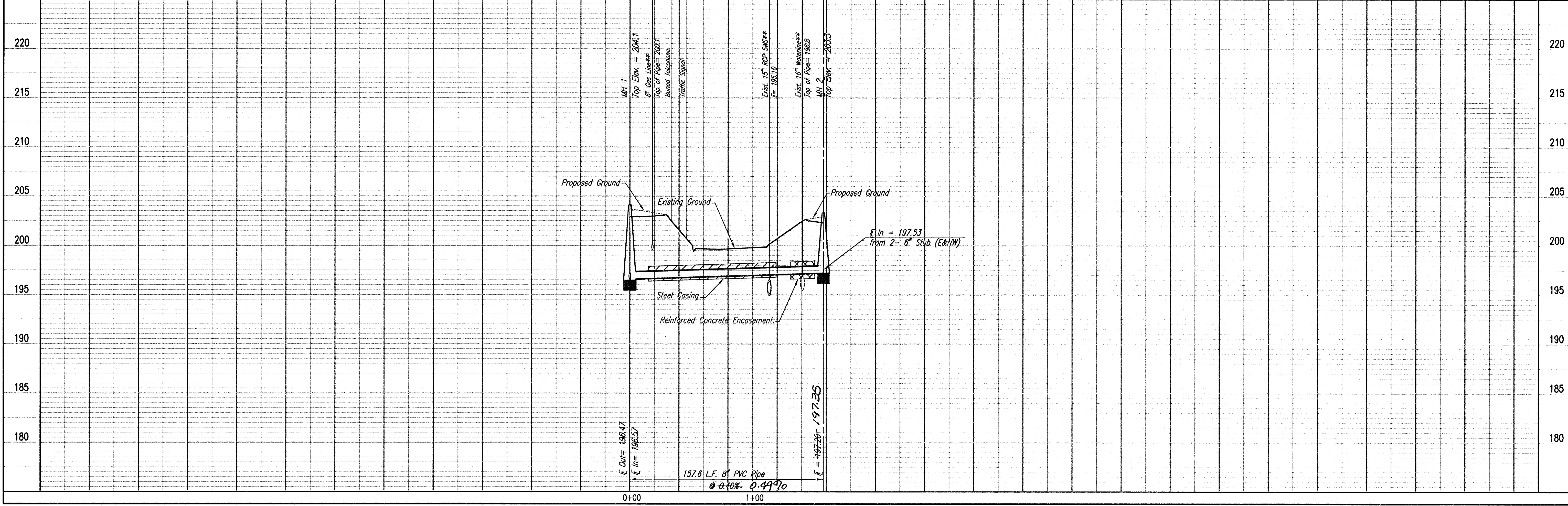
DSNR: MDK OPER: REF SCALE: 1"=40.0'
 G:\2005\05582\05582-000-C-SSPP01 11-01-2005 11:24:39 am



* PRIOR TO BEGINNING CONSTRUCTION, THE CONTRACTOR SHALL EXCAVATE THE EXISTING 8" PVC PIPE AT SANITARY SEWER STATION 0+00.0 TO VERIFY ITS HORIZONTAL AND VERTICAL LOCATION. THE PIPE LOCATION SHALL BE REPORTED TO THE ENGINEER SO THAT ANY NECESSARY PLAN MODIFICATIONS CAN BE MADE. ANY ADDITIONAL LABOR OR MATERIALS NECESSARY TO COMPLETE THE CONNECTION SHALL BE CONSIDERED SUBSIDIARY TO THE PROJECT.

** PRIOR TO BEGINNING CONSTRUCTION, THE CONTRACTOR SHALL EXCAVATE THE EXISTING 6" GAS LINE AT SANITARY SEWER STATION 0+18.4, THE EXISTING 15" RCP STORM SEWER AT SANITARY SEWER STATION 1+13.6, AND THE EXISTING 16" WATERLINE AT SANITARY SEWER STATION 1+41.5 TO VERIFY HORIZONTAL AND VERTICAL LOCATIONS. THE PIPE LOCATIONS SHALL BE REPORTED TO THE ENGINEER SO THAT ANY NECESSARY PLAN MODIFICATIONS CAN BE MADE. ANY ADDITIONAL LABOR OR MATERIALS NECESSARY TO COMPLETE THE WORK SHALL BE CONSIDERED SUBSIDIARY TO THE PROJECT.

SANITARY SEWER LINE NO. 1



Professional Engineering Consultants, P.A.
 303 S. TOPICKA • WICHITA, KANSAS 67202
 316-262-2691 • FAX 316-262-3003

Job No. 35-05582-042 Date OCTOBER 2005

Designed By MDK Drawn By TJS

LATERAL 377
 FOUR MILE CREEK SEWER
 SANITARY SEWER LINE NO. 1
 JAMES L. ARMOUR, P.E. - CITY ENGINEER
 CITY OF WICHITA PROJECT NO. 488-84050