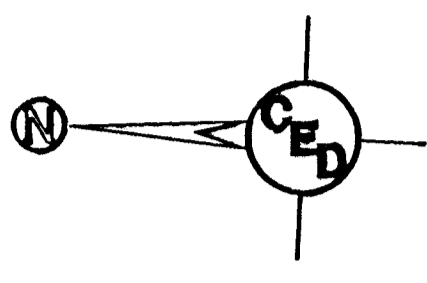
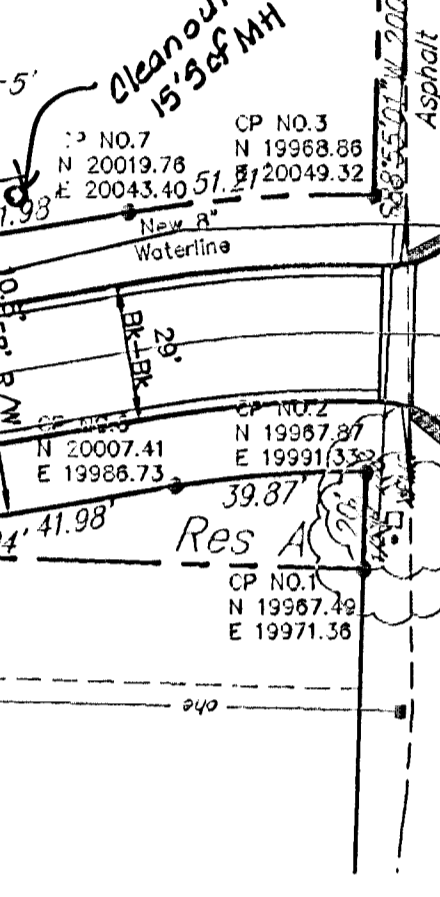


Sta. 0+90.00,
perform 65 L.F.
flushing, and
final density of at
least 90% Standard Proctor Density.



SS Line No. 1, Sta. 1+28.88
Install Type 'P' Manhole
Install & Cap 2, 5 L.F. of 4"
pipes (NE & SE)
Exist. Grnd. Elev.=186.90
Top Elev.=187.30-188.0
FL Out 8"(N)= 176.09
FL In 4" Stub(SE)= 176.19
FL In 4" Stub(NE)= 176.19
20062.91
20045.08



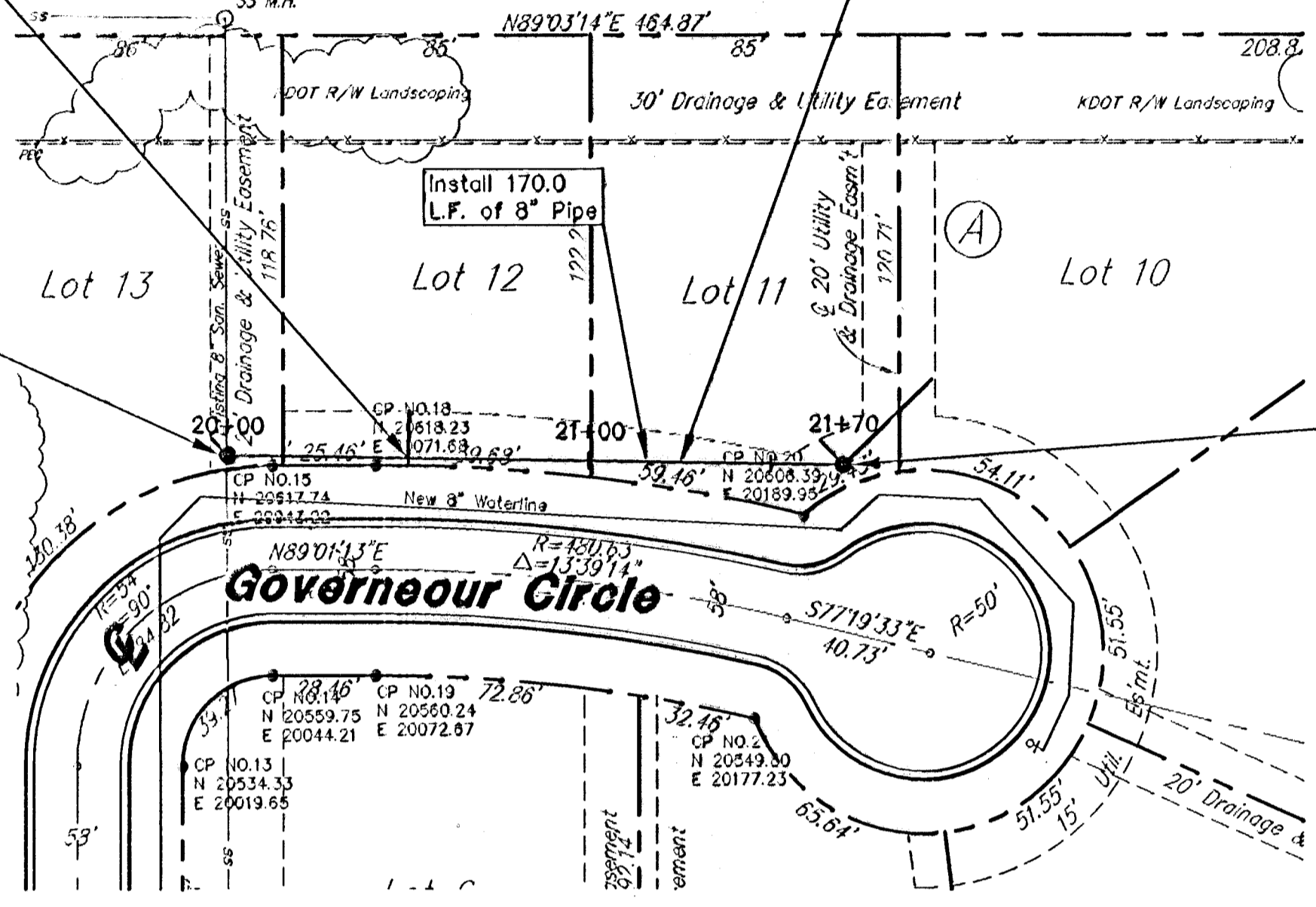
32nd Street North

Sta. 20+50.00
Install 13 L.F. of 4" Tee
Service Connection & Riser
Pipe Assembly(N)
Exist. Ground=190.49
FL=184.31

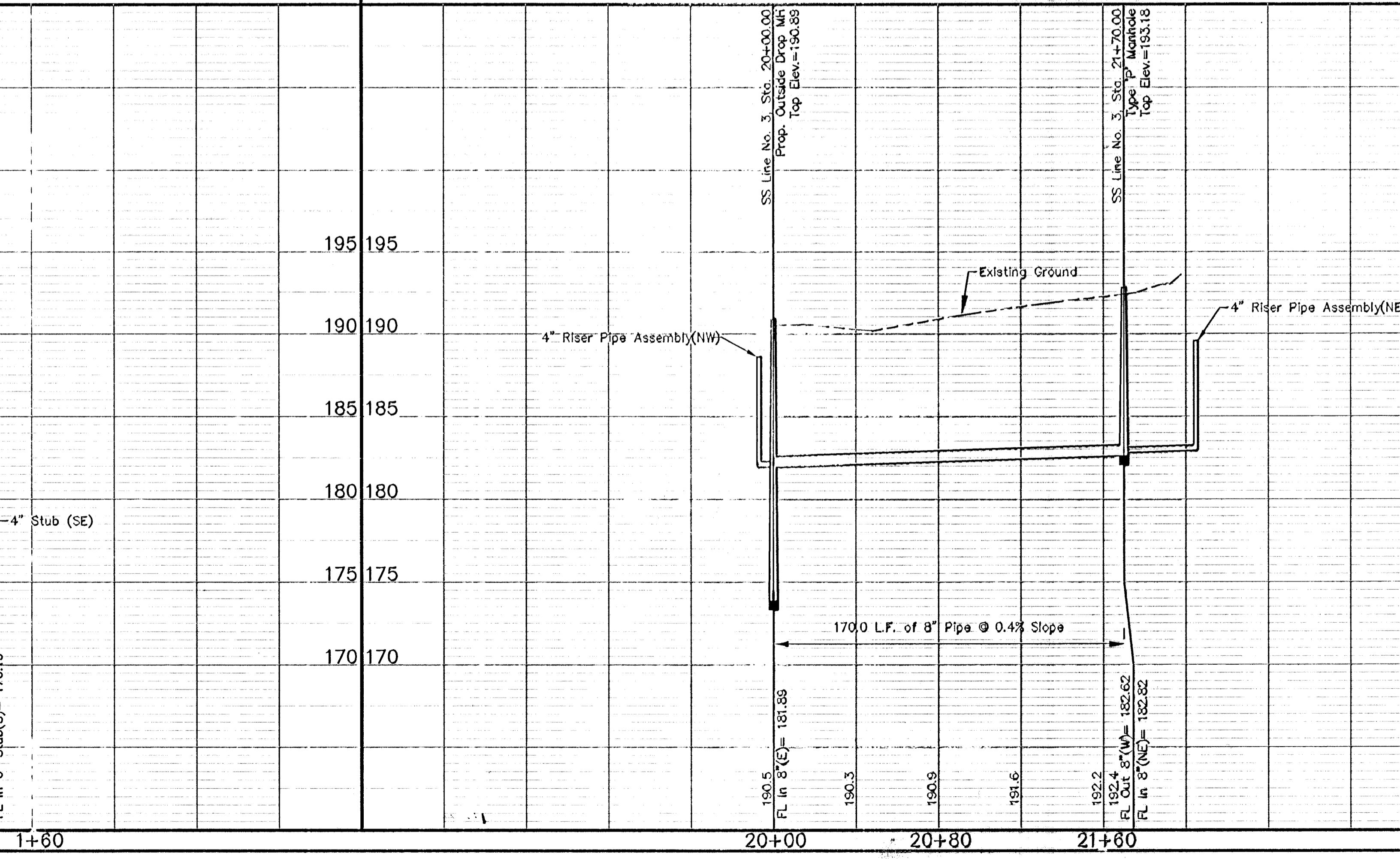
SS Line No. 3, Sta. 20+00.00
Install Type 'P' Outside Drop Manhole
Over Exist. SS Line
Install 4 L.F. of 4" Riser Pipe
Assembly(NW)
Exist. Grnd. Elev.=190.49
Top Elev.=190.89
FL Out 8"(S)= 173.67
FL In 8"(N)= 173.87
FL In 8"(E)= 181.89
FL In 4"(NW)= 181.89
N 20620.33
E 20030.75

**Northeast Expressway
K-96 Highway**

Sta. 20+00.00 to sta. 21+70.00,
Contractor shall perform 170 L.F.
of sand backfilling, flushing, and
compacting to a final density of at
least 90% Standard Proctor Density.



SAN. SEWER LINE NO. 3



1+60 20+00 20+80 21+60