

PAVING PLANS FOR PHASE 3B

REED'S COVE ADDITION

AN ADDITION TO THE CITY OF WICHITA
 SEDGWICK COUNTY, KANSAS

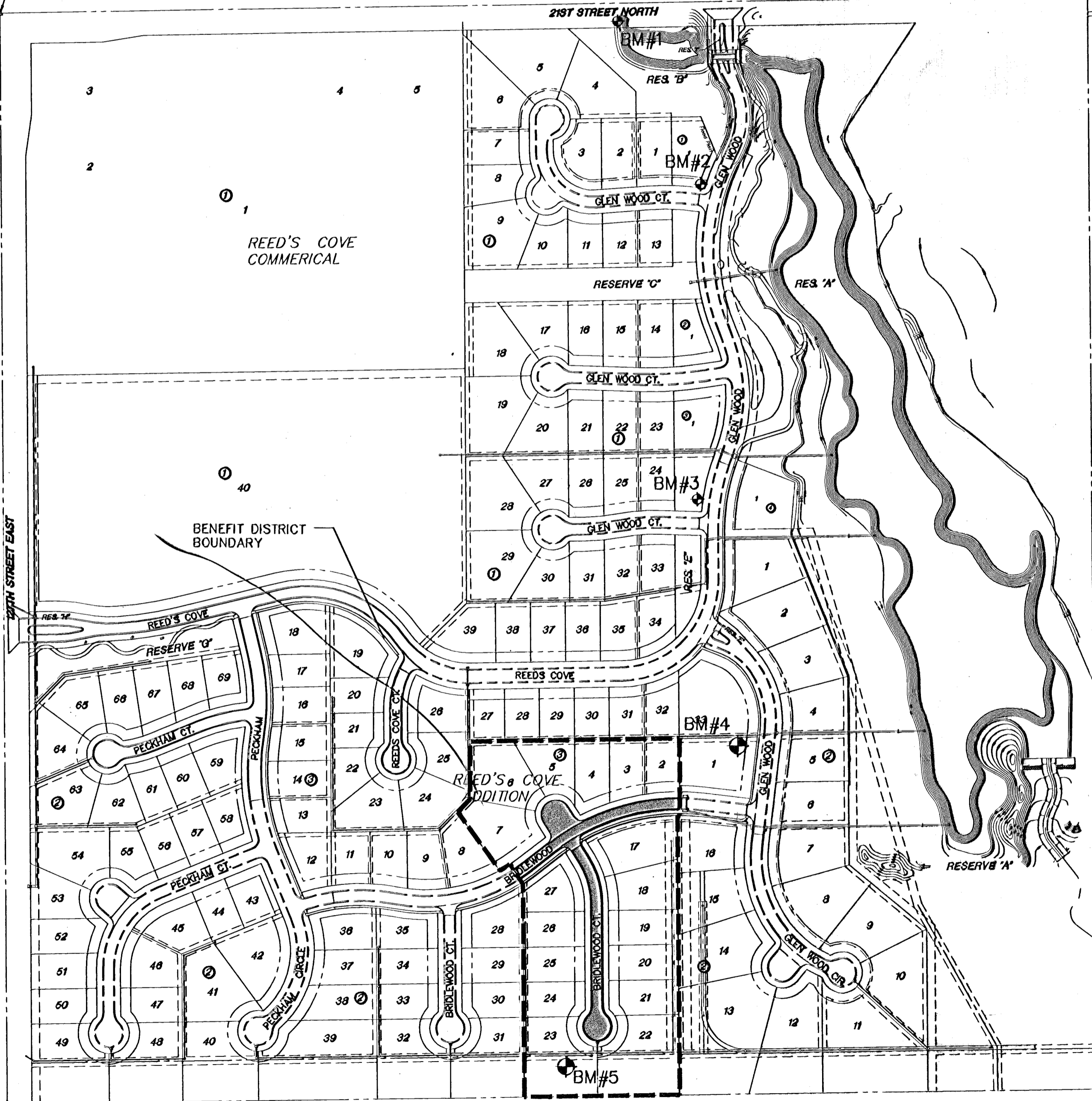
PROJECT NO. 472-84238

JAMES L. ARMOUR, CITY ENGINEER

OCA - 765952

NW. Cor., NW 1/4, Sec. 11,
 T27S, R2E, 6th P.M.
 Fnd. 3/4" Pipe in Thimble
 N1699866.9619
 E1691512.6299

NE. Cor., NW 1/4, Sec. 11
 T27S, R2E, 6th P.M.
 Fnd. 3/4" Pipe
 N1699933.6799
 E1694161.6279



SCALE: 1" = 20'



NW. 1/4,
 T27S, R2E,
 Fnd. 3/4"
 Thimble
 211.0539
 552.4949

SE. Cor., NW 1/4, Sec. 11,
 T27S, R2E, 6th P.M.
 Fnd. Stone
 N1697273.5409
 E1694206.3599