

# FINAL PLAT

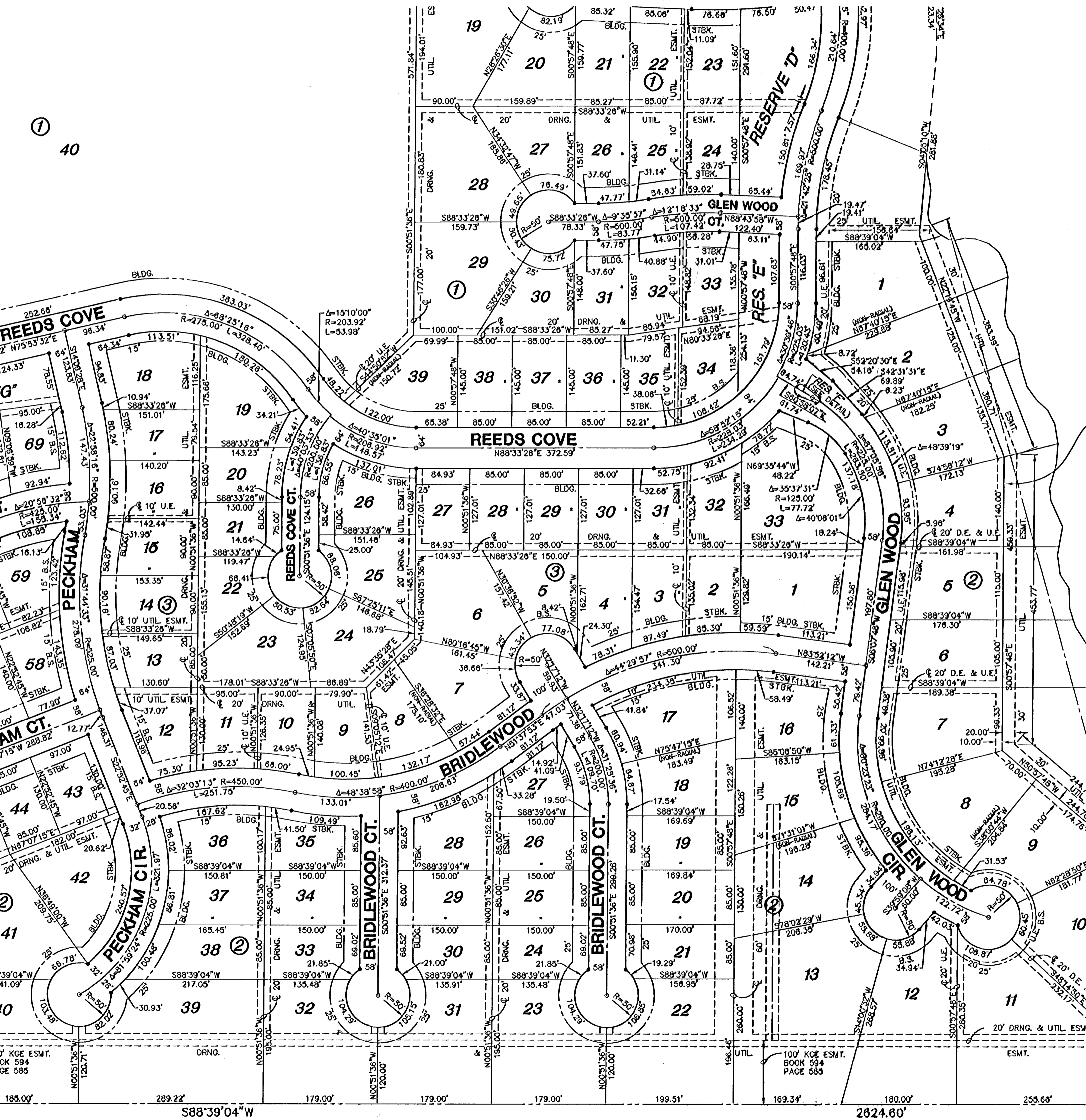
# REED'S COVE ADDITION

## AN ADDITION TO WICHITA, SEDGWICK COUNTY, KANSAS

21st ST. NORTH

BASIS OF BEARINGS: KANSAS SOUTH ZONE GRID BEARING OF N88°33'26"E(M)

2649.84(M) N. LINE NW ¼



BURLINGTON NORTHERN RAILROAD