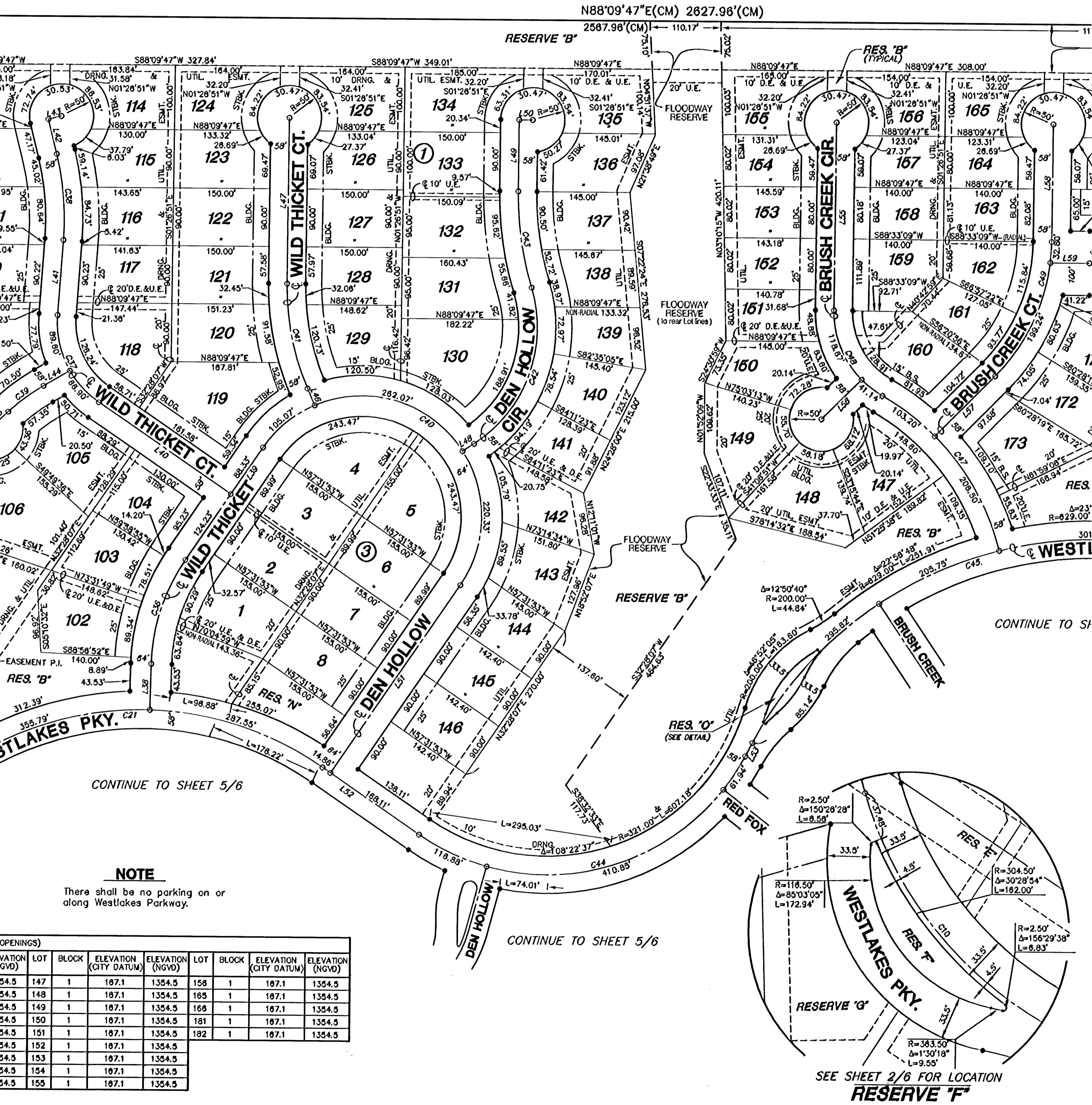


# FINAL PLAT

# FOX RIDGE ADDITION

## AN ADDITION TO WICHITA, SEDGWICK COUNTY, KANSAS

W, 6th P.M.  
 n id cap 0.07  
 ed location



CONTINUE TO SHEET 5/6

CONTINUE TO SHEET 5/6

SEE SHEET 2/6 FOR LOCATION  
**RESERVE 'F'**

**NOTE**  
 There shall be no parking on or  
 along Westlakes Parkway.

LOT	BLOCK	ELEVATION (CITY DATUM)	ELEVATION (NGVD)	LOT	BLOCK	ELEVATION (CITY DATUM)	ELEVATION (NGVD)
147	1	187.1	1354.5	158	1	187.1	1354.5
148	1	187.1	1354.5	165	1	187.1	1354.5
149	1	187.1	1354.5	166	1	187.1	1354.5
150	1	187.1	1354.5	181	1	187.1	1354.5
151	1	187.1	1354.5	182	1	187.1	1354.5
152	1	187.1	1354.5				
153	1	187.1	1354.5				
154	1	187.1	1354.5				
155	1	187.1	1354.5				