

PHASE 13 - PART 2  
PAVING STREETS AND INCIDENTAL DRAINAGE IN  
**FOX RIDGE ADDITION**

AN ADDITION TO THE CITY OF WICHITA  
SEDGWICK COUNTY, KANSAS

PROJECT NO. 472-84214

JIM ARMOUR, P.E. - CITY ENGINEER

OCA 765962

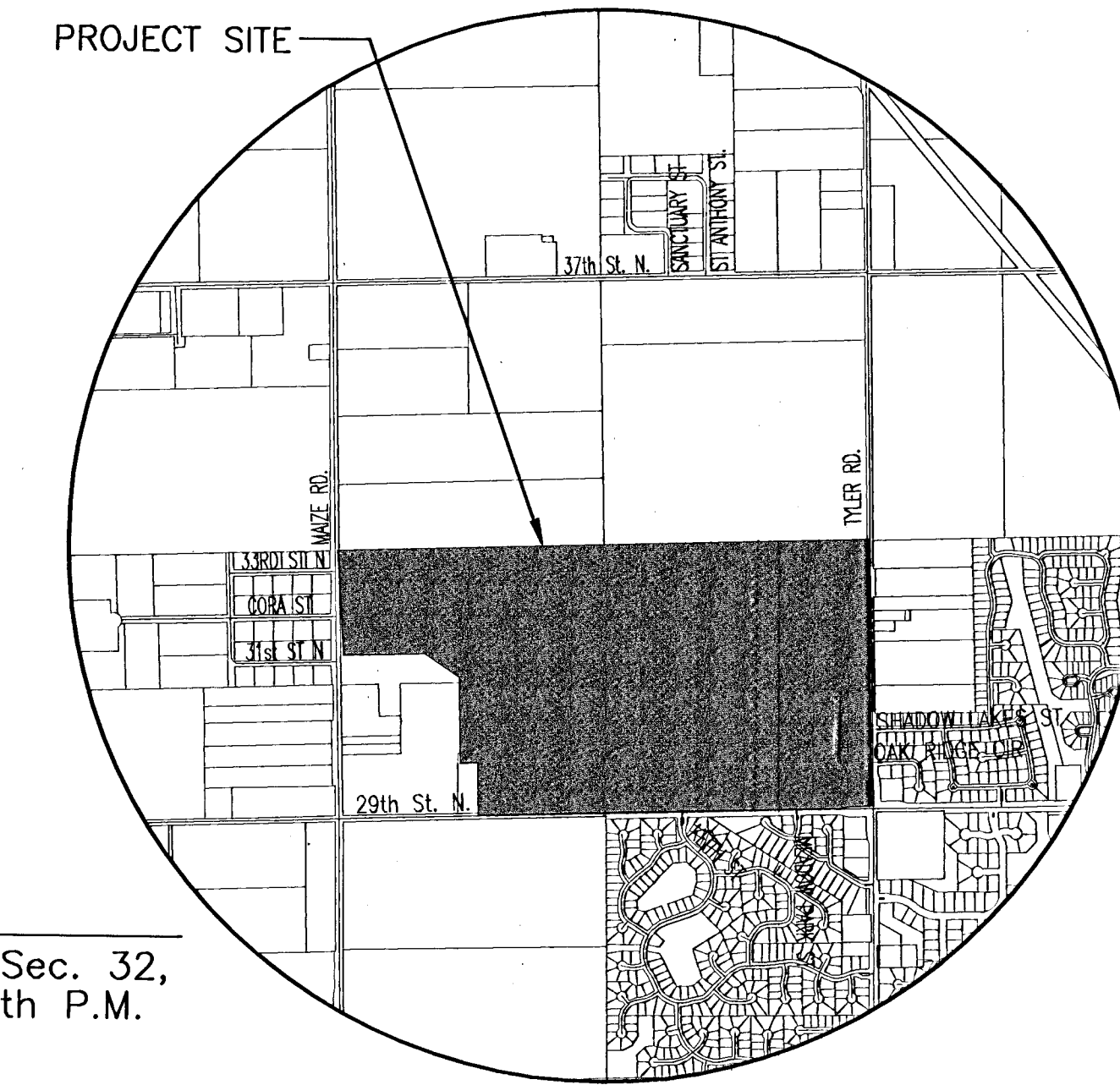
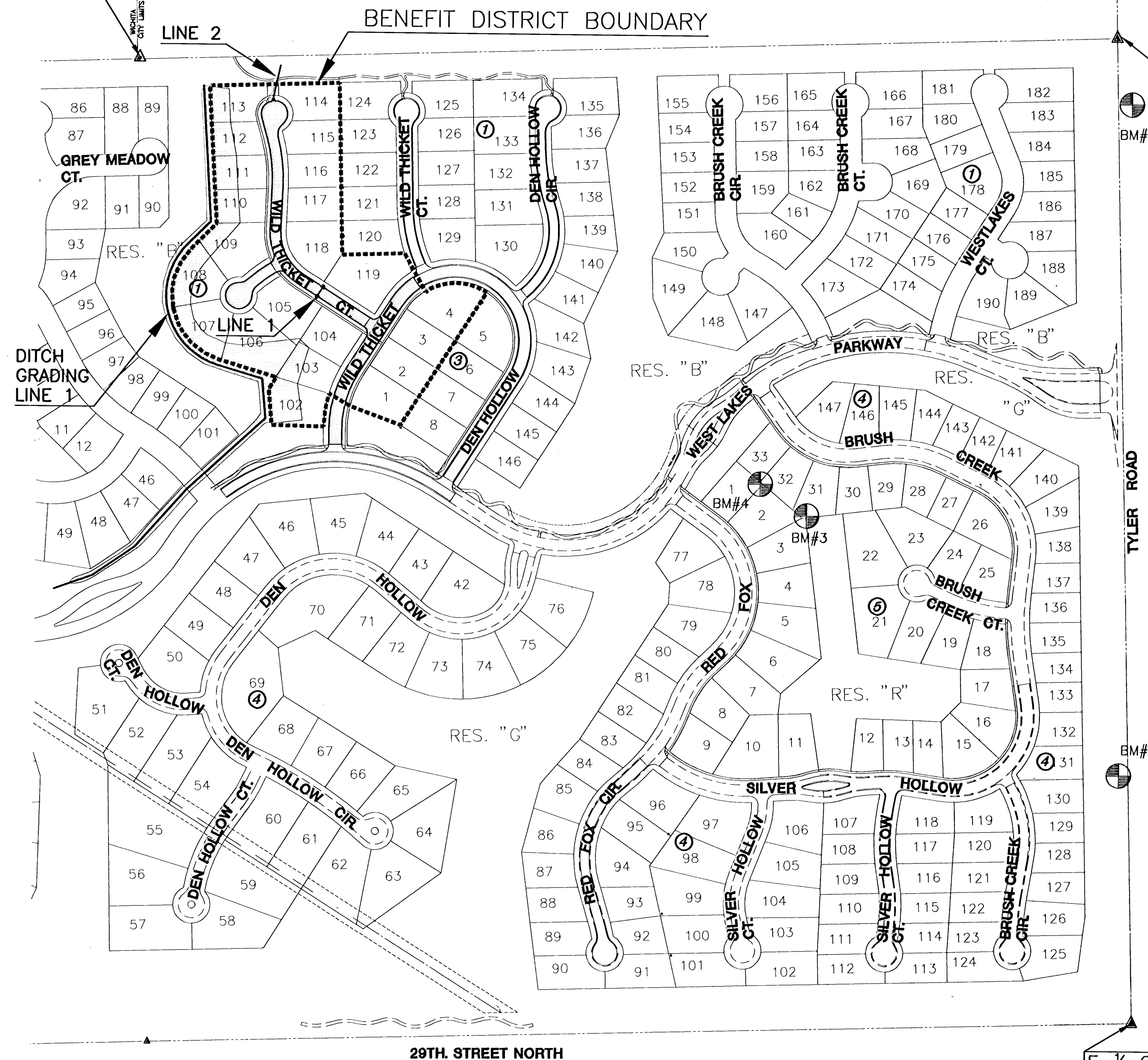
SERVING LOTS 102 THROUGH 119, BLOCK 1;  
LOTS 1 THROUGH 4, BLOCK 3

Center, Sec. 32,  
T26S, R1W, 6th P.M.  
Fnd. 1/2" Bar w/  
Baughman id cap

**GENERAL NOTES**

- UNLESS SHOWN OR STATED OTHERWISE ON THESE DRAWINGS, MATERIALS AND CONSTRUCTION SHALL BE IN ACCORDANCE WITH CITY OF WICHITA CONCRETE PAVEMENT AND ASPHALTIC CONCRETE PAVEMENT SPECIFICATIONS.
- CONTRACTOR WILL BE REQUIRED TO PROVIDE A MINIMUM ADVANCE NOTICE OF FORTY-EIGHT (48) HOURS TO UTILITY COMPANIES PRIOR TO STARTING ANY EXCAVATION AS FOLLOWS:  
KANSAS ONE-CALL 1-800-344-7233  
OR 687-2470 (LOCAL WICHITA)  
THE CONTRACTOR MUST NOTIFY THE FOLLOWING IN CASE OF AN EMERGENCY:  
SBC (TELEPHONE) 800-870-8390  
COX COMMUNICATIONS (CABLE) 262-0661  
WESTAR (ELECTRIC) 383-8600  
KANSAS GAS SERVICE (GAS) 832-3101  
CITY OF WICHITA WATER & SEWER MAINT. 262-6000  
AQUILA (GAS) 946-0096
- THE CONTRACTOR SHALL BE RESPONSIBLE FOR PRESERVING PROPERTY IRONS. THE CONTRACTOR WILL BE REQUIRED TO RE-ESTABLISH ANY PROPERTY IRONS WHICH ARE DAMAGED OR DESTROYED BY HIS CONSTRUCTION OPERATIONS. SUCH IRONS SHALL BE RE-ESTABLISHED BY A LICENSED LAND SURVEYOR IN ACCORDANCE WITH STATE LAWS.
- EXISTING UTILITIES AND THEIR LOCATIONS, AS SHOWN ON THE PLANS REPRESENT THE BEST INFORMATION OBTAINABLE FOR DESIGN. LOCATION INFORMATION HAS BEEN OBTAINED FROM THE VARIOUS UTILITY COMPANIES AND IS EITHER FROM COMPANY RECORD DRAWINGS OR COMPANY PROVIDED FIELD LOCATIONS. THE PLAN LOCATIONS SHOWN ARE NOT GUARANTEED. ADDITIONAL EXISTING UTILITIES MAY ALSO BE ENCOUNTERED.
- RUBBLE FROM THE REMOVAL OF MISCELLANEOUS STRUCTURES AND EXCESS EXCAVATION WHICH IS TO BE WASTED SHALL BE DISPOSED OF ON SITES TO BE PROVIDED BY THE CONTRACTOR. THESE SITES SHALL BE APPROVED BY THE ENGINEER AS TO SUITABILITY, APPEARANCE AND SITE LOCATION. LOCATIONS THAT, IN THE OPINION OF THE ENGINEER, WILL LEAVE AN UNSIGHTLY APPEARANCE WILL NOT BE APPROVED. ALL DISPOSAL SITES MUST BE APPROVED BY THE KANSAS DEPARTMENT OF HEALTH AND ENVIRONMENT. MATERIAL EITHER STOCKPILED OR DISPOSED OF IN A FLOOD PLAIN WOULD REQUIRE A KANSAS STATE BOARD OF AGRICULTURE PERMIT. ANY MATERIAL DUMPED IN WATERS OF THE UNITED STATES OR WETLANDS IS SUBJECT TO U.S. CORPS OF ENGINEERS PERMITTING REGULATIONS. ANY MATERIAL BURIED OR STOCKPILED BEYOND APPROVED CONSTRUCTION LIMITS WOULD REQUIRE ADDITIONAL ARCHAEOLOGICAL INVESTIGATIONS UNLESS BURIED IN A PREVIOUSLY APPROVED BORROW LOCATION.
- A SAW CUT OF AT LEAST ONE-HALF THE DEPTH OF THE EXISTING SURFACE COURSES OR ONE-FOURTH THE DEPTH OF THE EXISTING TOTAL PAVEMENT THICKNESS SHALL BE PROVIDED AT LOCATIONS WHERE PROPOSED CONSTRUCTION ABUTS AN EXISTING SURFACE OR PAVEMENT FOR WHICH PARTIAL REMOVAL OF THAT SURFACE OR PAVEMENT IS REQUIRED. SAW JOINT TO FACILITATE REMOVAL WITHIN THREE (3) FEET OF EXISTING JOINTS WILL NOT BE PERMITTED AND FOR SUCH INSTANCES THE LIMITS OF REMOVAL SHALL EXTEND TO THE EXISTING JOINT. SUCH SAW CUTS WILL NOT BE PAID FOR DIRECTLY AND THIS COST SHALL BE CONSIDERED AS SUBSIDIARY TO THE REMOVAL OF SURFACE OR PAVEMENT.
- THIS PROJECT INCLUDES A CERTAIN AMOUNT OF ROLL TYPE CURB CONSTRUCTION. ROLL CURBS SHALL BE DEPRESSED THROUGH ALL DRIVEWAY OPENINGS WHEN SUCH DRIVES ARE CONSTRUCTED AS A PART OF THE PROJECT. NO MORE THAN 10 DRIVES 20 FEET IN WIDTH OR EQUIVALENT COMBINATIONS THEREOF ARE TO BE CONSTRUCTED WITH THIS PROJECT.
- CONTRACTOR SHALL SEED AND MULCH ALL DISTURBED AREAS WITH RYE GRASS AT A RATE OF 200 LBS. PER ACRE. GROUND SHALL BE PREPARED IN ACCORDANCE WITH CITY OF WICHITA SPECIFICATIONS.
- SOIL SUBGRADE CONDITIONS WARRANT INSPECTOR APPROVAL BEFORE TENSAR MAT SHALL BE PLACED. CONTRACTOR SHALL PROOF ROLL THE SUBGRADE TO OBTAIN DESIRED COMPACTION. ANY AREAS THAT "PUMP" OR COMPACTION IS NOT OBTAINED SHALL BE EXCAVATED OUT TO A DEPTH DETERMINED BY THE ENGINEER AND REPLACED WITH CRUSH CONCRETE. COST ASSOCIATED WITH PREPARATION OF SUBGRADE SOIL SHALL BE SUBSIDIARY TO EARTHWORK.

<b>PROJECT LENGTH</b>	
WILD THICKET/DEN HOLLOW	533 L.F.
WILD THICKET COURTS	910 L.F.
<b>EARTHWORK SUMMARY</b>	
EXCAVATION	5000 C.Y.
COMPACTED FILL	250 C.Y.



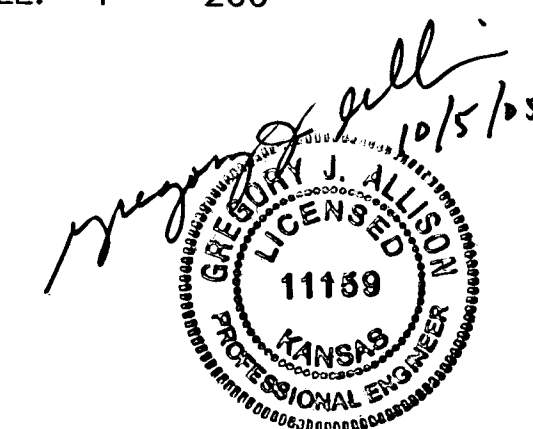
**VICINITY MAP**

E. 1/4 Corner, Sec. 32,  
T26S, R1W, 6th P.M.  
Fnd. 3/4" Pipe

**INDEX TO DRAWINGS**

SHEET NO.	DESCRIPTION
1	TITLE SHEET
2-5	PAVING DETAILS
6	SIGNING DETAILS
7-9	PAVING PLANS
10-13	DITCH GRADING
14	INLET DETAILS
15	STORM SEWER PLANS
16-20	BMP DETAILS
21-27	CROSS SECTIONS
28	BUBBLE MAP
29	FINAL PLAT

SCALE: 1" = 200'



**BENCHMARKS**

- BM#1 Square cut top curb W. end of island at Shadow Lakes, East side of Tyler Rd. Elev. = 175.81
- BM#2 RR spike in W. face of South H-pole East of Tyler Rd., 3320 N. Tyler Rd. Elev. = 175.53
- BM#3 5/8" Rebar set just West of NE Corner Lot 3, Block 5 Elev.=167.01
- BM#4 5/8" Rebar set just West of SE Corner Lot 33, Block 5 Elev.=165.54

E. 1/4 Corner, Sec. 32,  
T26S, R1W, 6th P.M.  
Fnd. 3/4" Pipe

**MKEC ENGINEERING CONSULTANTS**  
411 N. WEBB ROAD  
WICHITA, KS. 67204  
316-884-9600

**FOX RIDGE ADDITION - PHASE 13 - PART 2**  
PROJECT NAME

**PAVING PLANS**  
SHEET TITLE

DESIGN BY: DFL  
DRAWN BY: MKrk  
CHECKED BY: GJA

DATE: OCTOBER 2005  
JOB NO.: 99118  
SHEET/OF: 1 / 29