

BENCHMARK:
 BM #1: C.O.W. disc in curb adjacent to fire hydrant near SE corner of Lot 18, Block B, Southern Ridge 2nd Addition. Elev. = 144.10 (City Datum)

BM #2: C.O.W. disc 44.0' S & 49.8' W of intersection of Pawnee & Maize Road. 12.0' E of fence and 65.0' SW of section corner Elev. = 132.12 (City Datum)

Remove trees only as necessary for street construction and only with permission of Developer or Baughman Co. Cost of removal to be incidental to lump sum bid item "Site Clearing & Restoration".

Install end-of-road hay bale sediment barriers. See detail, sheet 14.

Sta 0+05.00, Begin construction of 5" A.C. pvmt. w/ 5" reinf. rock base and 4' sidewalk.

Sta 0+03.00, 4' Lt/Rt Install E.O.R. markers as shown. (Relocated from Sta 1+27, Fieldcrest St.) (See detail, sheet 4.)

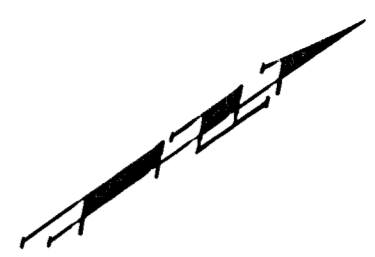
Construct 7" reinforced concrete valley gutter pavement with monolithic curb (3-5/8")

Sta 1+18.00, 35' Rt. Install std. D3 (SNS) ass'y as per City specs. "Savannah" & Metro SNS "Prescott Cir (2513-2530)".

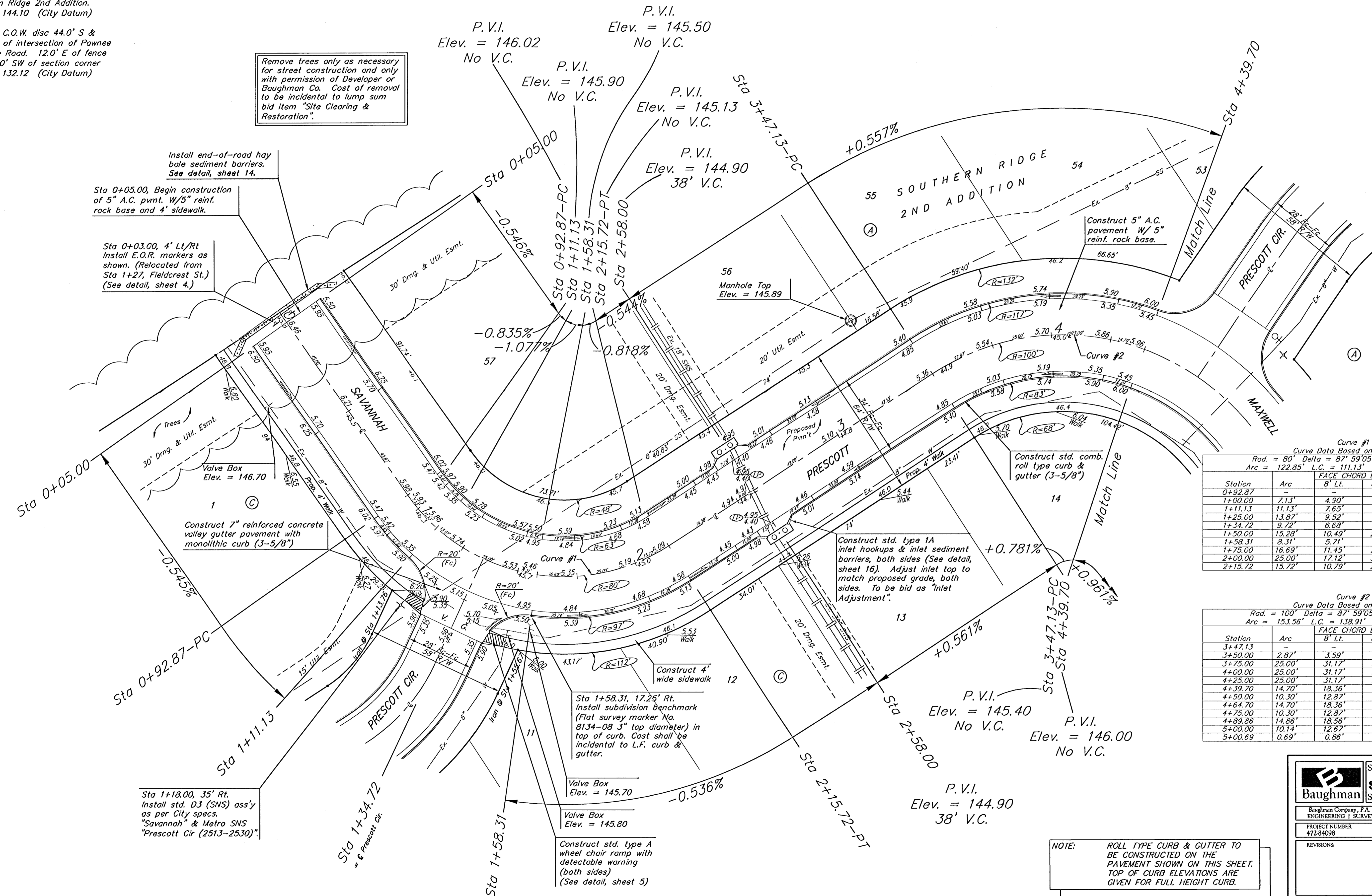
Construct std. type A wheel chair ramp with detectable warning (both sides) (See detail, sheet 5)

Construct std. type 1A inlet hookups & inlet sediment barriers, both sides (See detail, sheet 16). Adjust inlet top to match proposed grade, both sides. To be bid as "Inlet Adjustment".

NOTE: ROLL TYPE CURB & GUTTER TO BE CONSTRUCTED ON THE PAVEMENT SHOWN ON THIS SHEET. TOP OF CURB ELEVATIONS ARE GIVEN FOR FULL HEIGHT CURB.



Scale: 1" = 20'
 • = Iron



Curve #1
 Curve Data Based on Centerline
 Rad. = 80' Delta = 87° 59' 05" Tangent = 77.23'
 Arc = 122.85' L.C. = 111.13' Del/Flt. = 21.48589 Min.

Station	Arc	FACE CHORD LENGTHS		Defl.	T. Defl.
		8' Lt.	8' Rt.		
0+92.87	-	-	-	0'00"00"	0'00"00"
1+00.00	7.13'	4.90'	9.36'	2'33"11"	2'33"11"
1+11.13	11.13'	7.65'	14.60'	3'59"08"	6'32"20"
1+25.00	13.87'	9.52'	18.18'	4'58"00"	11'30"20"
1+34.72	9.72'	6.68'	12.75'	3'28"50"	14'59"11"
1+50.00	15.28'	10.49'	20.02'	5'28"18"	20'27"29"
1+58.31	8.31'	5.71'	10.90'	2'58"33"	23'26"02"
1+75.00	16.89'	11.45'	21.87'	5'58"56"	29'24"58"
2+00.00	25.00'	17.12'	32.69'	8'57"09"	38'21"47"
2+15.72	15.72'	10.79'	20.60'	5'37"45"	43'59"32"

Curve #2
 Curve Data Based on Centerline
 Rad. = 100' Delta = 87° 59' 05" Tangent = 96.54'
 Arc = 153.56' L.C. = 138.91' Del/Flt. = 17.18899 Min.

Station	Arc	FACE CHORD LENGTHS		Defl.	T. Defl.
		8' Lt.	8' Rt.		
3+47.13	-	-	-	0'00"00"	0'00"00"
3+50.00	2.87'	3.59'	2.15'	0'49"20"	0'49"20"
3+75.00	25.00'	31.17'	18.70'	7'09"43"	7'59"03"
4+00.00	25.00'	31.17'	18.70'	7'09"43"	15'08"47"
4+25.00	25.00'	31.17'	18.70'	7'09"43"	22'18"30"
4+39.70	14.70'	18.36'	11.02'	4'12"41"	26'31"11"
4+50.00	10.30'	12.87'	7.72'	2'57"03"	29'28"14"
4+64.70	14.70'	18.36'	11.02'	4'12"41"	33'40"54"
4+75.00	10.30'	12.87'	7.72'	2'57"03"	36'37"57"
4+89.86	14.86'	18.56'	11.13'	4'15"25"	40'53"23"
5+00.00	10.14'	12.87'	7.60'	2'54"18"	43'47"41"
5+00.89	0.89'	0.86'	0.52'	0'11"51"	43'59"32"

Baughman SOUTHERN RIDGE 2ND ADD. - PH II
SAVANNAH/PRESOTT
 STA 0+00 TO STA 4+39.70

Baughman Company, P.A. 315 Ellis St. Waco, TX 76711 P 316.262.7111 F 316.262.0149
 ENGINEERING | SURVEYING | PLANNING | LANDSCAPE ARCHITECTURE

PROJECT NUMBER 472-84098	DESIGN ABC	DRAWN TMS
REVISIONS	APPROVED	DATE 10/05
	SCALE Noted	SHEET 6 OF 29

SouthernRidge2ndPhaseIISta1 0509.E350