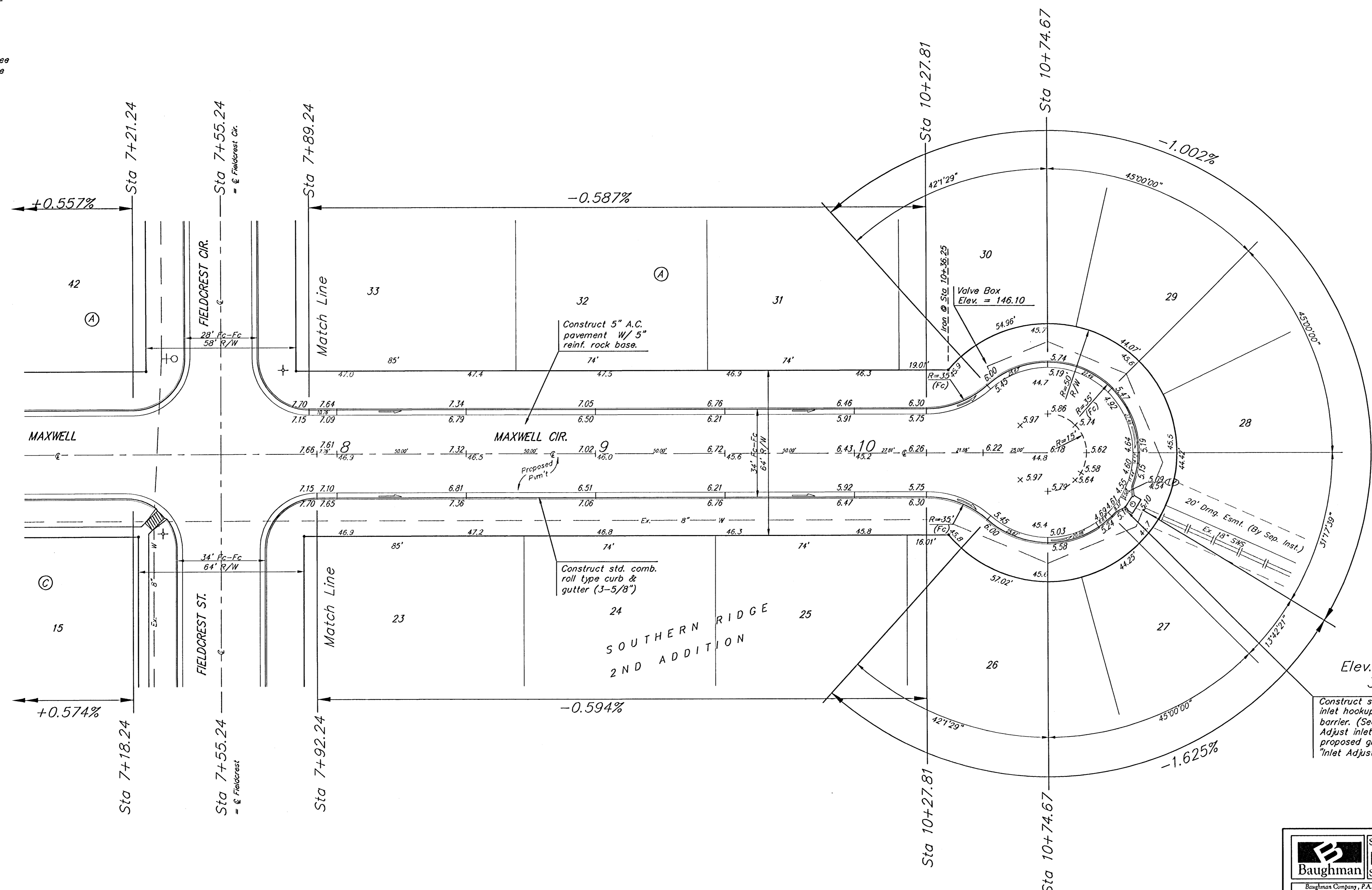
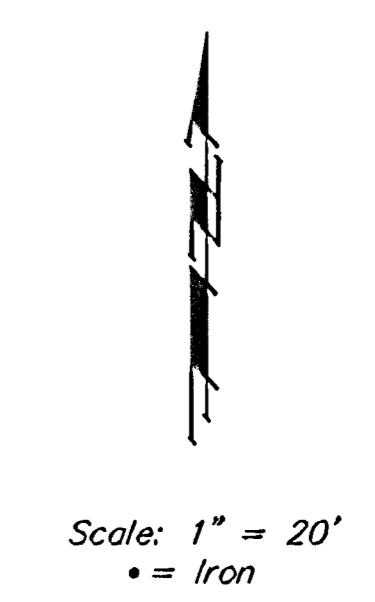


**BENCHMARK:**  
 BM #1: C.O.W. disc in curb adjacent to fire hydrant near SE corner of Lot 18, Block B, Southern Ridge 2nd Addition. Elev. = 144.10 (City Datum)

BM #2: C.O.W. disc 44.0' S & 49.8' W of intersection of Pawnee & Maize Road. 12.0' E of fence and 65.0' SW of section corner Elev. = 132.12 (City Datum)



P.V.I.  
 Elev. = 145.00  
 30' V.C.  
 Construct std. type 1A inlet hookups & inlet sediment barrier. (See detail, sheet 16). Adjust inlet top to match proposed grade. To be bid as "Inlet Adjustment".

**NOTE:** ROLL TYPE CURB & GUTTER TO BE CONSTRUCTED ON THE PAVEMENT SHOWN ON THIS SHEET. TOP OF CURB ELEVATIONS ARE GIVEN FOR FULL HEIGHT CURB.

	SOUTHERN RIDGE 2ND ADD. - PH II	
	<b>MAXWELL CIR.</b>	
STA 7+92.24 TO STA 10+74.67 <small>Baughman Company, P.A. 315 Elm St. W. Union, KS 67111 P:316-363-3111 F:316-363-0149</small> <small>ENGINEERING   SURVEYING   PLANNING   LANDSCAPE ARCHITECTURE</small>		
PROJECT NUMBER 472-84098	DESIGN AEG	DRAWN TMS
REVISIONS:	APPROVED	DATE 10/05
	SCALE Noted	SHEET
	<b>8 OF 29</b>	
SouthernRidge2nd\PhaseII\Sr3		05-09-E350