

# STORM WATER DRAIN #268

to serve

# RIVENDALE ADDITION

CITY OF WICHITA, KANSAS

James L. Armour, P.E. City Engineer

Project Number

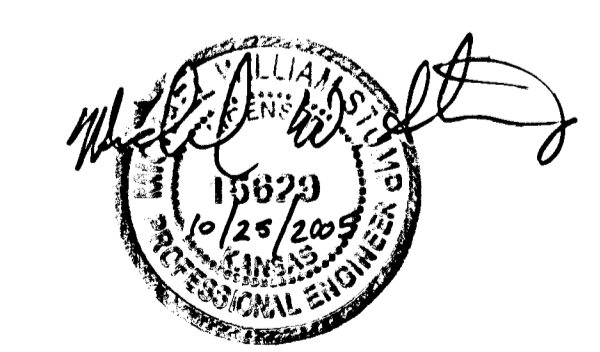
**468-84015**

O.C.A. Number

**751409**

## GENERAL NOTES:

- Contractor will be required to provide notice to utility companies a minimum of forty-eight (48) hours prior to any excavation, as follows:  
 Kansas One-Call 687-2470  
 The Contractor must notify the following in case of an emergency:  
 Cox Communications 262-4270  
 Kansas Gas Service 1-888-482-4950  
 Westar Energy 383-8650  
 Aqua Energy 1-800-303-0357  
 SBC 268-2245  
 City of Wichita Water Dept. 268-4563  
 City of Wichita Sewer Maint. 268-4024  
 City of Wichita Storm Sewer Maint. 268-4090  
 City of Wichita Traffic Maint. 268-4034  
 Conoco Pipeline Co. 1-800-231-2551  
 Southern Star Pipeline Co. 529-6800  
 Phillips Pipeline Co. 1-800-768-8230
- Utility service lines, poles, valve boxes, meters, and etcetera are to be adjusted as necessary by others prior to construction unless the plans specifically call for their adjustment by the Contractor or unless the plans specifically identify a utility to be adjusted by its owner during construction. Existing utilities and their location, as shown on the plans, represent the best information obtainable for design. The Contractor will be required to work around existing utilities within the right-of-way which do not conflict with proposed construction.
- Rubble from the removal of miscellaneous structures and excess excavation which is to be wasted shall be disposed of on sites to be provided by the Contractor. These sites shall be approved by the Engineer as to suitability, appearance and site location. Locations, in the opinion of the Engineer, that will leave an unsightly appearance will not be approved. All disposal sites must be approved by the Kansas Department of Health and Environment. Material either stockpiled or disposed of in a flood plain would require a Kansas State Board of Agriculture permit. Any material dumped in waters of the United States or wetlands is subject to U.S. Corps. of Engineers permitting regulations. Any material buried or stockpiled beyond approved construction limits would require additional archaeological investigations unless buried in a previously approved borrow location.
- Trees and shrubs in public right-of-way which are in direct conflict with proposed new construction shall be removed by the Contractor with the Engineer's approval. Trees and shrubs which are not in direct conflict with proposed new construction shall be saved and protected from damage.
- The Contractor shall give all property owners and/or tenants of developed property abutting the construction of this project a minimum of ten (10) days notice prior to start of construction.
- The Contractor shall be responsible for preserving property irons. The Contractor will be required to re-establish any property irons which are damaged or destroyed by his construction operations. Such irons shall be re-established by a licensed land surveyor in accordance with state laws.
- All existing and proposed erosion control measures including silt fencing, erosion control mat, straw bales, inlet barriers, and const. entrance shall be maintained throughout construction by the contractor and until project is accepted by the City of Wichita. The on-site engineer shall complete weekly reports on the status of erosion control measures. The contractor shall be required to comply with maintenance and/or replacement of erosion control measures as determined by the on-site engineer until project is accepted by City of Wichita. Maintenance and/or replacement of erosion control measures to be paid by L.S. bid item "Erosion Control BMP's."
- All areas disturbed during construction shall be seeded and mulched as follows (Temporary Seeding):  
 Seed: Rye Grass: 5 lbs./1000 Sq. Ft.  
 Mulch: Prairie Hay: 2 tons/acre  
 All costs associated with seeding and mulching shall be included in bid item "Project Seeding." All seeding operations shall conform to City of Wichita Standard Specifications.
- The developer for this project is Tim Malone, 263-4623
- Precast manholes and inlets shall be designed with the ability to be adjusted up to 8 inches (8") either direction in the field to allow for final adjustment once 'Addition Phase' is completed.
- Contact Marshall McHenry @ 655-7091 prior to work along Nursery so he may be prepared to use alternate route.



April, 2005

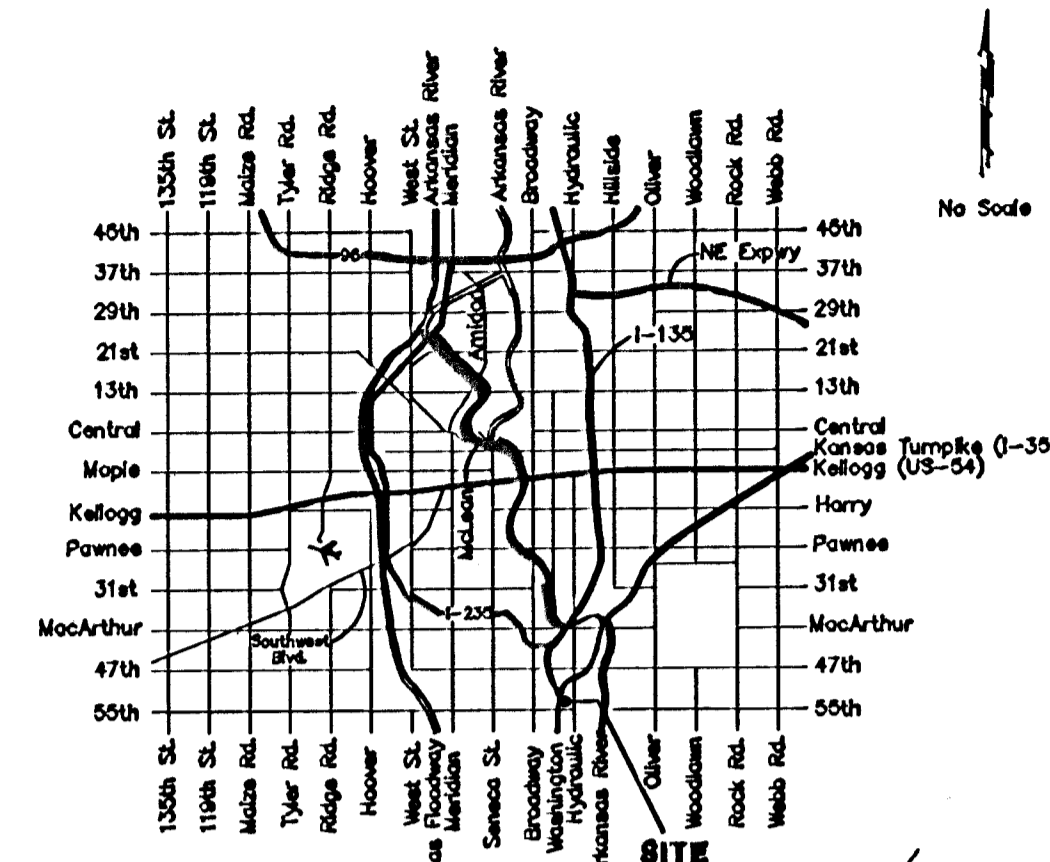
## Sheet Index

Title Sheet	1
Line 1	2-4
Line 1A	5
City RC Manhole Detail	6
Std. Type 1A Double Inlet Detail	7
Std. Manhole Detail	8
Shallow Manhole Detail	9
Ring / Lid Detail	9A
Miscellaneous Grading Plan	10
Soil Erosion Plan	11
Soil Erosion BMPs	12-15
Copy of Plat	16

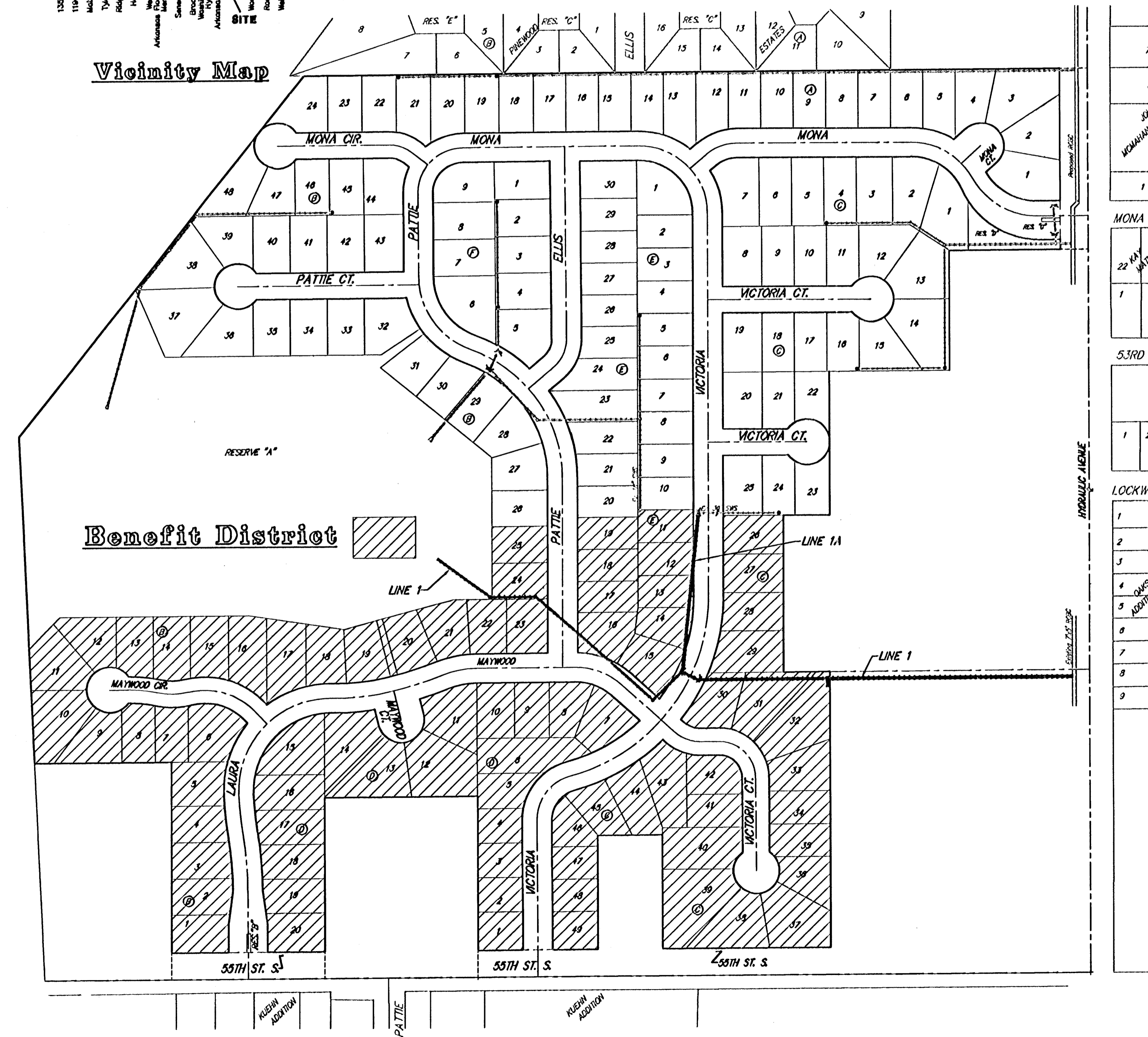
## Benchmark

City of Wichita Benchmark Disc,  
 Hydraulia and 55th Street South,  
 42.00' North of Centerline, 40.70'  
 West of Centerline, 3.70' North of  
 centerline of Power Pole, 53.20'  
 Northwest of Southeast Corner, Sec.  
 21, Twp. 23-S, R-1-E,  
 Elev. = 78.19 City Datum  
 Elev. = 1263.59 (NGVD29)

Scale: 1" = 150'



Vicinity Map



Benefit District