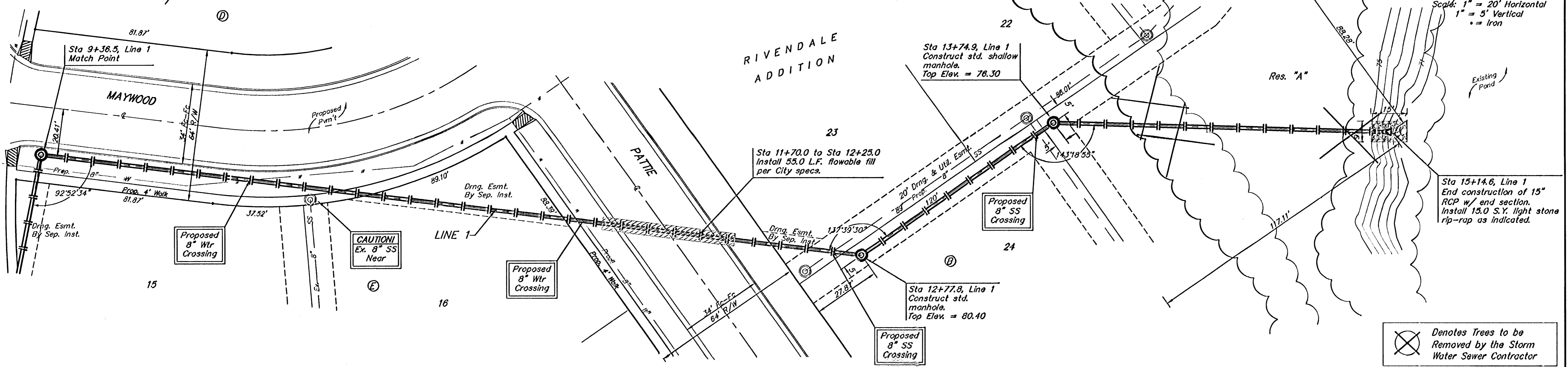


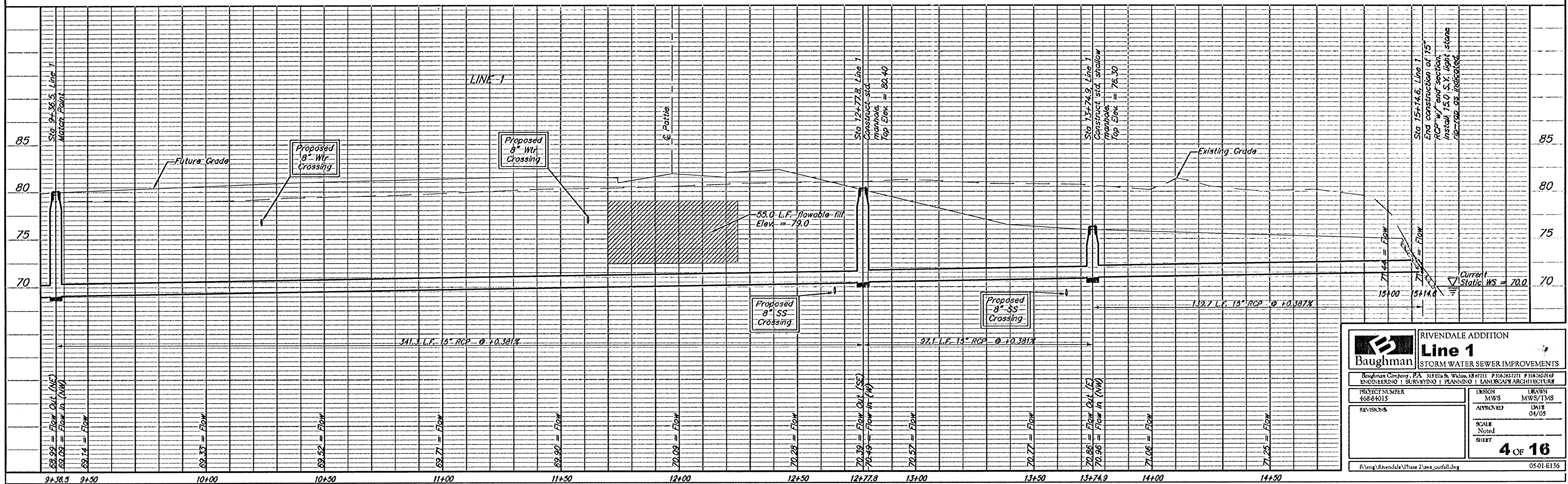
**Benchmark:**  
 City of Wichita Benchmark Disc,  
 Hydraulic and 55th Street South,  
 42.00' North of Centerline, 40.70'  
 West of Centerline, 3.70' North of  
 centerline of Power Pole, 58.20'  
 Northwest of Southeast Corner, Sec.  
 21, Twp. 28-S, R-1-E.  
 Elev. = 76.19 City Datum  
 Elev. = 1263.59 (NGVD29)

**NOTE:**  
 For manholes and inlets that have tops below  
 existing ground, seal/wrap manhole lid or inlet top  
 so no water or dirt will enter lid. Then place rigid  
 marker (board, pipe, etc.) from top of structure to  
 existing ground. At ground level attach flexible  
 marker so structure may be located in future. Then  
 backfill to existing grade.

**Note:**  
 Precast manholes and inlets shall be designed with  
 the ability to be adjusted up to 6 inches (6") either  
 direction in the field to allow for final adjustment  
 once 'Addition Phase' is completed.



⊗ Denotes Trees to be Removed by the Storm Water Sewer Contractor



<b>RIVENDALE ADDITION</b>	
<b>Line 1</b>	
STORM WATER SEWER IMPROVEMENTS	
Baughman	
Baughman Company, P.A. 315 Ellis & Wallace, KS 67211 P 316.262.7771 F 316.262.0149	
ENGINEERING   SURVEYING   PLANNING   LANDSCAPE ARCHITECTURE	
PROJECT NUMBER 468-84015	INCHON MWS APPROVED DATE 04/05
REVISIONS	MWS/TMS DATE 04/05
	SCALE Noted SHEET
	<b>4 OF 16</b>
F:\eng\Rivendale\Phase 2\sws_outfall.dwg 05-01-E136	