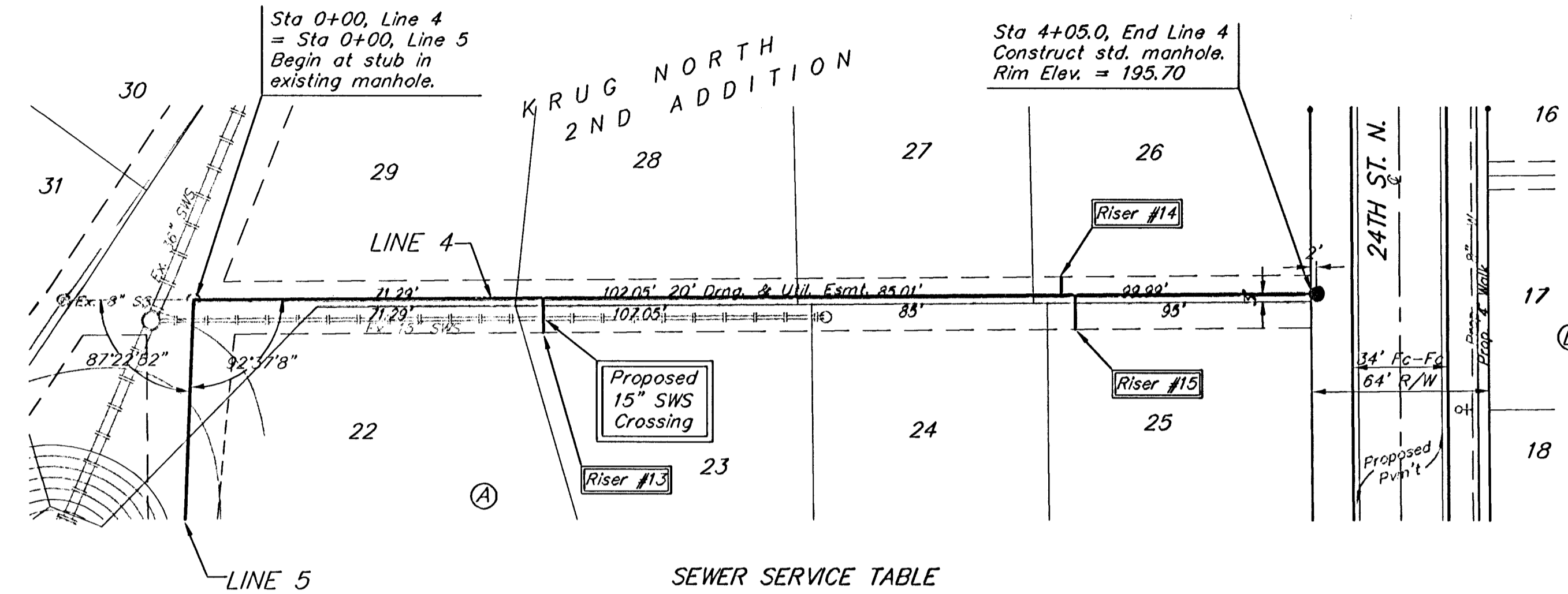


BENCHMARK:
 BM #1: "□" Cut in middle of N headwall of RCBC on 21st St. North. 1004.3' W & 22.1' N of SE Cor., SE1/4, Sec. 2, T-27-S, R-2-E.
 Elev. = 173.23 City Datum

BM #2: "□" Cut at the SE corner of the intersection of Castle Rock & Castle Rock Ct., Krug North Addition.
 Elev. = 183.50 City Datum

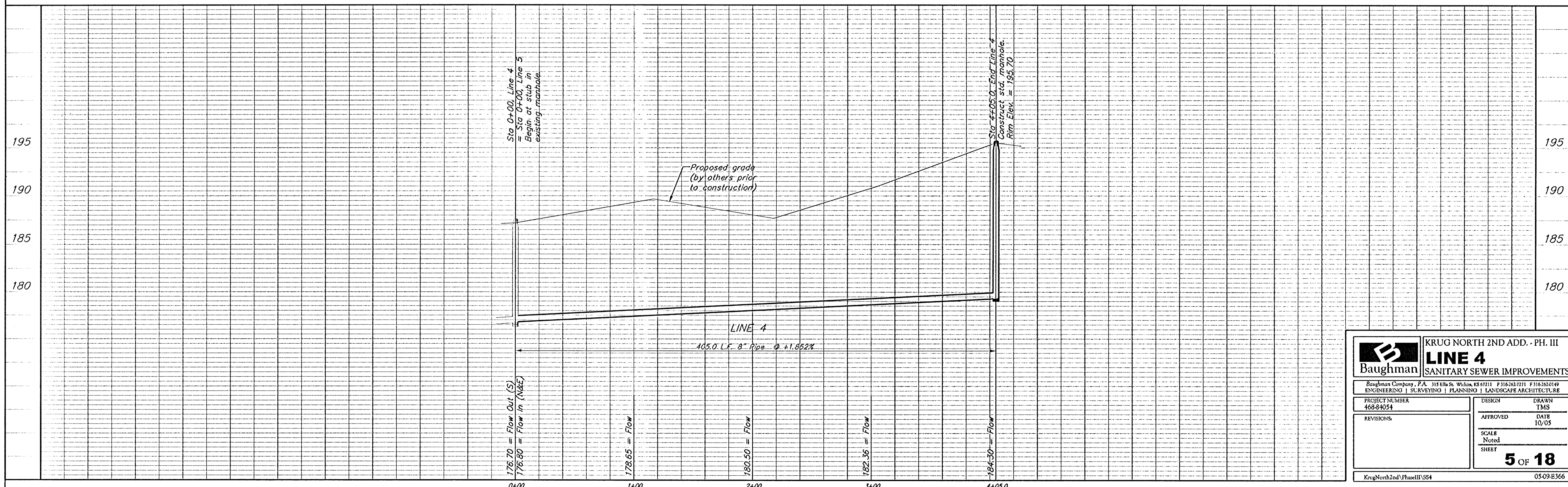
Scale: 1" = 40' Horizontal
 1" = 5' Vertical
 • = Iron



SEWER SERVICE TABLE

NUMBER	TYPE	LOCATION			STATION \ DIRECTION	FOR INFORMATION ONLY	
		LOT NO.	BLOCK NO.	LINE NO.		APPROXIMATE LENGTH 4" PIPE	
					VERTICAL	HORIZONTAL	
13	8" X 4" Tee	23	A	4	1+26/Rt.	8.0'	13'
14	8" X 4" Tee	26	A	4	3+13/Lt.	8.5'	7'
15	8" X 4" Tee	25	A	4	3+18/Rt.	8.5'	13'

NOTE: Vertical Riser Pipe shall be extended to 2' minimum above ground water elevation and 4' maximum below proposed ground elevation.



Baughman KRUG NORTH 2ND ADD. - PH. III
LINE 4
 SANITARY SEWER IMPROVEMENTS

Baughman Company, P.A. 315 Elm St., Wichita, KS 67211 P 316.262.7171 F 316.262.0149
 ENGINEERING | SURVEYING | PLANNING | LANDSCAPE ARCHITECTURE

PROJECT NUMBER 468-84054	DESIGN TMS
REVISIONS	APPROVED DATE 10/05
	SCALE Noted SHEET

5 OF 18

KrugNorth2ndVPhaseIII/SS4 0509B366