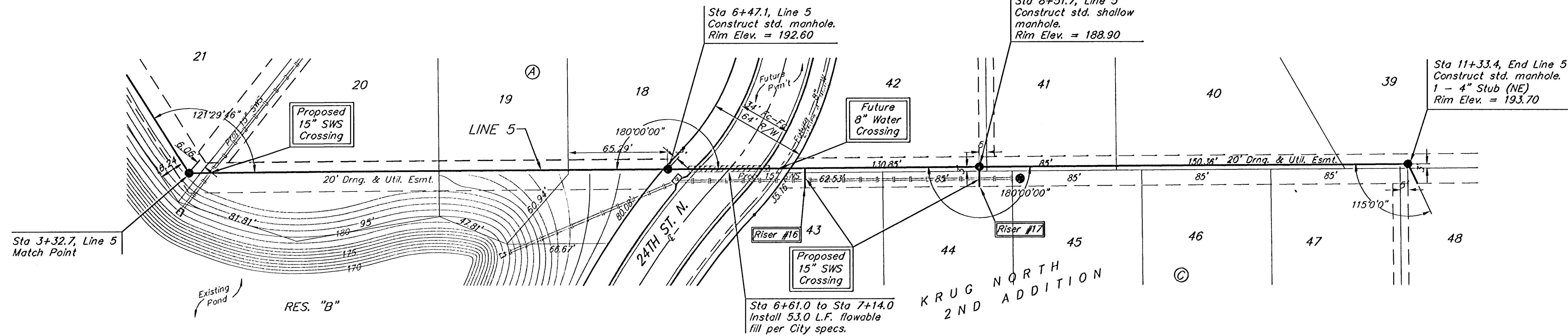


BENCHMARK:
 BM #1: "□" Cut in middle of N headwall of RCBC on 21st St. North. 1004.3' W & 22.1' N of SE Cor., SE1/4, Sec. 2, T-27-S, R-2-E. Elev. = 173.23 City Datum

BM #2: "□" Cut at the SE corner of the intersection of Castle Rock & Castle Rock Ct., Krug North Addition. Elev. = 183.50 City Datum

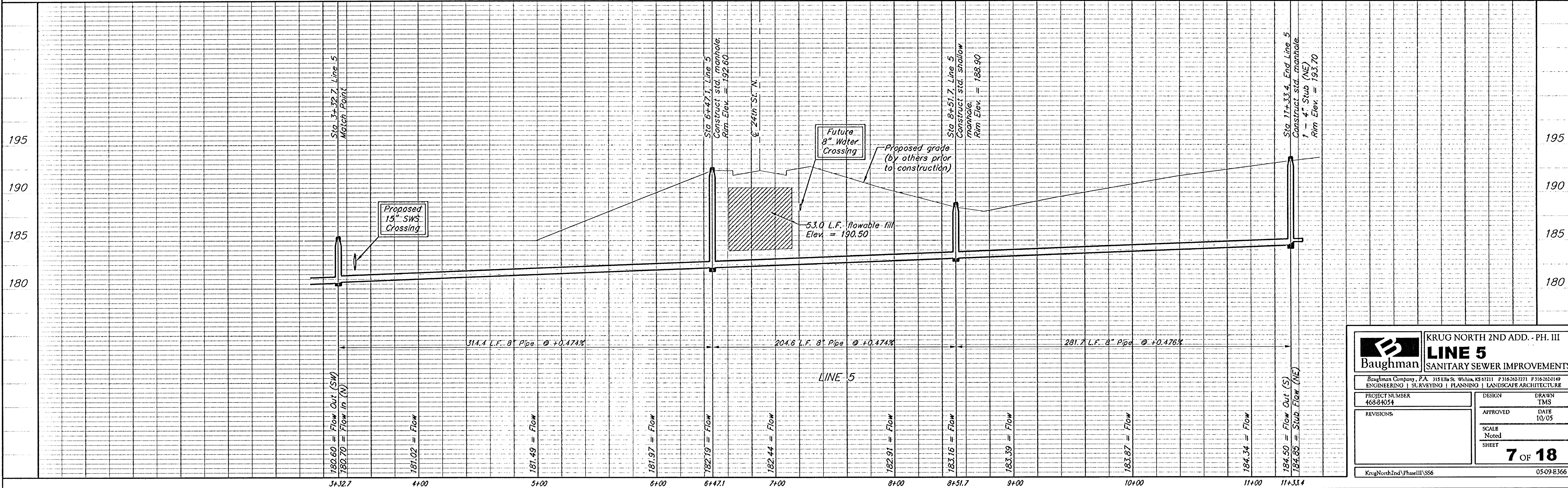
Scale: 1" = 40' Horizontal
 1" = 5' Vertical
 • = Iron



SEWER SERVICE TABLE

NUMBER	TYPE	LOCATION			STATION \ DIRECTION	FOR INFORMATION ONLY	
		LOT NO.	BLOCK NO.	LINE NO.		APPROXIMATE LENGTH 4" PIPE	VERTICAL
16	8" X 4" Tee	43	C	5	7+37/Rt.	6.0'	13'
17	4" Stub	44	C	5	8+51.7/Rt.	2.5'	13'

NOTE: Vertical Riser Pipe shall be extended to 2' minimum above ground water elevation and 4' maximum below proposed ground elevation.



	LINE 5 SANITARY SEWER IMPROVEMENTS	
	<small>Baughman Company, P.A. 315 Ellis St. Wilkes, KS 67111 P 316-262-7271 F 316-262-0149 ENGINEERING SURVEYING PLANNING LANDSCAPE ARCHITECTURE</small>	
PROJECT NUMBER 46834054	DESIGN TMS	DRAWN TMS
REVISIONS:	APPROVED DATE 10/05	SCALE Noted SHEET
		7 OF 18
<small>KrugNorth2nd\PhaseIII\SS6</small>		<small>05-09-E366</small>