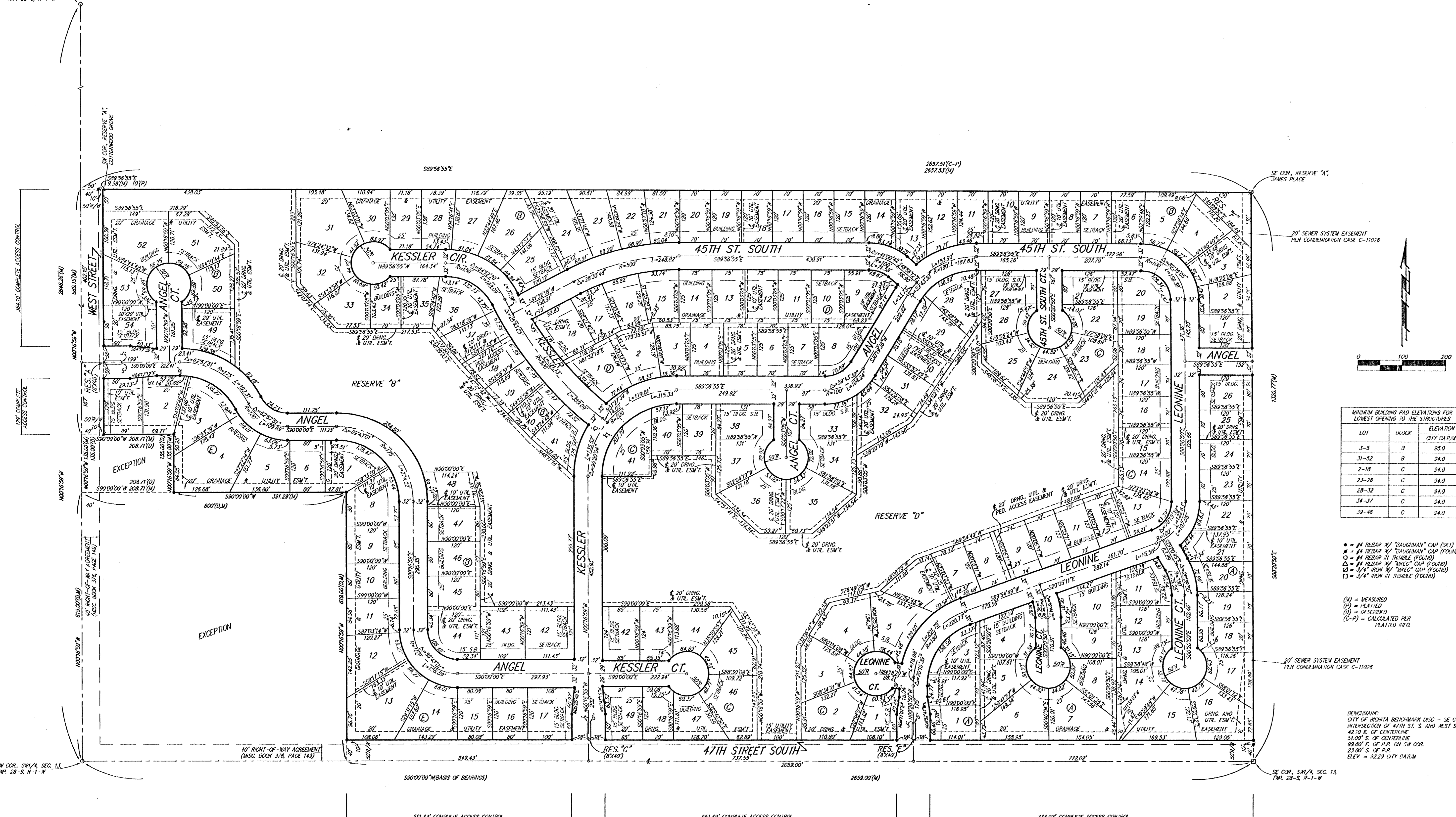


# ANGEL FIRE ADDITION

## WICHITA, SEDGWICK COUNTY, KANSAS

NW COR. SW 1/4, SEC. 13,  
TWP. 28-S, R-1-W



MINIMUM BUILDING PAD ELEVATIONS FOR  
LOWEST OPENING TO THE STRUCTURES

LOT	BLOCK	ELEVATION CITY DATUM
3-5	B	95.0
31-52	B	94.0
2-18	C	94.0
23-28	C	94.0
28-32	C	94.0
34-37	C	94.0
39-46	C	94.0

- = 1/4 REBAR W/ "DAUGHMAN" CAP (SET)
  - = 1/4 REBAR W/ "DAUGHMAN" CAP (FOUND)
  - = 1/4 REBAR W/ "TUMBLE" (FOUND)
  - △ = 1/4 REBAR W/ "TUMBLE" CAP (FOUND)
  - = 3/4" IRON W/ "TUMBLE" CAP (FOUND)
  - = 3/4" IRON W/ "TUMBLE" (FOUND)
- (M) = MEASURED  
(P) = PLATTED  
(D) = DESCRIBED  
(C-P) = CALCULATED PER PLATTED INFO.

BENCHMARK:  
CITY OF WICHITA BENCHMARK (M.S.C. - SE COR. OF  
INTERSECTION OF 47TH ST. S. AND WEST STREET  
54.00' S. OF CENTERLINE  
99.00' E. OF P.P. ON SW COR.  
23.00' S. OF P.P.  
ELEV. = 22.29 CITY DATUM

NOTE:  
A MASTER GRADING PLAN FOR DRAINAGE HAS BEEN DEVELOPED FOR THIS  
SUBDIVISION AND IS ON FILE WITH THE CITY OF WICHITA, KANSAS.  
ALL DRAINAGE EASEMENTS, RIGHTS-OF-WAY, OR RESERVES SHALL REMAIN  
AT ESTABLISHED GRADES OR AS MODIFIED WITH THE APPROVAL OF THE  
CITY ENGINEER OF THE CITY OF WICHITA, KANSAS. NO OBSTRUCTIONS WHICH  
IMPED THE FLOW OF THIS DRAINAGE SYSTEM SHALL BE ALLOWED.