

# NEWMARKET SQUARE

AN ADDITION TO WICHITA, SEDGWICK COUNTY, KANSAS

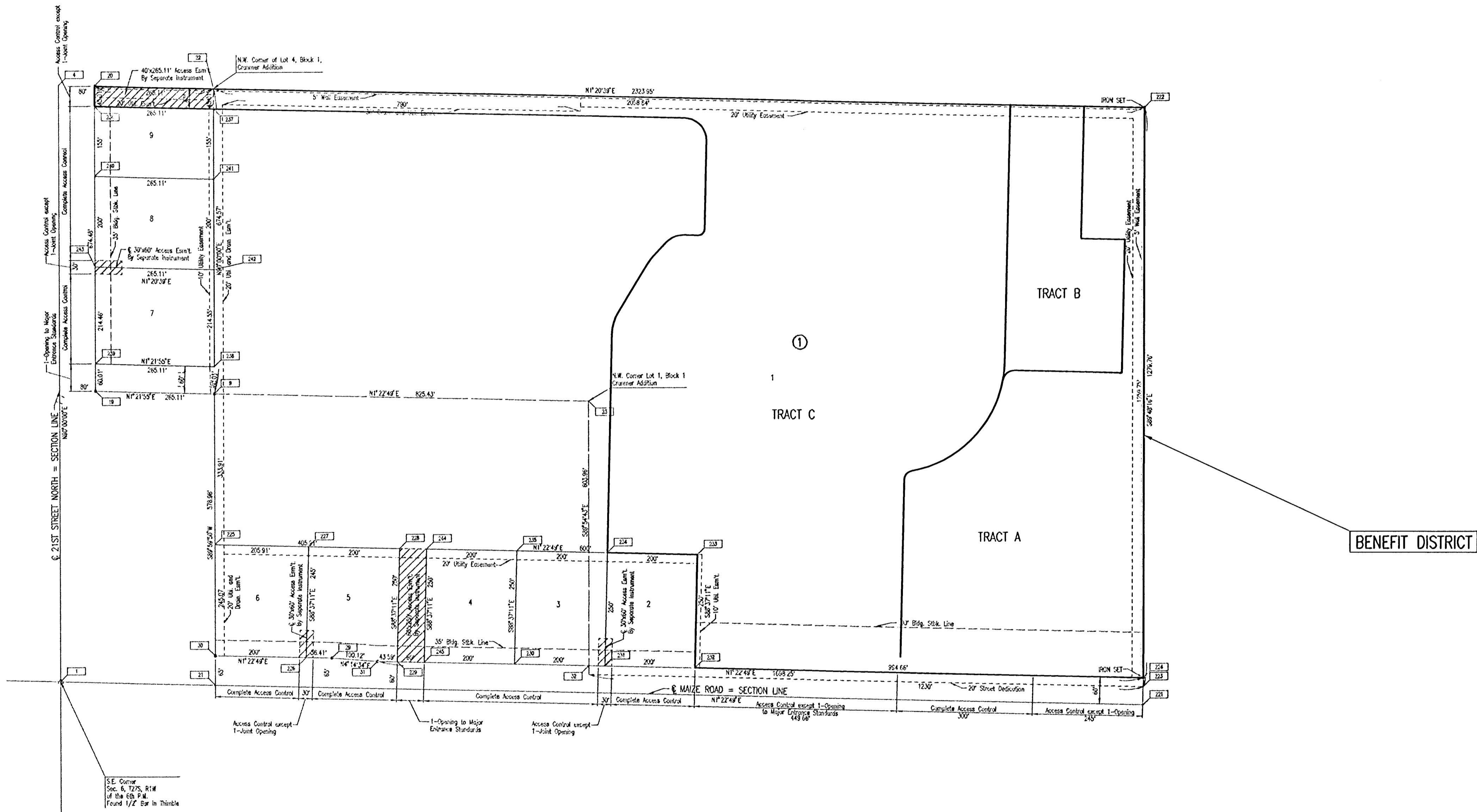
SCALE: 1"=150'

• = IRON FOUND

B.M.: CITY OF WICHITA STD. BENCH MARK DISC 64" EAST AND 99" SOUTH OF THE INTERSECTION OF THE CENTERLINES MAIZE ROAD AND 21ST STREET NORTH.  
ELEV.=164.3 CITY DATUM  
ELEV.=1351.7 M.S.L.

BENCHMARK #201 - CHISELED "G" W. END C/G MEDIAN AT MAIN ENTRANCE NEW MARKET SQUARE OFF OF MAIZE RD. AT 3 WAY PARKING LOT INTERSECTION.  
ELEVATION= 165.18 CITY DATUM  
1352.58 N.G.V.D.

ESTABLISHED MINIMUM PAD (LOWEST OPENING) ELEVATIONS ARE AS FOLLOWS:  
LOT 1, BLOCK 1 = 165.6 CITY DATUM, 1353.0 M.S.L.



DSNR: BER OPER: SAW SCALE: 1"=150.00  
Q:\2005\05354\Traffic Signal\05354-02-BENDISMAP 05-30-2005 11:18:19 am

	No.		Revision	By	Date
	CITY OF WICHITA, KANSAS JAMES L. ARMOUR, P.E. - CITY ENGINEER NEWMARKET SQUARE ENTRANCE AND MAIZE ROAD <b>BENEFIT DISTRICT</b> CITY OF WICHITA PROJECT NO. 472-84276				
	<b>Professional Engineering Consultants, P.A.</b> 303 S. TOPEKA • WICHITA, KANSAS 67202 316-262-2691 • FAX 316-262-3003				
	Designed by	BER	Job No.	05354	Sh.
Drawn by	SAW	Date	AUGUST 2005		