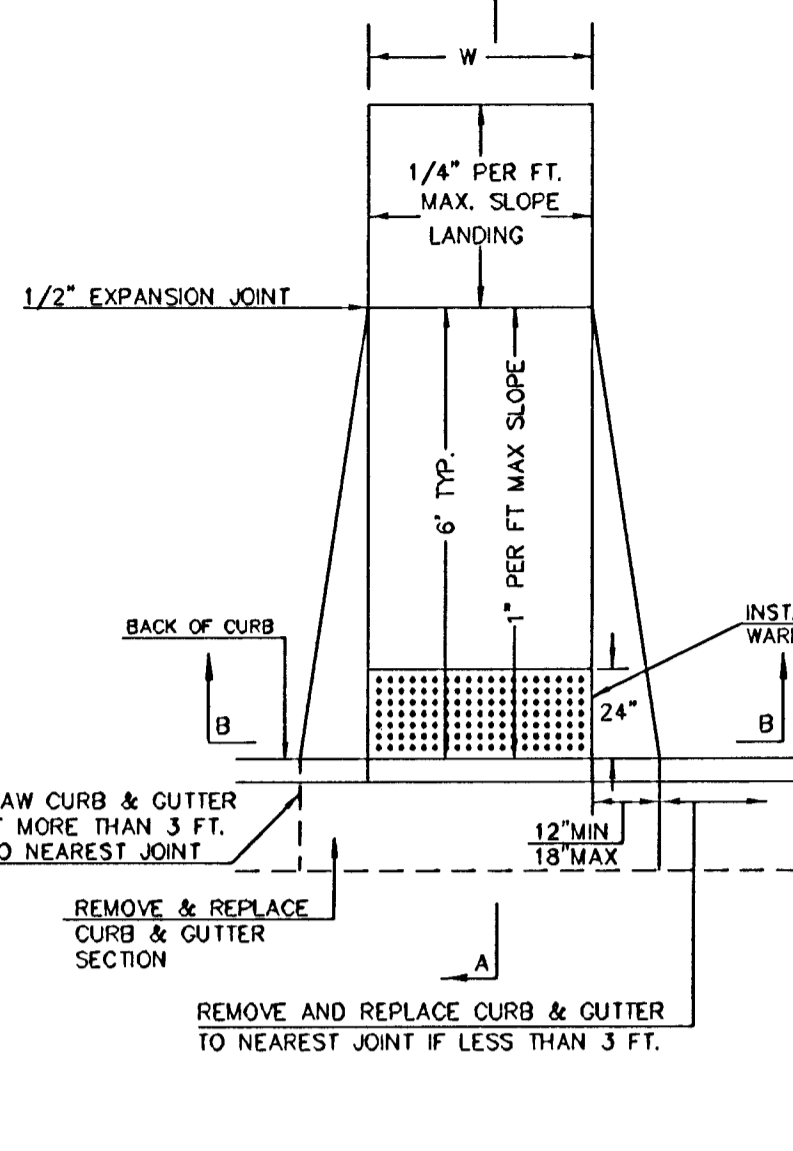
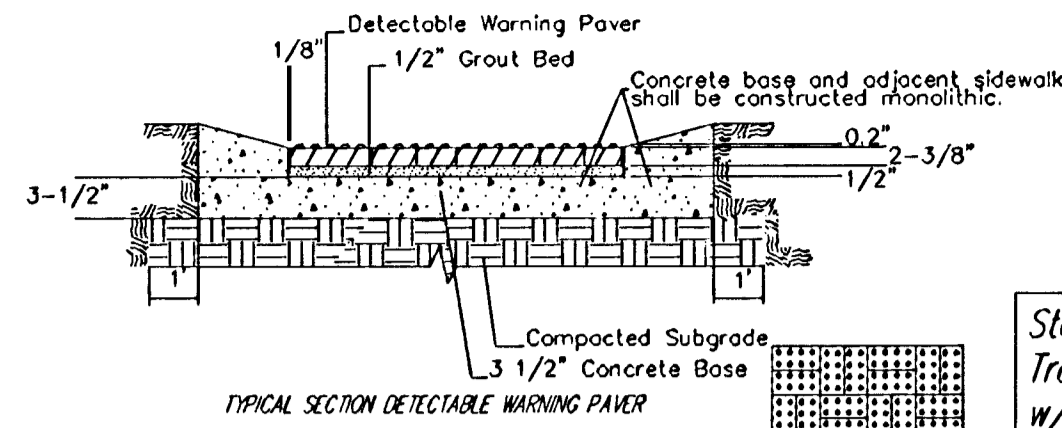


W = 4'0" FOR STANDARD RAMP  
 W = 5'0" FOR RAMPS AT SCHOOL CROSSWALKS  
 (OR TO MATCH EXISTING)

W = 6'0"

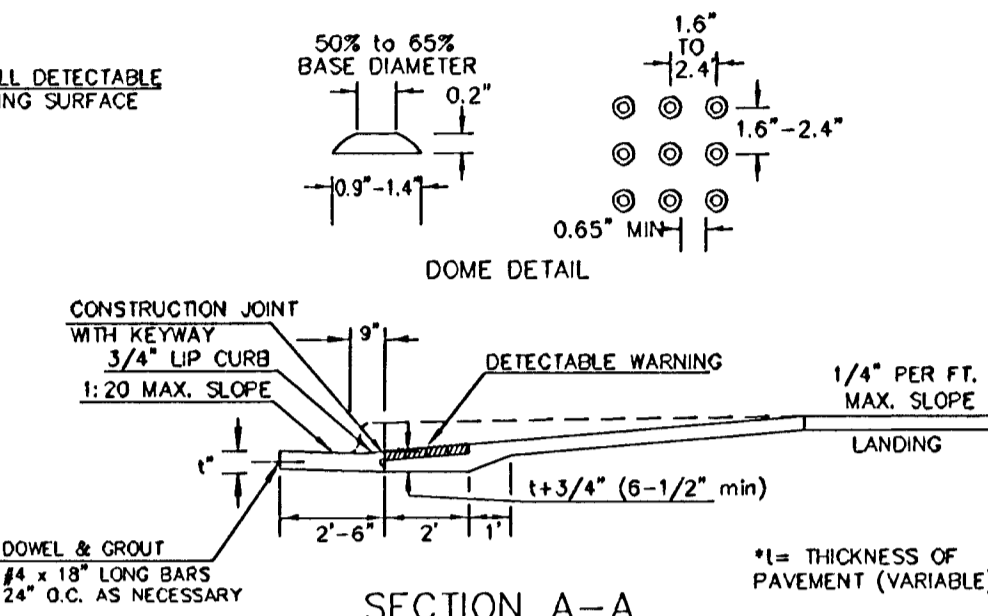


**(TYPE A) STANDARD WHEELCHAIR RAMP**  
 WITH DETECTABLE WARNING  
 CONSTRUCTION DETAIL FOR STREETS  
 WITH COMBINED CURB & GUTTER



NOTE: RAMPS TO COMPLY WITH LATEST ADAAG GUIDELINES  
 PAVES DETECTABLE WARNING PAVERS (OR AN APPROVED EQUIV.) SHALL  
 BE USED IN ALL WHEELCHAIR RAMPS. THE RED PAPER SHALL BE INSTALLED USING  
 A BASKET WEAVE/PARQUET PATTERN. OTHER PATTERNS MAY BE USED WITH APPROVAL OF  
 ENGINEER. SAND FILL JOINTS. ALIGN DOMES IN THE DIRECTION OF PEDESTRIAN TRAVEL.

SECTION B-B



SECTION A-A

Sta. 27+82.3, 58.0' Lt. Install  
 Traffic Signal Pole J.U.  
 w/46' Mast Arm  
 See Sheet No. 4

Sta. 28+69.2, 58.6' Lt. Install  
 Traffic Signal Pole J.U.  
 See Sheet No. 4

Sta. 27+93.0 47.5' Rt. Install  
 Traffic Signal Pole  
 w/24' Mast Arm,  
 See Sheet No. 4

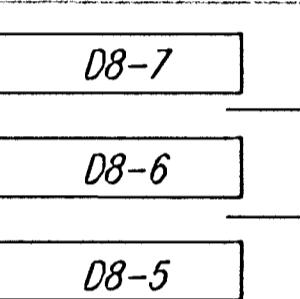
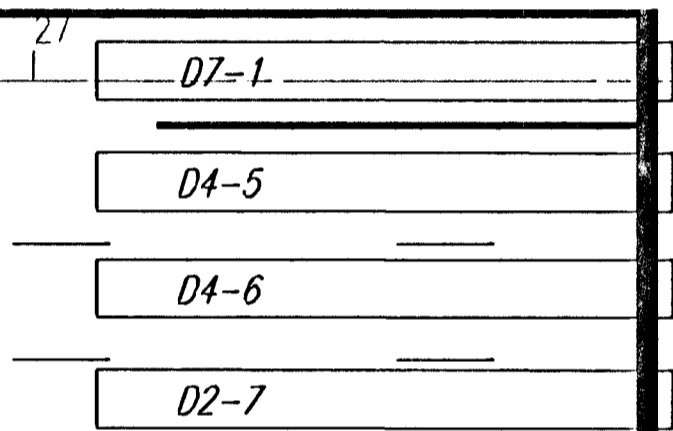
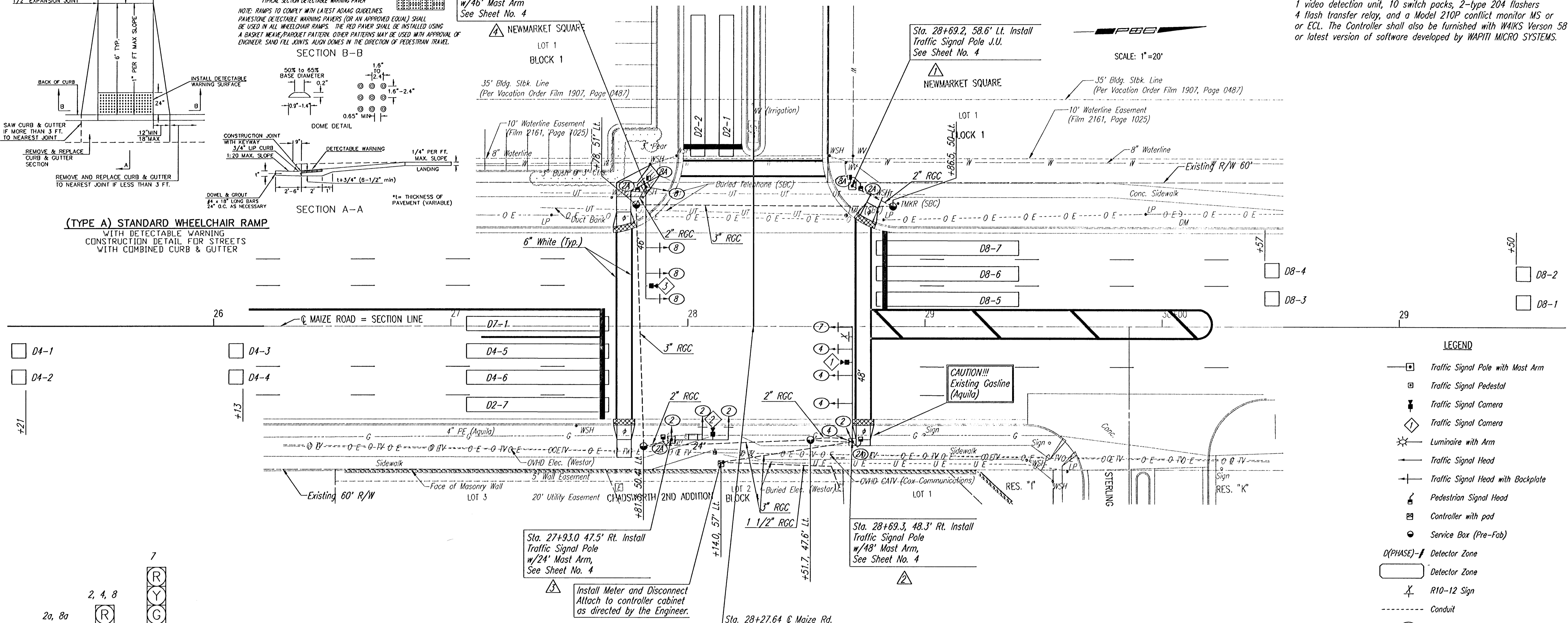
Sta. 28+69.3, 48.3' Rt. Install  
 Traffic Signal Pole  
 w/48' Mast Arm,  
 See Sheet No. 4

Install Meter and Disconnect  
 Attach to controller cabinet  
 as directed by the Engineer.

**CONTROLLER DESCRIPTION**

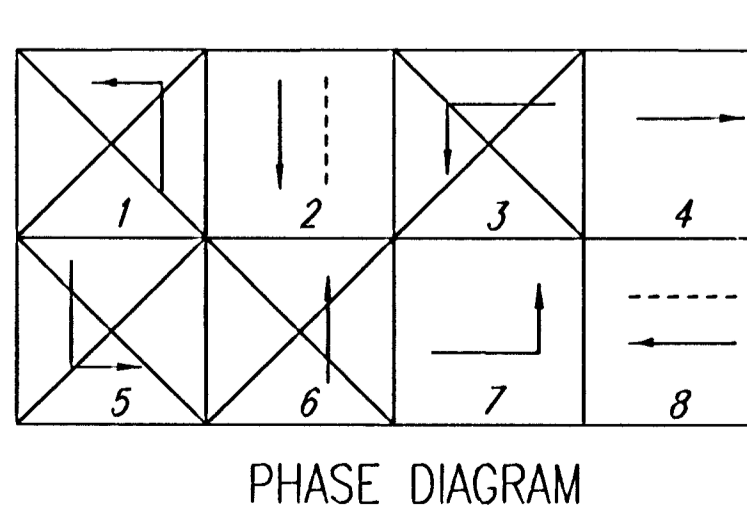
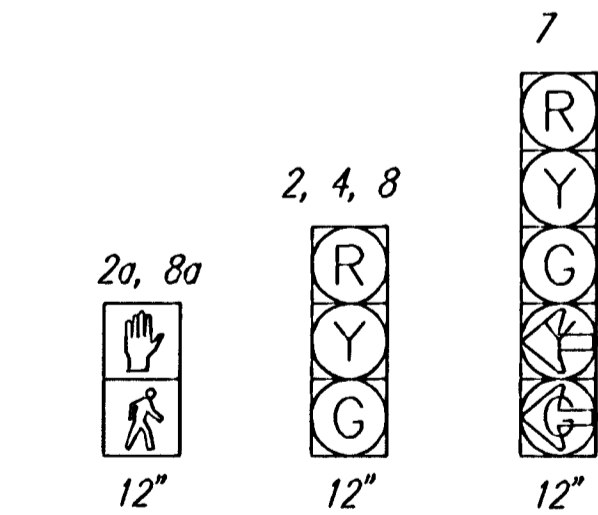
The Traffic Signal Controller shall comply with the requirements defined in the Specifications for a Type 170E Controller with 412b2 prom module and a 400 modem. It shall be furnished and installed with a Model 332 cabinet, 3-type 242 isolator units, 1 video detection unit, 10 switch packs, 2-type 204 flashers, 4 flash transfer relay, and a Model 210P conflict monitor MS or or ECL. The Controller shall also be furnished with WAIKS Version 58 or latest version of software developed by WAPITI MICRO SYSTEMS.

SCALE: 1"=20'



**LEGEND**

- Traffic Signal Pole with Mast Arm
- Traffic Signal Pedestal
- ⊕ Traffic Signal Camera
- ⊕ Traffic Signal Camera
- ⊕ Luminaire with Arm
- ⊕ Traffic Signal Head
- ⊕ Traffic Signal Head with Backplate
- ⊕ Pedestrian Signal Head
- ⊕ Controller with pad
- ⊕ Service Box (Pre-Fab)
- D(PHASE)-/ Detector Zone
- Detector Zone
- X R10-12 Sign
- Conduit
- ② Signal Phase
- △ Signal Pole Reference Number
- Street Name Sign
- ⊕ Construct Std. Wheelchair Ramp
- ⊕ Curb and Cutter Removal
- ⊕ Sidewalk Removal



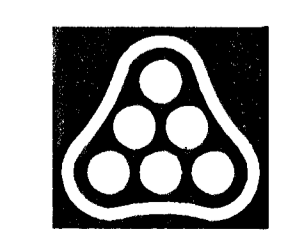
MAIZE ROAD AND NEWMARKET SQUARE ENTRANCE								
	PHASE							
	1	2	3	4	5	6	7	8
MAX. I	-	30	-	80	-	-	30	80
MAX. II/HFDW	-	30	-	80	-	-	30	80
WALK	-	8	-	-	-	-	-	8
FLASH DW	-	25	-	-	-	-	-	20
MAX. INITIAL	-	8.0	-	8.0	-	-	6.0	8.0
MIN. GREEN	-	10.0	-	10.0	-	-	5.0	10.0
T B R	-	-	-	25	-	-	1.0	-
T T R	-	-	-	15	-	-	1.0	-
OBSERVE GAP	-	-	-	-	-	-	-	-
PASSAGE	-	1.0	-	2.0	-	-	1.0	2.0
MIN. GAP	-	1.0	-	1.0	-	-	1.0	1.0
ADDED ACTUATION	-	2.0	-	2.0	-	-	1.0	2.0
YELLOW	-	3.5	-	4.0	-	-	3.0	4.0
RED CLEAR	-	2.0	-	2.0	-	-	1.0	2.0
RED REVERT	-	-	-	-	-	-	-	-
WALK II	-	-	-	-	-	-	-	-

The signal shall dwell green in #4 & #8.

FUNCTION TABLE								
FUNCTION	PHASE							
	1	2	3	4	5	6	7	8
VEHICLE RECALL	-	-	-	X	-	-	-	X
PED RECALL	-	-	-	-	-	-	-	-
RED LOCK	-	-	-	-	-	-	-	-
YELLOW LOCK	-	X	-	-	-	-	X	-
PERMIT	-	X	-	X	-	-	X	X
PED PHASES	-	X	-	-	-	-	-	X
LEAD PHASES	X	-	X	-	X	-	X	-
DOUBLE ENTRY	-	-	-	X	-	-	-	X
SEQUENTIAL TIMING	-	-	-	-	-	-	-	-
START-UP YELLOW	-	X	-	-	-	-	-	-
OVERLAP A	-	-	-	-	-	-	-	-
OVERLAP B	-	-	-	-	-	-	-	-
OVERLAP C	-	-	-	-	-	-	-	-
OVERLAP D	-	-	-	-	-	-	-	-
EXCLUSIVE	-	-	-	-	-	-	-	-
SIMULTANEOUS GAP	-	-	-	-	-	-	-	-

DETECTOR SUMMARY							
CAMERA NO.	DETECTION ZONE	MODE	SIZE (LxW)	PHASE CALLED	PHASE EXTENDED	DELAY/STRETCH TIMER	INITIAL SETTING (SEC.)
1	D7-1	PRESENCE	60x6	7	7	-	-
1	D4-1to4	PULSE	6x6	4	4	S	1.0
1	D4-5&6	PRESENCE	60x6	4	4	-	-
2	D2-1	PRESENCE	60x6	2	2	-	-
2	D2-2	PRESENCE	60x6	2	2	D	3.0
3	D8-1to4	PULSE	6x6	8	8	S	1.0
3	D8-5&6	PRESENCE	60x6	8	8	-	-
3	D8-7	PRESENCE	60x6	8	8	D	3.0

SEE SHEET NO. 4 FOR WIRING DIAGRAM



No.	Revision	By	Date

CITY OF WICHITA, KANSAS  
 JAMES L. ARMOUR, P.E. - CITY ENGINEER  
 NEWMARKET SQUARE ENTRANCE AND MAIZE ROAD

**TRAFFIC SIGNAL PLAN**

CITY OF WICHITA PROJECT NO. 412-84216

**Professional Engineering Consultants, P.A.**  
 303 S. TOPEKA • WICHITA, KANSAS 67202  
 316-262-2691 • FAX 316-262-3003

Designed by BER Job No. 05354  
 Drawn by SAW Date AUGUST 2005 SH. 3 of 8

DSNR: BER OPER: SAW SCALE: 1"=20.00  
 C:\2005\05354\Traffic Signal\05354-03-TrafficSignalPlan 09-30-2005 11:17:41 am