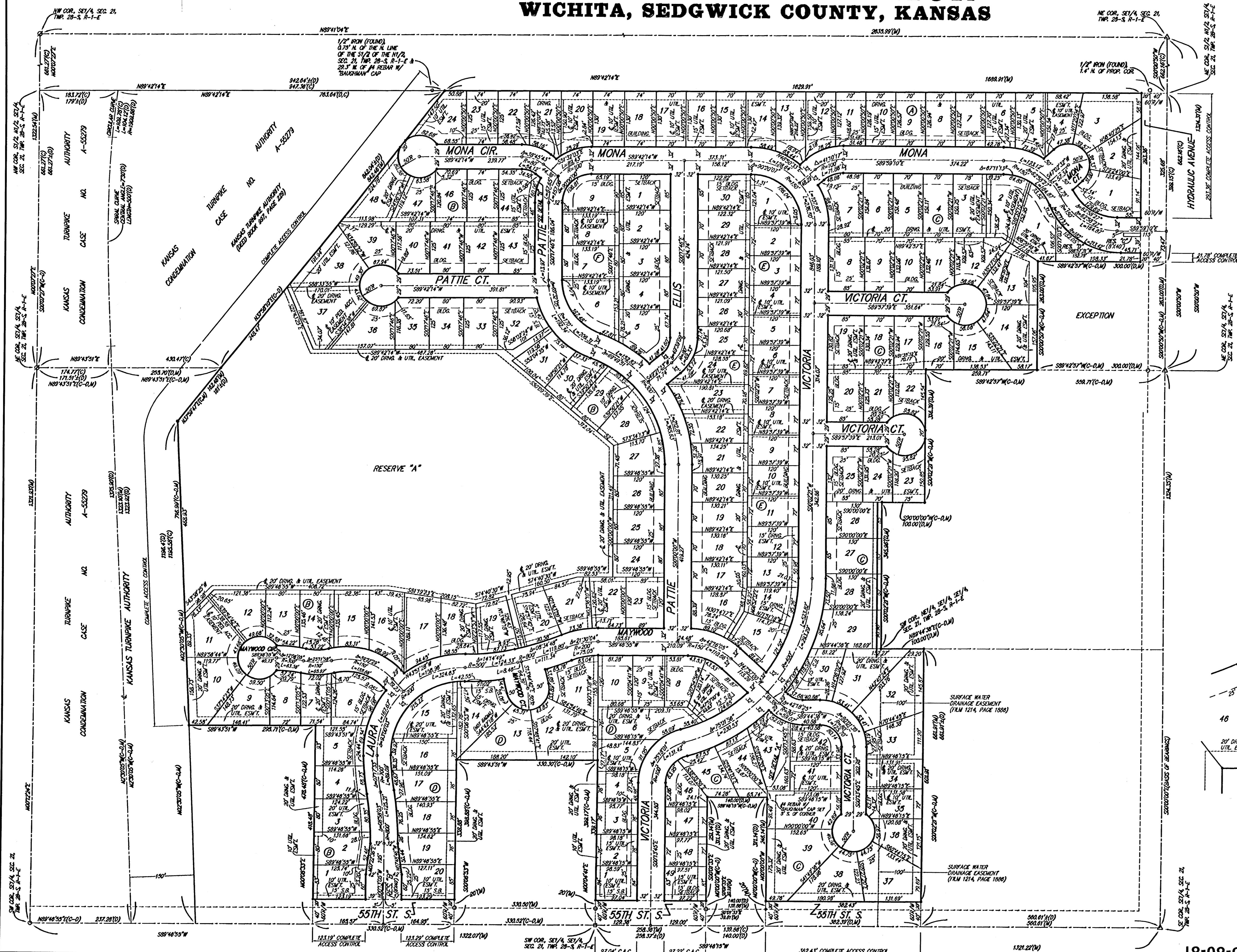
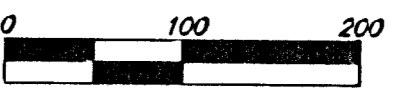


RIVENDALE ADDITION WICHITA, SEDGWICK COUNTY, KANSAS

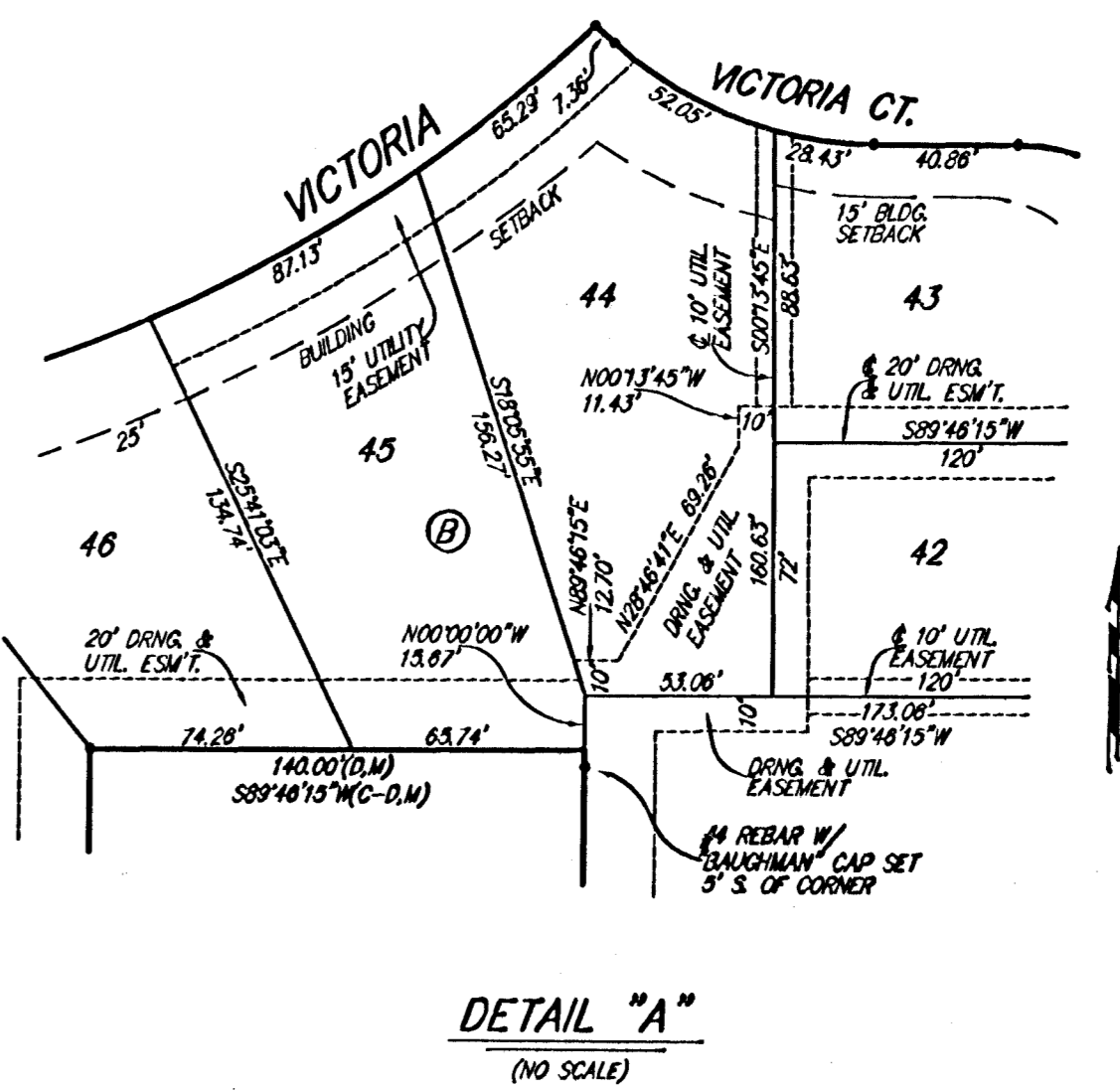
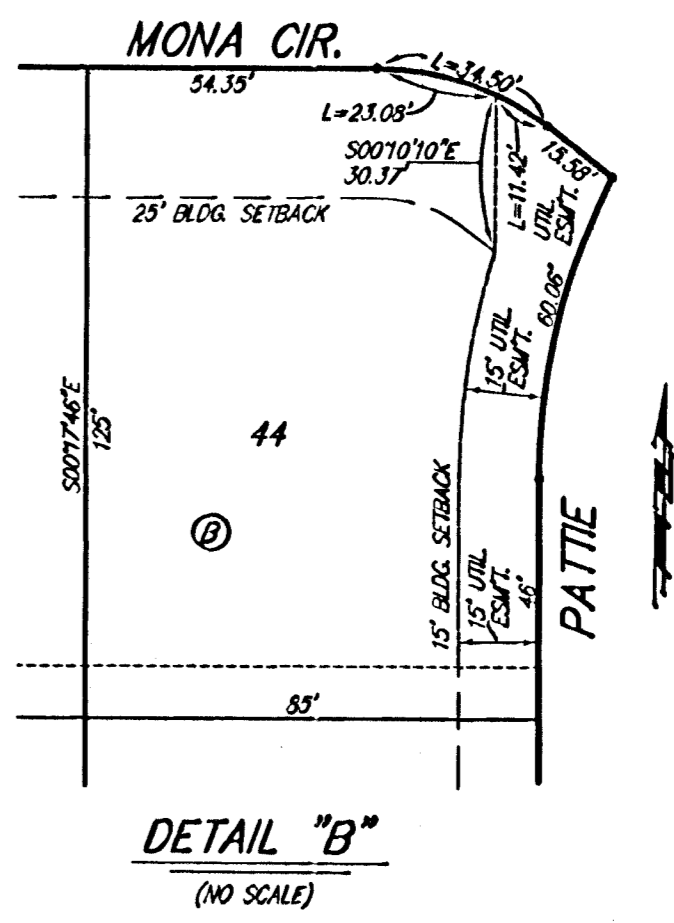


- = #4 REBAR W/ 'BAUGHMAN' CAP (SET)
 - △ = 3/4" IRON IN TRIMBLE (FOUND)
 - = 1/2" IRON (FOUND)
 - = 3/4" IRON (FOUND)
 - = 1"-K" NAIL (FOUND)
- (U) = MEASURED
(D) = DESCRIBED
(C) = CALCULATED
(C-D) = CALCULATED PER DESCRIBED INFO.



LOT	BLOCK	ELEVATION
11-38	B	78.0

BENCHMARK:
CITY OF WICHITA BENCHMARK DISC,
HYDRAULIC AND 55TH STREET SOUTH
42.00' N. OF E.
40.70' N. OF E.
3.70' N. OF E. OF POWER POLE
34.20' N.W. OF SE. COR., SEC. 21,
TWP. 28-S, R-1-E
ELEV. = 7819.0 CITY DATUM
(1284.59 NGVD25)



NOTES:
A master grading plan for drainage has been developed for this subdivision and is on file with the City of Wichita, Kansas. All drainage easements, right-of-ways or reserves shall remain established grades or as modified with the approval of the City Engineer of the City of Wichita, Kansas. No obstructions which impede the flow of this drainage system be allowed.

18-08-01-08