

LINE 1

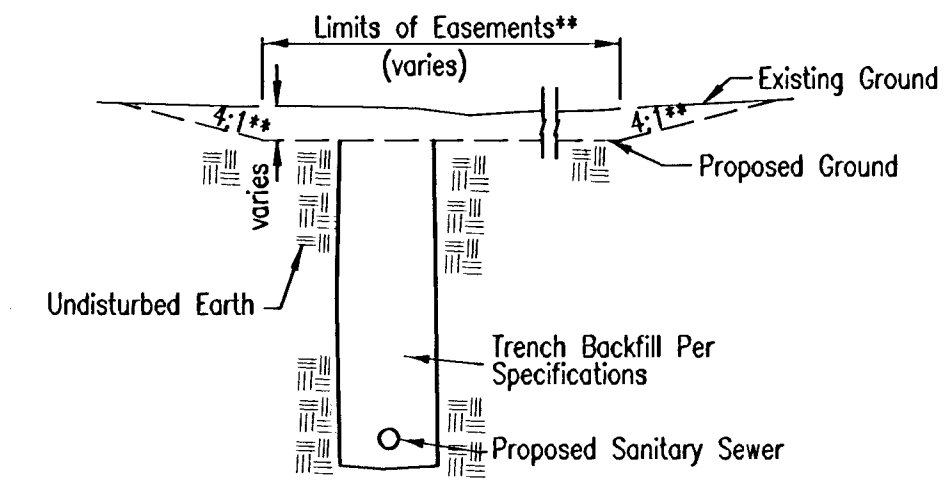
1595 L.F. X 22' X 0.25' = $\frac{8,773 \text{ C.F.}}{27}$ = 325 C.Y. CUT

1595 L.F. X 22' X 0.25' = $\frac{8,773 \text{ C.F.}}{27}$ = 325 C.Y. FILL

LINE 2

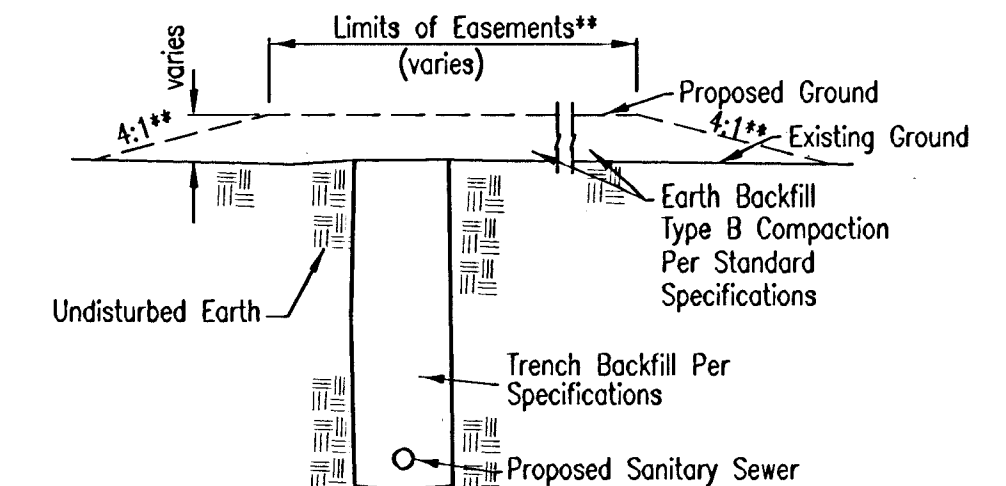
732 L.F. X 22' X 0.25' = $\frac{4,026 \text{ C.F.}}{27}$ = 149 C.Y. CUT

732 L.F. X 22' X 0.25' = $\frac{4,026 \text{ C.F.}}{27}$ = 149 C.Y. FILL



TYPICAL SECTION

"CUT" SITUATIONS

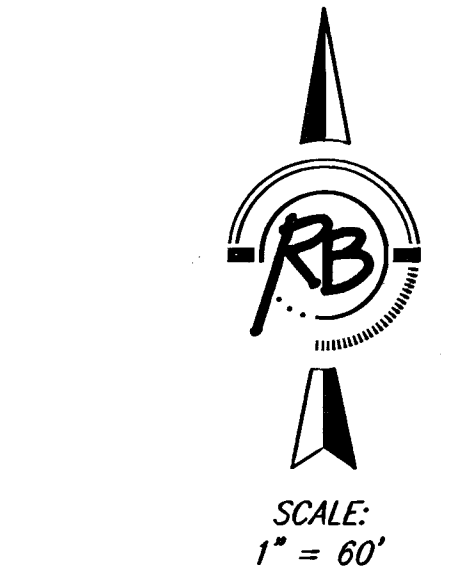
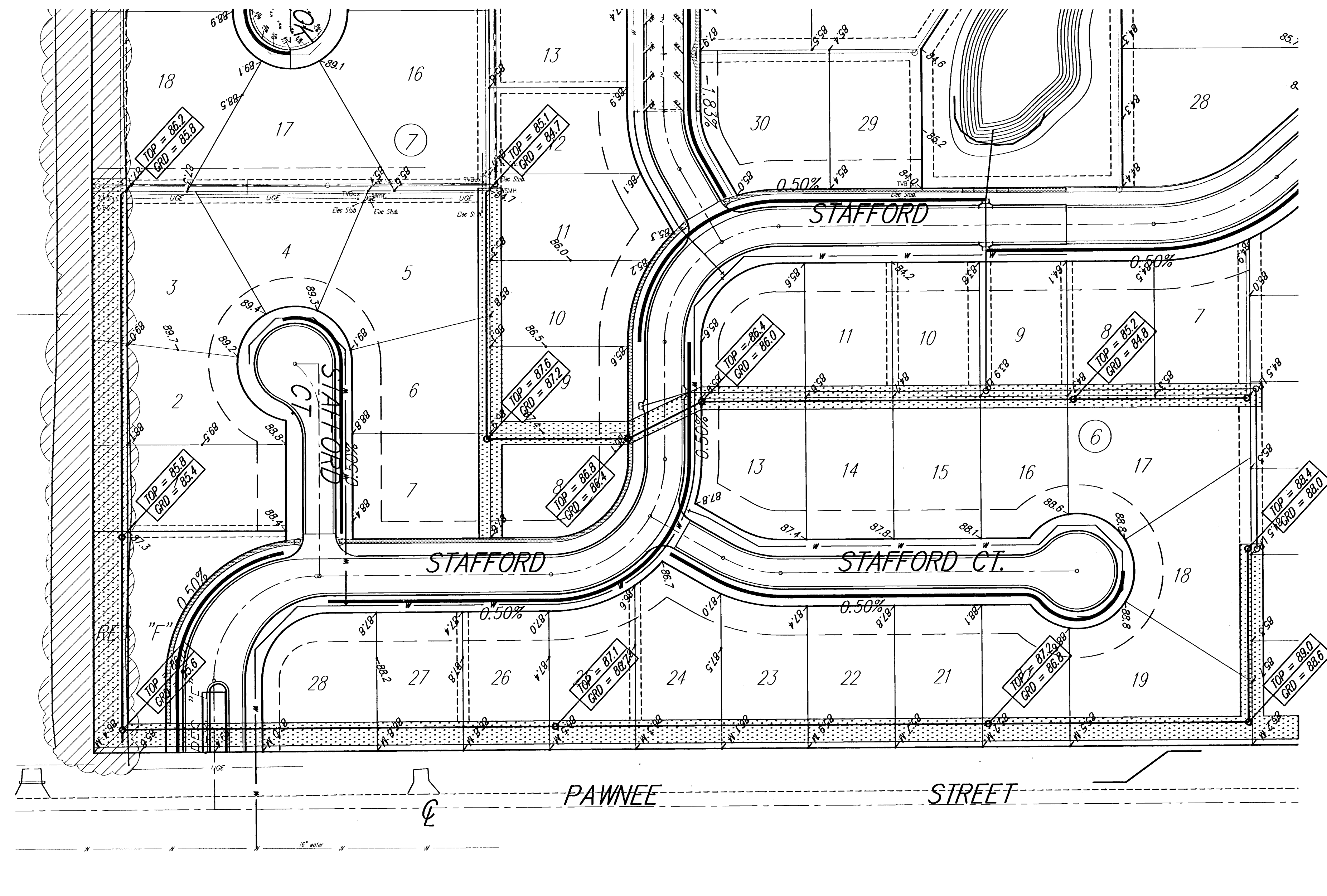


TYPICAL SECTION

"FILL" SITUATIONS

**Graded widths and slopes may vary as approved by the Engineer to minimize conflict with existing trees.

EASEMENT GRADING DETAILS



AREAS TO BE GRADED

GRADE EASEMENTS 20' WIDE EXCEPT IN AREAS INDICATED.

Easement Grading will be bid on a lump sum basis for grading the easements to the profile and elevations shown on the Easement Grading Plan (this sheet). Approximate quantities of earthwork for easement grading are shown below. These approximate quantities are given for information only. The Contractor should verify the quantities when preparing the proposal.

Cut 474 C.Y. (Approximate)
Fill 474 C.Y. (Approximate)

BRENTWOOD SOUTH

Brentwood South Addition, Sanitary Sewer Improvements EASEMENT GRADING PLAN WICHITA, KANSAS			
	Ruggles & Bohm, P.A. Engineering, Surveying, Land Planning		DESIGN KWL
	924 North Main Wichita, Kansas 67203 www.rbkansas.com		(316) 264-8008 (316) 264-4621 fax E-mail: info@rbkansas.com
DRAWING FILE Sanitary Sewer [Easmt Grading]	PROJECT NUMBER 468-84071	DATE Sept. 13, 2005	SHEET 5 OF 14