

BENCHMARKS

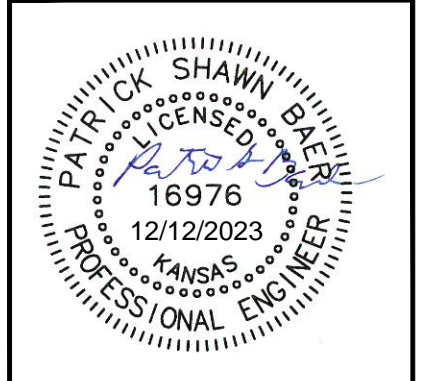
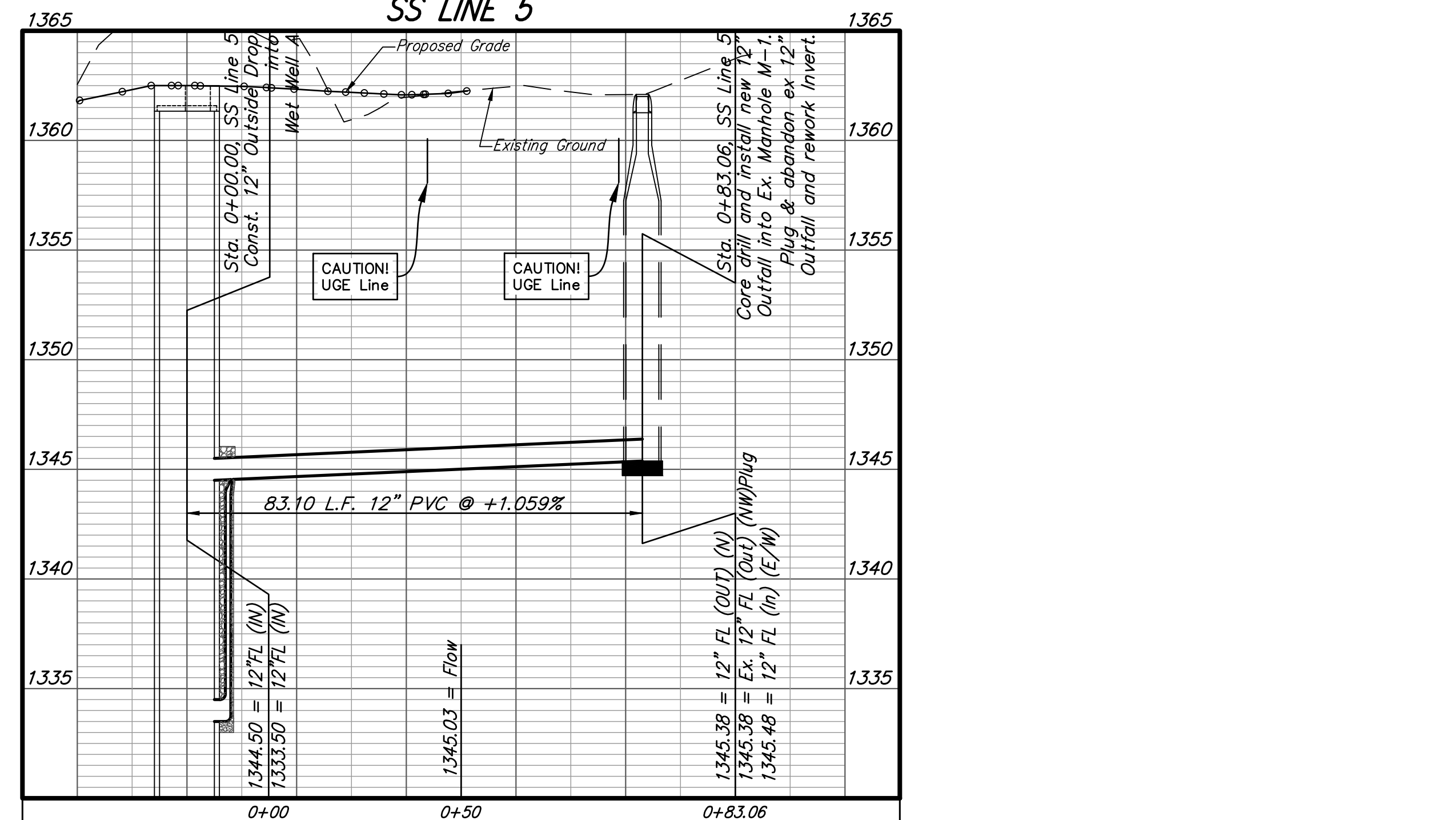
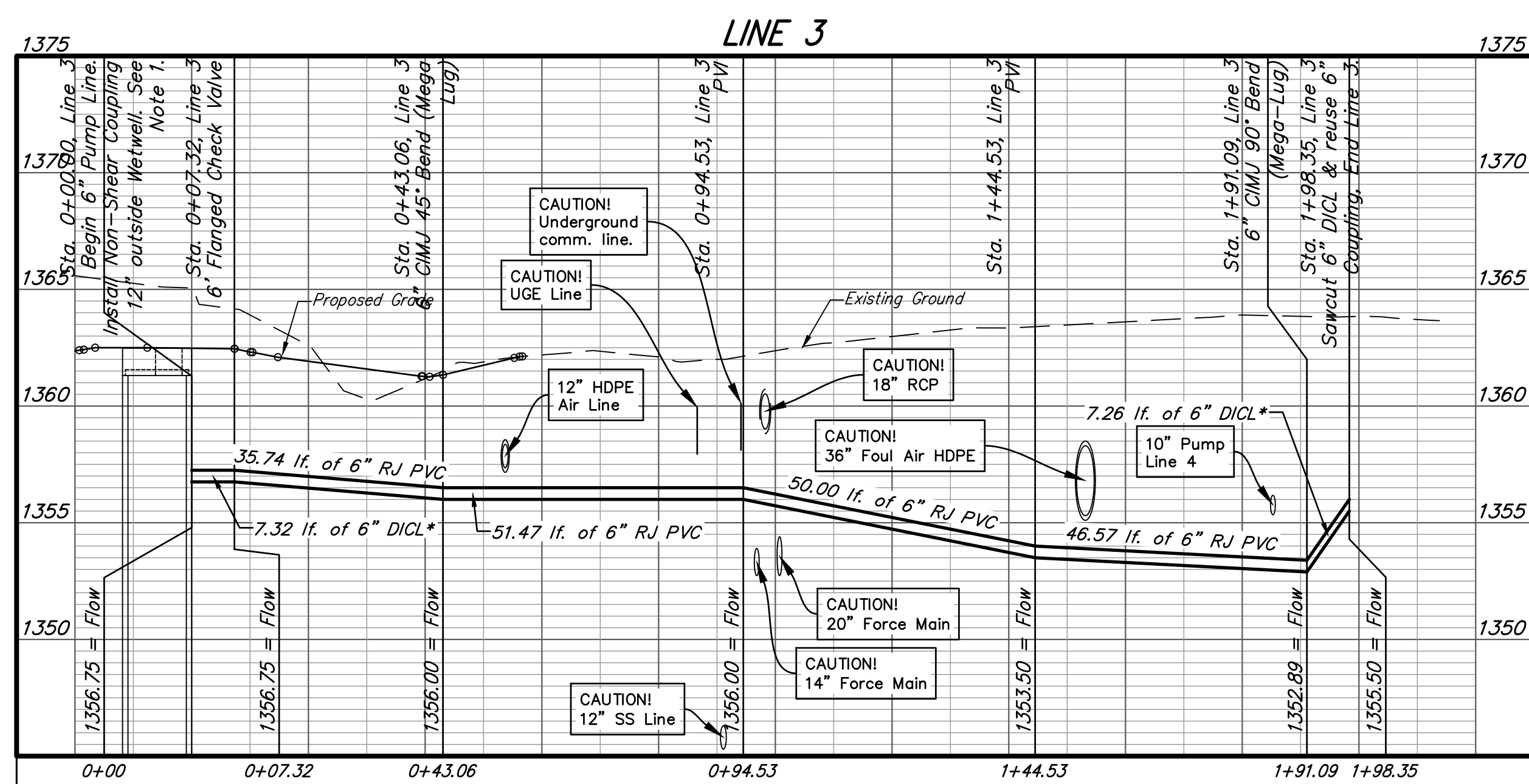
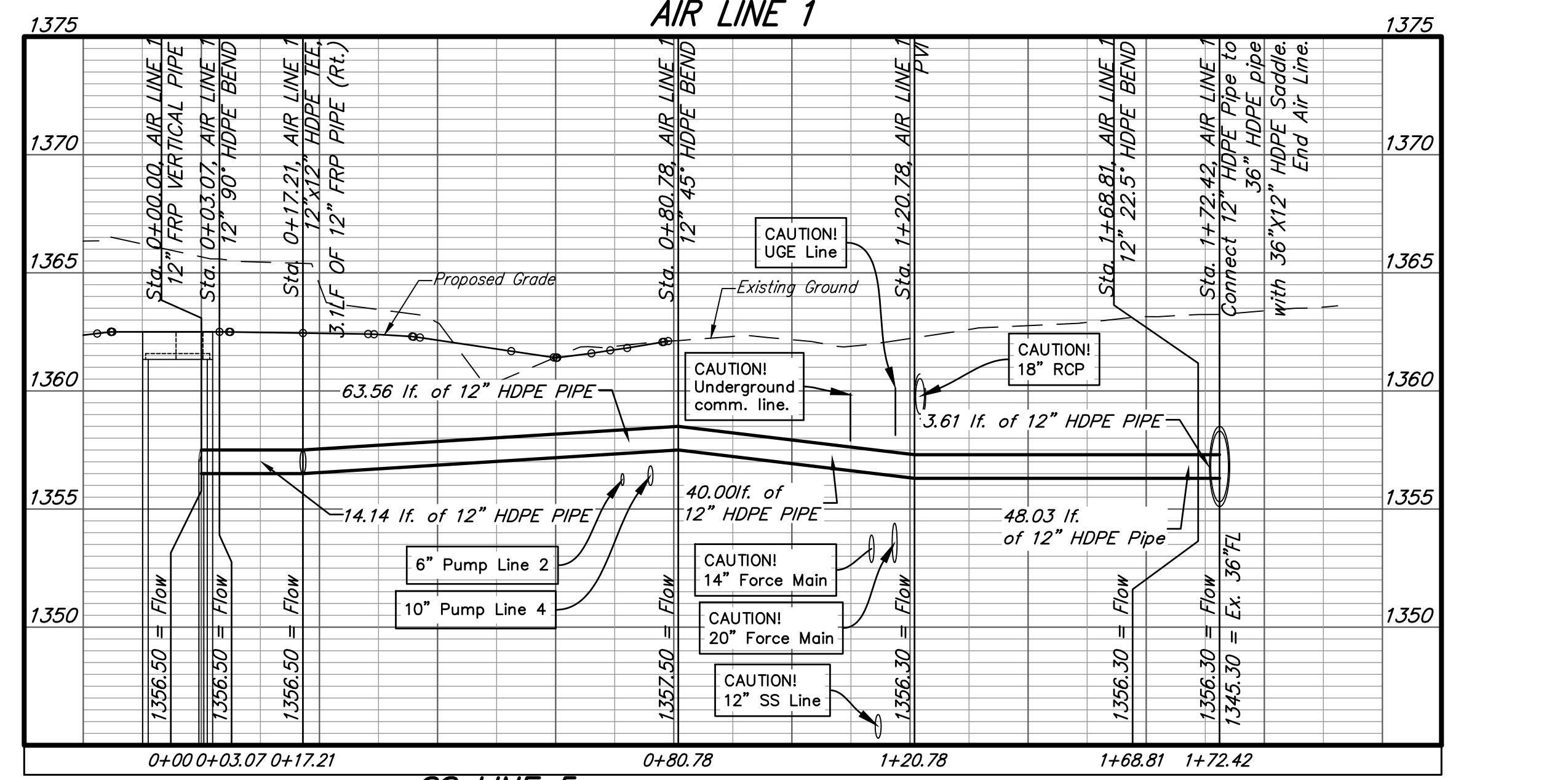
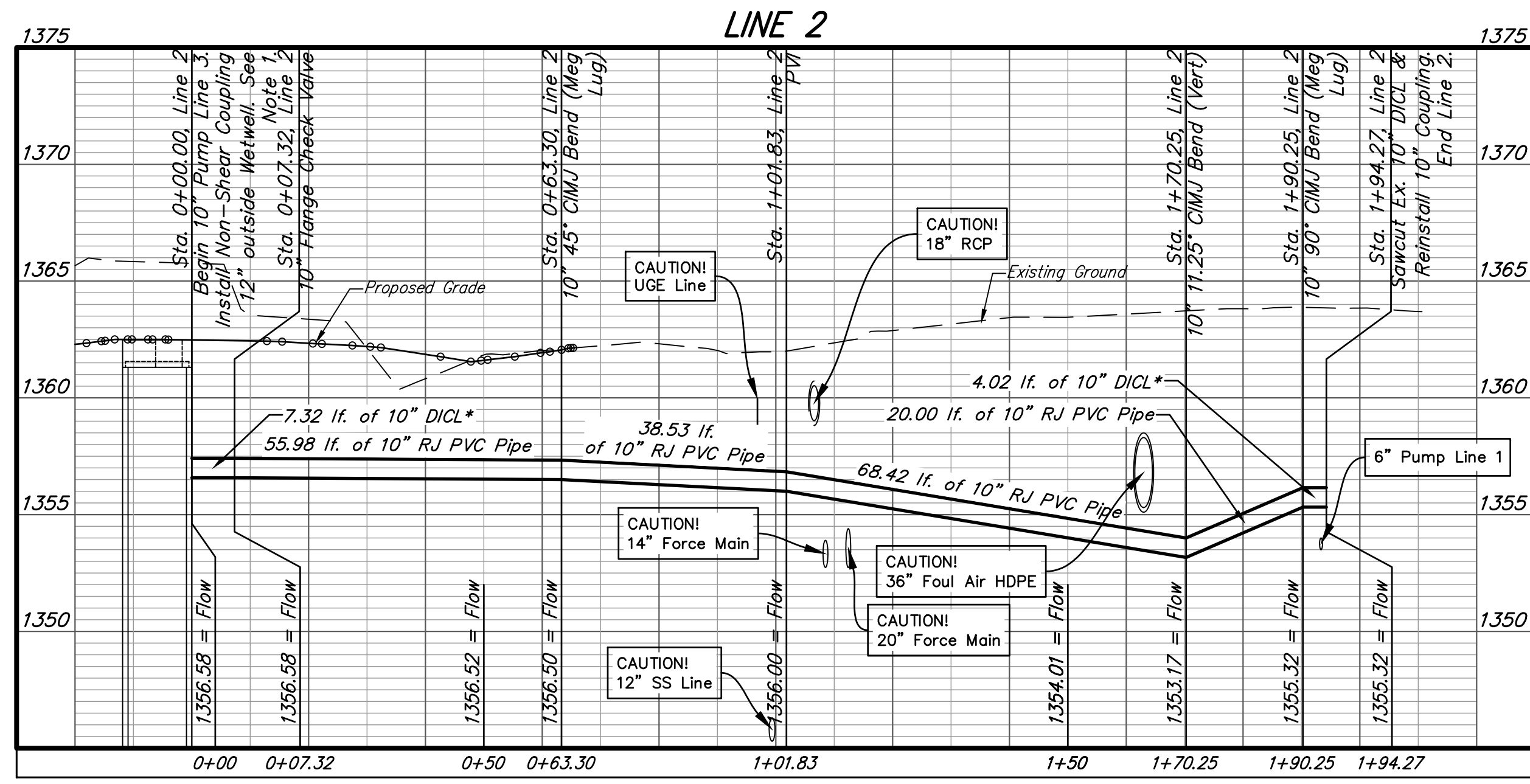
BM #1:
Mag Nail on North edge of road,
78' West of North Entrance Gate
into Plant #3 Facility.
Elev. = 1361.84 NGVD88

BM #2:
RR Spike in East Transmission
power pole, 100' West and 4' North
of the NE corner of Sewer
Treatment Plant #3 Add.
Elev. = 1357.64 NGVD88

BM #3:
RR Spike in West Transmission
power pole, 52' North of 37th St.
N. E. & SE corner of Sewer
Treatment Plant #3 Add.
Elev. = 1360.00 NGVD88

Note 1: Sheer Coupling on Lines 1 thru 4
Contractor to install a pipe Break 12"
outside the Wet well on the pump lines 1
thru 4. Install Non-Shear Couplings, 2-6"
and 2-10", Fernco Model. Two CSST
5.1x6.5 for 6" & two 1056-1010RC
Couplings, or approved equal.

* Contractor to install Lined DICL
Pipe from Non-Shear Coupling to 5'
outside Check Valve Vault. Mega Lug connection
transition from DICL to PVC RJ Pipe.



**BAUGHMAN
COMPANY**

315 Ellis St.
Wichita, KS 67211
316-262-7271
BaughmanCo.com

PLANT #3 (NW)
WET WELL IMPROVEMENTS

**OPTION A
PIPE
PROFILES**

SANITARY SEWER
IMPROVEMENTS

PROJECT NUMBER:
468-2023-005511

DESIGN: PSB DRAWN: PS

DATE: Dec. 13, 2023

SHEET OF
9 29

File: C:\Users\pat.BAUGHMAN\Desktop\Projects\Copy30 Inch Gravity Sanitary Sewer Replacement (22-06-E186)\Engineering\piping.dwg