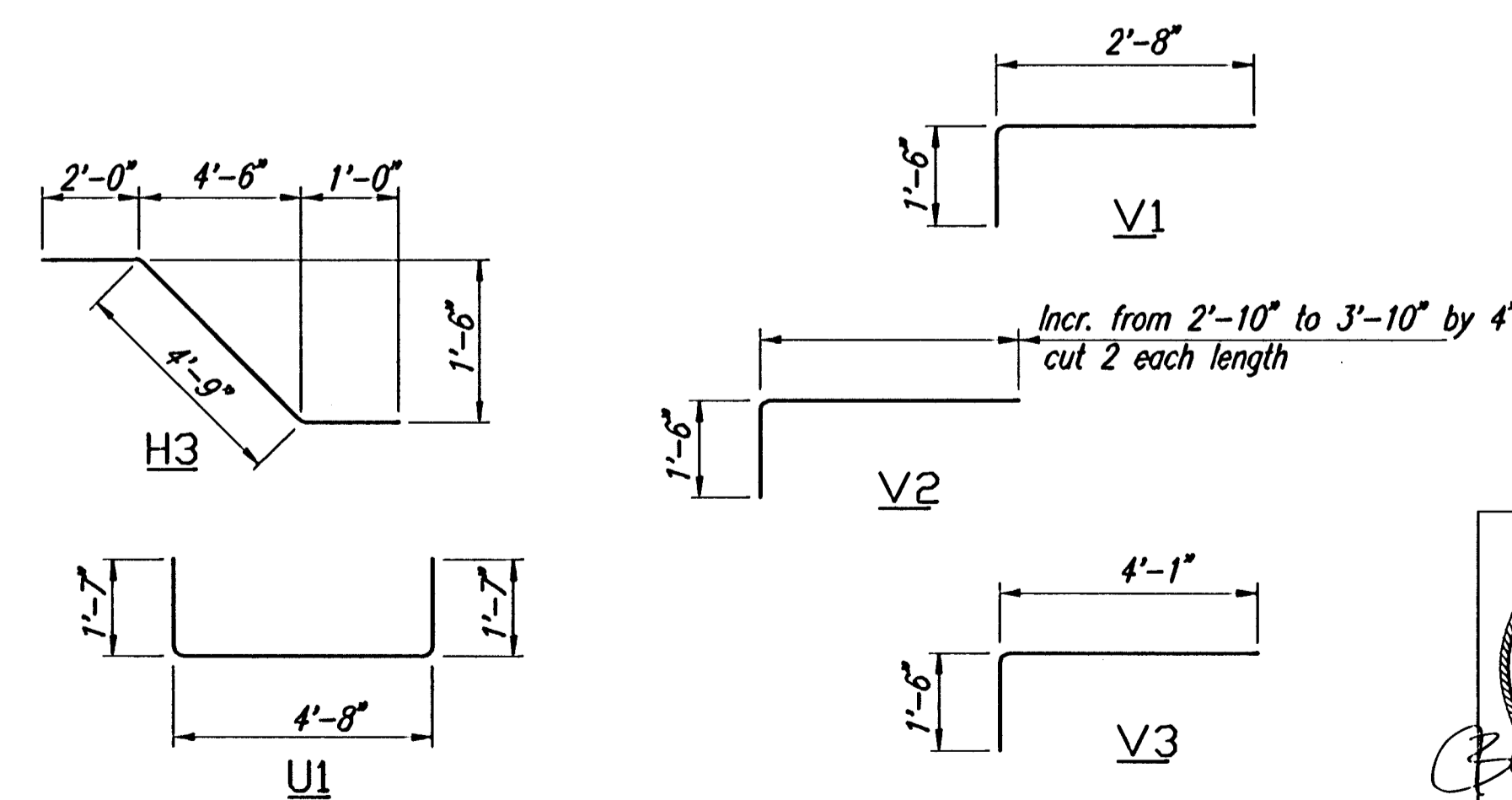
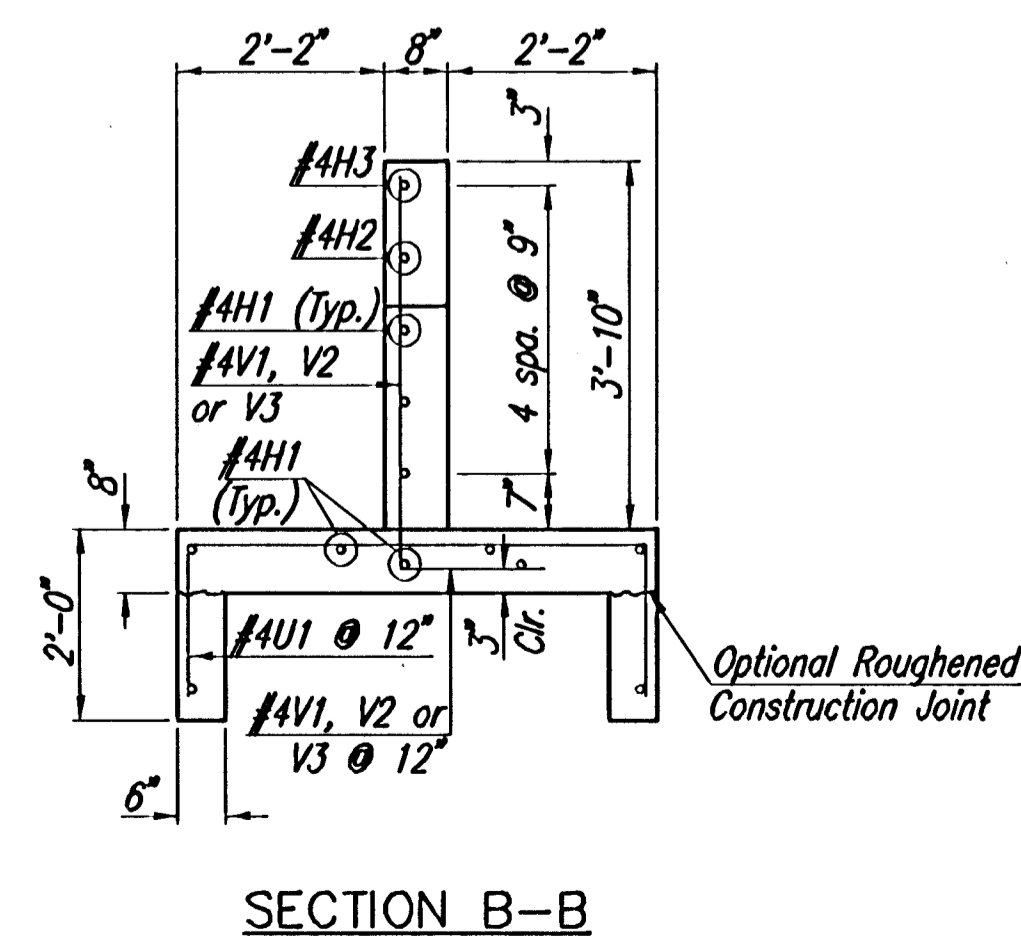
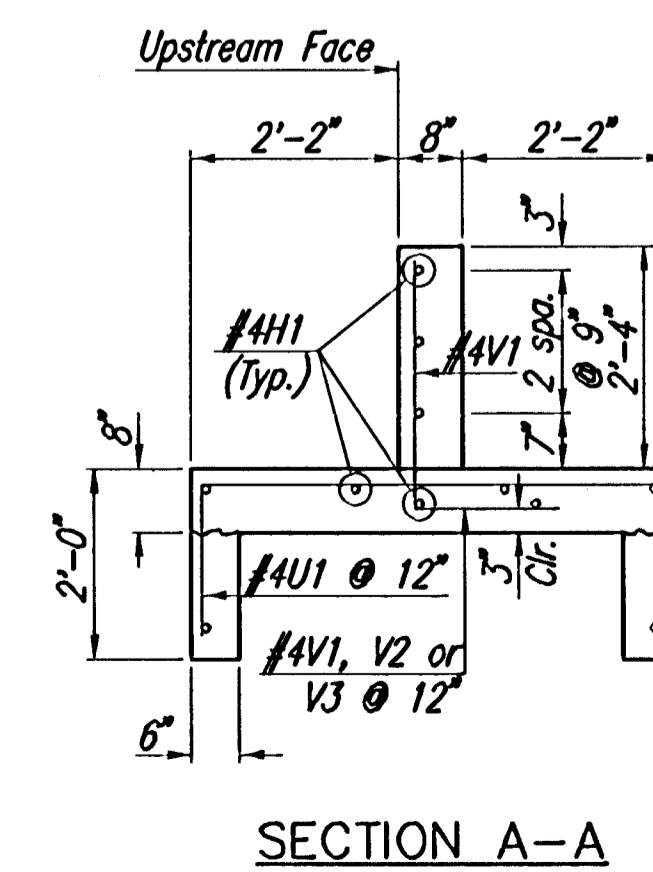
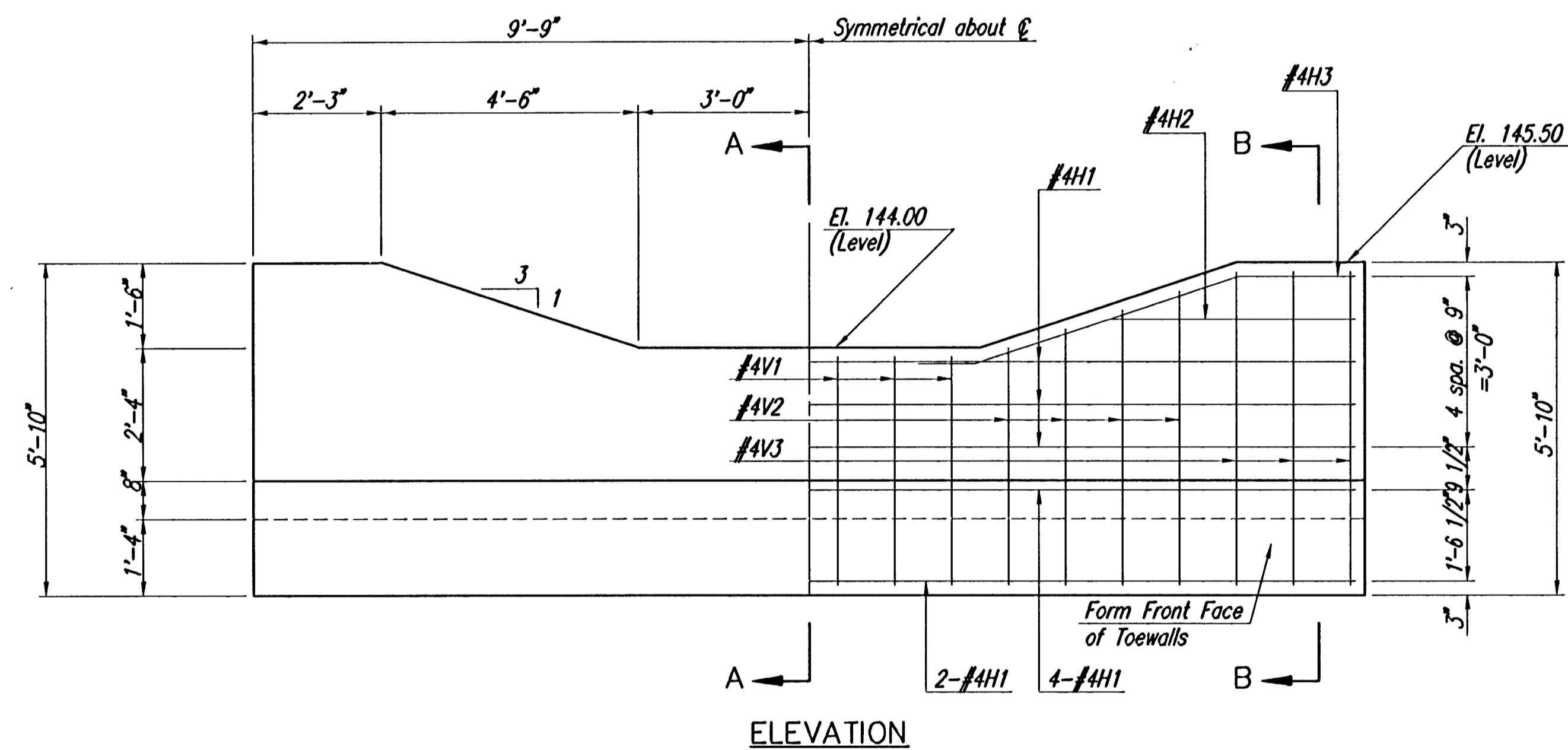
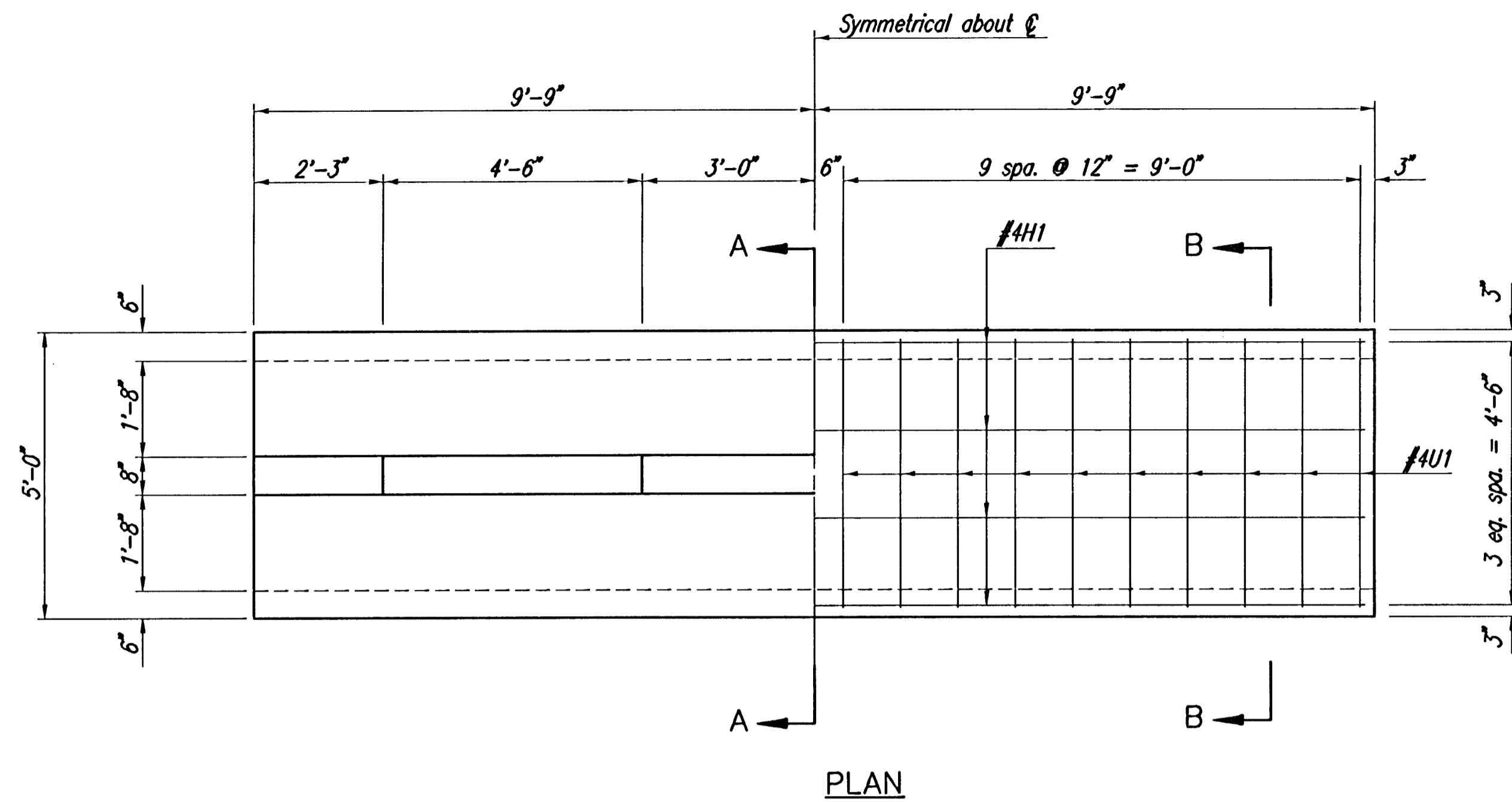
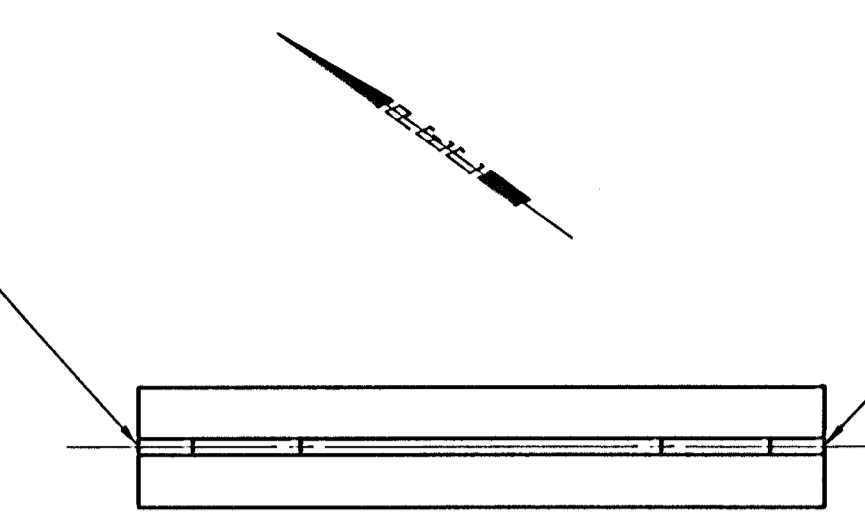


DSNR: BLB OPER: BJS SCALE: 1"=2'-00"  
 Q: 2005/05257/05257-C-19.SWEIR 06-16-2005 12:17:08 am



N-11,819.5481  
E-12,025.7319



N-11,803.7588  
E-12,037.1752

PLAN

BILL OF MATERIALS							
REINFORCING STEEL							
Straight Bars				Bent Bars *			
Mark	No.	Size	Length	Mark	No.	Size	Length
H1	11	#4	19'-2"	V1	6	#4	4'-2"
H2	2	#4	4'-9"	V2	8	#4	Varies
				V3	6	#4	5'-7"
				H3	2	#4	7'-9"
				U1	20	#4	7'-10"

\* See Bending Diagrams

SUMMARY OF QUANTITIES		
ITEM	QUANTITY	UNIT
Concrete	4.8	C.Y.
Reinforcing Steel	320	Lbs.

**GENERAL NOTES**

**UNIT STRESSES:**

CONCRETE:  $F_c=4,000$  P.S.I.,  $F_y=60,000$  P.S.I.  
 $F_c=1,600$  P.S.I.,  $F_s=24,000$  P.S.I.

CONCRETE: Concrete shall have a minimum 28 day compressive strength of 4,000 P.S.I.

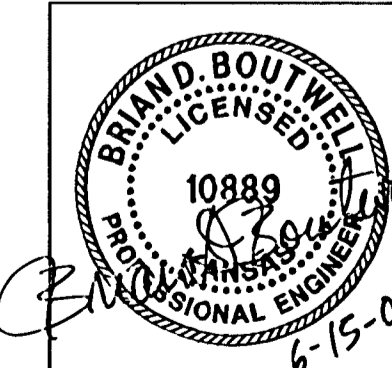
Bevel all exposed edges with a 3/4" triangular moulding, unless otherwise noted.

REINFORCING STEEL: All reinforcing steel shall conform to ASTM Designation A615 Grade 60 and shall be epoxy-coated. All dimensions relative to reinforcing are to centerline of bars unless otherwise noted. Bar bending and dimensions shall be as shown and noted on the bar bending diagrams. The concrete cover for all reinforcing shall be a minimum of 2" unless otherwise noted.

JOINTS: Construction joints shall only be formed at locations shown or as approved by the Engineer.

**BASIS OF PAYMENT**

The "R.C. Weir" shall be paid as a lump sum which shall include all labor, material, excavation, concrete, reinforcing steel and all other incidentals necessary to complete the work. Quantities shown are for information only.



No.	Revision	By	Date

AVALON PARK 3RD  
 STORM WATER DRAIN NO. 264  
**R.C. WEIR DETAILS**  
 JAMES L. ARMOUR, P.E.-CITY ENGINEER  
 CITY OF WICHITA PROJECT NO. 468-84011  
 Professional Engineering Consultants, P.A.  
 303 S. TOPEKA - WICHITA, KANSAS 67202  
 316-262-2691 • FAX 316-262-3003

Designed by	BDB, BLB	Job No.	35-05257
Drawn by	BJS	Date	February 2005

Sht. 11 of 31

**RECORD DRAWING**

