

GENERAL NOTES

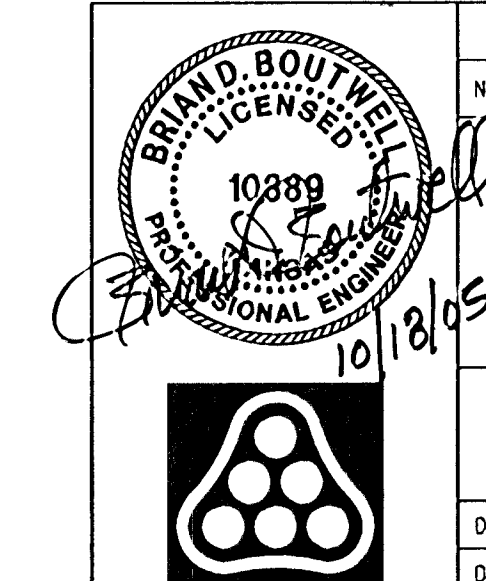
- UNDERGROUND UTILITY SERVICE LINES AND OVERHEAD UTILITY POLE LINES ARE TO BE ADJUSTED AS NECESSARY BY OTHERS PRIOR TO CONSTRUCTION UNLESS THE PLANS SPECIFICALLY CALL FOR OTHER ADJUSTMENT BY THE CONTRACTOR. EXISTING UTILITIES AND THEIR LOCATION, AS SHOWN ON THE PLANS, REPRESENT THE BEST INFORMATION OBTAINABLE FOR DESIGN. LOCATION INFORMATION HAS BEEN OBTAINED FROM THE VARIOUS UTILITY COMPANIES AND IS EITHER FROM COMPANY RECORD DRAWINGS OR COMPANY PROVIDED FIELD LOCATIONS. THE CONTRACTOR WILL BE REQUIRED TO WORK AROUND EXISTING UTILITIES WITHIN THE RIGHT-OF-WAY WHICH DO NOT CONFLICT WITH PROPOSED CONSTRUCTION.
- TREES AND SHRUBS IN PUBLIC RIGHT-OF-WAY WHICH ARE IN DIRECT CONFLICT WITH PROPOSED NEW CONSTRUCTION SHALL BE REMOVED BY THE CONTRACTOR, WITH THE ENGINEER'S APPROVAL. TREES AND SHRUBS WHICH ARE NOT IN DIRECT CONFLICT WITH PROPOSED NEW CONSTRUCTION SHALL BE SAVED AND PROTECTED FROM DAMAGE.
- RUBBLE FROM THE REMOVAL OF MISCELLANEOUS STRUCTURES SHALL BE DISPOSED OF ON SITES TO BE PROVIDED BY THE CONTRACTOR AND APPROVED AS NOTED BELOW.

ALL DISPOSAL SITES MUST BE APPROVED BY THE KANSAS DEPARTMENT OF HEALTH AND ENVIRONMENT. MATERIAL EITHER STOCKPILED OR DISPOSED OF IN A FLOOD PLAIN WOULD REQUIRE A KANSAS STATE BOARD OF AGRICULTURE PERMIT. ANY MATERIAL DUMPED IN WATERS OF THE UNITED STATES OR WETLANDS IS SUBJECT TO U.S. CORPUS OF ENGINEERS PERMITTING REGULATIONS. ANY MATERIAL BURIED OR STOCKPILED BEYOND APPROVED CONSTRUCTION LIMITS WOULD REQUIRE ADDITIONAL ARCHEOLOGICAL INVESTIGATIONS UNLESS BURIED IN A PREVIOUSLY APPROVED BORROW LOCATION.
- CONTRACTOR SHALL SATISFY HIMSELF OF SURFACE AND SUBSURFACE CONDITIONS PRIOR TO BIDDING.
- TEMPORARY SURFACING MATERIAL (ROCK, ASPHALT, ETC.) MAY HAVE BEEN PLACED WITHIN STREET RIGHTS-OF-WAY FOR HAUL ROADS AND TEMPORARY ACCESS. CONTRACTOR SHALL FIELD VERIFY EXISTING CONDITIONS TO DETERMINE EXTENT, IF ANY, OF SUCH SURFACING. CONTRACTOR SHALL REMOVE SAID TEMPORARY SURFACING IN THE SAME MANNER AS NOTED ABOVE FOR RUBBLE. THIS REMOVAL SHALL BE SUBSIDIARY TO UNCLASSIFIED EXCAVATION.
- CONTRACTOR SHALL PROVIDE A MINIMUM SEVENTY-TWO (72) HOUR ADVANCE NOTICE (EXCLUDING WEEKENDS AND HOLIDAYS) PRIOR TO BEGINNING ANY EXCAVATION, TO KANSAS ONE-CALL SYSTEM, A UTILITY LOCATION SERVICE, AT (316) 687-2470 TO REQUEST THE FOLLOWING UTILITY COMPANIES TO LOCATE ALL EXISTING LINES WITHIN THE PROJECT AREA: K.G.S. GAS, WESTAR ENERGY, SBC, COX COMMUNICATIONS, CITY OF WICHITA SEWER MAINTENANCE AND CITY OF WICHITA WATER DEPARTMENT.
- THE CONTRACTOR SHALL BE RESPONSIBLE FOR PRESERVING PROPERTY IRONS. THE CONTRACTOR WILL BE REQUIRED TO RE-ESTABLISH ANY PROPERTY IRONS WHICH ARE DAMAGED OR DESTROYED BY HIS CONSTRUCTION OPERATIONS. SUCH IRONS SHALL BE RE-ESTABLISHED BY A LICENSED LAND SURVEYOR IN ACCORDANCE WITH STATE LAWS.
- THE WATER DEPARTMENT SHALL FIELD LOCATE WATER VALVES ONE TIME DURING CONSTRUCTION WHEN REQUESTED BY THE CONTRACTOR. IT SHALL BE THE CONTRACTOR'S RESPONSIBILITY TO PRESERVE SUCH FIELD LOCATIONS DURING THE CONSTRUCTION PROCESS. WATER VALVES, WATER VALVE BOXES OR FIRE HYDRANTS DAMAGED DURING CONSTRUCTION SHALL BE REPAIRED BY THE CONTRACTOR AT HIS OWN EXPENSE.
- CONTRACTOR SHALL MAKE SATISFACTORY PROVISIONS FOR MAIL DELIVERY TO PROPERTIES ADJACENT TO CONSTRUCTION. MAILBOXES SHALL BE REMOVED, RESET, AND ADJUSTED AS NECESSARY ACCORDING TO U.S. POSTAL SERVICE REQUIREMENTS. TEMPORARY MAILBOXES SHALL BE SET AT A CONVENIENT LOCATION ACCESSIBLE TO THE MAIL CARRIER'S VEHICLE AND APPROVED BY THE ENGINEER. CONTRACTOR SHALL MAINTAIN ALL MAILBOXES IN AN UPRIGHT POSITION AND REPAIR ANY MAILBOXES OR THEIR SUPPORTS WHICH ARE DAMAGED DURING CONSTRUCTION. THE WORK SHALL BE INCLUDED IN THE BID ITEM "SITE PREPARATION AND RESTORATION".
- THE CONTRACTOR SHALL ADJUST WATER VALVE BOXES AS DIRECTED BY THE ENGINEER. THIS WORK TO BE SUBSIDIARY TO OTHER BID ITEMS.
- THE CONTRACTOR SHALL RESTORE ALL GRASSED AREAS DISTURBED BY CONSTRUCTION IN ACCORDANCE WITH SECTION 900 OF THE STANDARD SPECIFICATIONS.
- CONTRACTOR SHALL MAINTAIN TWO-WAY TRAFFIC ON 37TH STREET NORTH AT ALL TIMES. CONTRACTOR SHALL BE RESPONSIBLE TO PROVIDE, ERECT AND MAINTAIN ADEQUATE TRAFFIC CONTROL DEVICES IN ACCORDANCE WITH THE "MANUAL ON UNIFORM TRAFFIC CONTROL DEVICES" (MUTCD) AS SPECIFIED IN THE "WORK ZONE TRAFFIC CONTROL" SECTION OF THE CITY OF WICHITA STANDARD SPECIFICATIONS.
- EROSION CONTROL (BMP'S)
THE CONTRACTOR SHALL INSTALL AND/OR MAINTAIN EROSION CONTROL METHODS AS SPECIFIED IN THE PLANS. THE FOLLOWING QUANTITIES ARE ESTIMATED, AND SHOULD BE CONSIDERED THE MINIMUM EFFORT REQUIRED. INSTALLATION OF THESE BMP'S DOES NOT RELIEVE THE CONTRACTOR OF THE RESPONSIBILITY OF ABATING SOIL EROSION.

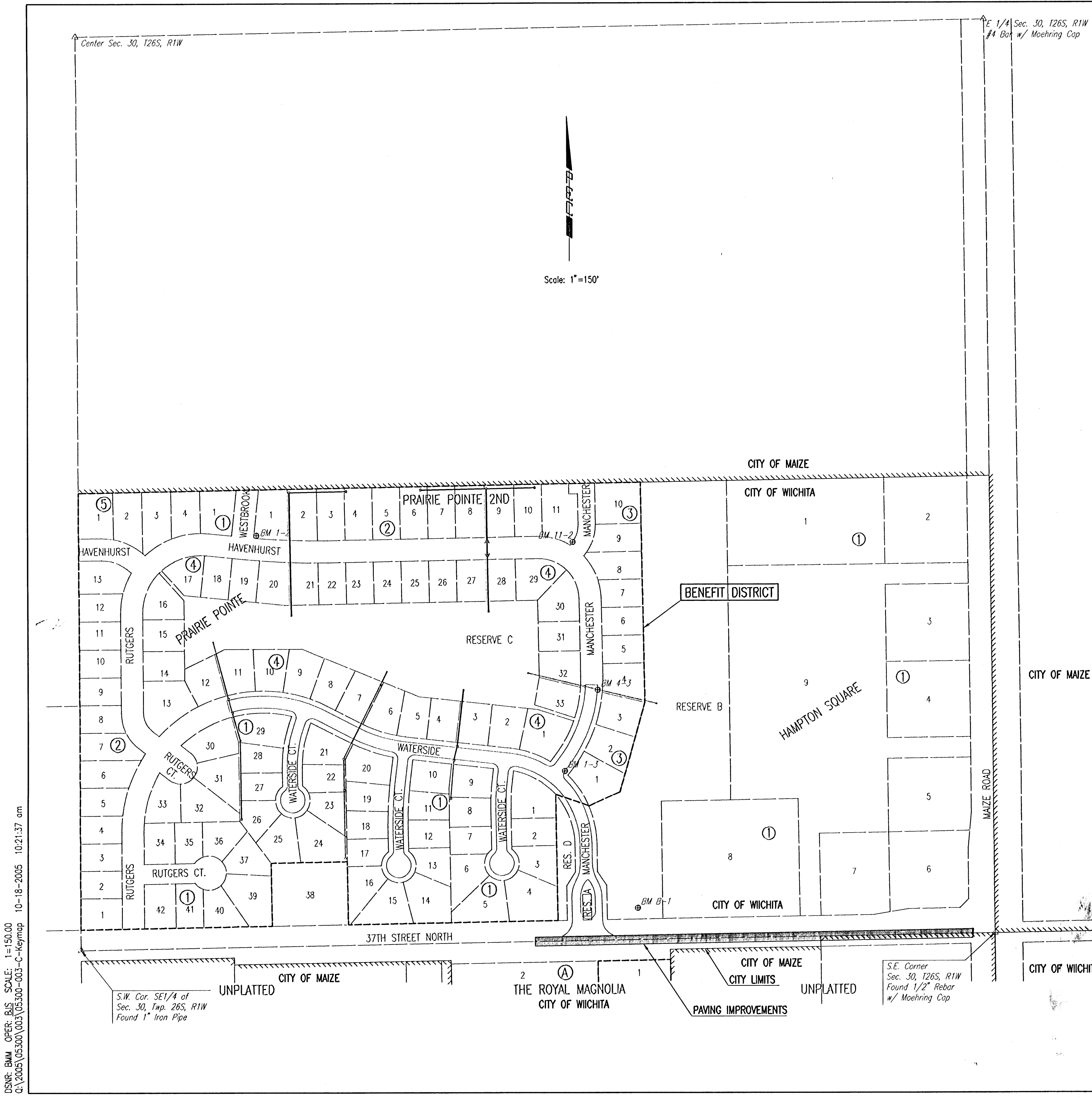
SILT FENCE DITCH CHECKS 32 L.F.

BENCHMARKS

- BM B-1 - CHISELED "d" IN WEST END OF CONCRETE HEADWALL ±93' NORTH OF CENTERLINE OF 37TH STREET AND ±139' EAST OF CENTERLINE OF MANCHESTER, SOUTH END OF POND. ELEV. = 168.12
- BM 1-3 - CHISELED "d" IN TOP OF CURB, NORTH CURB RETURN AT NORTHEAST CORNER OF MANCHESTER AND WATERSIDE. ELEV. = 174.88
- BM 4-3 - CHISELED "d" IN TOP OF FRONT CURB IN CENTER OF INLET ON EAST SIDE OF MANCHESTER NEAR SOUTHWEST CORNER OF LOT 4, BLOCK 3, PRAIRIE POINTE. ELEV. = 173.12
- BM 11-2 - "T" POST ±0.5' BELOW GRADE AND 10' NORTH OF THE SOUTH CORNER OF LOT 11, BLOCK 2, PRAIRIE POINTE 2ND ADDITION. ELEV. = 172.655
- BM 1-2 - "T" POST ±0.5' BELOW GRADE AND 10' NORTHEAST OF THE SOUTHWEST CORNER OF LOT 1, BLOCK 2, PRAIRIE POINTE 2ND ADDITION. ELEV. = 172.665



No.	Revision	By	Date
	37TH STREET ASPHALT MAT PAVING		
KEY MAP AND GENERAL NOTES			
JAMES L. ARMOUR, P.E. - CITY ENGINEER CITY OF WICHITA PROJECT NO. 472-84044			
Professional Engineering Consultants, P.A.			
303 S. TOPEKA - WICHITA, KANSAS 67202 316-262-2691 • FAX 316-262-3003			
Designed by	BDB, BLB	Job No.	35-05300-003
Drawn by	BMM, BJS	Date	June 2005
			Sheet 2 of 16



DSNR: BMM OPER: BJS SCALE: 1"=150.00
 Q:\2005\05300\003\05300-003-C-keymap 10-21-05 10:21:37 am