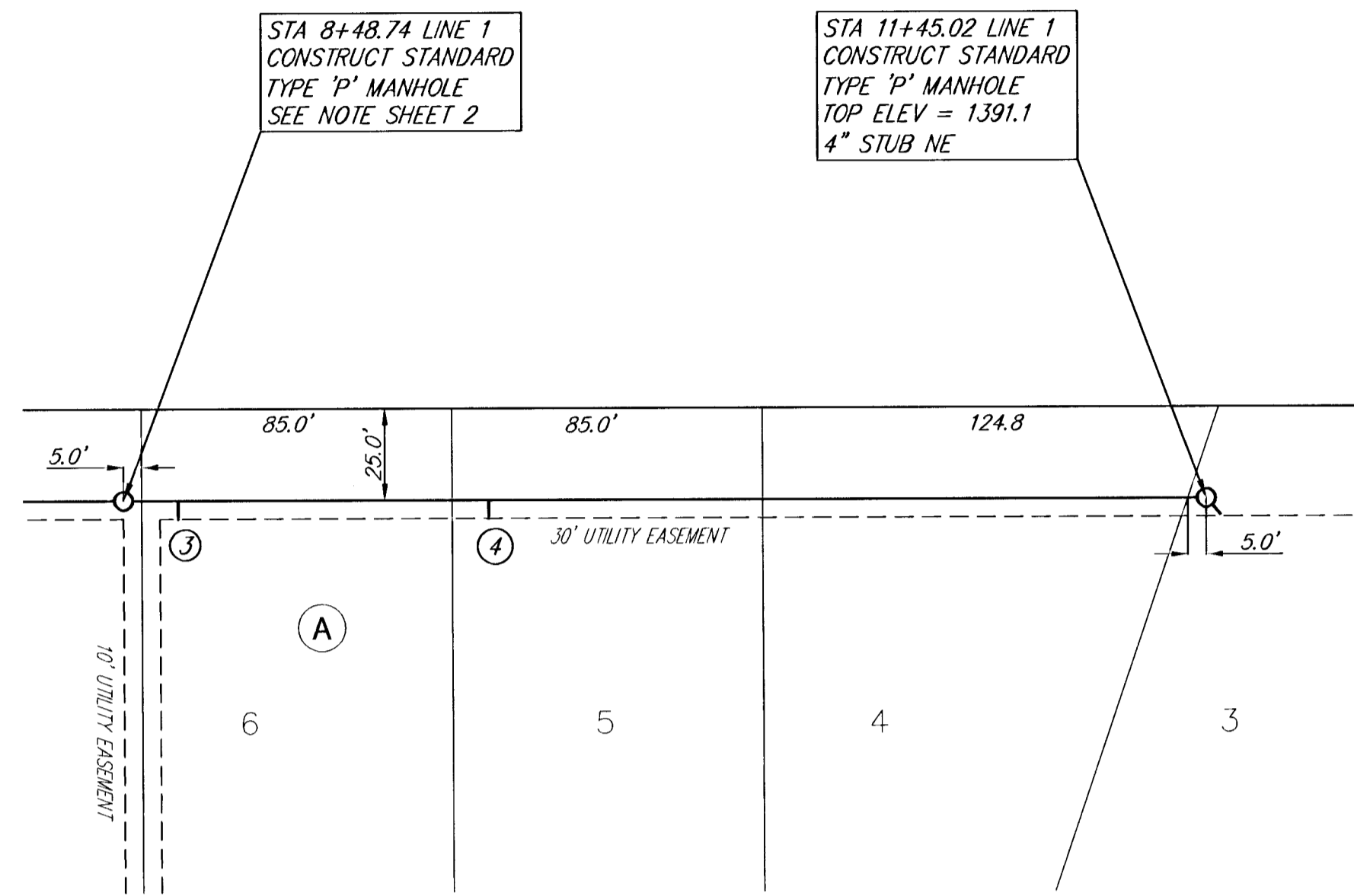


Sedgwick County East Yard Add.



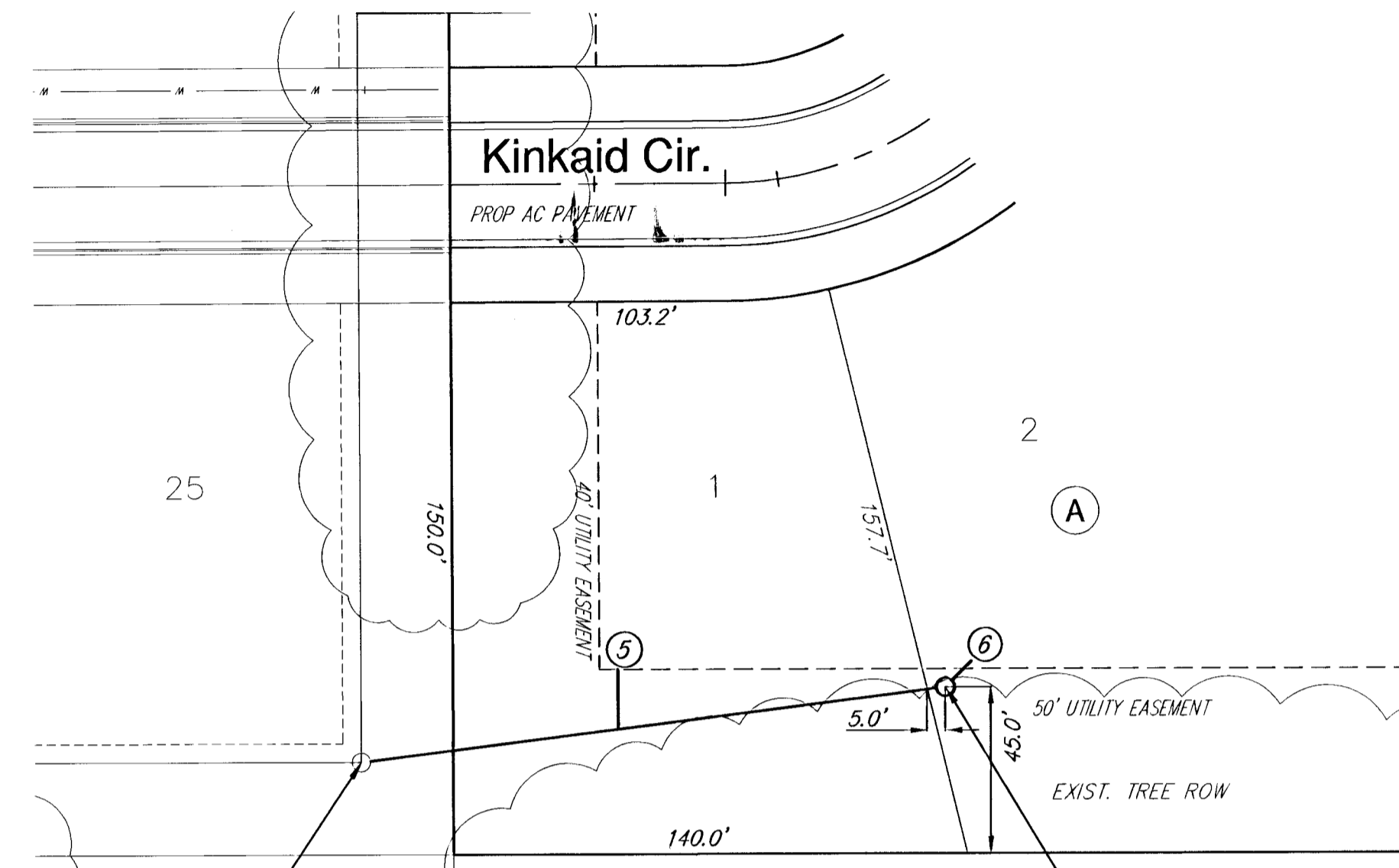
Brentwood South 2nd Add.



SCALE: Plan 1" = 40'  
Profile 1" = 40' (Horiz.)  
1" = 5' (Vert.)

Brentwood South 2nd Add.

Brentwood South Add



Christ Community Church Add.

SEWER SERVICE TABLE

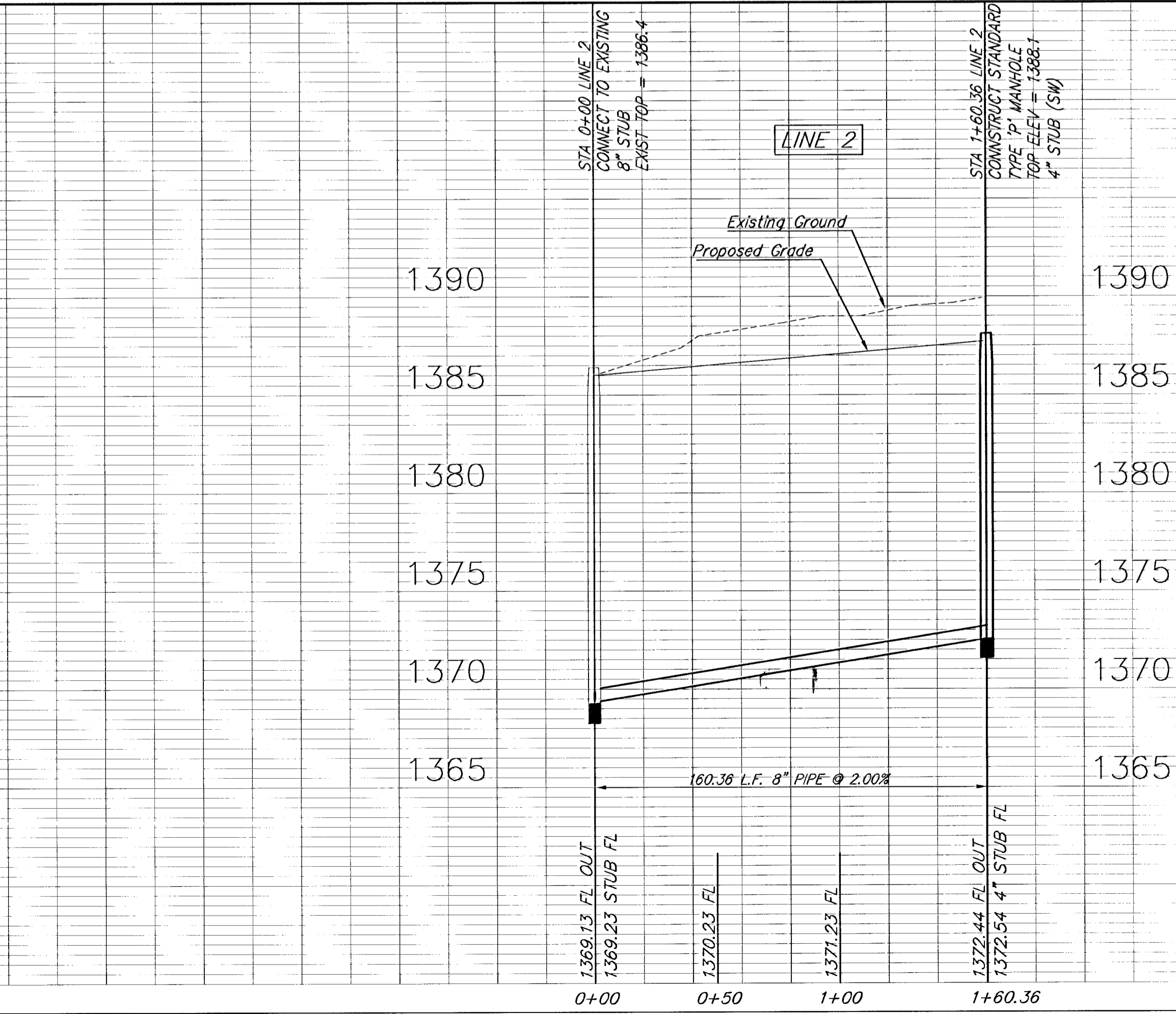
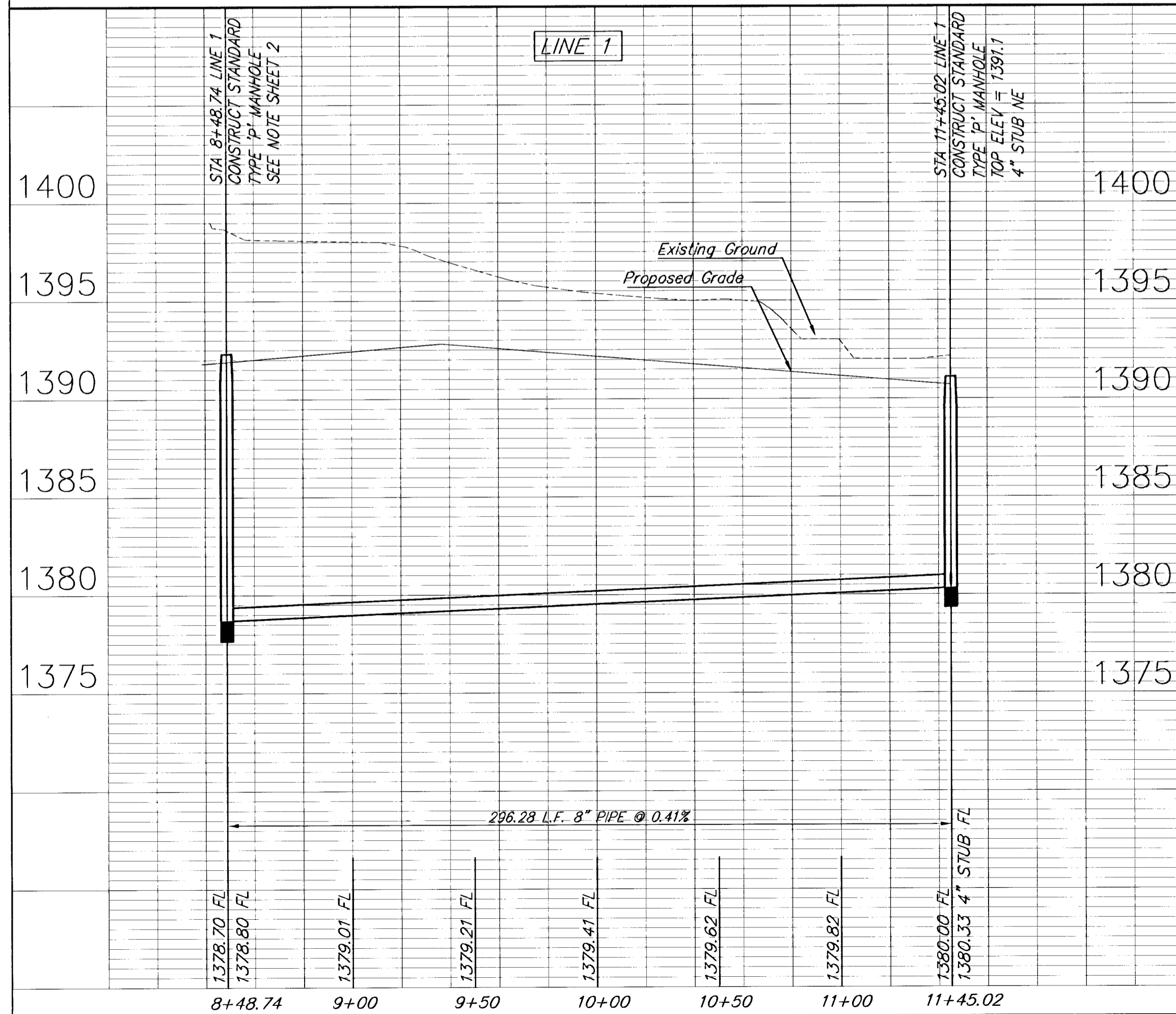
NUMBER	TYPE	LOCATION			FOR INFORMATION ONLY		
		LOT NO.	BLOCK NO.	LINE NO.	STATION \ DIRECTION	APPROXIMATE LENGTH 4" PIPE	VERTICAL
3	8" X 4" Inline Wye	6	A	1	8+67.74/E 04	11'	5'6"
4	8" X 4" Inline Wye	5	A	1	9+48.74/E 49	11'	5'
5	8" X 4" Inline Wye	1	A	2	0+70.5/S	11'	5'18"
6	4" MANHOLE	2	A	2	1+60.36/S	11'	MH Stub +0'

NOTE: Vertical Riser Pipe shall be extended to 2' minimum above ground water elevation and 4' maximum below proposed ground elevation.



SCALE: Plan 1" = 40'  
Profile 1" = 40' (Horiz.)  
1" = 5' (Vert.)

TRIM OR REMOVE TREES ONLY AS NECESSARY FOR CONSTRUCTION COST SUBSIDIARY TO BID THEM FOR SITE CLEARING AND RESTORATION



<p>PROJECT NUMBER 468-83802</p> <p>DESIGN CMB</p> <p>DRAWN EJC</p> <p>DATE July 13, 2004</p>	<p>REVIEW UTILITY</p> <p>REVIEW DATE</p> <p>REVIEW DATE</p>
<p>BRENTWOOD SOUTH 2ND ADDITION SANITARY SEWER WICHITA, KANSAS</p>	
<p><b>Ruggles &amp; Bohm, P.A.</b> Engineering, Surveying, Land Planning</p> <p>924 North Main Wichita, Kansas 67203 www.rtkansas.com</p> <p>(316) 264-8008 (316) 264-4621 fax E-mail: info@rtkansas.com</p>	
<p>RB JOB 2585E SHEET 3 OF 13</p>	