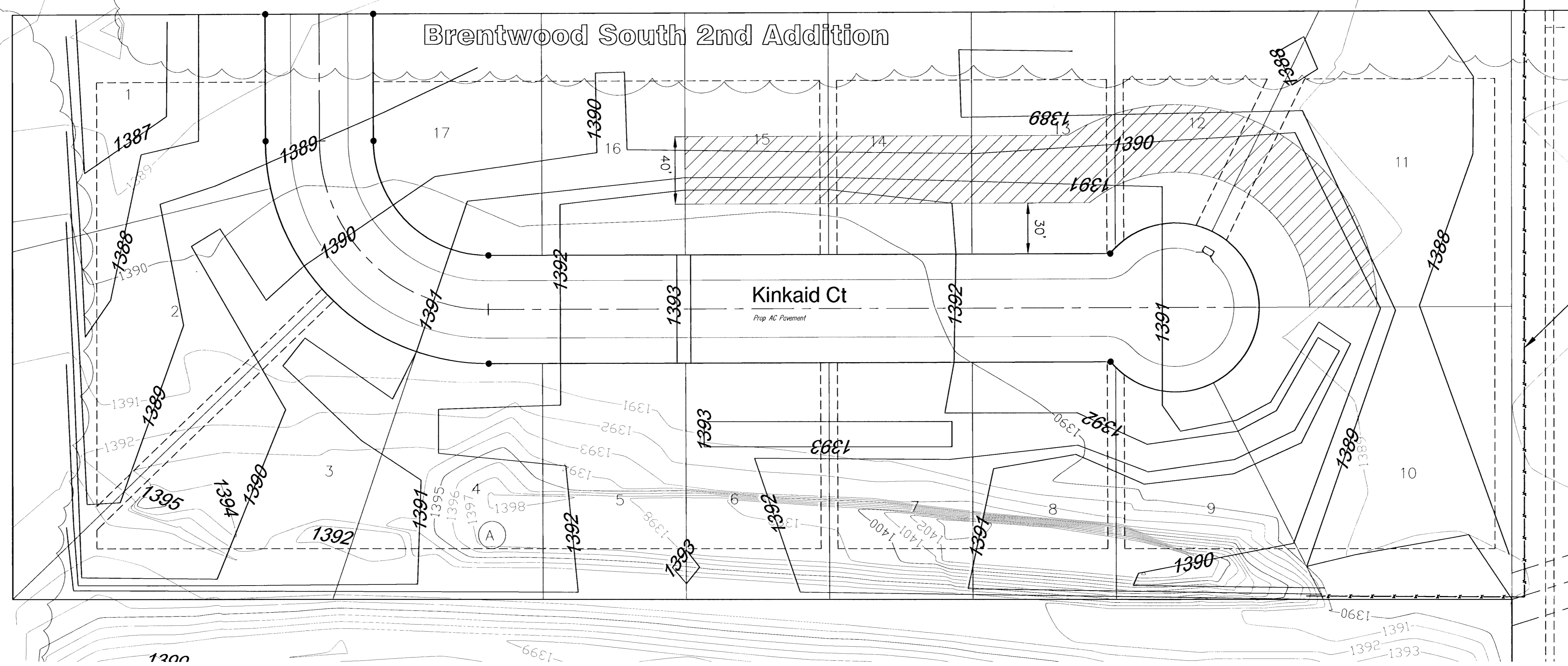


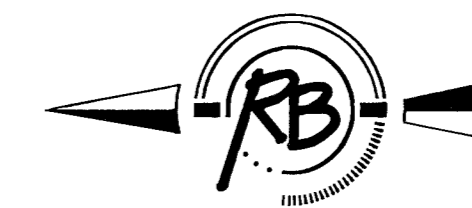
Christ Community Church Add.

Brentwood South Addition

Brentwood South 2nd Addition



Sedgwick County East Yard Add.



SCALE 1" = 40'
IRON = •

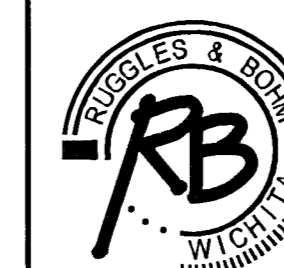
CUT	11400 SQ YDS
FILL	6380 SQ YDS
NET	5060 SQ YDS CUT

ALL FILL IN STREET RIGHT OF WAY SHALL BE
COMPACTED TO 90% STANDARD DENSITY.
COMPACTED FILL VOLUME = 2500 CUBIC YARDS

WASTE EXCESS FILL IN SHADED AREA
UP TO 2.0' DEEP.

TREES IN CONFLICT WITH CONSTRUCTION SHALL
BE REMOVED AT ENGINEER'S DIRECTION.
INCIDENTAL TO SITE CLEARING.

Brentwood South 2nd Addition
Site Grading
WICHITA, KANSAS



Ruggles & Bohm, F.A.
Engineering, Surveying, Land Planning
924 North Main (318) 264-8008
Wichita, Kansas 67203 (318) 264-4621 fax
www.rbkansas.com E-mail: info@rbkansas.com

DRAWING FILE	PROJECT NUMBER	DATE
Earthwork [Site Grading Contours]	468-83802	July 13, 2004

DESIGN	CMB	SHEET 5 OF 13
DRAWN	EJG	
REVIEW		
UTILITY		
DATE	July 13, 2004	