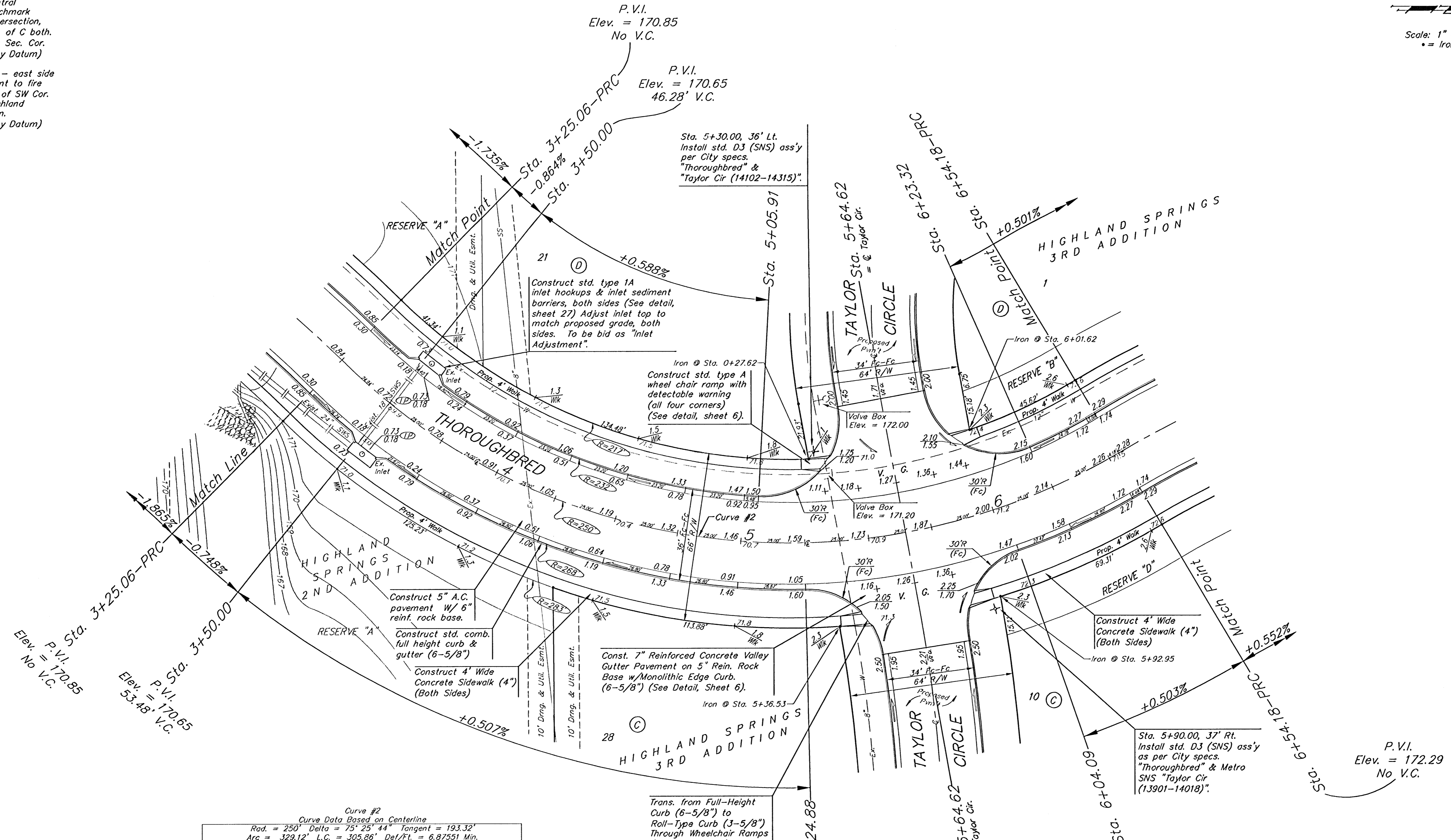
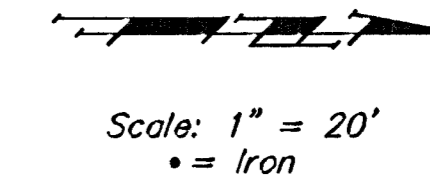


Benchmarks:

135th St. W. & Central
City of Wichita Benchmark
DISC - NE Cor. Intersection,
32.6' N. & 24.5' E. of C. both
39.5' NE of Iron at Sec. Cor.
Elev. = 159.50 (City Datum)

Brass disc in curb - east side
of Aksarben adjacent to fire
hydrant 5± South of SW Cor.
Lot 8, Block A, Highland
Springs 3rd Addition.
Elev. = 170.00 (City Datum)



Curve #2
Curve Data Based on Centerline
Rad. = 250' Delta = 75° 25' 44" Tangent = 193.32'
Arc = 329.12' L.C. = 305.86' Del./Ft. = 6.87551 Min.

Station	Arc	FACE CHORD LENGTHS		Defl.	T. Defl.
		8' Lt.	8' Rt.		
3+25.06	-	-	-	0°00'00"	0°00'00"
3+50.00	24.94'	22.34'	27.52'	2°51'29"	2°51'29"
3+75.00	25.00'	22.39'	27.59'	2°51'53"	5°43'22"
4+00.00	25.00'	22.39'	27.59'	2°51'53"	8°35'15"
4+25.00	25.00'	22.39'	27.59'	2°51'53"	11°27'08"
4+50.00	25.00'	22.39'	27.59'	2°51'53"	14°19'02"
4+75.00	25.00'	22.39'	27.59'	2°51'53"	17°10'55"
5+00.00	25.00'	22.39'	27.59'	2°51'53"	20°02'48"
5+05.91	5.91'	5.30'	6.52'	0°40'38"	20°43'26"
5+24.88	18.97'	16.99'	20.94'	2°10'26"	22°53'52"
5+64.62	39.74'	35.57'	43.83'	4°33'14"	27°27'06"
6+04.09	39.47'	35.33'	43.53'	4°31'22"	31°58'28"
6+23.32	19.23'	17.23'	21.22'	2°12'13"	34°10'41"
6+25.00	1.68'	1.51'	1.85'	0°11'33"	34°22'14"
6+50.00	25.00'	22.39'	27.59'	2°51'54"	37°14'08"
6+54.18	4.18'	3.75'	4.61'	0°28'44"	37°42'52"

Trans. from Full-Height
Curb (6-5/8") to
Roll-Type Curb (3-5/8")
Through Wheelchair Ramps
(all four corners)

	Highland Springs 3rd Addition - Phase II	
	THOROUGHbred STA. 3+25.06 TO STA. 6+54.18	
Baughman Company, P.A. 315 E. 15th St. Wichita, KS 67211 P 316-263-7171 F 316-263-1499 ENGINEERING SURVEYING PLANNING LANDSCAPE ARCHITECTURE		
PROJECT NUMBER 472-83179	DESIGN NBW	DRAWN TMS/JAK
REVISIONS	APPROVED	DATE 4/21/05
	SCALE Noted	SHEET
	9 OF 39	
Highland Springs 3rd Phase 2/Ser2.dwg		04-06-E927