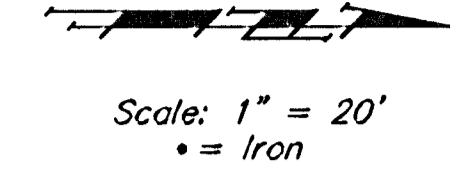


Benchmarks:

135th St. W. & Central
City of Wichita Benchmark
DISC - NE Cor. Intersection,
32.6' N. & 24.5' E. of C both
39.5' NE of Iron at Sec. Cor.
Elev. = 159.50 (City Datum)

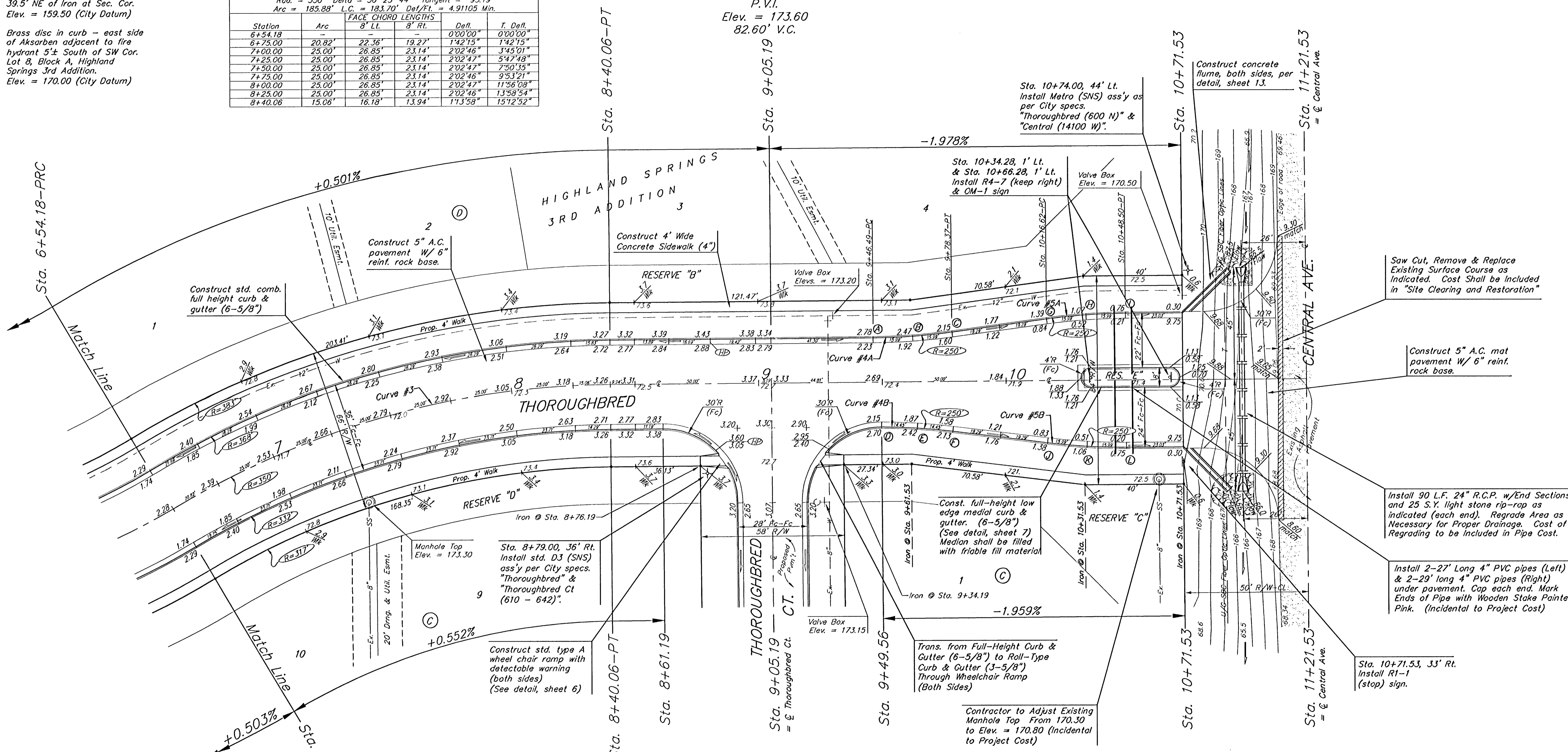
Brass disc in curb - east side of
Aksarben adjacent to fire
hydrant 5± South of SW Cor.
Lot 8, Block A, Highland
Springs 3rd Addition.
Elev. = 170.00 (City Datum)



Curve #3
Curve Data Based on Centerline
Rad. = 350' Delta = 30° 25' 44" Tangent = 95.19'
Arc = 185.88' L.C. = 183.70' Def/Ft. = 4.91105 Min.

Station	Arc	FACE CHORD LENGTHS		Defl.	T. Defl.
		8' Lt.	8' Rt.		
6+54.18	-	-	-	0'00"00"	0'00"00"
6+75.00	20.82'	22.36'	19.27'	1'42"15"	1'42"15"
7+00.00	25.00'	26.85'	23.14'	2'02"46"	3'45"01"
7+25.00	25.00'	26.85'	23.14'	2'02"46"	5'47"48"
7+50.00	25.00'	26.85'	23.14'	2'02"46"	7'50"35"
7+75.00	25.00'	26.85'	23.14'	2'02"46"	9'53"21"
8+00.00	25.00'	26.85'	23.14'	2'02"46"	11'56"08"
8+25.00	25.00'	26.85'	23.14'	2'02"46"	13'58'54"
8+40.06	15.06'	16.18'	13.94'	1'13'58"	15'12'52"

P.V.I.
Elev. = 173.60
82.60' V.C.



Curve #4A
Curve Data Based on Centerline
Rad. = 250' Delta = 7° 19' 35" Tangent = 16.01'
Arc = 31.98' L.C. = 31.95' Def/Ft. = 6.87279 Min.

Station	Arc	FACE CHORD LENGTHS		Defl.	T. Defl.
		8' Lt.	8' Rt.		
A	15.99'	15.47'	15.47'	0'00"00"	0'00"00"
B	15.99'	15.47'	14'9"54"	1'49'54"	1'49'54"
C	15.99'	15.47'	14'9"54"	1'49'54"	3'39'48"

Curve #5A
Curve Data Based on Centerline
Rad. = 250' Delta = 7° 19' 35" Tangent = 16.01'
Arc = 31.98' L.C. = 31.95' Def/Ft. = 6.87279 Min.

Station	Arc	FACE CHORD LENGTHS		Defl.	T. Defl.
		8' Lt.	8' Rt.		
G	-	-	-	0'00"00"	0'00"00"
H	15.99'	16.49'	16.49'	1'49'54"	1'49'54"
I	15.99'	16.49'	16.49'	1'49'54"	3'39'48"

Curve #4B
Curve Data Based on Centerline
Rad. = 250' Delta = 6° 34' 23" Tangent = 14.36'
Arc = 28.90' L.C. = 28.66' Def/Ft. = 6.82324 Min.

Station	Arc	FACE CHORD LENGTHS		Defl.	T. Defl.
		8' Lt.	8' Rt.		
D	-	-	-	0'00"00"	0'00"00"
E	14.45'	13.88'	13.88'	1'38'36"	1'38'36"
F	14.45'	13.88'	13.88'	1'38'36"	3'17'12"

Curve #5B
Curve Data Based on Centerline
Rad. = 250' Delta = 7° 19' 35" Tangent = 16.01'
Arc = 31.98' L.C. = 31.95' Def/Ft. = 6.87279 Min.

Station	Arc	FACE CHORD LENGTHS		Defl.	T. Defl.
		8' Lt.	8' Rt.		
J	-	-	-	0'00"00"	0'00"00"
K	15.99'	16.49'	16.49'	1'49'54"	1'49'54"
L	15.99'	16.49'	16.49'	1'49'54"	3'39'48"

P.V.I.
Elev. = 172.29
No V.C.

Baughman Highland Springs 3rd Addition - Phase II
THOROUGHBRED
STA 6+54.18 TO STA 11+21.53

PROJECT NUMBER: 47283719
DESIGN: NBW
DRAWN: TMS/JAK
APPROVED: DATE: 4/21/05

REVISIONS:

SCALE: Noted
SHEET: 10 OF 39

Highland Springs 3rd/Phase 2/Std.dwg 04-06E97