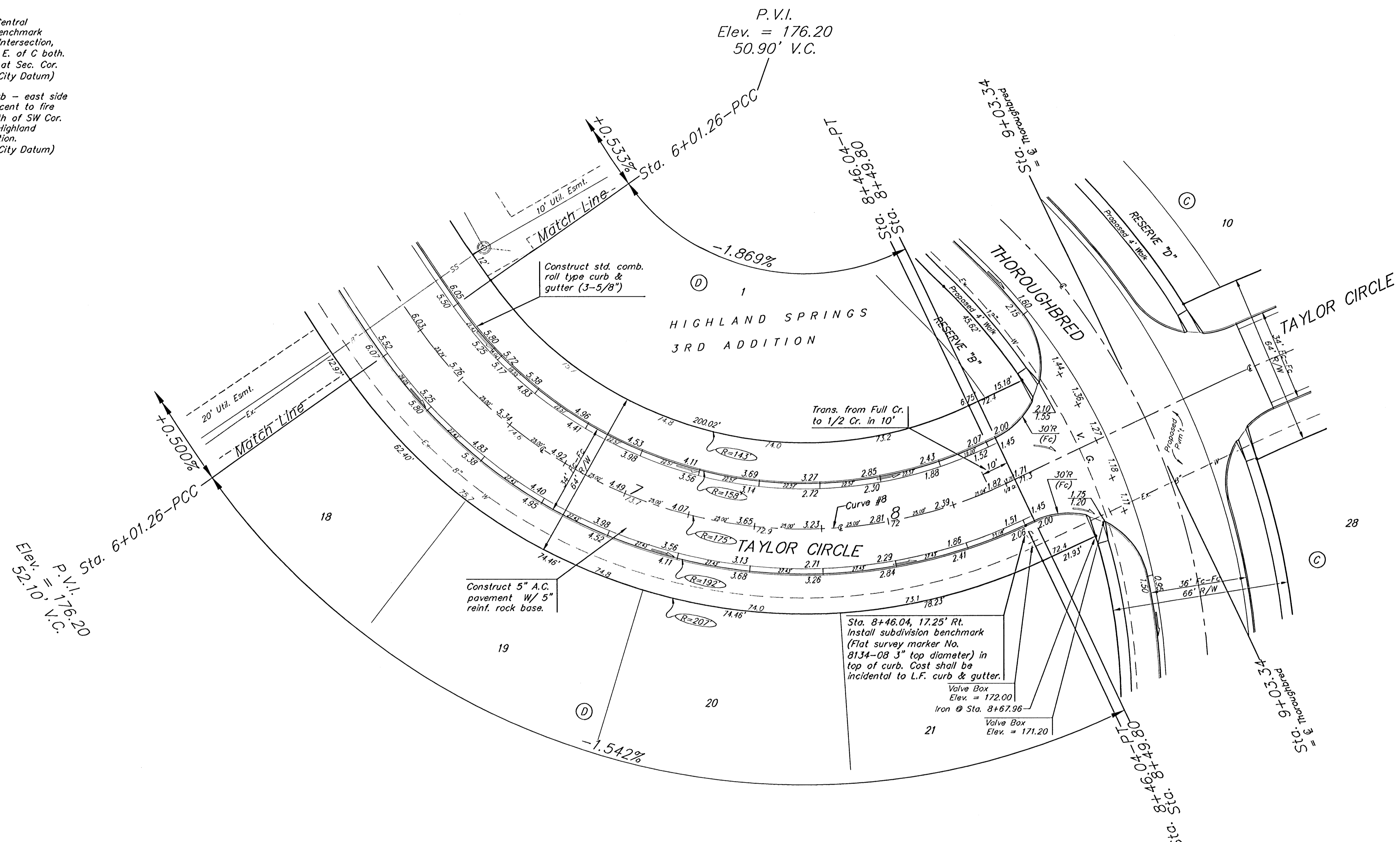
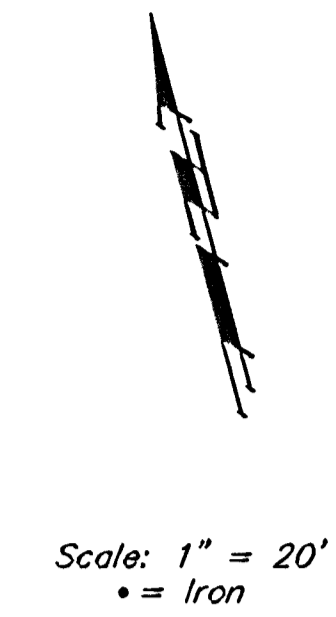


Benchmarks:

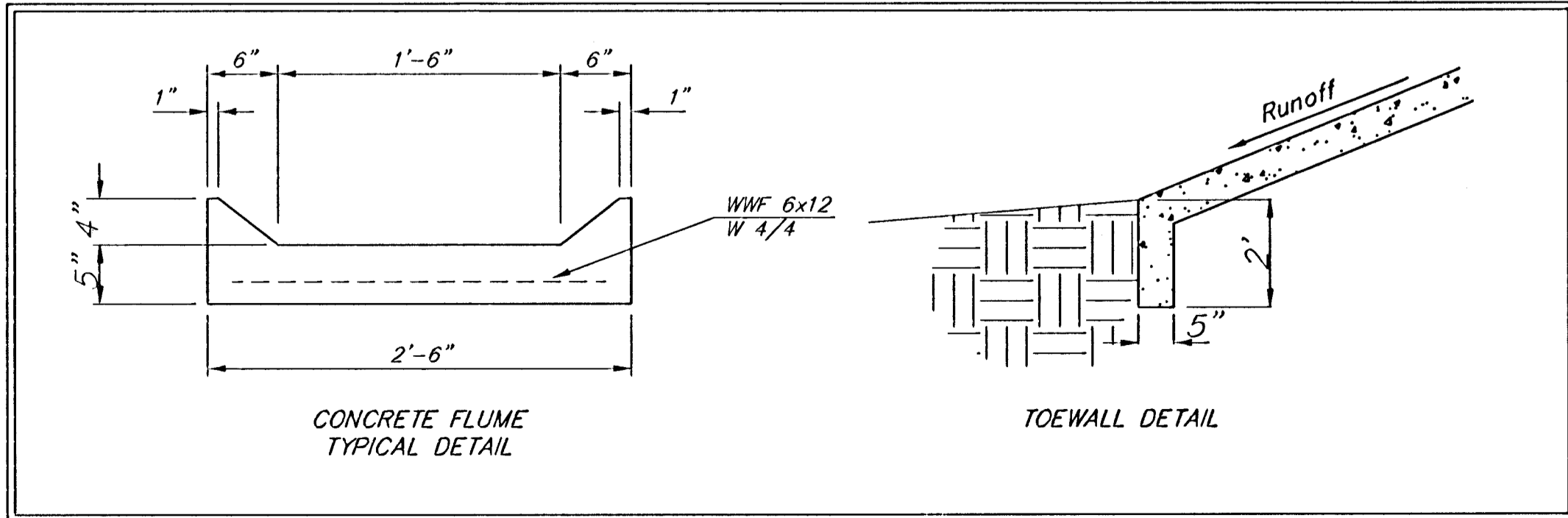
135th St. W. & Central
City of Wichita Benchmark
DISC - NE Cor. Intersection,
32.6' N. & 24.5' E. of C both.
39.5' NE of Iron at Sec. Cor.
Elev. = 159.50 (City Datum)

Brass disc in curb - east side
of Aksarben adjacent to fire
hydrant 5± South of SW Cor.
Lot 8, Block A, Highland
Springs 3rd Addition.
Elev. = 170.00 (City Datum)



Curve #8
Curve Data Based on Centerline
Rad. = 175' Delta = 80°08'34" Tangent = 147.21'
Arc = 244.78' L.C. = 225.31' Def/Flt. = 9.82222 Min.

Station	Arc	FACE CHORD LENGTHS		Defl.	T. Defl.
		8" Lt.	8" Rt.		
6+01.26	23.74'	20.33'	27.11'	0°00'00"	0°00'00"
6+25.00	25.00'	21.41'	28.55'	3°31'11"	3°31'11"
6+50.00	25.00'	21.41'	28.55'	4°05'33"	7°58'44"
6+75.00	25.00'	21.41'	28.55'	4°05'33"	12°04'17"
7+00.00	25.00'	21.41'	28.55'	4°05'33"	16°09'51"
7+25.00	25.00'	21.41'	28.55'	4°05'33"	20°15'24"
7+50.00	25.00'	21.41'	28.55'	4°05'33"	24°20'57"
7+75.00	25.00'	21.41'	28.55'	4°05'33"	28°26'31"
8+00.00	25.00'	21.41'	28.55'	4°05'33"	32°32'04"
8+25.00	25.00'	21.41'	28.55'	4°05'33"	36°37'37"
8+46.04	21.04'	18.02'	24.03'	3°26'40"	40°44'17"



NOTE: ROLL TYPE CURB & GUTTER TO BE CONSTRUCTED ON THE PAVEMENT SHOWN ON THIS SHEET. TOP OF CURB ELEVATIONS ARE GIVEN FOR FULL HEIGHT CURB.

Baughman Highland Springs 3rd Addition - Phase II
TAYLOR CIRCLE
STA 6+01.26 TO STA 9+03.34

PROJECT NUMBER: 412-83179
DESIGN: NBW
DRAWN: TMS/JAK
APPROVED: [Signature]
DATE: 4/20/05

SCALE: Noted
SHEET: 13 OF 39

Highland Springs 3rd Phase 2/Std.dwg 04-06-E927