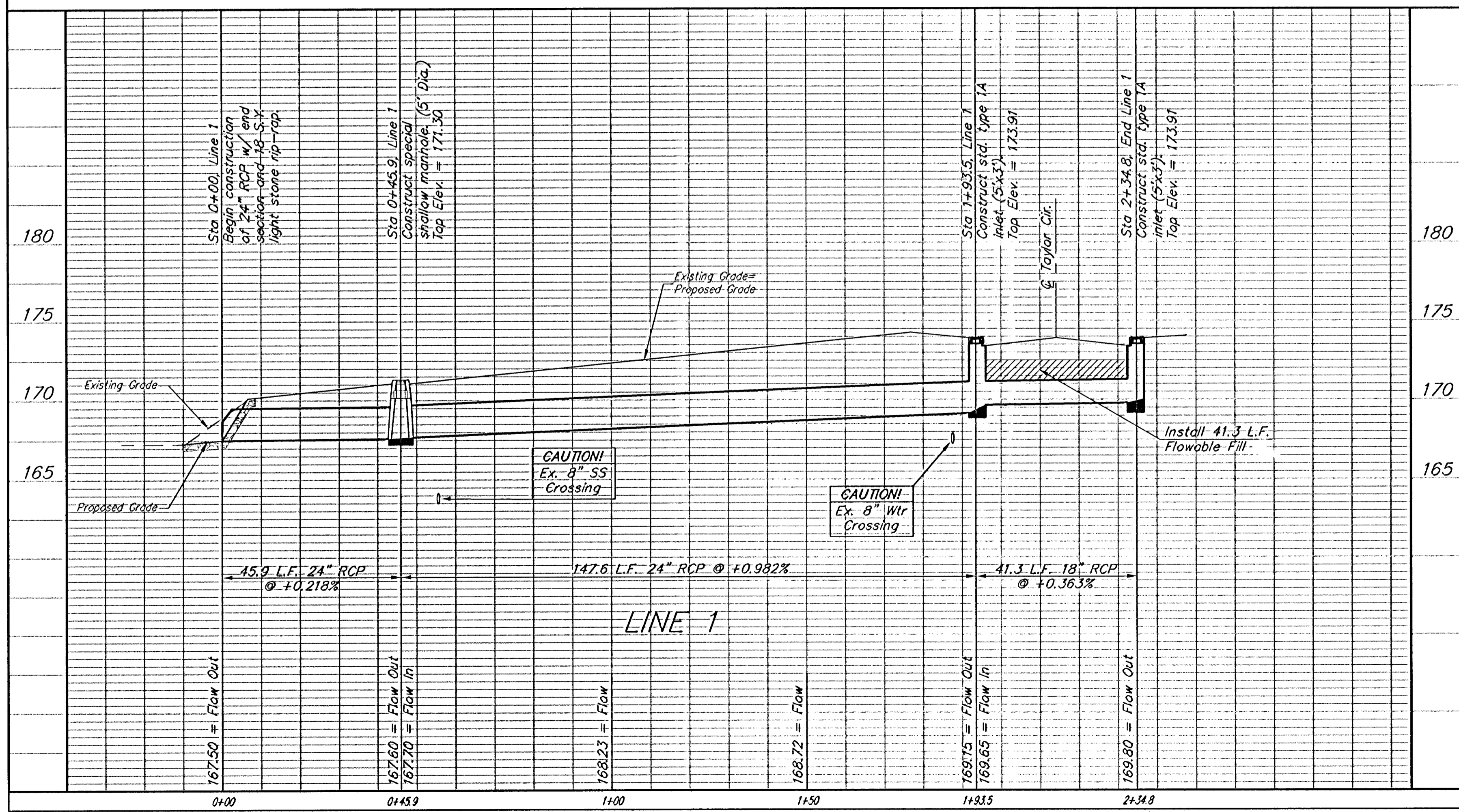
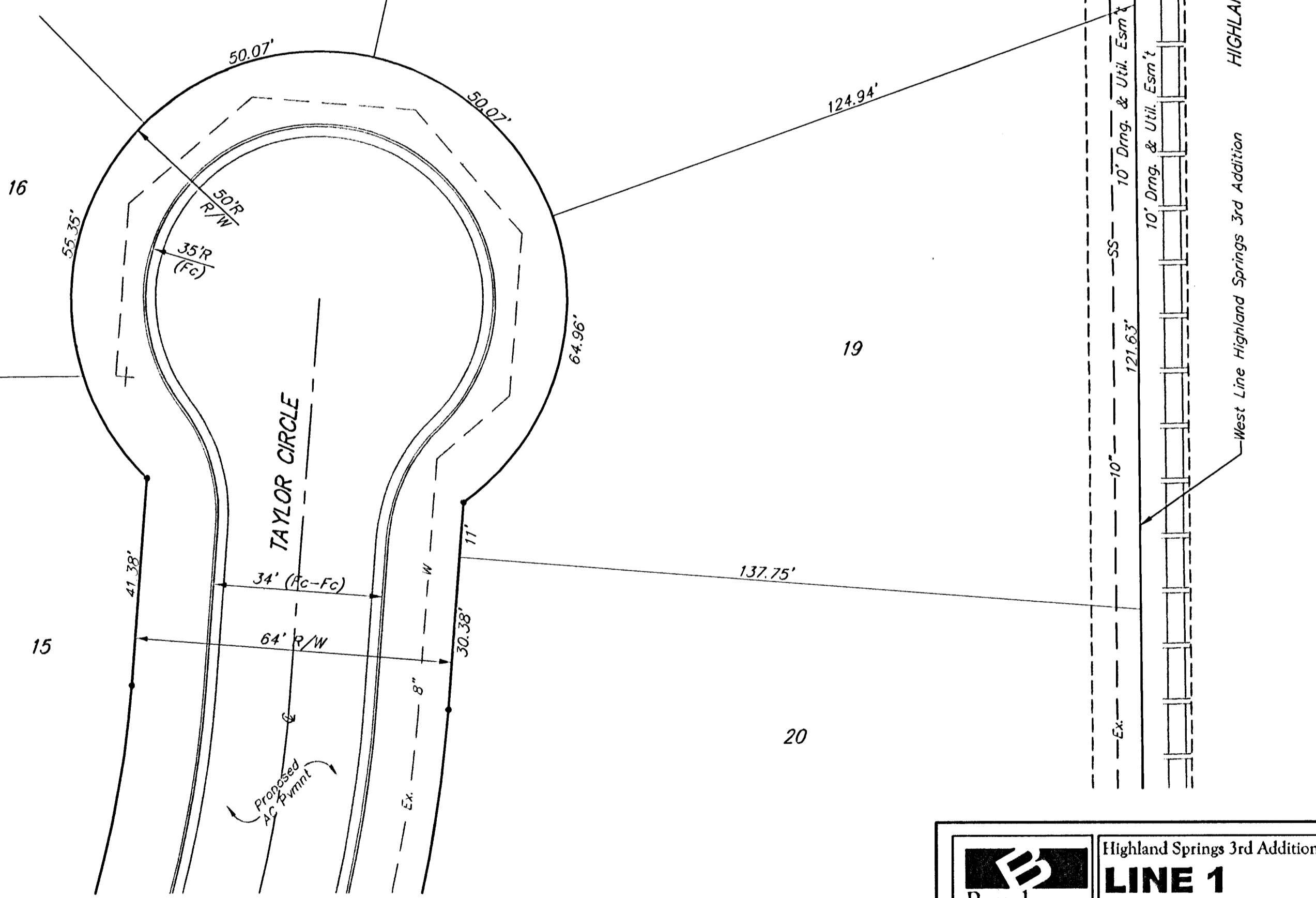
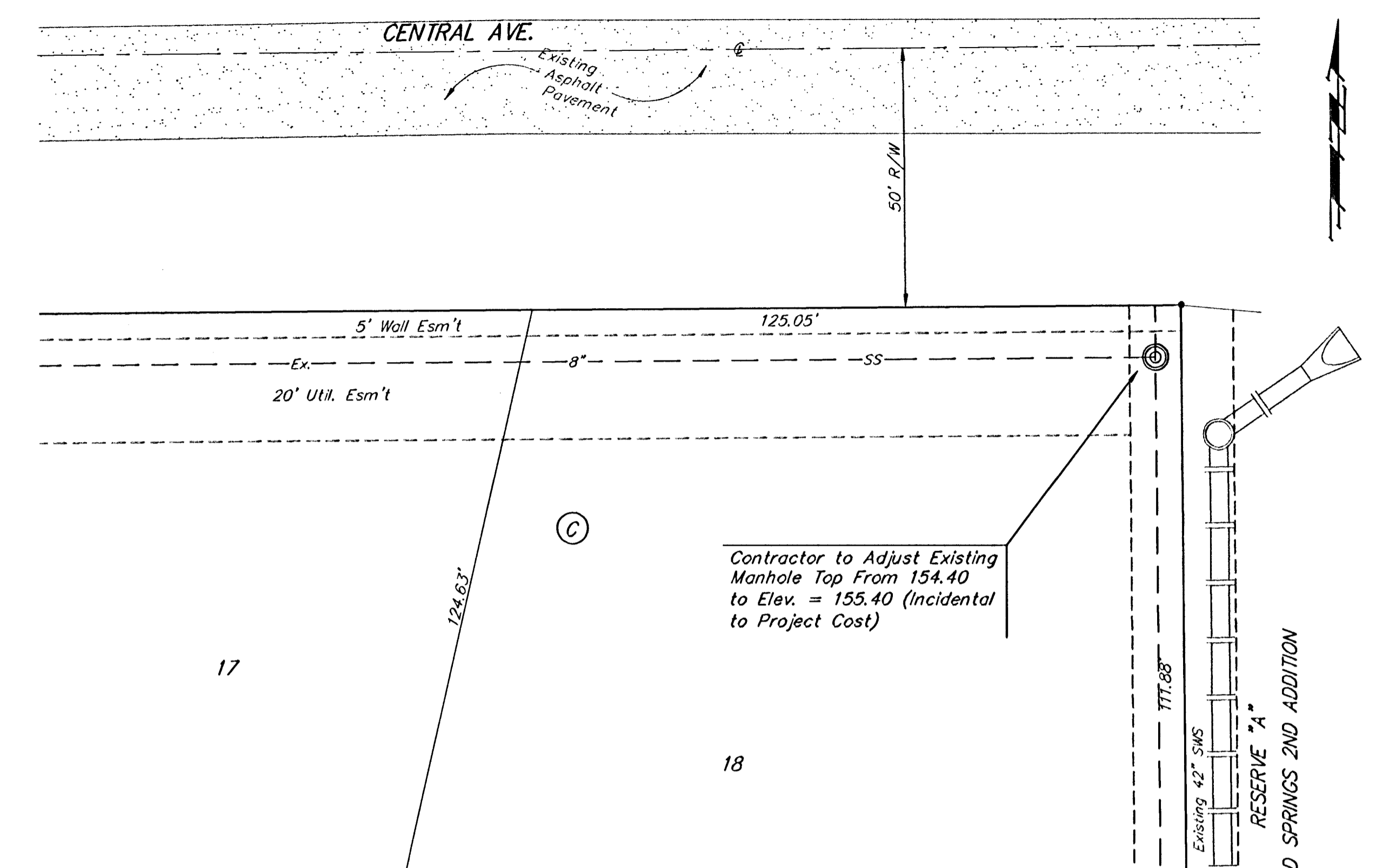
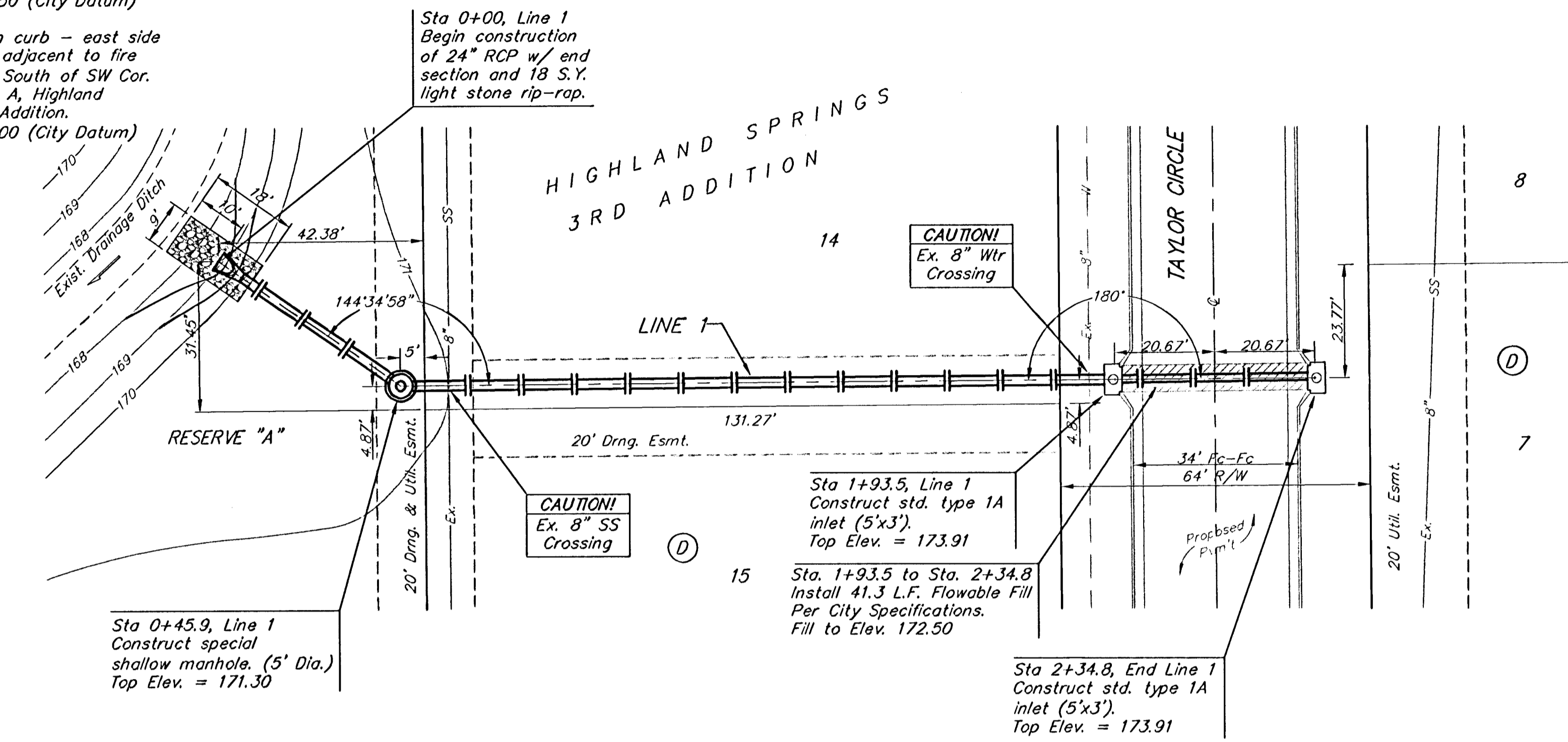
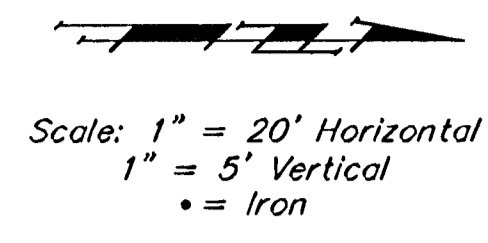


Benchmarks:

135th St. W. & Central
City of Wichita Benchmark
DISC - NE Cor. Intersection,
32.6' N. & 24.5' E. of C both
39.5' NE of Iron at Sec. Cor.
Elev. = 159.50 (City Datum)

Brass disc in curb - east side
of Aksarben adjacent to fire
hydrant 5'± South of SW Cor.
Lot 8, Block A, Highland
Springs 3rd Addition.
Elev. = 170.00 (City Datum)



		Highland Springs 3rd Addition - Phase II	
		LINE 1	
Storm Water Sewer Improvements		Baughman Company, P.A. 315 Ellis St. Wichita, KS 67211 P 316-262-7271 F 316-262-0149 ENGINEERING SURVEYING PLANNING LANDSCAPE ARCHITECTURE	
PROJECT NUMBER	DESIGN	DRAWN	
	NBW	TMS/JAK	
REVISIONS	APPROVED	DATE	4/20/05
		SCALE	Noted
		SHEET	17 OF 39
HSprings3/SWS1		0406E927	