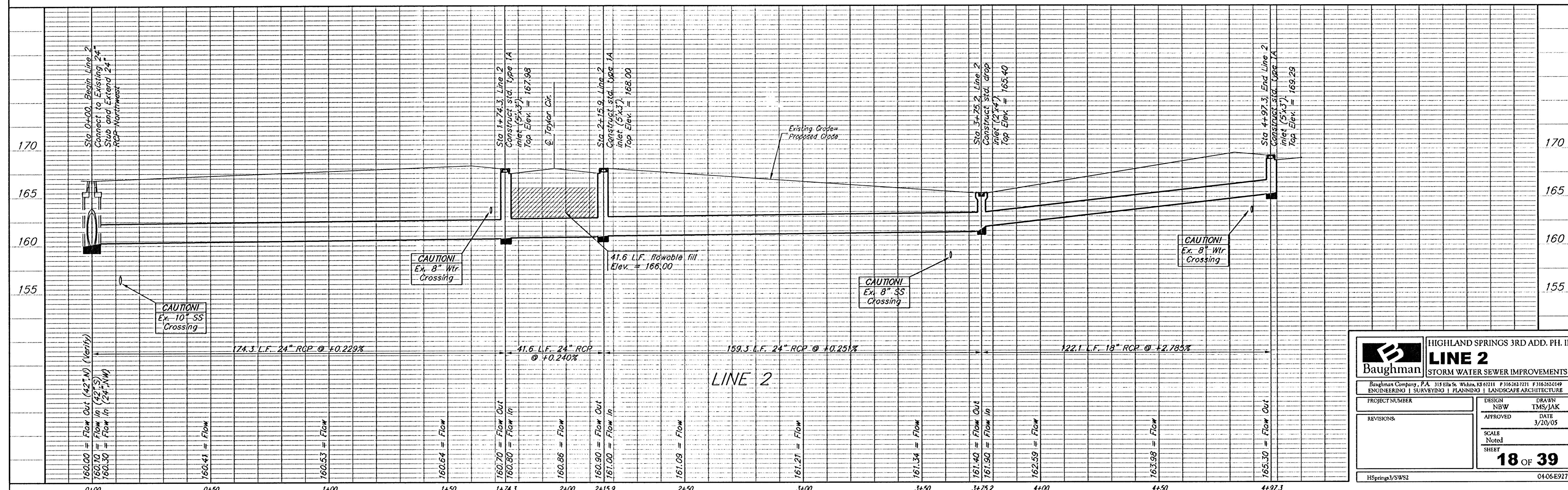
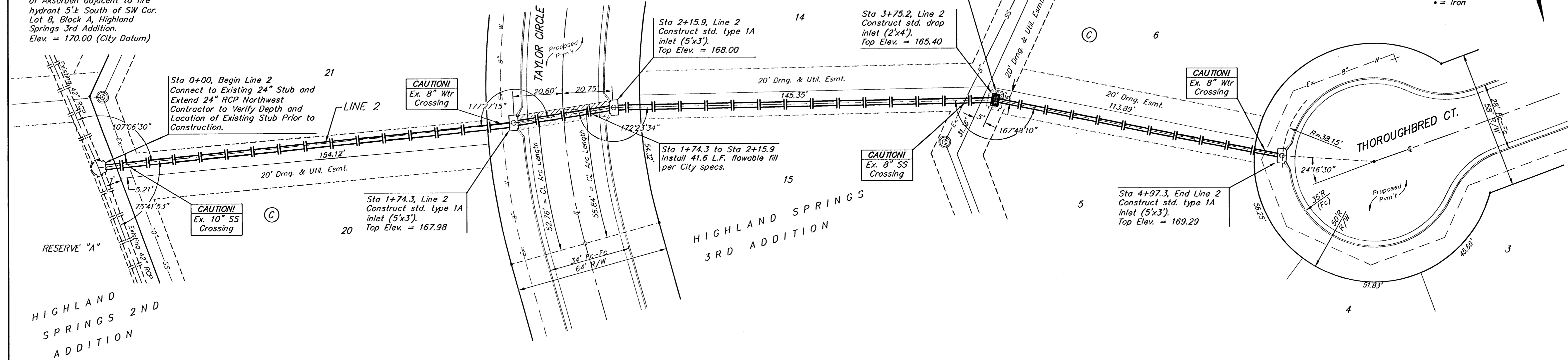


Benchmarks:

135th St. W. & Central
City of Wichita Benchmark
DISC - NE Cor. Intersection,
32.6' N. & 24.5' E. of C both,
39.5' NE of Iron at Sec. Cor.
Elev. = 159.50 (City Datum)

Brass disc in curb - east side
of Aksarben adjacent to fire
hydrant 5'± South of SW Cor.
Lot 8, Block A, Highland
Springs 3rd Addition.
Elev. = 170.00 (City Datum)

Scale: 1" = 20' Horizontal
1" = 5' Vertical
• = Iron



		HIGHLAND SPRINGS 3RD ADD. PH. II	
		LINE 2	
STORM WATER SEWER IMPROVEMENTS		Baughman Company, P.A. 315 Ellis St. Wichita, KS 67211 P 316.263.7771 F 316.263.0149 ENGINEERING SURVEYING PLANNING LANDSCAPE ARCHITECTURE	
PROJECT NUMBER	DESIGN	DRAWN	
	NBW	TMS/JAK	
REVISIONS:	APPROVED	DATE	3/20/05
	SCALE	Noted	
	SHEET	18 OF 39	
HSprings3/SWS2		04-06-E927	