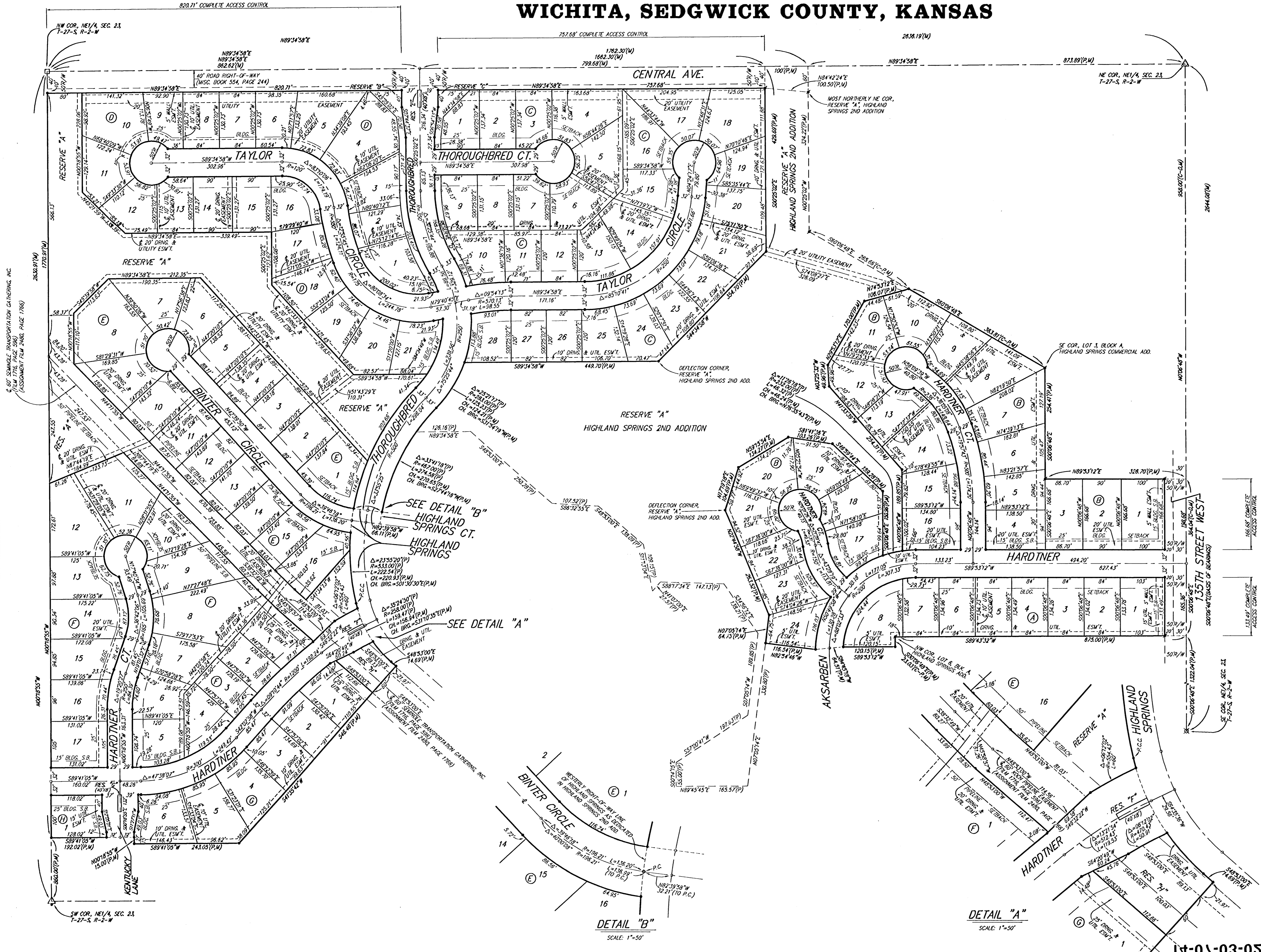


HIGHLAND SPRINGS 3RD ADDITION WICHITA, SEDGWICK COUNTY, KANSAS



- #1 REBAR W/ BAUGHMAN CAP (SET)
- #1 REBAR W/ BAUGHMAN CAP (FOUND)
- ▲ STONE W/ #1 REBAR ON S. SIDE (FOUND)
- ▲ 1/2" IRON OVER #1 STONE (FOUND)
- 3/4" IRON (FOUND)
- STONE W/ #3 REBAR ON N. SIDE (FOUND)

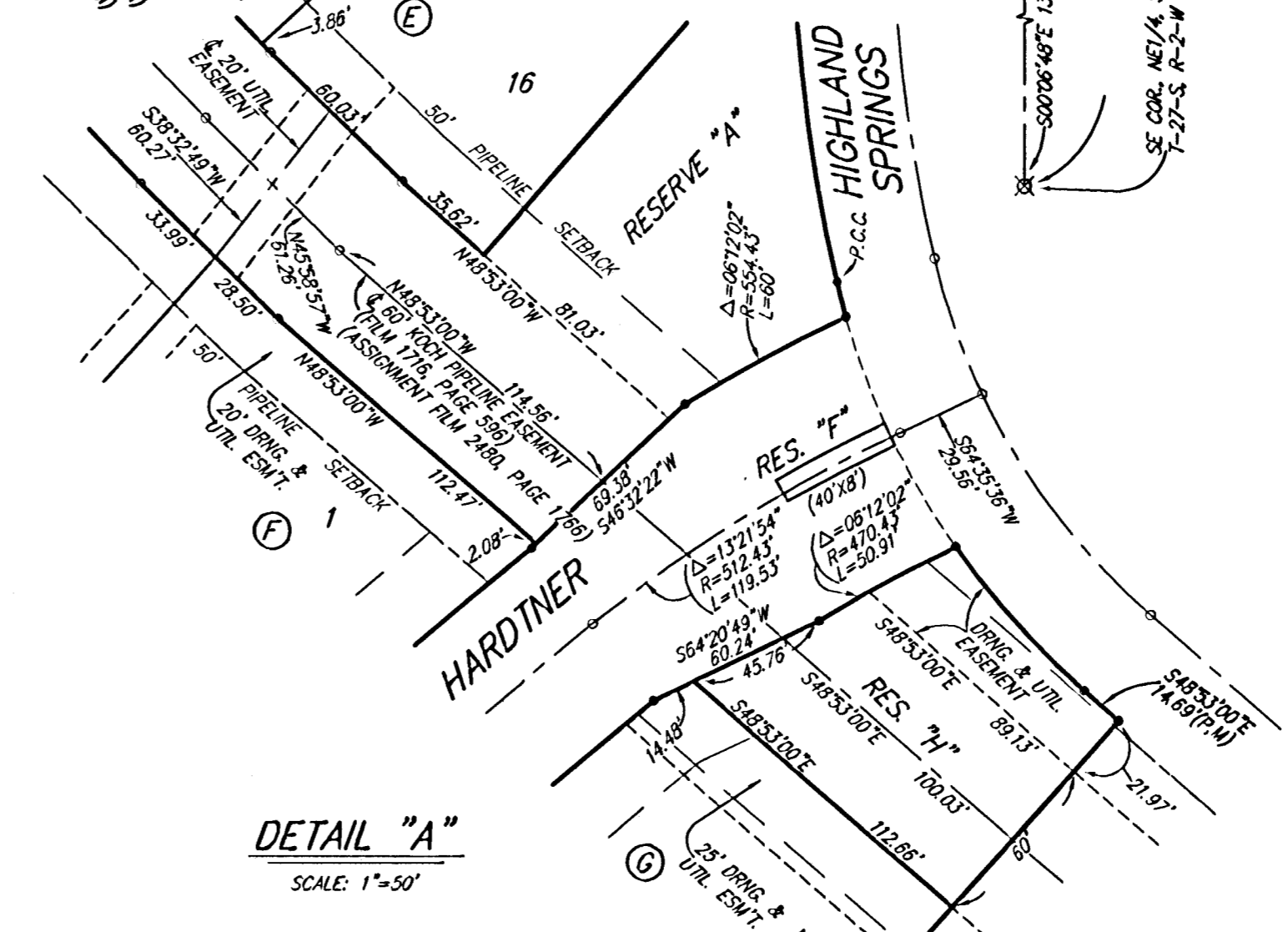
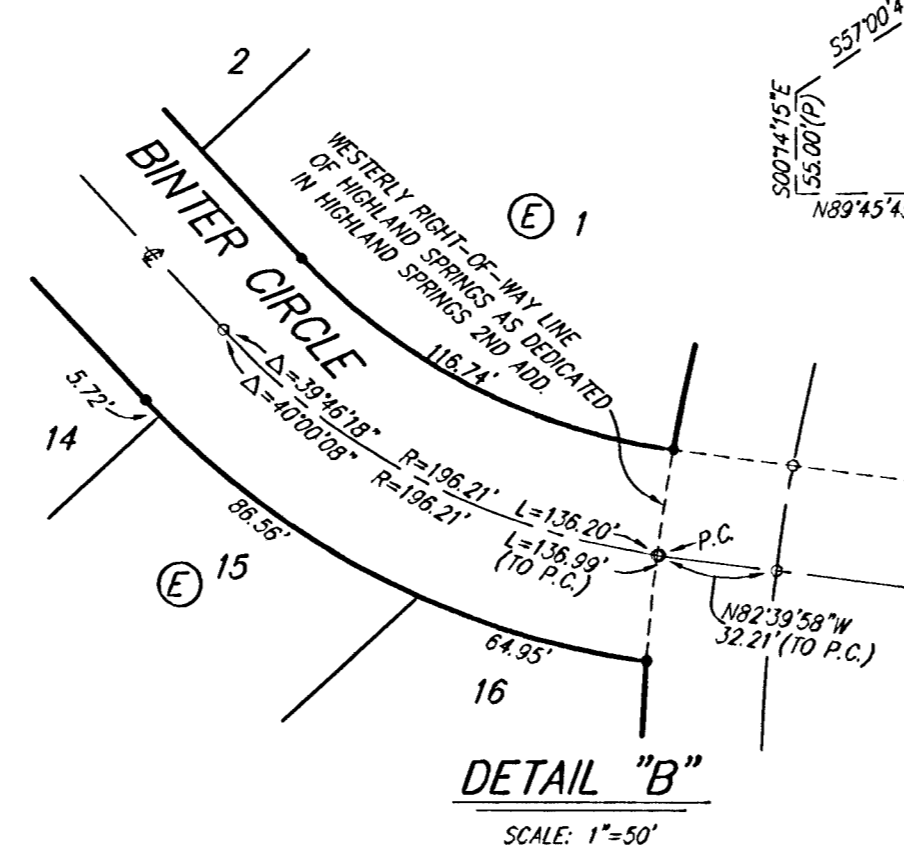
(M) = MEASURED
 (P) = PLATTED
 (C-P) = CALCULATED PER PLATTED INFO.
 (C-D) = CALCULATED PER DESCRIBED INFO.

MINIMUM BUILDING PAD ELEVATIONS FOR
LOWEST OPENING TO THE STRUCTURES

LOT	BLOCK	ELEVATION	
		CITY DATUM	NGVD 29
10-24	B	165.0	1352.4
18-28	C	165.0	1352.4
19-21	D	168.0	1353.4
13-18	D	167.0	1354.4
10-12	D	168.0	1355.4
1-4	E	166.0	1353.4
5-7	E	167.0	1354.4
8	E	168.0	1355.4
9,10	E	169.0	1356.4
11,12	F	169.0	1356.4

BENCHMARK:
 1357M ST. W. & CENTRAL
 CITY OF WICHITA BENCHMARK DISC - NE COR. INTERSECTION
 326' N. & 243' E. OF E. 80TH, 39.5' NE OF IRON AT SEC. COR.
 ELEV. = 159.50 CITY DATUM
 (1346.90 M.S.L.)

NOTE:
 A master grading plan for drainage has been developed for this subdivision and is on file with the City of Wichita, Kansas. All drainage easements, right-of-ways, or reserves shall remain of established grades or as modified with the approval of the City Engineer of the City of Wichita, Kansas. No obstructions which impede the flow of this drainage system be allowed.



50-03-04