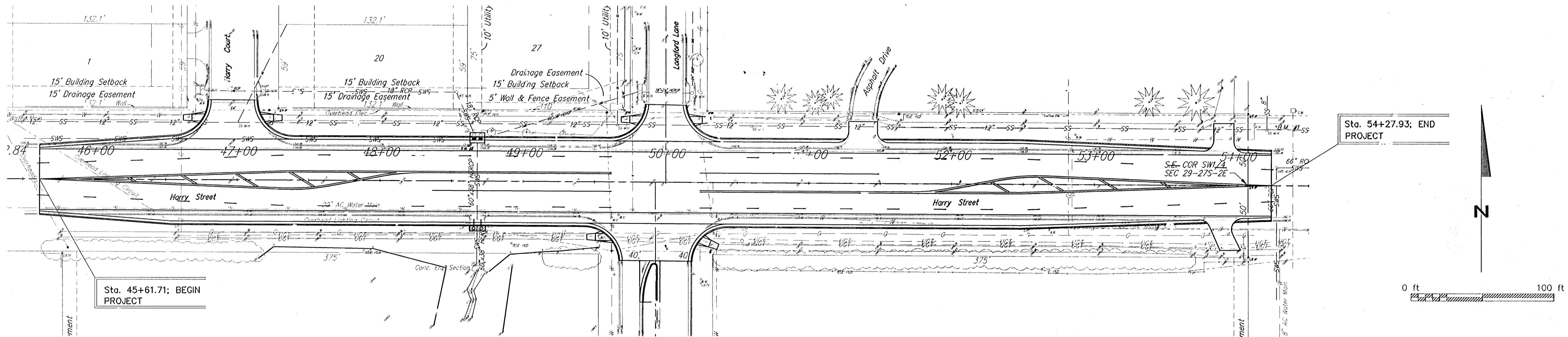


STATE OF KANSAS
CITY OF WICHITA
SEDGWICK COUNTY
HARRY STREET AND LONGFORD LANE INTERSECTION IMPROVEMENTS
PROJECT NO. 472-83998
OCA. 706907

GRADING
PAVEMENT
STORM SEWER
PAVEMENT MARKING

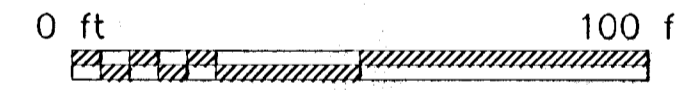
INDEX OF SHEETS

- 1.....TITLE SHEET
- 2.....TYPICAL SECTION
- 3-4.....PLAN SHEETS
- 5-8.....PAVING DETAILS
- 9.....STORM SEWER PLAN & PROFILE
- 10.....INLET DETAILS
- 11-14.....TEMPORARY EROSION AND POLLUTION CONTROL
- 15.....PAVEMENT MARKING PLANS
- 16-20.....TRAFFIC CONTROL PLANS



Sta. 45+61.71; BEGIN PROJECT

Sta. 54+27.93; END PROJECT

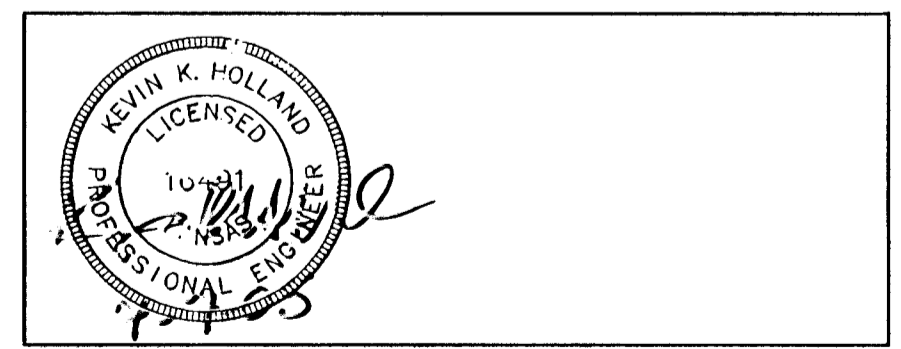


NOTE: ROAD SHALL REMAIN OPEN TO THRU TRAFFIC DURING CONSTRUCTION.

DESIGN SPEED 40 MPH

PLANS PREPARED BY:

CFS Cook, Flatt & Strobel
ENGINEERS, P.A.



APPROVED :

JIM ARMOUR, P.E.
INTERIM CITY ENGINEER
DATE 2005

CONVENTIONAL SIGNS

COUNTY LINE	-----	CENTER LINE OF PROJECT	----- 50 ----- 1
CITY LIMITS	-----	TERRACE	-----
STATE OR NATIONAL LINE	-----	CULVERTS	-----
TOWNSHIP, SECTION or GRANT LINE	-----	DROP INLET & STORM SEWER	-----
PROPERTY LINE	-----	ACCESS CONTROL	-----
HIGHWAY FENCE	-----	POWER POLE	-----
EXISTING FENCE	-----	TELEPHONE POLE	-----
GUARD FENCE	-----	MARSH	-----
CONSTRUCTION LIMITS	-----	HEDGE	-----
RIGHT OF WAY LINE	-----	TREES	-----
TRAVELED WAY	-----	PROFILE ELEVATION	-----
RAILROADS	-----	STREAM or CREEK	-----

GROSS LENGTH OF PROJECT	-	868.22 ft.
EXCEPTICNS	-	ft.
NET LENGTH OF PROJECT	-	868.22 ft.
NET LENGTH OF BRIDGES	-	ft.
NET LENGTH OF ROAD	-	868.22 ft.

J:\04565\DWG\04565-Title 1 = 1