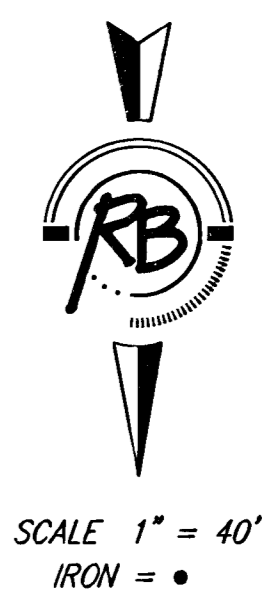


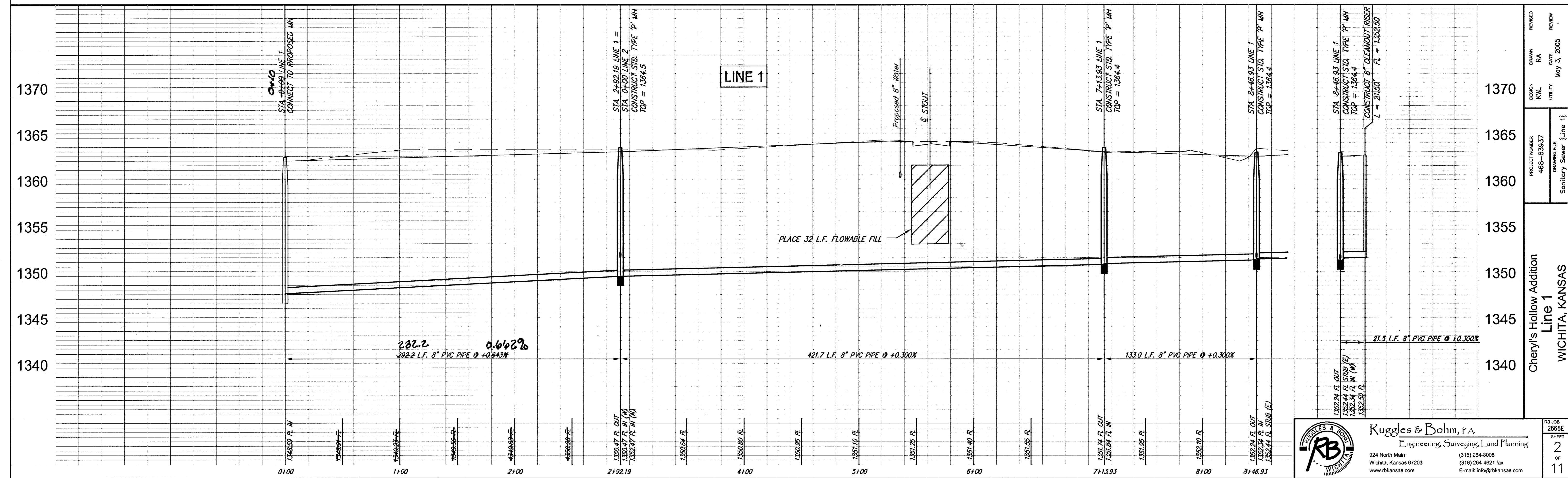
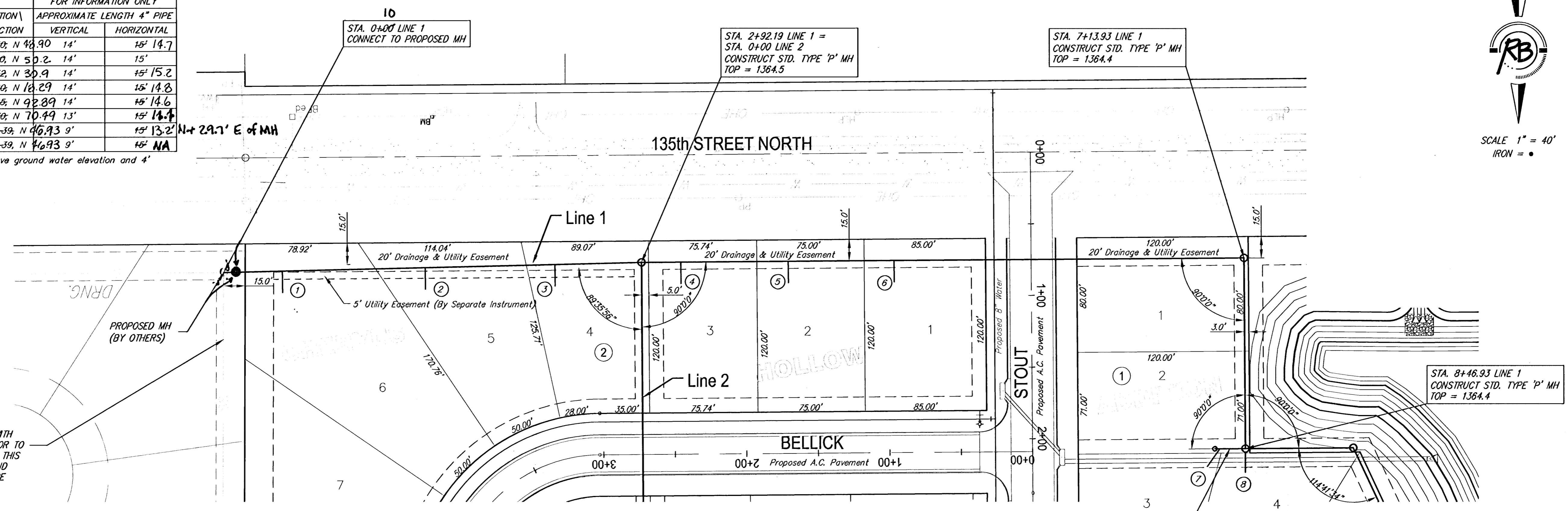
SEWER SERVICE TABLE

NUMBER	TYPE	SERVING			FOR INFORMATION ONLY	
		LOT NO.	BLOCK NO.	LINE NO.	STATION \ DIRECTION	APPROXIMATE LENGTH 4" PIPE
1	8"x4" Saddle	5	2	1	0+50; N 48.90 14'	15' 14.7
2	8"x4" Saddle	5	2	1	1+50; N 50.2 14'	15'
3	8"x4" Saddle	4	2	1	2+32; N 30.9 14'	15' 15.2
4	8"x4" Saddle	3	2	1	3+20; N 18.29 14'	15' 14.8
5	8"x4" Saddle	2	2	1	3+05; N 92.89 14'	15' 14.6
6	8"x4" Saddle	1	2	1	4+70; N 70.49 13'	15' 14.4
7	8"x4" Saddle	3	1	1	8+46-59; N 46.93 9'	15' 13.2
8	4" MH Stub	4	1	1	8+46-59; N 46.93 9'	15' NA

NOTE: Vertical Riser Pipe shall be extended to 2' minimum above ground water elevation and 4' maximum below proposed ground elevation.



THIS LINE TO BE CONSTRUCTED WITH PROJECT CONTRACTOR TO COORDINATE CONSTRUCTION WITH THIS PROJECT. FIELD VERIFY FLOWS AND NOTIFY ENGINEER IF CHANGES ARE NECESSARY.



DESIGN	KML	DATE	May 3, 2005
DRAWN	RA	REVIEW	
PROJECT NUMBER	468-83937	DRAWING FILE	Sanitary Sewer (Line 1)
Cheryl's Hollow Addition Line 1 WICHITA, KANSAS			

Ruggles & Bohm, P.A.
 Engineering, Surveying, Land Planning
 924 North Main
 Wichita, Kansas 67203
 www.rbkansas.com
 (316) 264-8008
 (316) 264-4821 fax
 E-mail: info@rbkansas.com