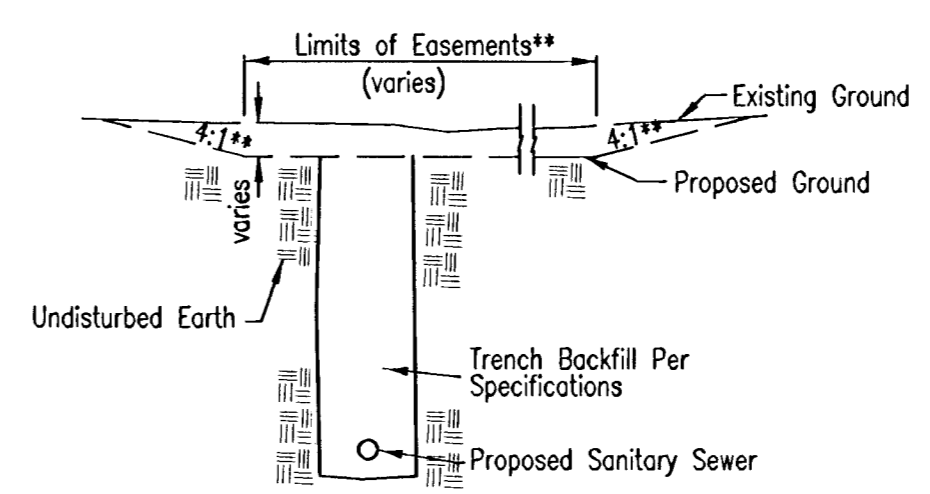
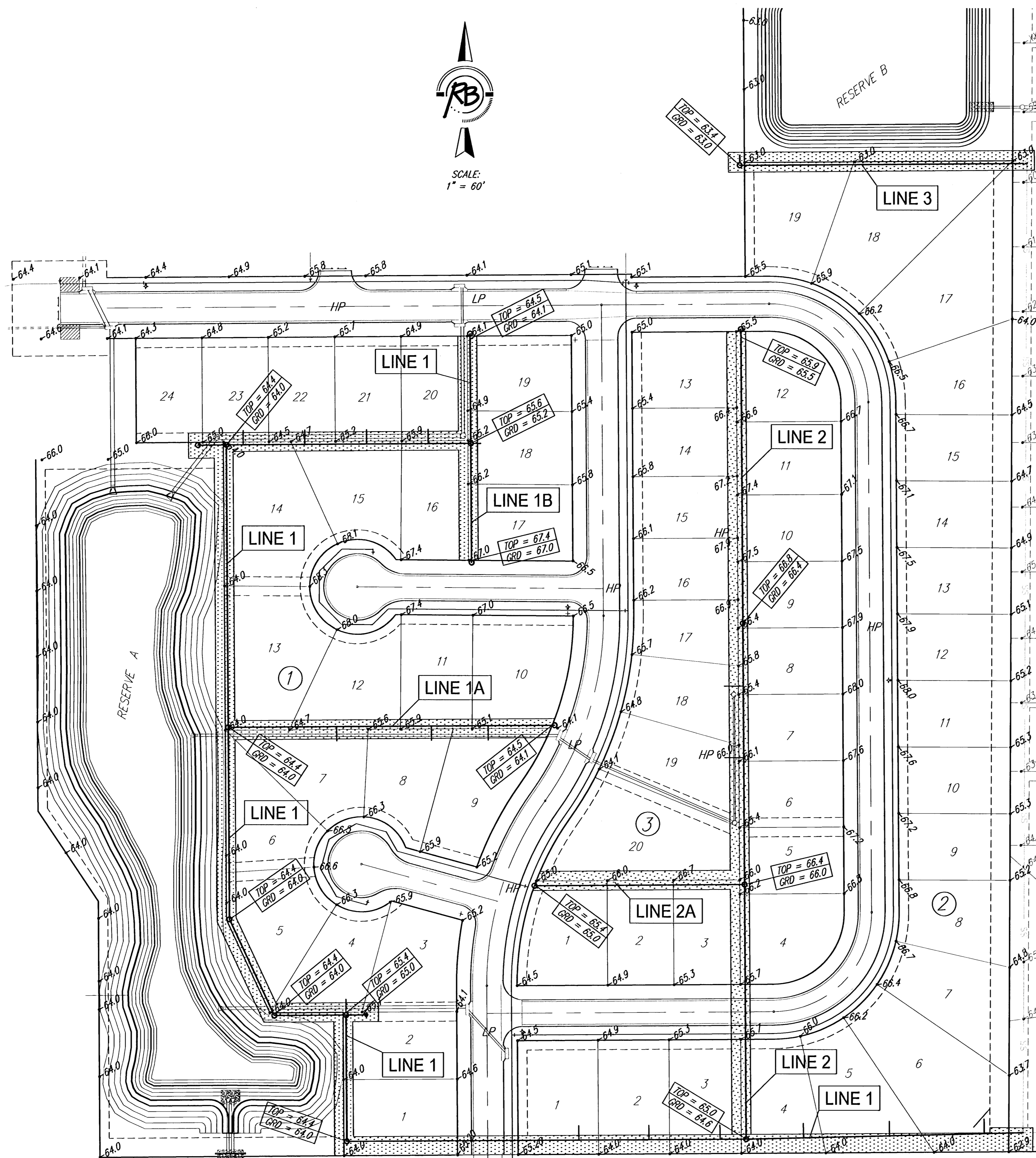
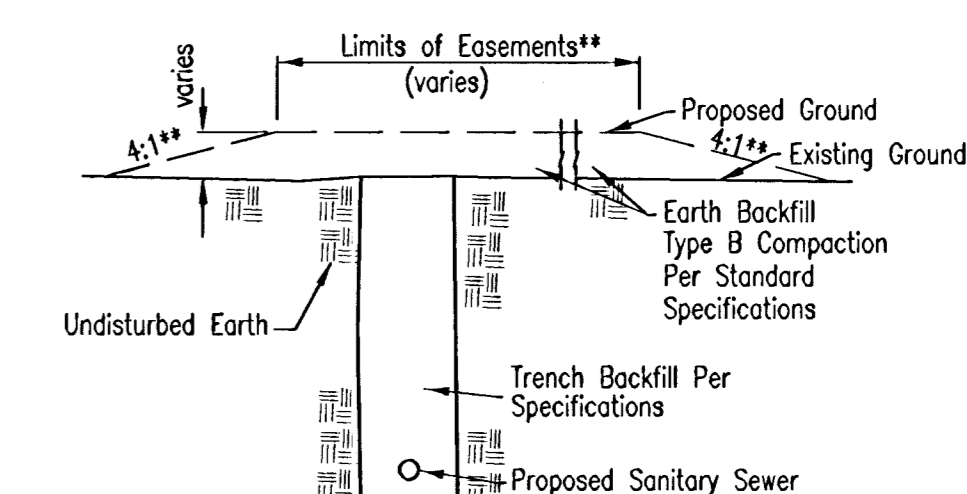




SCALE:
1" = 60'



TYPICAL SECTION
"CUT" SITUATIONS



TYPICAL SECTION
"FILL" SITUATIONS

**Graded widths and slopes may vary as approved by the Engineer to minimize conflict with existing trees.

EASEMENT GRADING DETAILS

= AREAS TO BE GRADED

LINE 1
950 L.F. X 22' X 0.25' = $\frac{5,225 \text{ C.F.}}{27}$ = 193.5 C.Y. CUT
950 L.F. X 22' X 0.25' = $\frac{5,225 \text{ C.F.}}{27}$ = 193.5 C.Y. FILL

LINE 1B
60 L.F. X 22' X 0.25' = $\frac{330 \text{ C.F.}}{27}$ = 13 C.Y. CUT
60 L.F. X 22' X 0.25' = $\frac{330 \text{ C.F.}}{27}$ = 13 C.Y. FILL

LINE 2A
110 L.F. X 22' X 0.25' = $\frac{605 \text{ C.F.}}{27}$ = 23 C.Y. CUT
110 L.F. X 22' X 0.25' = $\frac{605 \text{ C.F.}}{27}$ = 23 C.Y. FILL

LINE 1A
171 L.F. X 22' X 0.25' = $\frac{940 \text{ C.F.}}{27}$ = 35 C.Y. CUT
171 L.F. X 22' X 0.25' = $\frac{940 \text{ C.F.}}{27}$ = 35 C.Y. FILL

LINE 2
422 L.F. X 22' X 0.25' = $\frac{2,321 \text{ C.F.}}{27}$ = 86 C.Y. CUT
422 L.F. X 22' X 0.25' = $\frac{2,321 \text{ C.F.}}{27}$ = 86 C.Y. FILL

LINE 3
150 L.F. X 22' X 0.25' = $\frac{825 \text{ C.F.}}{27}$ = 31 C.Y. CUT
150 L.F. X 22' X 0.25' = $\frac{825 \text{ C.F.}}{27}$ = 31 C.Y. FILL

Easement Grading will be bid on a lump sum basis for grading the easements to the profile and elevations shown on the Easement Grading Plan (this sheet). Approximate quantities of earthwork for easement grading are shown below. These approximate quantities are given for information only. The Contractor should verify the quantities when preparing the proposal.
Cut 381.5 C.Y. (Approximate)
Fill 381.5 C.Y. (Approximate)

NOTES:
Proposed Grade as shown on profiles indicates grade as designated on Site Grading Plan and shall be completed (By Other Project) prior to time of Sanitary Sewer construction.
Sewer Contractor to grade easements to provide positive drainage as necessary.

GRADE EASEMENTS 20' WIDE EXCEPT IN AREAS INDICATED.

SHERYL'S HOLLOW ADDITION EASEMENT GRADING WICHITA, KANSAS			
	Ruggles & Bohm, P.A. Engineering, Surveying, Land Planning		DESIGN KWL
	924 North Main Wichita, Kansas 67203 www.rbkansas.com		DRAWN RA
	(316) 264-8008 (316) 264-4621 fax E-mail: info@rbkansas.com		REVIEW
DRAWING FILE Sanitary Sewer [ESMT GRADING]	PROJECT NUMBER 468-83937	DATE May 3, 2005	SHEET 7 OF 11