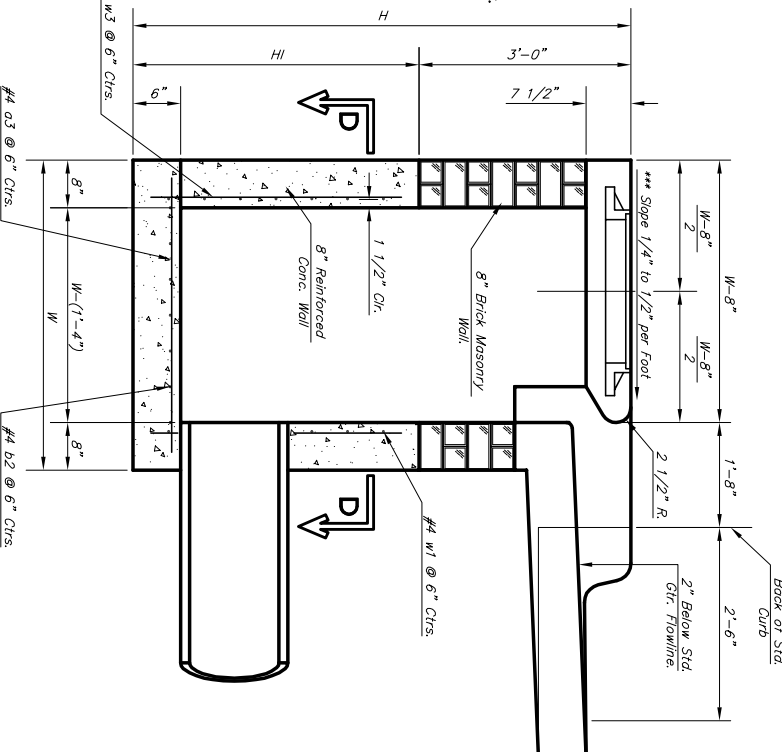


NOTE:
Expansion Joint Only in Curb Area With Concrete Pavement.

PLAN

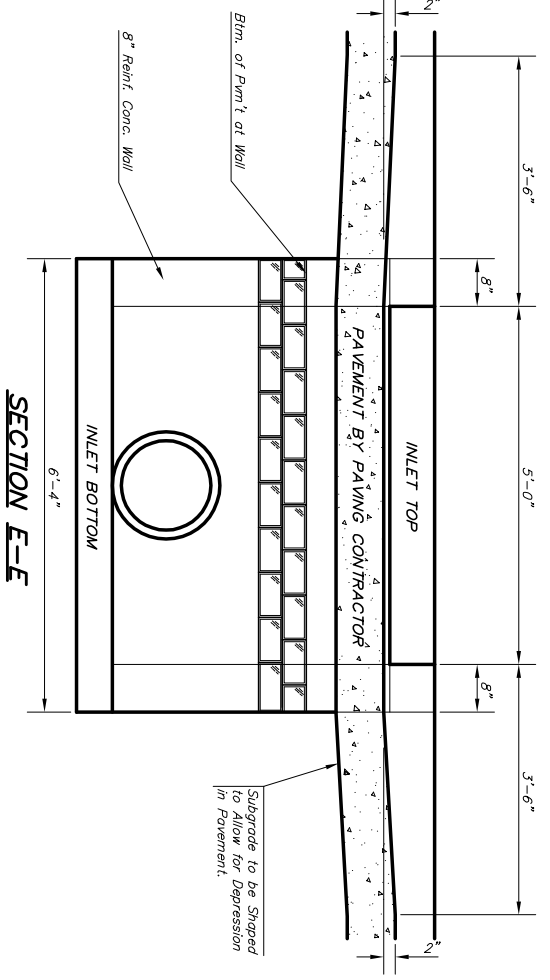
NOTE:
Inlet Top Reinforcing shall be Spaced on 6" Max. Centers. Inlet Lids Shall be Notched Out as Indicated to Facilitate Construction of Curb.

NOTE:
Concrete Tops to be installed on thin mortar cushion to insure full support along brick walls. Concrete Tops may be cast in place or precast. Concrete used for inlet construction shall be concrete pavement mix with oil entrainment.

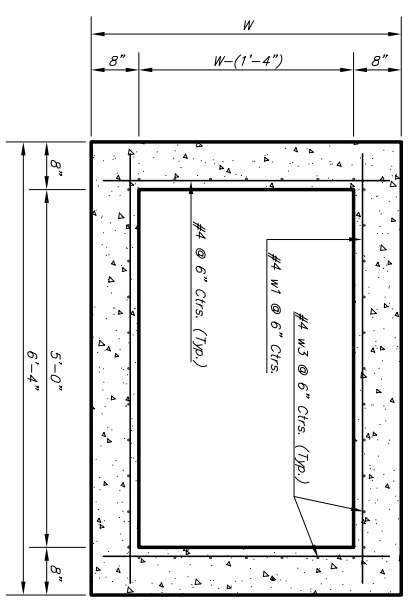


SECTION A-A

NOTE: Slope of Inlet tops to Match Slewark or Parking Slopes within Limits Indicated.

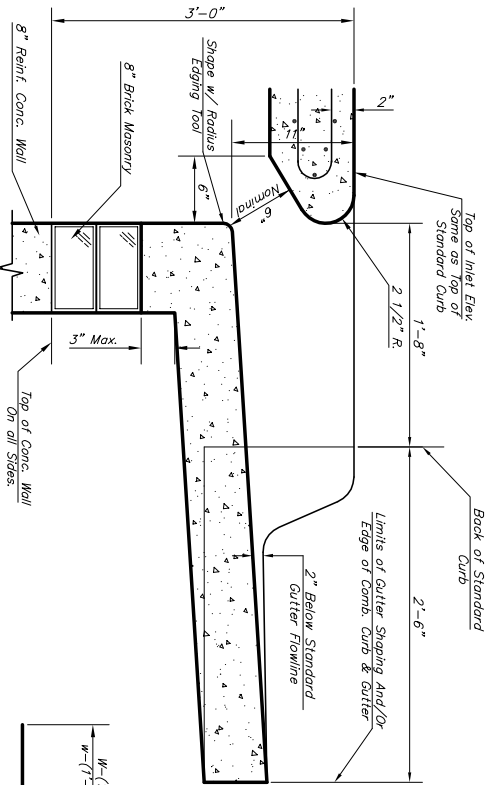


SECTION E-E



SECTION D-D

NOTE: Contractor shall have the option of constructing 8" brick masonry well on the back of curb and top on this inlet when W=6'-4" and H=7'-0" or less.
Additional curb and gutter construction necessary to connect set-back inlet to pavement will be paid for at the unit price bid for each inlet hookup.
Inlet invert shall be sloped with 8 sock sand mix concrete to create flow channels and to increase hydraulic efficiency such that the inlet will be self-cleaning between all inlet and/or outlet pipes.
The ends of all pipes installed in inlets shall be cut off flush with the inside face of the inlet wall.



SECTION B-B

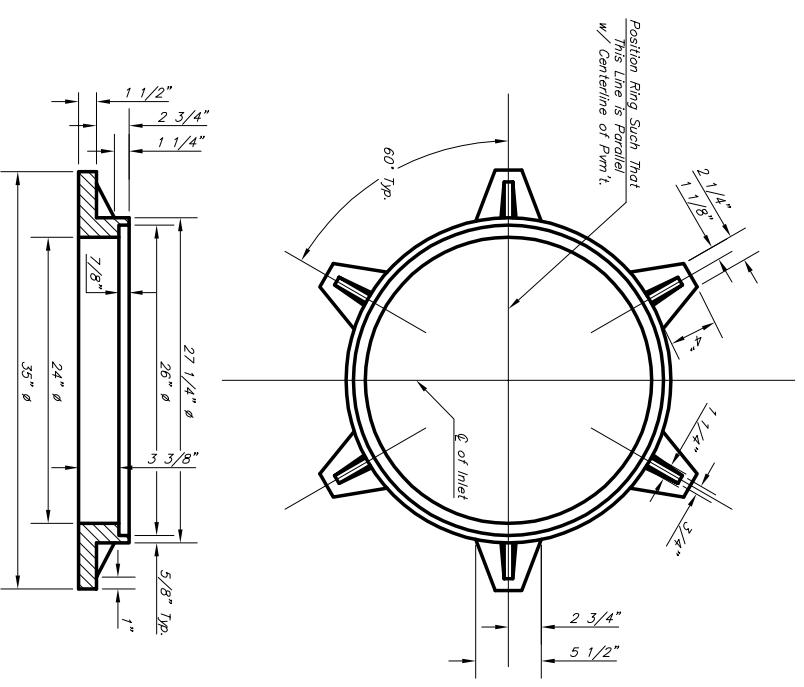
PRECAST SLAB AND FLOOR REINFORCING

MARK	SIZE	NO.	LENGTH	NO.	LENGTH	NO.	LENGTH	NO.	LENGTH	NO.	LENGTH
	W = 4'-4"		W = 5'-4"		W = 6'-4"		W = 7'-4"		W = 8'-4"		
MARK	SIZE	NO.	LENGTH	NO.	LENGTH	NO.	LENGTH	NO.	LENGTH	NO.	LENGTH
* a1	#4	6	6'-7"	6	8'-7"	6	10'-7"	6	12'-7"	6	14'-7"
a2	#4	4	6'-0"	4	8'-0"	4	10'-0"	4	12'-0"	4	14'-0"
a3	#4	13	4'-1"	13	5'-1"	13	6'-1"	13	7'-1"	13	8'-1"
b1	#4	1	4'-9"	1	4'-9"	1	4'-9"	1	4'-9"	1	4'-9"
b2	#4	23	6'-1"	29	6'-1"	35	6'-1"	41	6'-1"	47	6'-1"
x1	#4	8	3'-10"	8	4'-2"	8	4'-6"	8	4'-10"	8	5'-2"

WALL REINFORCING

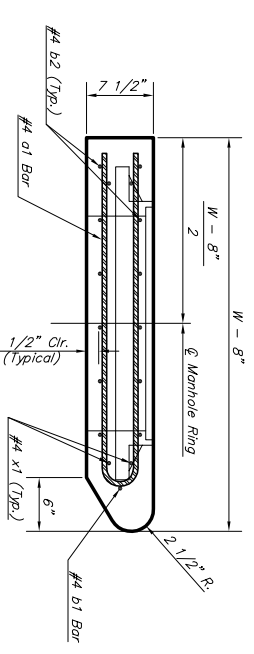
MARK	SIZE	NO.	LENGTH	NO.	LENGTH	NO.	LENGTH	NO.	LENGTH	NO.	LENGTH
W1	#4	1	6'-1"	1	6'-1"	1	6'-1"	1	6'-1"	1	6'-1"
W2	#4	32	36"	32	36"	32	36"	32	36"	32	36"
W3	#4	32	36"	32	36"	32	36"	32	36"	32	36"

* Field Band or Cut Reinforcing as Required for Clearance.
① 4 (H - 12') (H - 21') Rounded down to nearest 0.5'
② H - 3'



MANHOLE RING AND COVER

Weight = 180 Lbs.
*See City of Wichita Standard Manhole Ring and Cover Detail Sheet for Cover Details to Be Used with Inlet Frame.

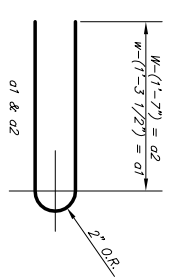


SECTION A-A

STANDARD CURB INLET PRECAST TOPS

W	PRE-CAST TOP SIZE	PIPE SIZE	CU. YD. CONC.
4'-4"	3'-6" x 6'-4" x 7 1/2"	21" & SMALLER	0.384
5'-4"	4'-8" x 6'-4" x 7 1/2"	24" & 30"	0.514
6'-4"	5'-6" x 6'-4" x 7 1/2"	36" & 42"	0.644
7'-4"	6'-8" x 6'-4" x 7 1/2"	48" & 54"	0.774
8'-4"	7'-6" x 6'-4" x 7 1/2"	60" & 66"	0.904

BENDING DIAGRAM



THE CITY OF WICHITA

CITY ENGINEER'S OFFICE

STANDARD TYPE 1-A CURB INLET OPENING = 6"X5-0"

PROJECT NUMBER: 468-84339
CITY HALL - SEVENTH FLOOR
WICHITA, KANSAS 67202
DATE: MAR 96
SHEET: 17 OF 22