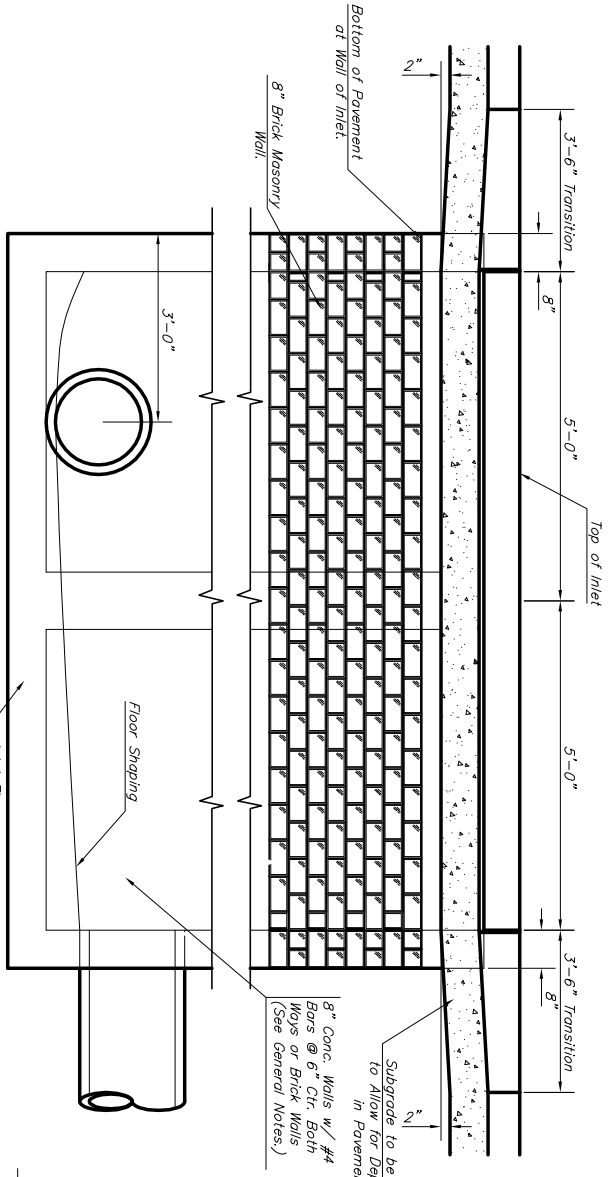


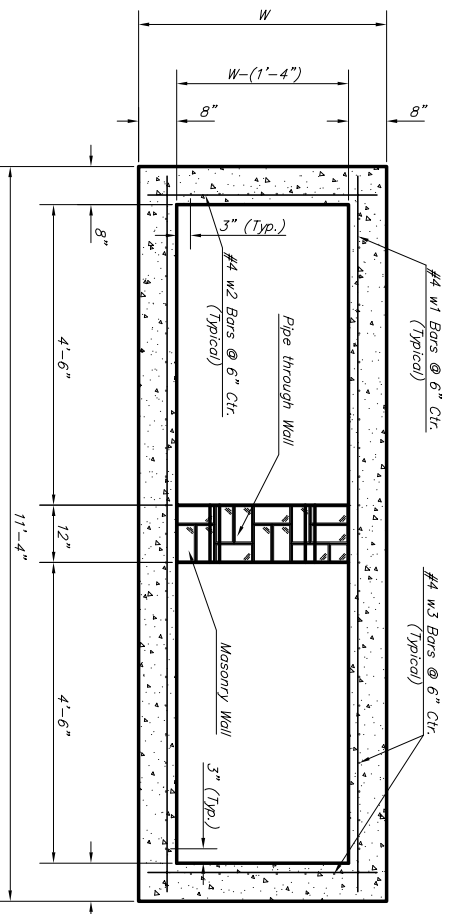
NOTE:
Expansion Joint Only in Curb Area
with Concrete Pavement.

PLAN

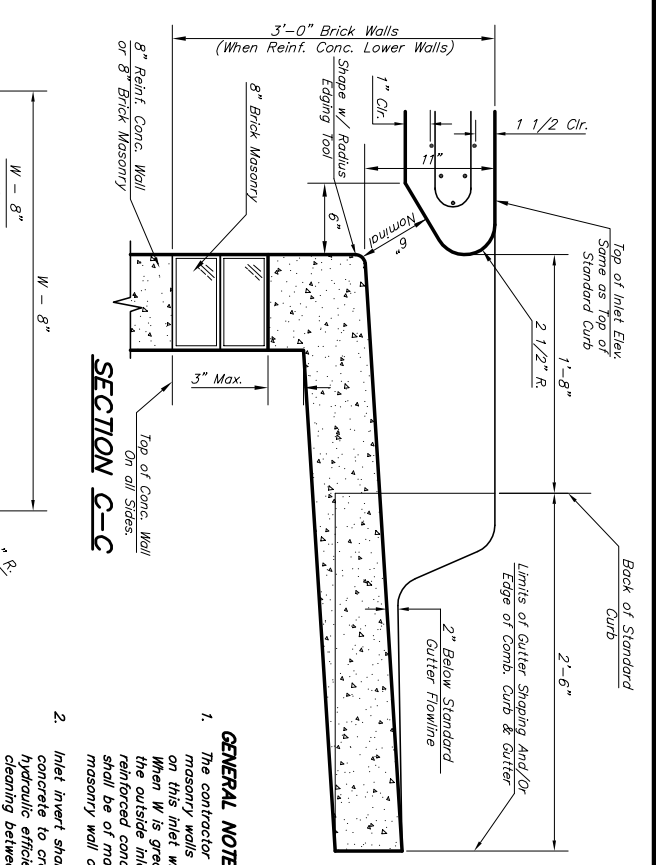
Left Side Shown Without Slab Reinforcing,
Right Side Shown With Slab Reinforcing



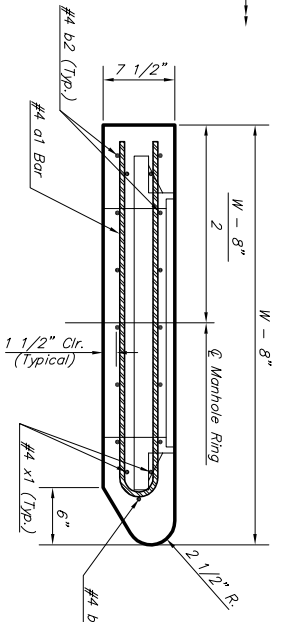
ELEVATION



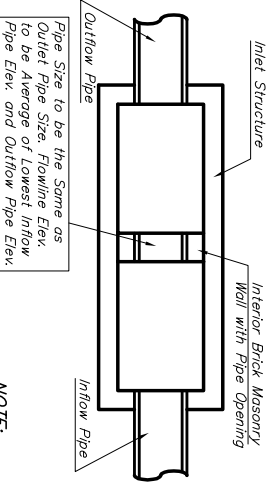
SECTION B-B



SECTION C-C

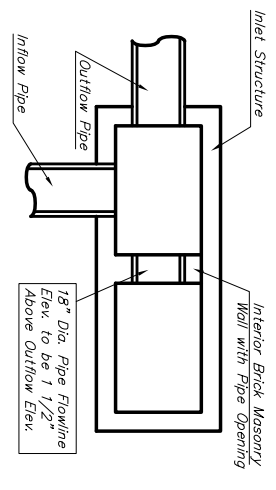


SECTION A-A

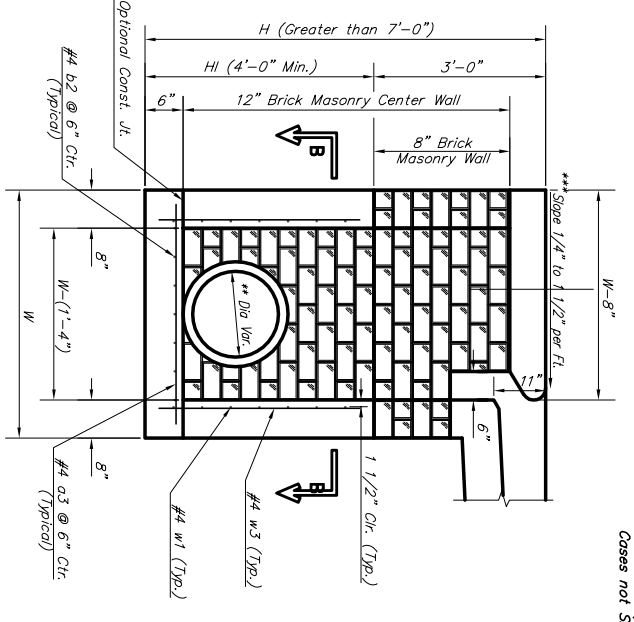


CASE I

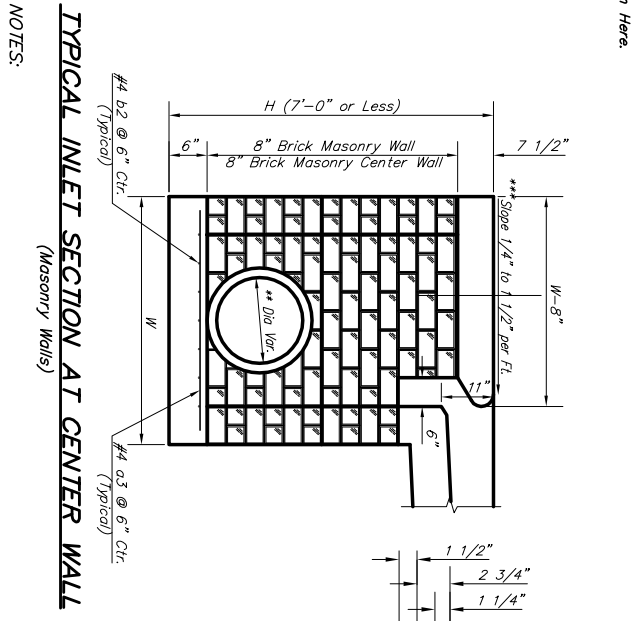
NOTE:
Center Wall Pipe Size shall be as Specified in Inlet Construction Notes on the Plan/Profile Sheets for those Cases not Shown Here.



CASE II



TYPICAL INLET SECTION AT CENTER WALL
(Reinforced Concrete Walls)



TYPICAL INLET SECTION AT CENTER WALL
(Masonry Walls)

NOTES:
** A center wall opening shall be provided by means of a section of reinforced concrete pipe. See Case I and Case II above.
*** Slope of inlet tops to match sidewalk or parking slopes within limits indicated.

GENERAL NOTES:
1. The contractor shall be required to construct 8" brick masonry walls between the concrete inlet base and top curb flange when the curb height is 2'-0" or less. When the curb height is greater than 2'-0" and H is less than 7'-0", the outside inlet walls below the brick stock shall be reinforced concrete construction and the center wall shall be of masonry construction as shown for the masonry wall option.
2. Inlet inverts shall be sloped with 8 sack sand mix concrete to create flow channels and to increase hydraulic efficiency such that the inlet will be self-cleaning between all inlet and/or outlet pipes.
3. Concrete tops to be installed on thin mortar cushion to insure full support along brick walls. Concrete tops may be cast in place or precast. Concrete used for inlet construction shall be concrete pavement mix.
4. Inlet top reinforcing shall be spaced on 8" max. centers. Inlet lids shall be notched out as indicated to facilitate construction of curb. Bars in inlet top to be field bent or cut to clear manhole ring.
5. The ends of all pipes installed in inlets shall be cut off flush with the inside face of the inlet wall.

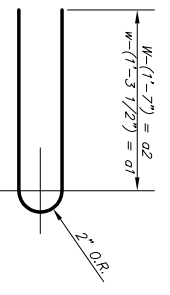
PRECAST SLAB AND FLOOR REINFORCING

MARK	SIZE	NO.	LENGTH	NO.	LENGTH	NO.	LENGTH	NO.	LENGTH	NO.	LENGTH
W-4	4'-4"	16	3'-10"	W-5	5'-4"	16	4'-2"	W-6	6'-4"	16	4'-10"
W-1	4'-4"	13	6'-7"	W-2	5'-4"	13	10'-2"	W-3	6'-4"	13	14'-2"
W-2	4'-4"	23	8'-0"	W-3	5'-4"	23	10'-0"	W-4	6'-4"	23	14'-0"
W-3	4'-4"	23	4'-1"	W-4	5'-4"	23	6'-1"	W-5	6'-4"	23	8'-1"
W-4	4'-4"	23	9'-9"	W-5	5'-4"	23	9'-9"	W-6	6'-4"	23	9'-9"
W-5	4'-4"	23	11'-1"	W-6	5'-4"	29	11'-1"	W-7	6'-4"	47	11'-1"
W-6	4'-4"	16	3'-10"	W-7	5'-4"	16	4'-6"	W-8	6'-4"	16	5'-2"

WALL REINFORCING

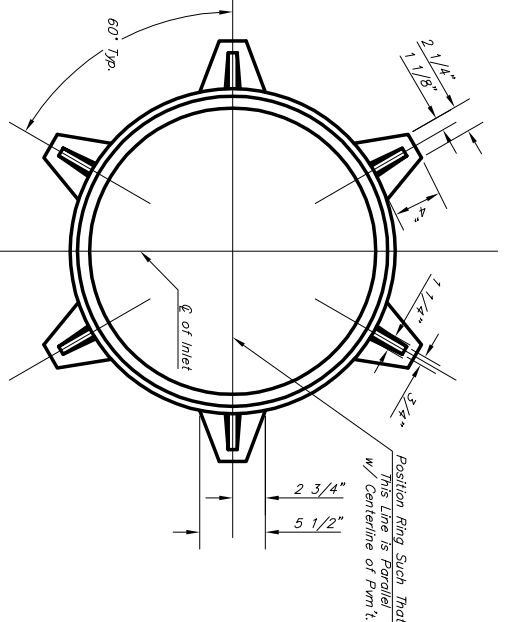
MARK	SIZE	NO.	LENGTH	NO.	LENGTH	NO.	LENGTH	NO.	LENGTH
W1	#4	11	11'-1"	W2	11'-1"	11	11'-1"	W3	11'-1"
W2	#4	11	4'-1"	W3	5'-1"	11	6'-1"	W4	7'-1"
W3	#4	52	56	W4	60	64	68	W5	68

BENDING DIAGRAM



STANDARD CURB INLET PRECAST TOPS

W	PRE-CAST TOP SIZE	PIPE SIZE	CU. YD. CONC.
4'-4"	3'-8" 11'-4" 7 1/2"	21" & SMALLER	0.834
5'-4"	4'-8" 11'-4" 7 1/2"	24" & 30"	1.084
6'-4"	5'-8" 11'-4" 7 1/2"	36" & 42"	1.334
7'-4"	6'-8" 11'-4" 7 1/2"	48" & 54"	1.614
8'-4"	7'-8" 11'-4" 7 1/2"	60" & 66"	1.874



MANHOLE RING AND COVER

Weight = 180 lbs.
*See City of Wichita Standard Manhole Ring and Cover Detail Sheet for Cover Details to Be Used With Inlet Frame.

STANDARD TYPE 1-A CURB INLET OPENING = 6"X10'-0"

THE CITY OF WICHITA

CITY ENGINEER'S OFFICE
CITY HALL - SEVENTH FLOOR
WICHITA, KANSAS 67202
(316) 268-1490
(316) 268-1141 FAX

PROJECT NUMBER 468-84339
DATE MAR 96
SHEET 18 OF 22

CSA # 751448