

Lateral 3, Main 4, Northwest Interceptor Sewer  
**SANITARY SEWER IMPROVEMENTS**  
 to serve  
**COPPER GATE NORTH ADDITION - PHASE I**  
 and  
**CHERYL'S HOLLOW - PHASE I**  
 CITY OF WICHITA, KANSAS

James L. Armor, P.E. City Engineer

Project Number  
 468-83907  
 O.C.A. Number  
 744120

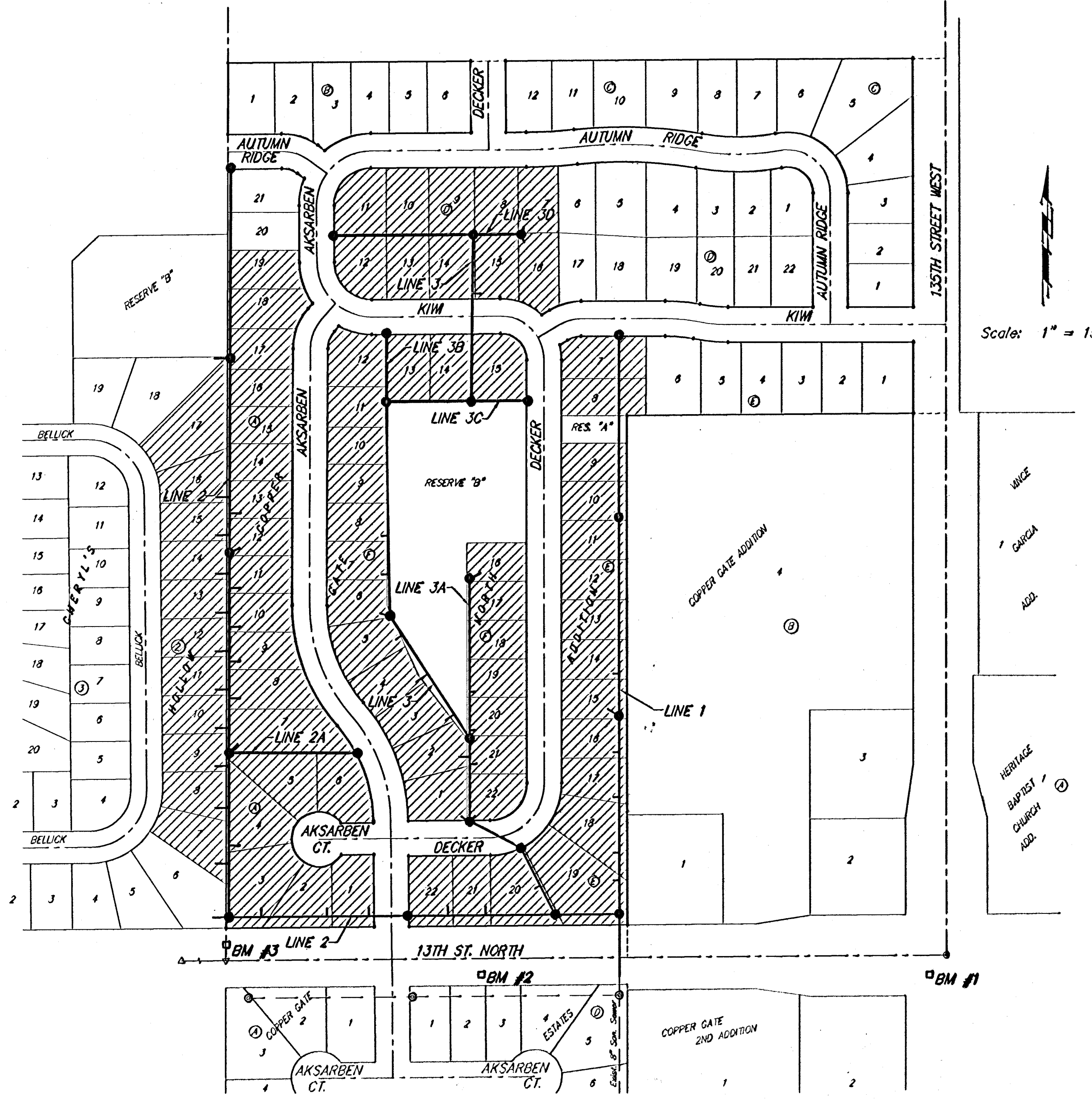
*Duling Construction Co., Inc. - Contractor*  
*Wilson, City-Inspector*  
*Released 1/16/06*  
*As-Built*  
*Risers + stubs*  
*.pdf by JDL 3/6/06*

**Benchmarks**

BM #1: C.O.W. disc at SW corner of intersection.  
 30.00'± S. of CL of 13th St. N.  
 35.00'± W. of CL of 135th St. W.  
 Elev. = 168.25 City Datum

BM #2: Small RR spike in 4th HLP  
 W. of 135th St. W. on south side  
 of 13th St. N. (N. face of HLP).  
 Elev. = 179.24 City Datum

BM #3: RR spike in Power Pole.  
 1321.65 W. of 135th St. W.  
 30' N. of 13th St. N.  
 Elev. = 178.45 City Datum

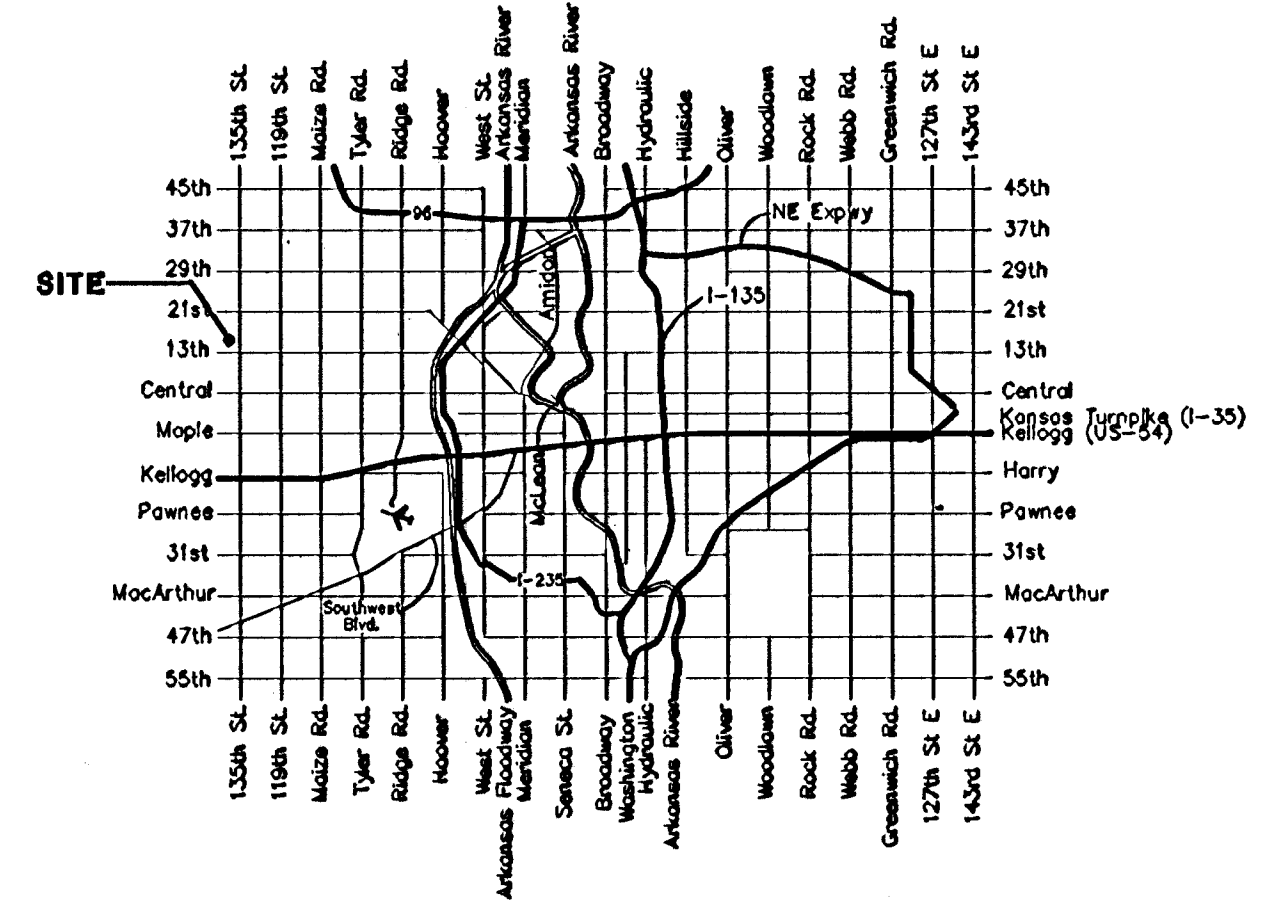


**GENERAL NOTES:**

- Contractor will be required to provide notice to utility companies a minimum of twenty-four (24) hours prior to any excavation, as follows:  
 Kansas One-Call 687-2470  
 The Contractor must notify the following in case of an emergency:  
 Cox Communications 262-4270  
 Kansas Gas Service 1-888-482-4950  
 Westar Energy 383-8650  
 Aquila Energy 1-800-303-0357  
 SBC 268-2249  
 City of Wichita Water Dept. 268-4563  
 City of Wichita Sewer Maint. 268-4024  
 City of Wichita Storm Sewer Maint. 268-4090  
 City of Wichita Traffic Maint. 268-4034  
 Conoco Pipeline Co. 1-800-231-2531  
 Southern Star Pipeline Co. 529-6600  
 Phillips Pipeline Co. 1-800-766-8230  
 Jayhawk Pipeline Co. 1-888-542-9573
- Utility service lines, poles, valve boxes, meters, and appurtenances are to be adjusted as necessary by others prior to construction unless the plans specifically call for their adjustment by the Contractor or unless the plans specifically identify a utility to be adjusted by its owner during construction. Existing utilities and their location, as shown on the plans, represent the best information obtainable for design. The Contractor will be required to work around existing utilities within the right-of-way which do not conflict with proposed construction.
- Rubble from the removal of miscellaneous structures and excess excavation which is to be wasted shall be disposed of on sites to be provided by the Contractor. These sites shall be approved by the Engineer as to suitability, appearance and site location. Locations, in the opinion of the Engineer, that will leave an unsightly appearance will not be approved. All disposal sites must be approved by the Kansas Department of Health and Environment. Material either stockpiled or disposed of in a flood plain would require a Kansas State Board of Agriculture permit. Any material dumped in waters of the United States or wetlands is subject to U.S. Corps of Engineers permitting regulations. Any material buried or stockpiled beyond approved construction limits would require additional archaeological investigations unless buried in a previously approved borrow location.
- Trees and shrubs in public right-of-way which are in direct conflict with proposed new construction shall be removed by the Contractor with the Engineer's approval. Trees and shrubs which are not in direct conflict with proposed new construction shall be saved and protected from damage.
- The Contractor shall give all property owners and/or tenants of developed property abutting the construction of this project a minimum of ten (10) days advance notice prior to start of construction.
- The Contractor shall be responsible for preserving property irons. The Contractor will be required to re-establish any property irons which are damaged or destroyed by his construction operations. Such irons shall be re-established by a licensed land surveyor in accordance with state laws.
- All existing and proposed erosion control measures including silt fencing, erosion control mat, straw bales, inlet barriers, and const. entrance shall be maintained throughout construction by the contractor and until project is accepted by the City of Wichita. The on-site engineer shall complete weekly reports on the status of erosion control measures. The contractor shall be required to comply with maintenance and/or replacement of erosion control measures as determined by the on-site engineer until project is accepted by City of Wichita. Maintenance and/or replacement of erosion control measures to be paid by L.S. bid item "Erosion Control BMP's."
- All excess excavation shall remain on-site and shall be stockpiled or spread at a location determined by the engineer.
- The Contractor shall be responsible for maintaining continuous flow of sewage through construction. Contractor's proposed method for maintaining sewage flow shall be approved by the Engineer. Cost of maintaining flow of sewage through construction will not be paid for directly and this cost shall be considered as subsidiary to the other pay items of work.
- When connecting to existing manhole or stub, the contractor shall reshape manhole bottom or adjust the existing stub's alignment or elevation as necessary. Cost shall be subsidiary to project.
- All areas disturbed during construction shall be seeded at 300 lbs./acre with Rya Grass immediately following construction in that area. Contractor shall prepare ground per City Specifications.
- The developer for this project is Paul E. Kelsey, and may be reached at (316) 722-1077
- Contractor shall grade around exposed manholes at a 1:1 slope. Manholes set lower than existing grade shall have a 9" berm constructed around manhole to prevent infiltration into sanitary sewer system. Cost of dirt, labor, equipment, etc. to be incidental to cost of manhole. Easements shall be graded and area will be seeded by others as part of the mass grading plan.

**Sheet Index**

Title Sheet	1
Line 1	2-3
Line 2	4-5
Line 2A	6
Line 3	7-9
Lines 3A & 3B	10
Lines 3C & 3D	11
Standard Manhole Detail	12
Ring & Cover Detail	13
Riser Detail	14
Erosion Control Plan	15
Erosion Control Details	16-19
Copy of Plat	20



**Vicinity Map**

Benefit District



Baughman Company, P.A. 315 Ella St. Wichita, KS 67211 P 316-262-7271 F 316-262-0149  
 ENGINEERING | SURVEYING | PLANNING | LANDSCAPE ARCHITECTURE