

BENCHMARKS:

BM #1: C.O.W. disc at SW corner of intersection. 30.00'± S. of CL of 13th St. N. 35.00'± W. of CL of 135th St. W. Elev. = 168.25 City Datum

BM #2: Small RR spike in 4th HLP W. of 135th St. W. on south side of 13th St. N. (N. face of HLP). Elev. = 179.24 City Datum

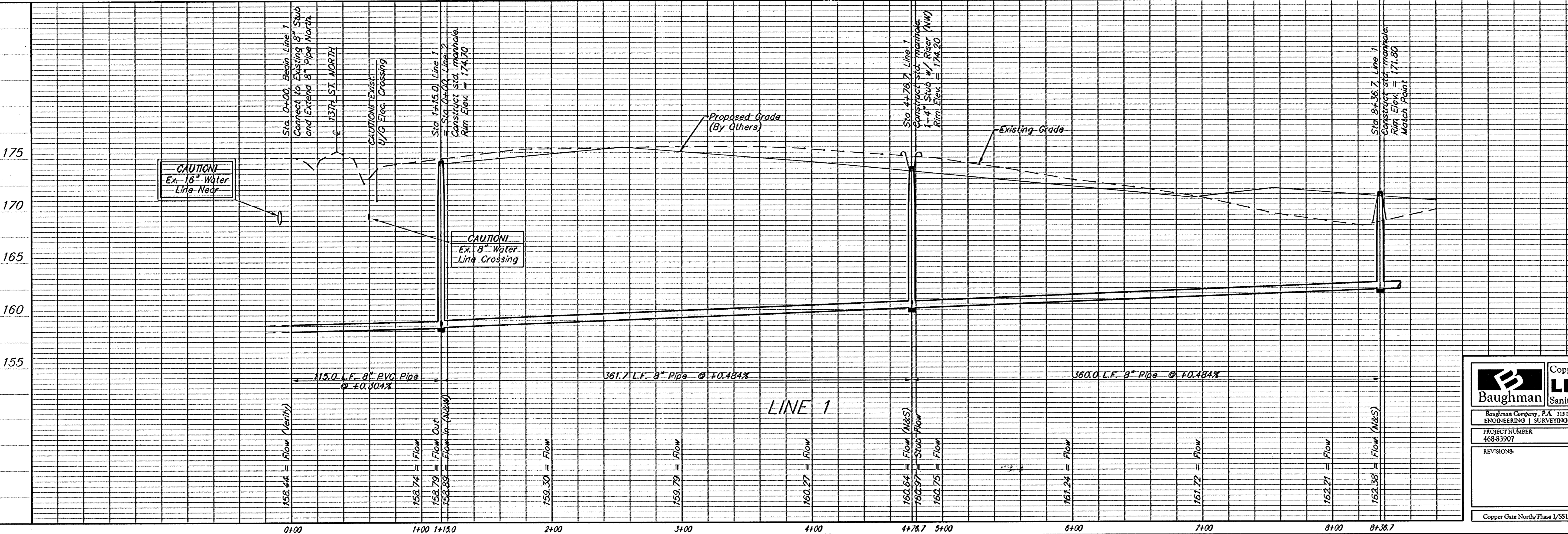
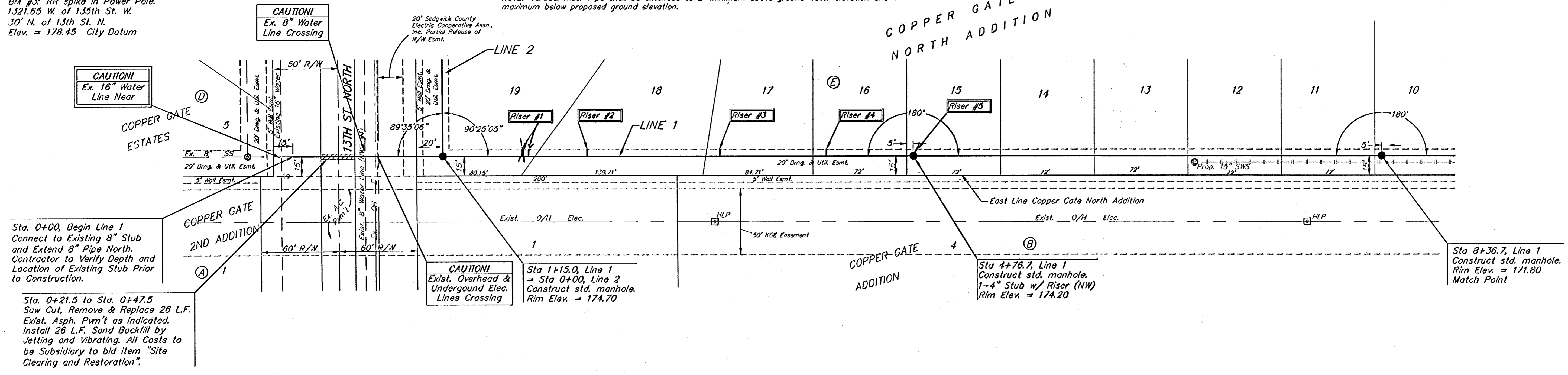
BM #3: RR spike in Power Pole. 1321.65 W. of 135th St. W. 30' N. of 13th St. N. Elev. = 178.45 City Datum

SEWER SERVICE TABLE

NUMBER	TYPE	LOCATION			FOR INFORMATION ONLY	
		LOT NO.	BLOCK NO.	LINE NO.	STATION/DIRECTION	APPROXIMATE LENGTH 4" PIPE
1	8" X 4" Tee	19	E	1	1+78.7/L. 82.6	11' 5"
2	8" X 4" Tee	18	E	1	2+28/L. 25.2	11.5'
3	8" X 4" Tee	17	E	1	3+28/L. 27.2	11.5'
4	8" X 4" Tee	16	E	1	4+10/L. 11.8	9'
5	4" Stub	15	E	1	4+78.7/L. 75.4	8'

NOTE: Vertical Riser Pipe shall be extended to 2' minimum above ground water elevation and 4' maximum below proposed ground elevation.

Scale: 1" = 40' Horizontal
1" = 5' Vertical
• = Iron



Baughman Sanitary Sewer Improvements

Copper Gate North Addition - Phase I
LINE 1

PROJECT NUMBER: 4683907
DESIGN: NBW
DRAWN: TMS/JAK
APPROVED: DATE: 5/03/05

REVISIONS:

SCALE: Noted
SHEET: 2 OF 20

Copper Gate North/Phase I/SS1.dwg 05-02-E160