

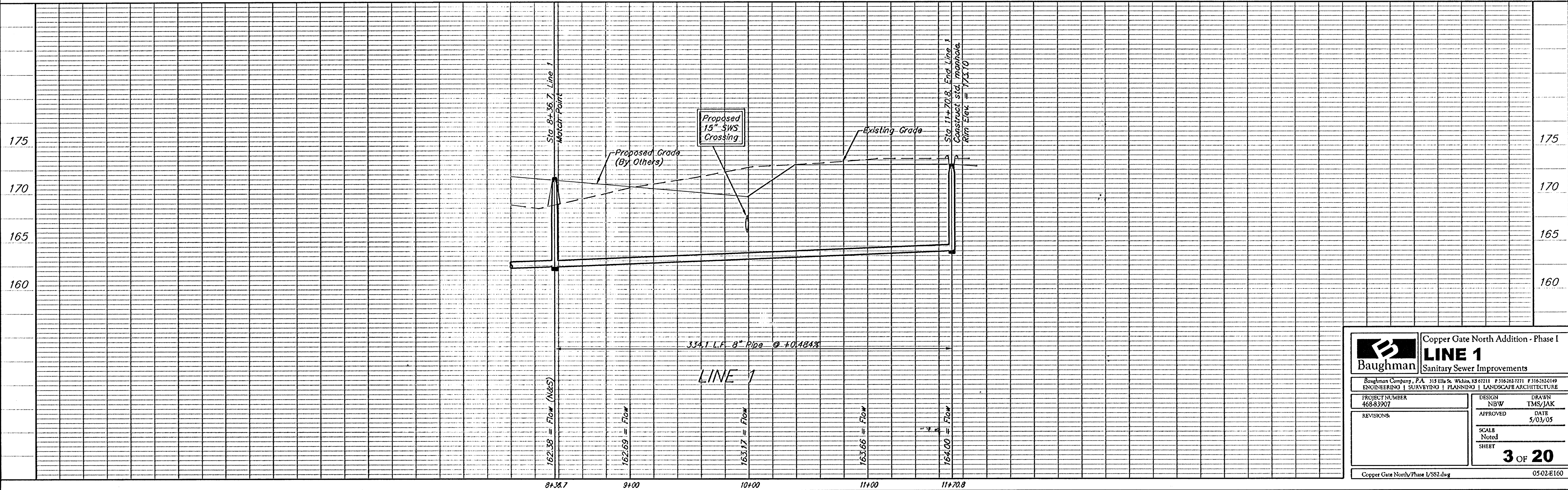
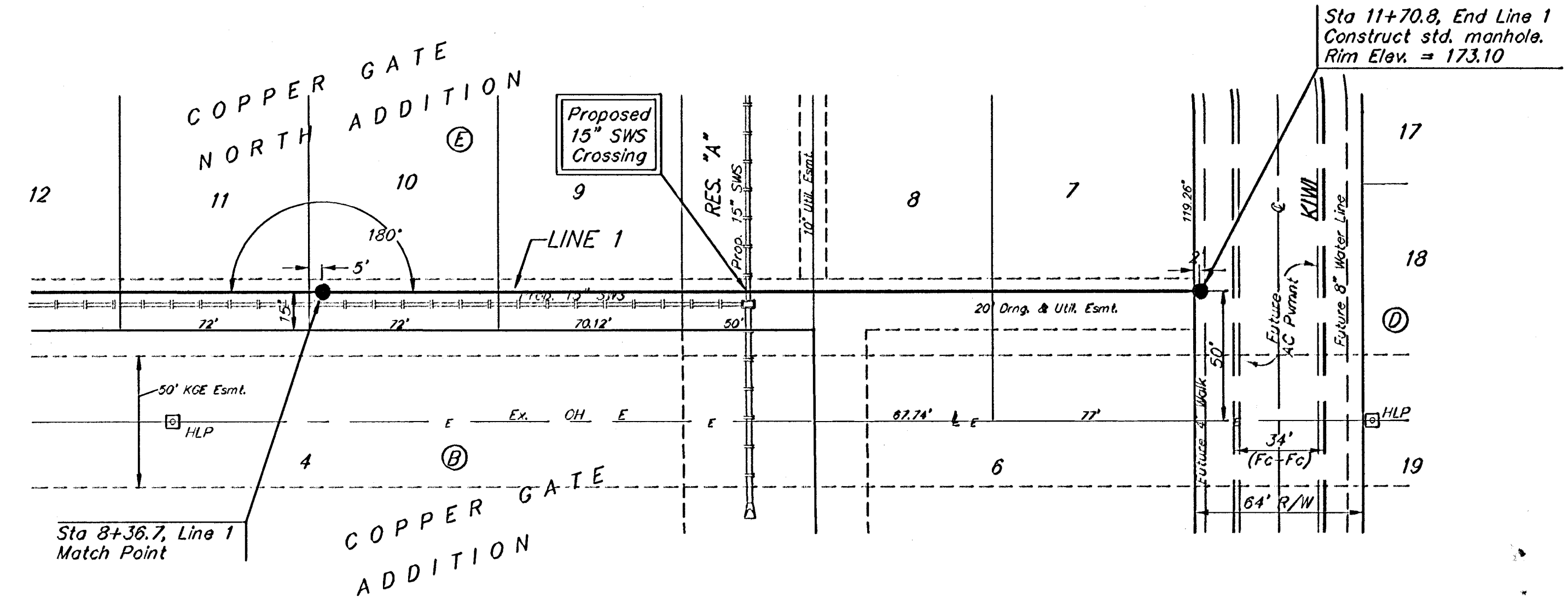
**BENCHMARKS:**

BM #1: C.O.W. disc at SW corner of intersection.  
30.00'± S. of CL of 13th St. N.  
35.00'± W. of CL of 135th St. W.  
Elev. = 168.25 City Datum

BM #2: Small RR spike in 4th HLP  
W. of 135th St. W. on south side of 13th St. N. (N. face of HLP).  
Elev. = 179.24 City Datum

BM #3: RR spike in Power Pole.  
1321.65 W. of 135th St. W.  
30' N. of 13th St. N.  
Elev. = 178.45 City Datum

Scale: 1" = 40' Horizontal  
1" = 5' Vertical  
• = Iron



	Copper Gate North Addition - Phase I	
	<b>LINE 1</b>	
Sanitary Sewer Improvements		
<small>Baughman Company, P.A. 315 Ellis St. W. Suite 203 #1111 P 316-523-1111 F 316-523-1149 ENGINEERING   SURVEYING   PLANNING   LANDSCAPE ARCHITECTURE</small>		
PROJECT NUMBER 468-83907	DESIGN NBW	DRAWN TMS/JAK
REVISIONS:	APPROVED	DATE 5/03/05
	SCALE Noted	SHEET
	<b>3 OF 20</b>	
Copper Gate North/Phase I/SS2.dwg		0502-E160