

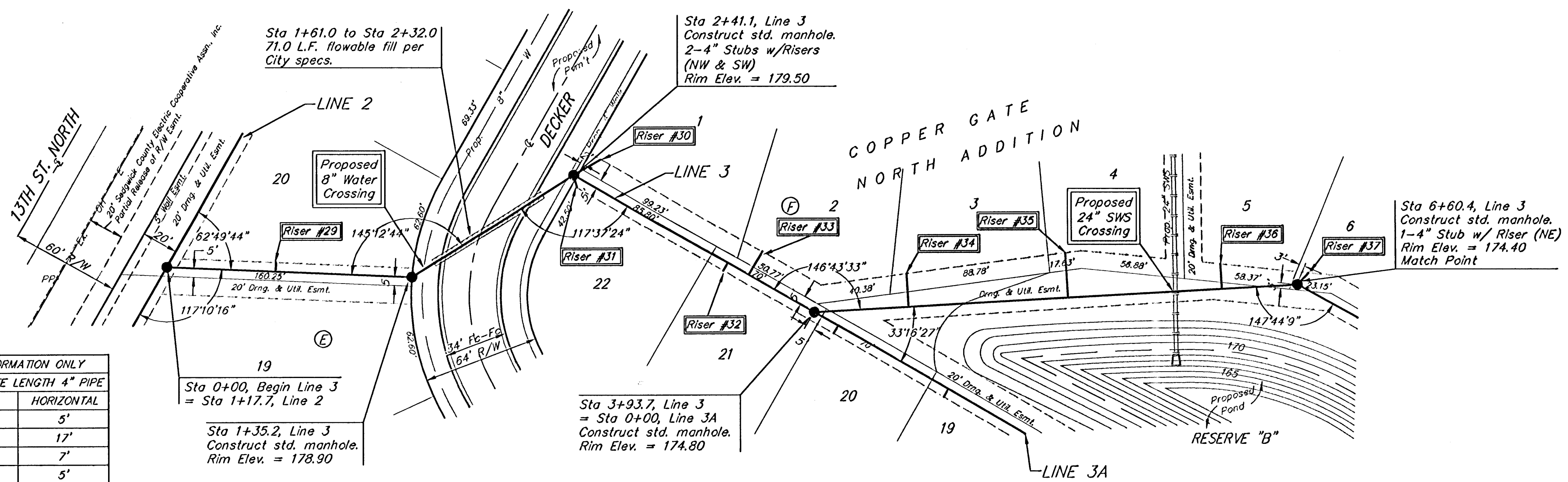
**BENCHMARKS:**

BM #1: C.O.W. disc at SW corner of intersection.  
30.00± S. of CL of 13th St. N.  
35.00± W. of CL of 135th St. W.  
Elev. = 168.25 City Datum

BM #2: Small RR spike in 4th HLP W. of 135th St. W. on south side of 13th St. N. (N. face of HLP).  
Elev. = 179.24 City Datum

BM #3: RR spike in Power Pole. 1321.65 W. of 135th St. W. 30' N. of 13th St. N.  
Elev. = 178.45 City Datum

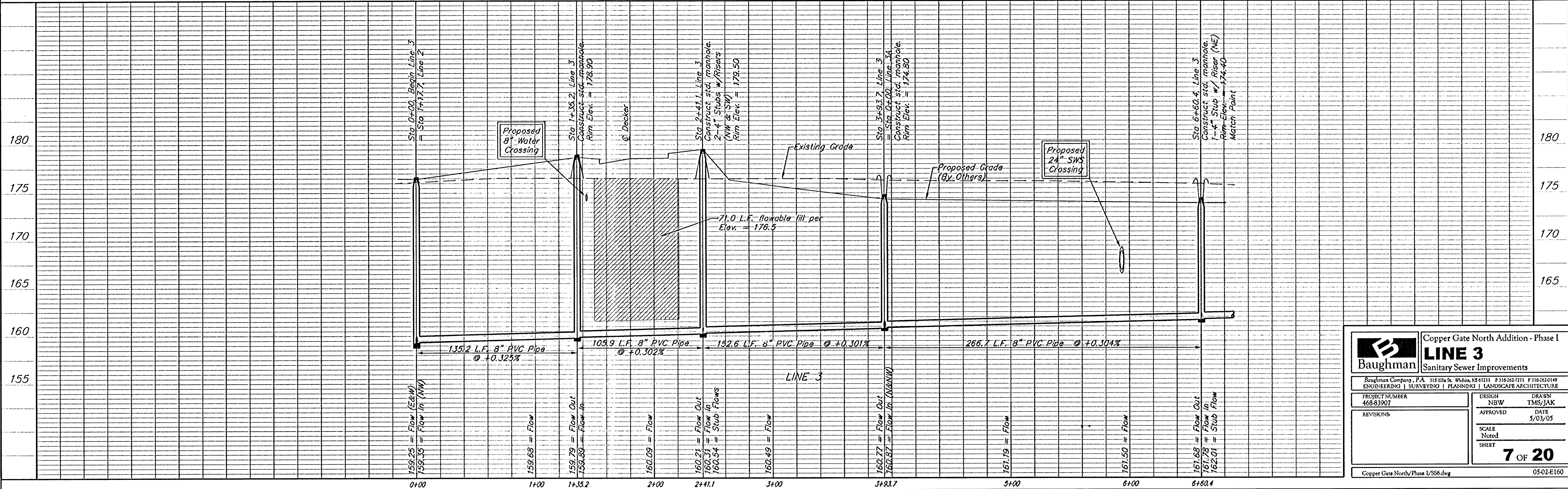
Scale: 1" = 40' Horizontal  
1" = 5' Vertical  
• = Iron



**SEWER SERVICE TABLE**

NUMBER	TYPE	LOCATION			FOR INFORMATION ONLY	
		LOT NO.	BLOCK NO.	LINE NO.	STATION/DIRECTION	APPROXIMATE LENGTH 4" PIPE VERTICAL HORIZONTAL
29	8" X 4" Tee	20	E	J	0+88/Lt. 10.4	13' 5'
30	4" Stub	1	F	J	2+4+1/Lt. 4.3	14.5' 17'
31	4" Stub	22	F	J	2+4+1/Rt. 4.3	14.5' 7'
32	8" X 4" Tee	21	F	J	3+40/Rt. 36.9	9.5' 5'
33	8" X 4" Tee	2	F	J	3+53/Lt. 51.9	9.5' 15'
34	8" X 4" Tee	3	F	J	4+40/Lt. 40.1	8.5' 18' 17'
35	8" X 4" Tee	4	F	J	5+34/Lt. 38.10	8.0' 25'
36	8" X 4" Tee	5	F	J	6+10/Lt. 19.10	7.5' 13' 12'
37	4" Stub	6	F	J	6+60+1/Lt. 1.1	7' 8' 10'

NOTE: Vertical Riser Pipe shall be extended to 2' minimum above ground water elevation and 4' maximum below proposed ground elevation.



**Baughman** Engineering, P.A.  
Copper Gate North Addition - Phase I  
**LINE 3**  
Sanitary Sewer Improvements

PROJECT NUMBER: 468-83907  
DESIGN: NBW  
DRAWN: TMS/JAK  
APPROVED: DATE: 5/03/05  
SCALE: Noted  
SHEET: 7 OF 20

Copper Gate North/Phase I/SS6.dwg 05-02-E160