

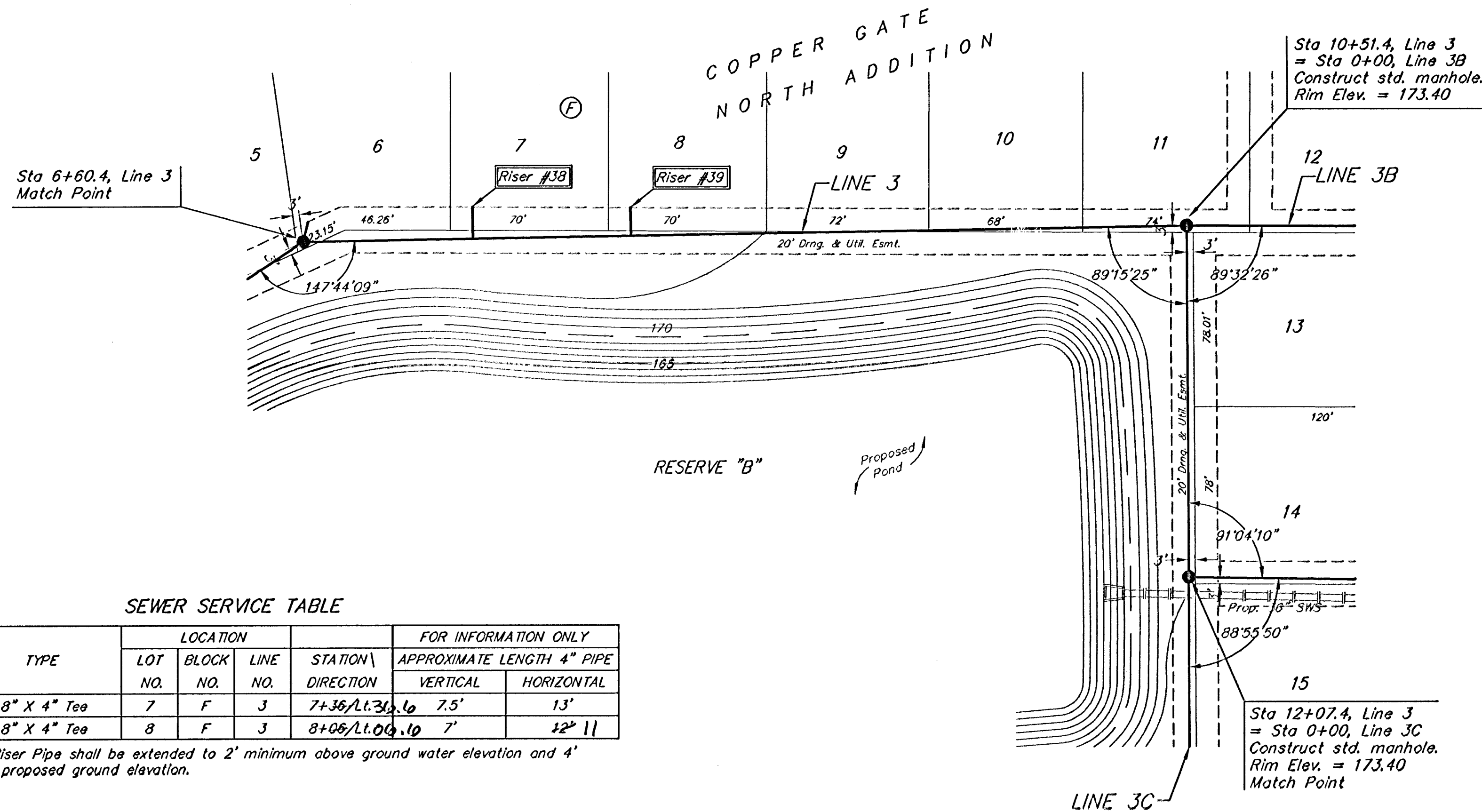
BENCHMARKS:

BM #1: C.O.W. disc at SW corner of intersection.
30.00'± S. of CL of 13th St. N.
35.00'± W. of CL of 135th St. W.
Elev. = 168.25 City Datum

BM #2: Small RR spike in 4th HLP
W. of 135th St. W. on south side
of 13th St. N. (N. face of HLP).
Elev. = 179.24 City Datum

BM #3: RR spike in Power Pole.
1321.65 W. of 135th St. W.
30' N. of 13th St. N.
Elev. = 178.45 City Datum

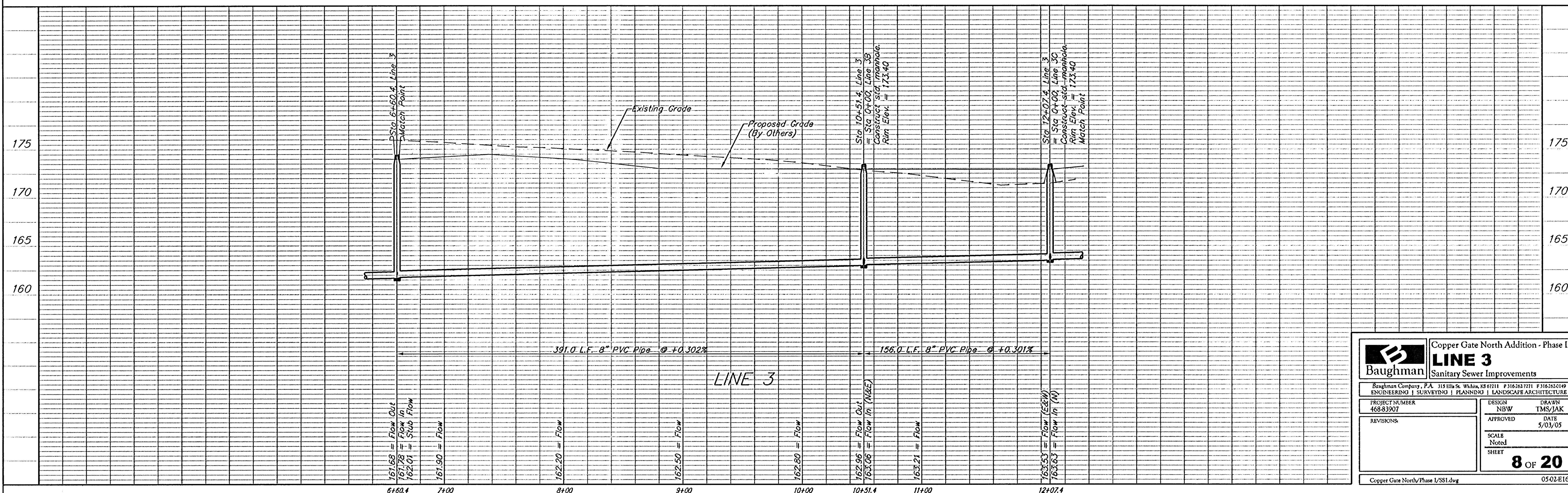
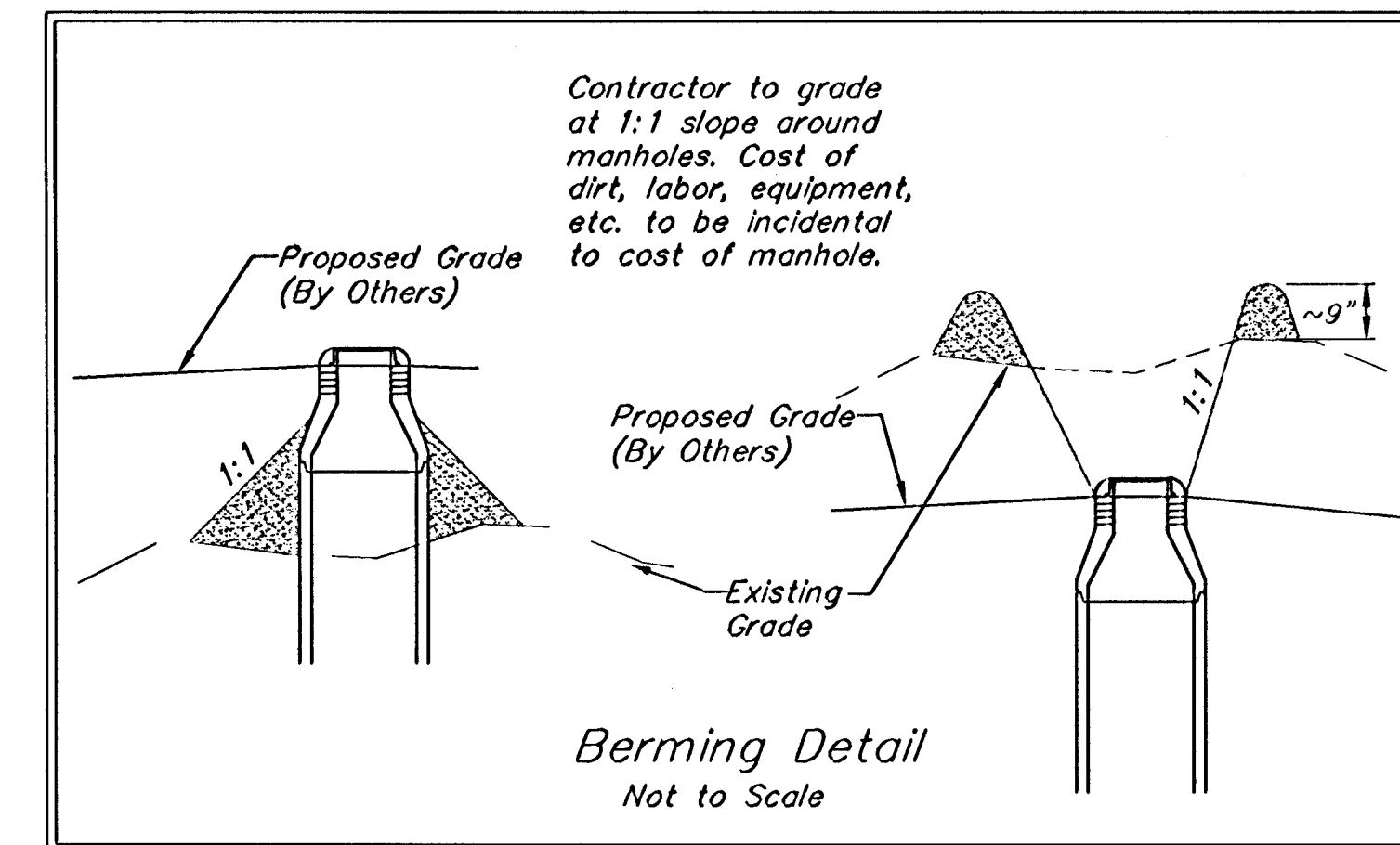
Scale: 1" = 40' Horizontal
1" = 5' Vertical
• = Iron



SEWER SERVICE TABLE

NUMBER	TYPE	LOCATION			FOR INFORMATION ONLY	
		LOT NO.	BLOCK NO.	LINE NO.	STATION DIRECTION	APPROXIMATE LENGTH 4" PIPE VERTICAL HORIZONTAL
38	8" X 4" Tee	7	F	3	7+36/L131.6	7.5' 13'
39	8" X 4" Tee	8	F	3	8+06/L100.0	7' 12' 11"

NOTE: Vertical Riser Pipe shall be extended to 2' minimum above ground water elevation and 4' maximum below proposed ground elevation.



Baughman ENGINEERING | SURVEYING | PLANNING | LANDSCAPE ARCHITECTURE

Copper Gate North Addition - Phase I
LINE 3
Sanitary Sewer Improvements

PROJECT NUMBER: 468-83907
DESIGN: NBW
DRAWN: TMS/JAK
APPROVED: DATE: 5/03/05
SCALE: Noted
SHEET: 8 OF 20

Copper Gate North/Phase I/SSI.dwg 0502-E160