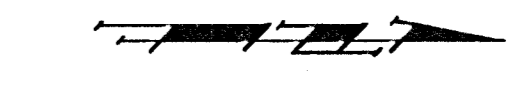


BENCHMARKS:

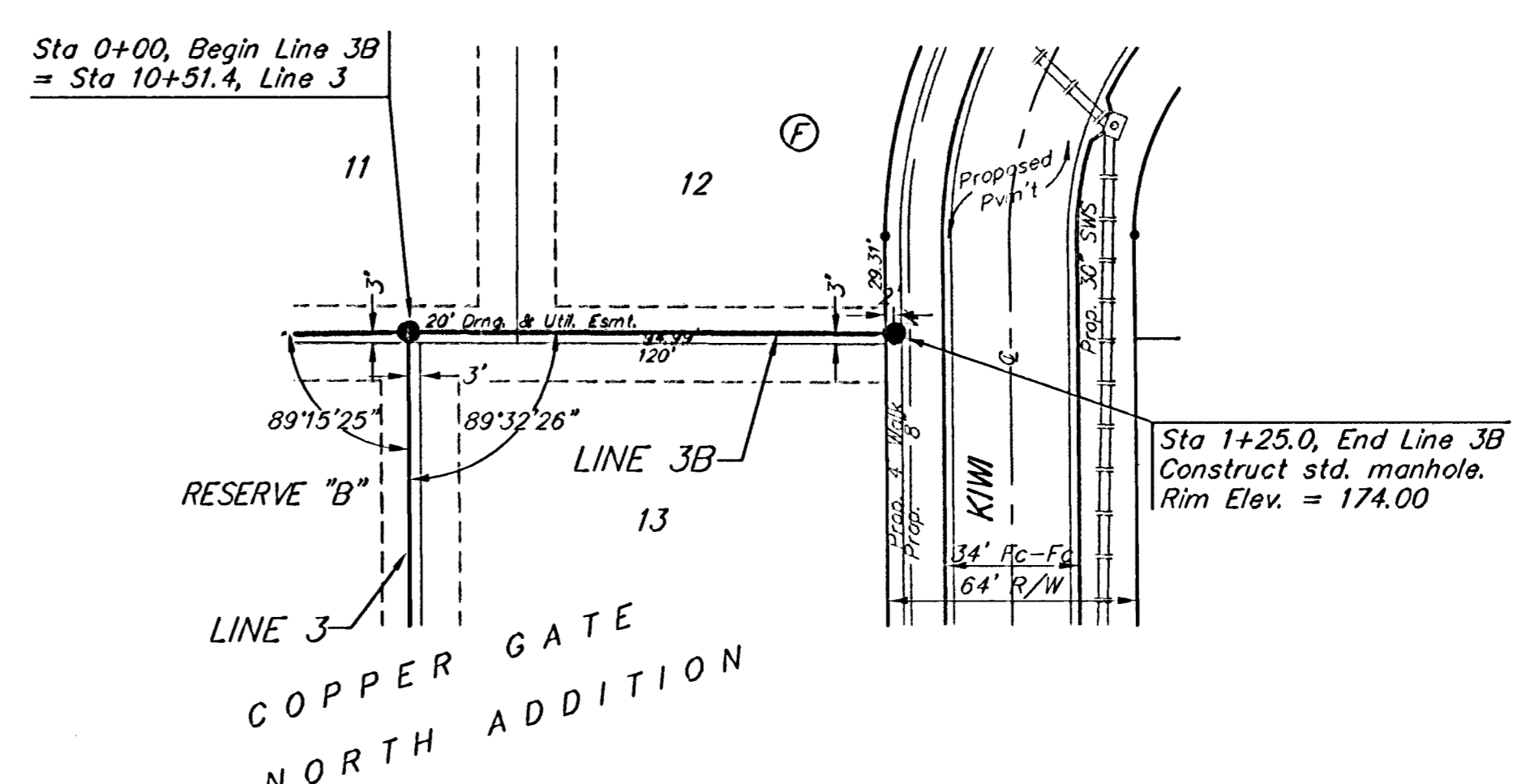
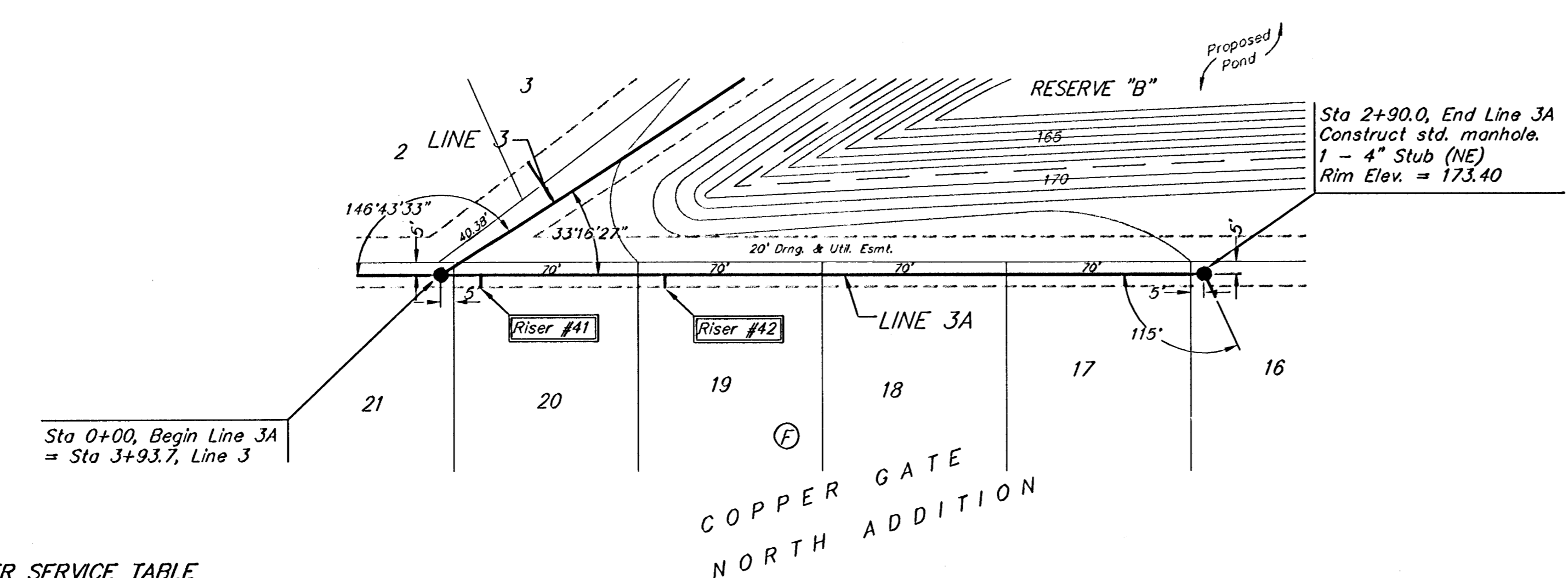
BM #1: C.O.W. disc at SW corner of intersection.
30.00'± S. of CL of 13th St. N.
35.00'± W. of CL of 135th St. W.
Elev. = 168.25 City Datum

BM #2: Small RR spike in 4th HLP
W. of 135th St. W. on south side of 13th St. N. (N. face of HLP).
Elev. = 179.24 City Datum

BM #3: RR spike in Power Pole.
1321.65 W. of 135th St. W.
30' N. of 13th St. N.
Elev. = 178.45 City Datum



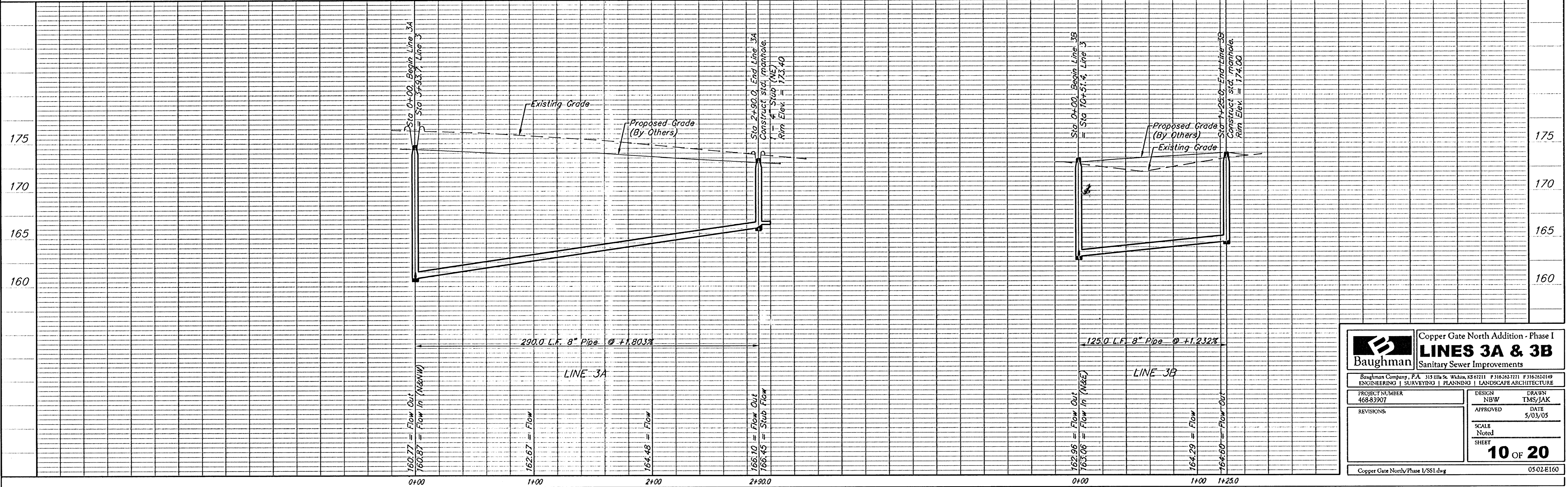
Scale: 1" = 40' Horizontal
1" = 5' Vertical
• = Iron



SEWER SERVICE TABLE

NUMBER	TYPE	LOCATION				FOR INFORMATION ONLY	
		LOT NO.	BLOCK NO.	LINE NO.	STATION\ DIRECTION	APPROXIMATE LENGTH 4" PIPE	VERTICAL
41	8" X 4" Tee	20	F	3A	0+15/RL	8'	5'
42	8" X 4" Tee	19	F	3A	0+85/RL	6.5'	5'

NOTE: Vertical Riser Pipe shall be extended to 2' minimum above ground water elevation and 4' maximum below proposed ground elevation.



Baughman Copper Gate North Addition - Phase I
LINES 3A & 3B
Sanitary Sewer Improvements

PROJECT NUMBER: 468-83907
DESIGN: NBW
DRAWN: TMS/JAK
APPROVED: [Signature]
DATE: 5/03/05

REVISIONS:

SCALE: Noted
SHEET: 10 OF 20

Copper Gate North/Phase I/SSI.dwg 05-02-E160