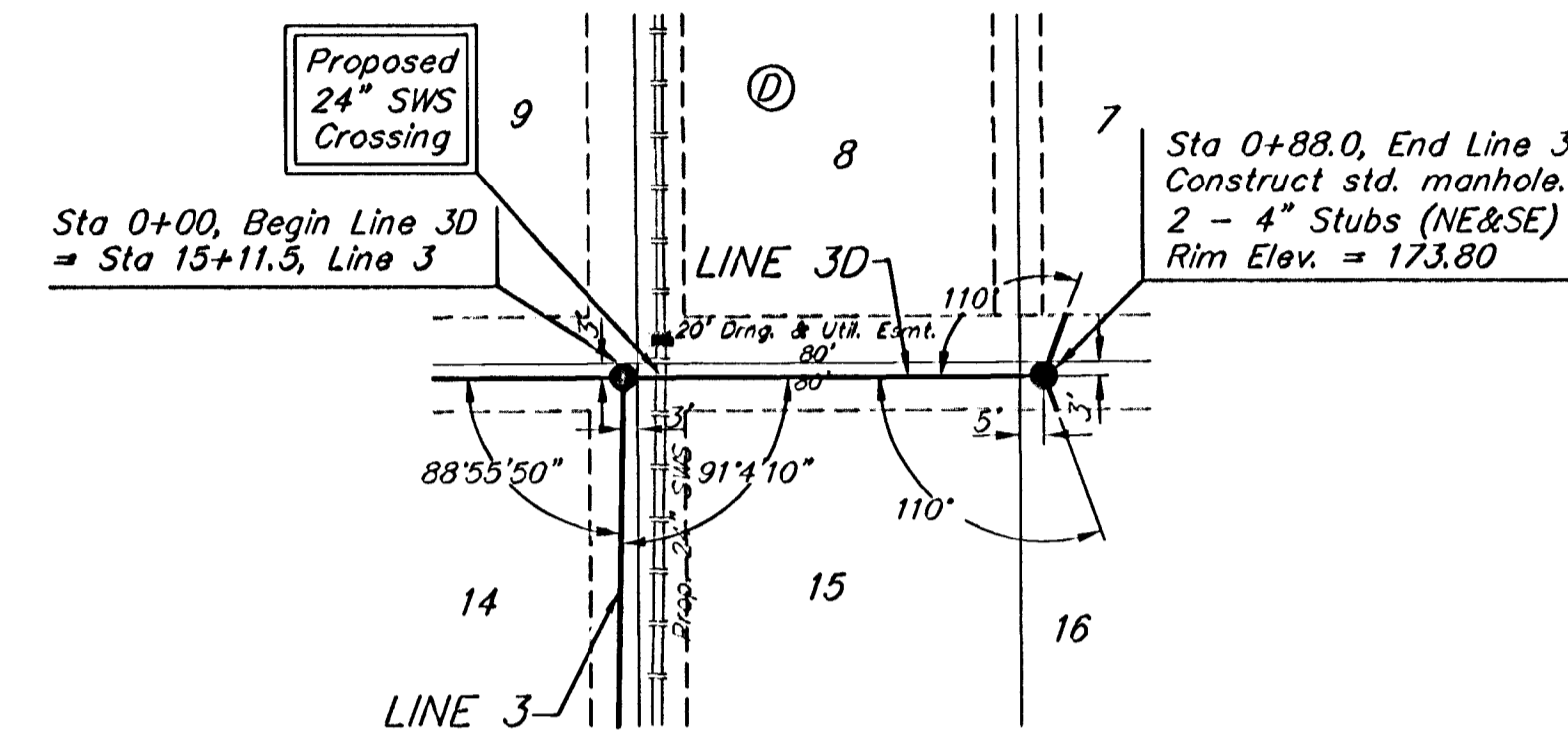
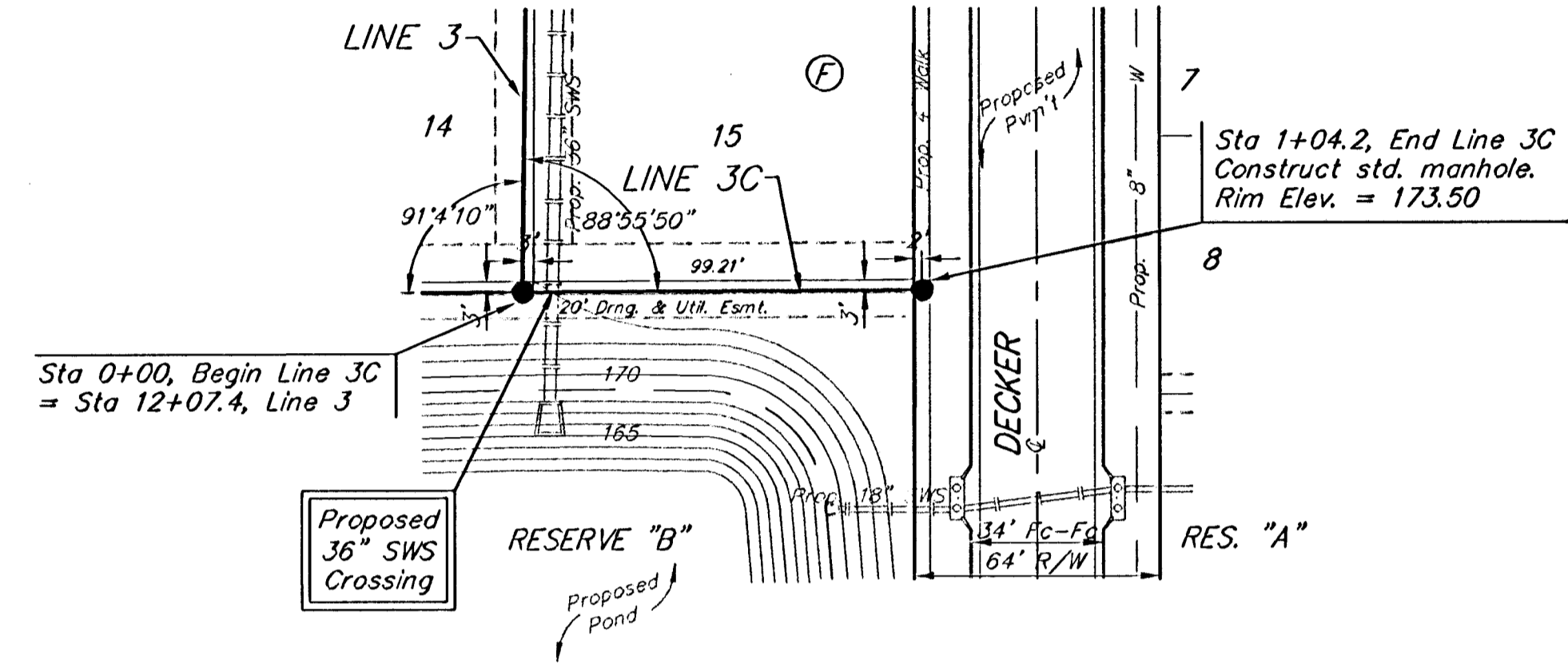


BENCHMARKS:

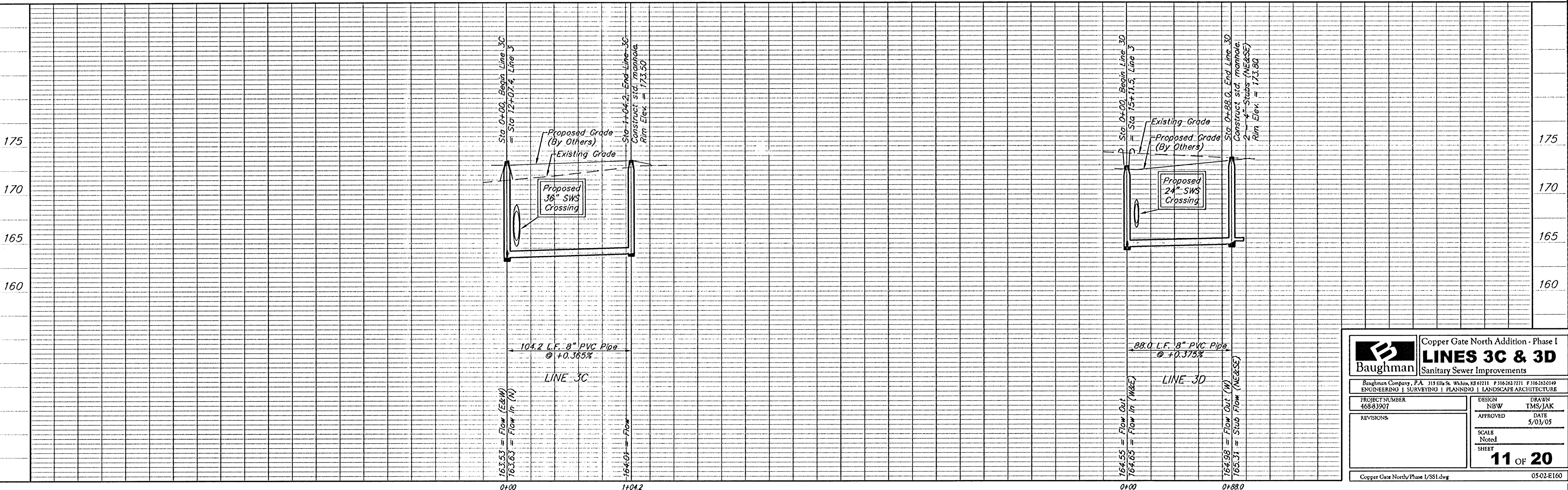
BM #1: C.O.W. disc at SW corner of intersection.
 30.00'± S. of CL of 13th St. N.
 35.00'± W. of CL of 135th St. W.
 Elev. = 168.25 City Datum

BM #2: Small RR spike in 4th HLP
 W. of 135th St. W. on south side
 of 13th St. N. (N. face of HLP).
 Elev. = 179.24 City Datum

BM #3: RR spike in Power Pole.
 1321.65 W. of 135th St. W.
 30' N. of 13th St. N.
 Elev. = 178.45 City Datum



Scale: 1" = 40' Horizontal
 1" = 5' Vertical
 • = Iron



	Copper Gate North Addition - Phase I	
	LINES 3C & 3D	
Sanitary Sewer Improvements		
<small>Baughman Company, P.A. 315 Ellis & Weik, KS 67111 P 3162627211 F 316262169 ENGINEERING SURVEYING PLANNING LANDSCAPE ARCHITECTURE</small>		
PROJECT NUMBER 468-83907	DESIGN NBW	DRAWN TMS/JAK
REVISIONS:	APPROVED	DATE 5/03/05
	SCALE Noted	SHEET
	11 OF 20	
Copper Gate North/Phase I/SSI.dwg		0502-E160