

Lat.1, Main 22, S.W.I.  
**SANITARY SEWER IMPROVEMENTS**  
 to serve  
**BLUE LAKE ADDITION - PHASE I**  
 CITY OF WICHITA, KANSAS

James L. Armour, P.E. Acting City Engineer

Project Number

**468-83862**

O.C.A. Number

**744086**

**Benchmarks**

City of Wichita Benchmark located  
 41.60' North and 69.00' East of the  
 Centerlines of Hoover and MacArthur  
 (39th St. South)

Elevation = 121.22 (City Datum)

City of Wichita Benchmark located  
 at East end of Bridge over the Big  
 Ditch on MacArthur in the West bound  
 lane.

Elevation = 116.52 (City Datum)

**GENERAL NOTES:**

1. Contractor will be required to provide notice to utility companies a minimum of twenty-four (24) hours prior to any excavation, as follows:

Kansas One-Call 687-2470

The Contractor must notify the following in case of an emergency:

- Cox Communications 262-4270
- Kansas Gas Service 1-888-482-4950
- Westar Energy 383-8650
- Aquila Energy 1-888-482-4950
- Southwestern Bell 268-2245
- City of Wichita Water Dept. 268-4563
- City of Wichita Sewer Maint. 268-4024
- City of Wichita Storm Sewer Maint. 268-4090
- City of Wichita Traffic Maint. 268-4034
- Conoco Pipeline Co. 1-800-231-2551
- Williams Pipeline Co. 529-6600
- Phillips Pipeline Co. 1-800-766-8230

2. Underground utility service lines and overhead utility pole lines are to be adjusted as necessary by others prior to construction unless the plans specifically call for their adjustment by the Contractor or unless the plans specifically identify a utility to be adjusted by its owner during construction. Existing utilities and their location, as shown on the plans, represent the best information obtainable for design. The Contractor will be required to work around existing utilities within the right-of-way which do not conflict with proposed construction.

3. Trees and shrubs in public right-of-way which are in direct conflict with proposed new construction shall be removed by the Contractor with the Engineer's approval. Trees and shrubs which are not in direct conflict with proposed new construction shall be saved and protected from damage.

4. The Contractor shall give all property owners and/or tenants of developed property abutting the construction of this project a minimum of ten (10) days advance notice prior to start of construction.

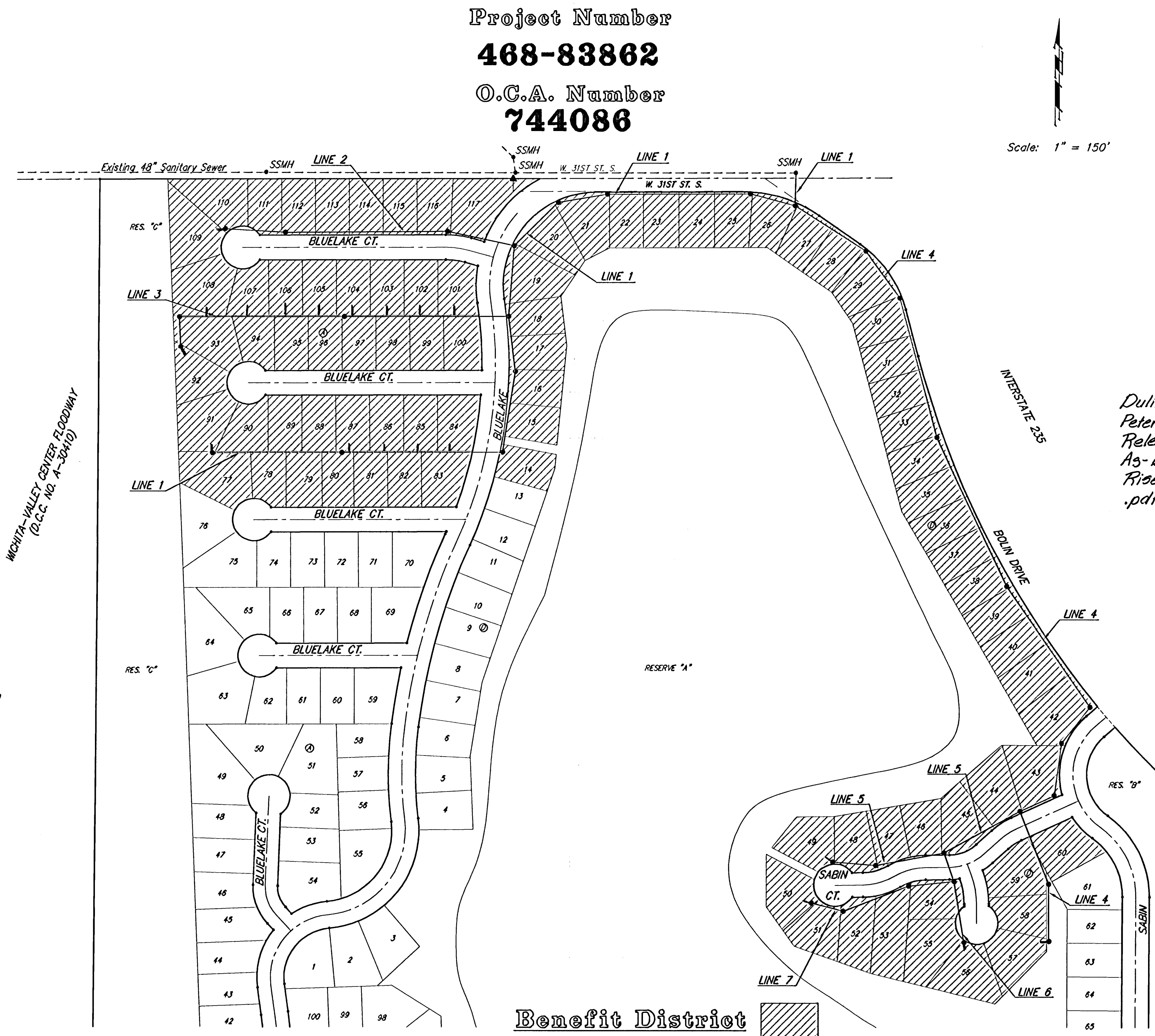
5. The Contractor shall be responsible for preserving property irons. The Contractor will be required to re-establish any property irons which are damaged or destroyed by his construction operations. Such irons shall be reestablished by a licensed land surveyor in accordance with state laws.

6. When connecting to existing manhole or stub, the contractor shall reshape manhole bottom or adjust the existing stub's alignment or elevation as necessary. Cost shall be subsidiary to project.

7. The Contractor shall be responsible for maintaining continuous flow of sewage through construction. Contractor's proposed method for maintaining sewage flow shall be approved by the Engineer. Cost of maintaining flow of sewage through construction will not be paid for directly and this cost shall be considered as subsidiary to the other pay items of work.

8. Easements shall be graded with this project. All areas disturbed during construction shall be seeded at 300 lbs./acre with Rye Grass immediately following construction in that area. Contractor shall prepare ground per City Specifications. All costs associated with seeding shall be included in bid item, "Project Seeding." All excess material to remain on-site and stockpiled at a location to be determined by the engineer.

9. Construction of this project shall start no later than 10/25/04.

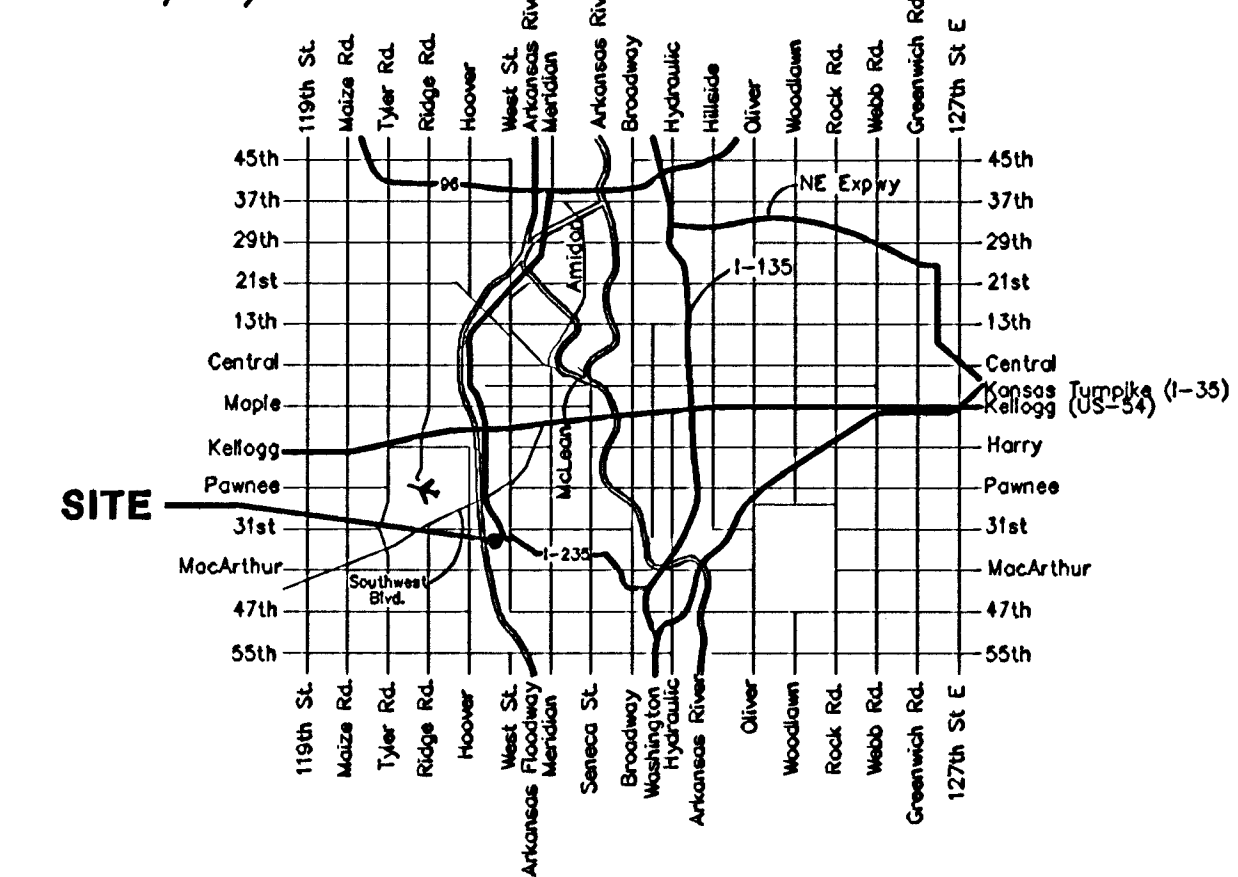


Scale: 1" = 150'

**Sheet Index**

Title Sheet	1
Line 1	2-4
Line 2	5
Line 3	6
Line 4	7-8
Lines 5, 6 & 7	9
Easement Grading Plans	10-13
Vertical Riser Detail	14
Standard Manhole Detail	15
Shallow Manhole Detail	16
Ring & Cover Detail	17
Erosion Control BMP's	18-21
Copy of Plat	22

Duling Construction Co., Inc. - Contractor  
 Peterson/Hartman, City- Inspectors  
 Released 9/9/05  
 As-Built  
 Risers + Stubs  
 .pdf by JDL 10/24/05



**Vicinity Map**



Benefit District

**Baughman**  
 Baughman Company, P.A. 315 Ella St. Wichita, KS 67211 P 316-262-7271 F 316-262-0149  
 ENGINEERING | SURVEYING | PLANNING | LANDSCAPE ARCHITECTURE