

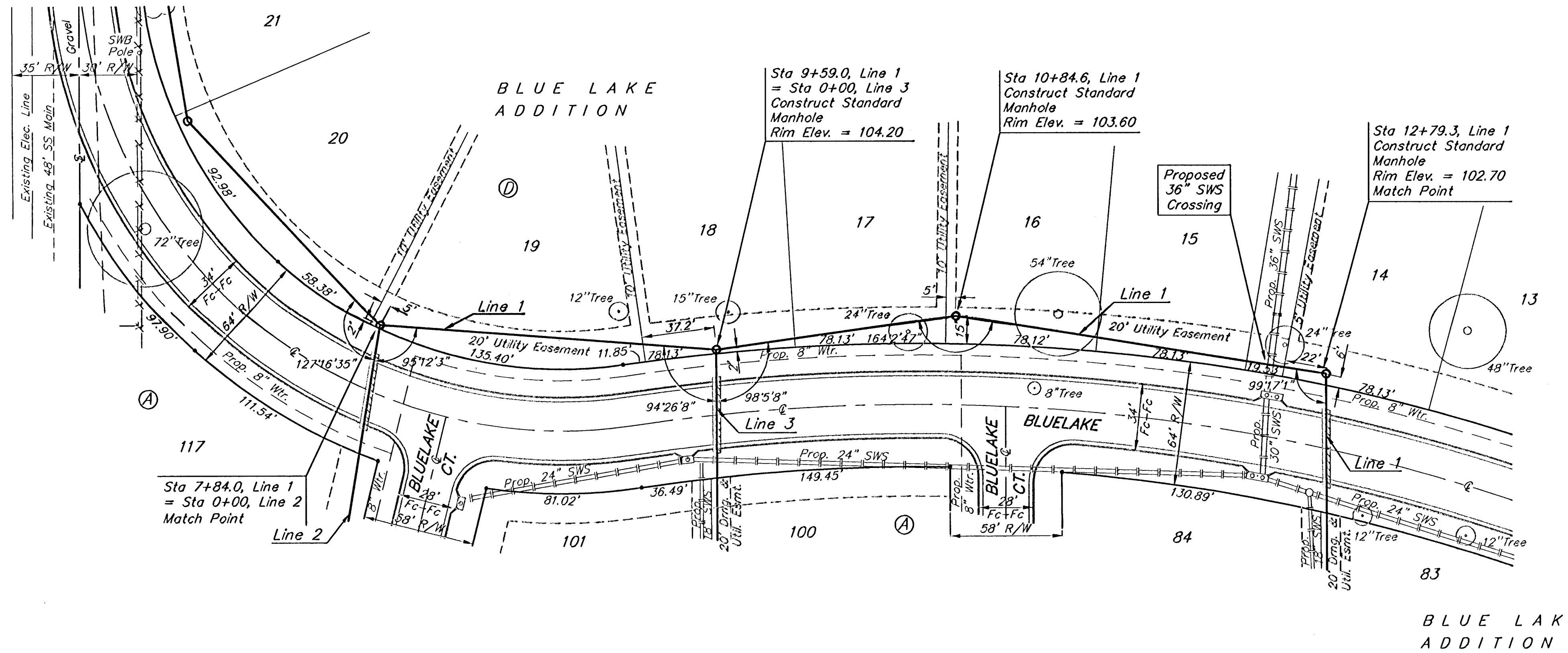
Benchmarks:

City of Wichita Benchmark located 41.60' North and 69.00' East of the Centerlines of Hoover and MacArthur (39th St. South)

Elevation = 121.22 (City Datum)

City of Wichita Benchmark located at East end of Bridge over the Big Ditch on MacArthur in the West bound lane.

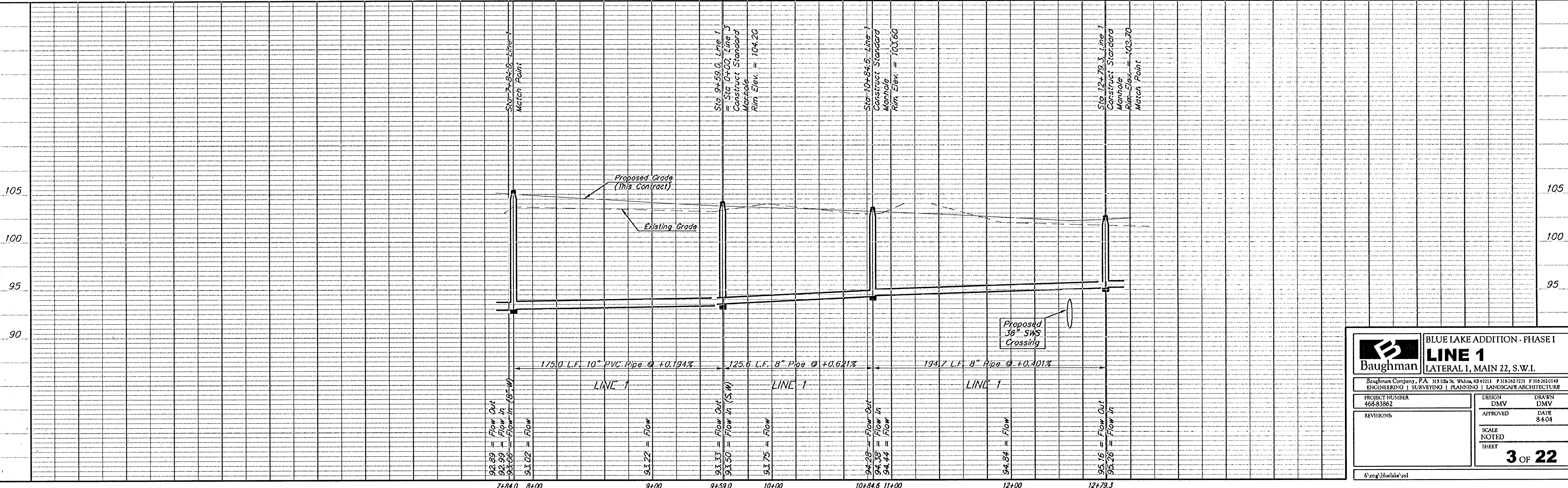
Elevation = 116.52 (City Datum)



Scale: 1" = 40' Horizontal
1" = 5' Vertical
• = Iron

All excavation for Line 1 from Sta. 0+77.3 to Sta. 12+79.3 shall be sand backfilled to within two feet of existing grade. The sand shall be vibrated and water jettted during backfilling. Cost shall be incidental to pipe cost.

Note: Contractor shall Remove Trees only as Necessary to Construct Sanitary Sewer Line. Cost of Tree Removal shall be Included in Bid Item "Site Clearing and Restoration."



	BLUE LAKE ADDITION - PHASE I	
	LINE 1	
LATERAL 1, MAIN 22, S.W.L.		
<small>Baughman Company, P.A. 313 1/2 St. Wichita, KS 67211 P 316-2627271 F 316-262149 ENGINEERING SURVEYING PLANNING LANDSCAPE ARCHITECTURE</small>		
PROJECT NUMBER 468-83862	DESIGN DMV	DRAWN DMV
REVISIONS	APPROVED	DATE 8-4-34
SCALE NOTED		SHEET 3 OF 22
<small>0:\eng\bluelake\ss1</small>		