

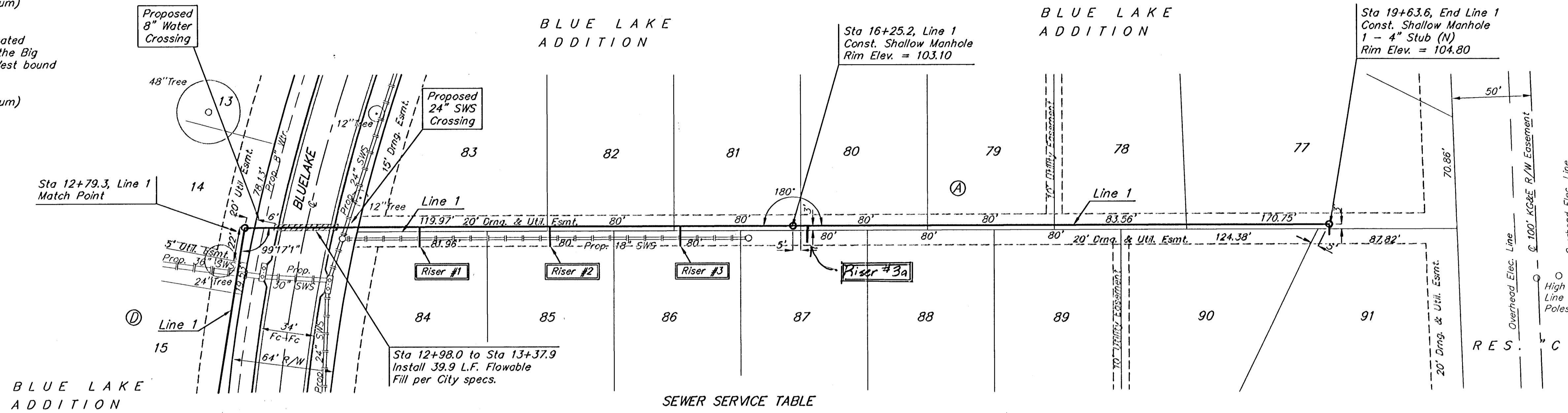
Benchmarks:

City of Wichita Benchmark located 41.60' North and 69.00' East of the Centerlines of Hoover and MacArthur (39th St. South)

Elevation = 121.22 (City Datum)

City of Wichita Benchmark located at East end of Bridge over the Big Ditch on MacArthur in the West bound lane.

Elevation = 116.52 (City Datum)

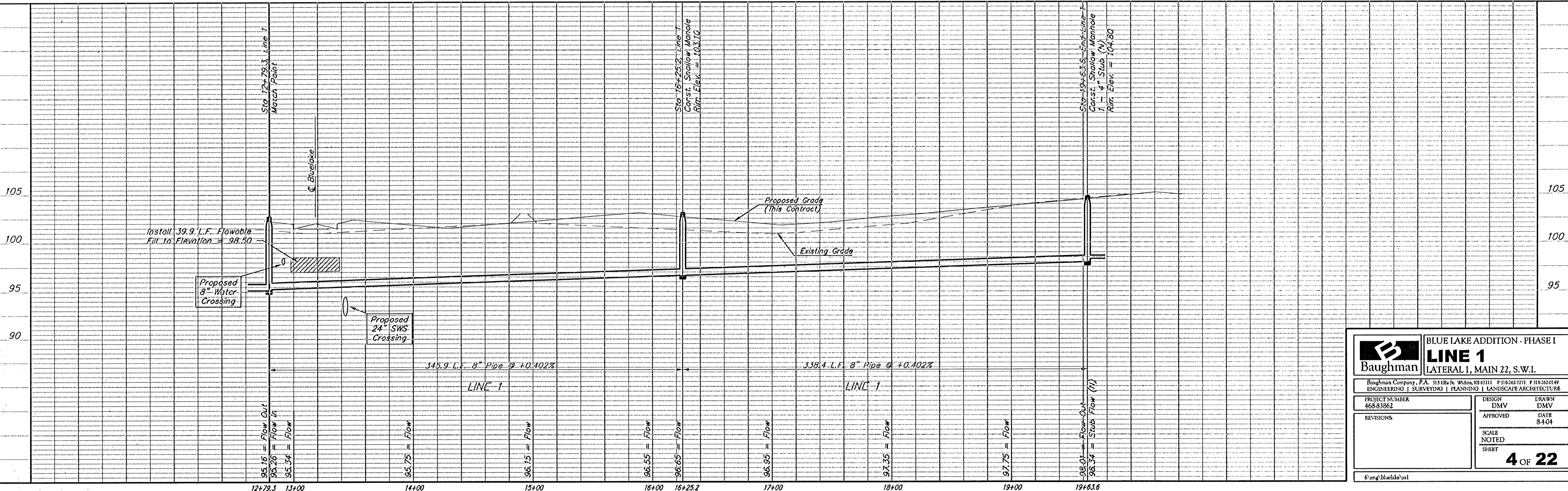


SEWER SERVICE TABLE

NUMBER	TYPE	LOCATION				FOR INFORMATION ONLY	
		LOT NO.	BLOCK NO.	LINE NO.	STATION \ DIRECTION	APPROXIMATE LENGTH 4" PIPE VERTICAL	HORIZONTAL
1	8" x 4" Tee Saddle	84	A	1	13+88/Rt. 83	2.5'	13' 12"
2	8" x 4" Tee Saddle	85	A	1	14+68/Rt. 65	2'	13' 12"
3	8" x 4" Tee Saddle	86	A	1	15+50/Rt. 44	2.5'	13' 12"
3a	8" x 4" Tee Saddle	87	A	1	16+33/Rt. 4		12'

Note: Vertical Riser Pipe shall be extended to 2' minimum above ground water elevation and 4' maximum below proposed ground elevation.

Note: Contractor shall Remove Trees only as Necessary to Construct Sanitary Sewer Line. Cost of Tree Removal shall be Included in Bid Item "Site Clearing and Restoration."



	BLUE LAKE ADDITION - PHASE I	
	LINE 1	
LATERAL 1, MAIN 22, S.W.I.		
<small>Baughman Company, P.A. 3131 E. St. Wichita, KS 67211 P 316.263.7711 F 316.263.0149 ENGINEERING SURVEYING PLANNING LANDSCAPE ARCHITECTURE</small>		
PROJECT NUMBER 468-83862	DESIGN DMV	DRAWN DMV
REVISIONS:	APPROVED	DATE 8-4-04
	SCALE NOTED	
	4 OF 22	