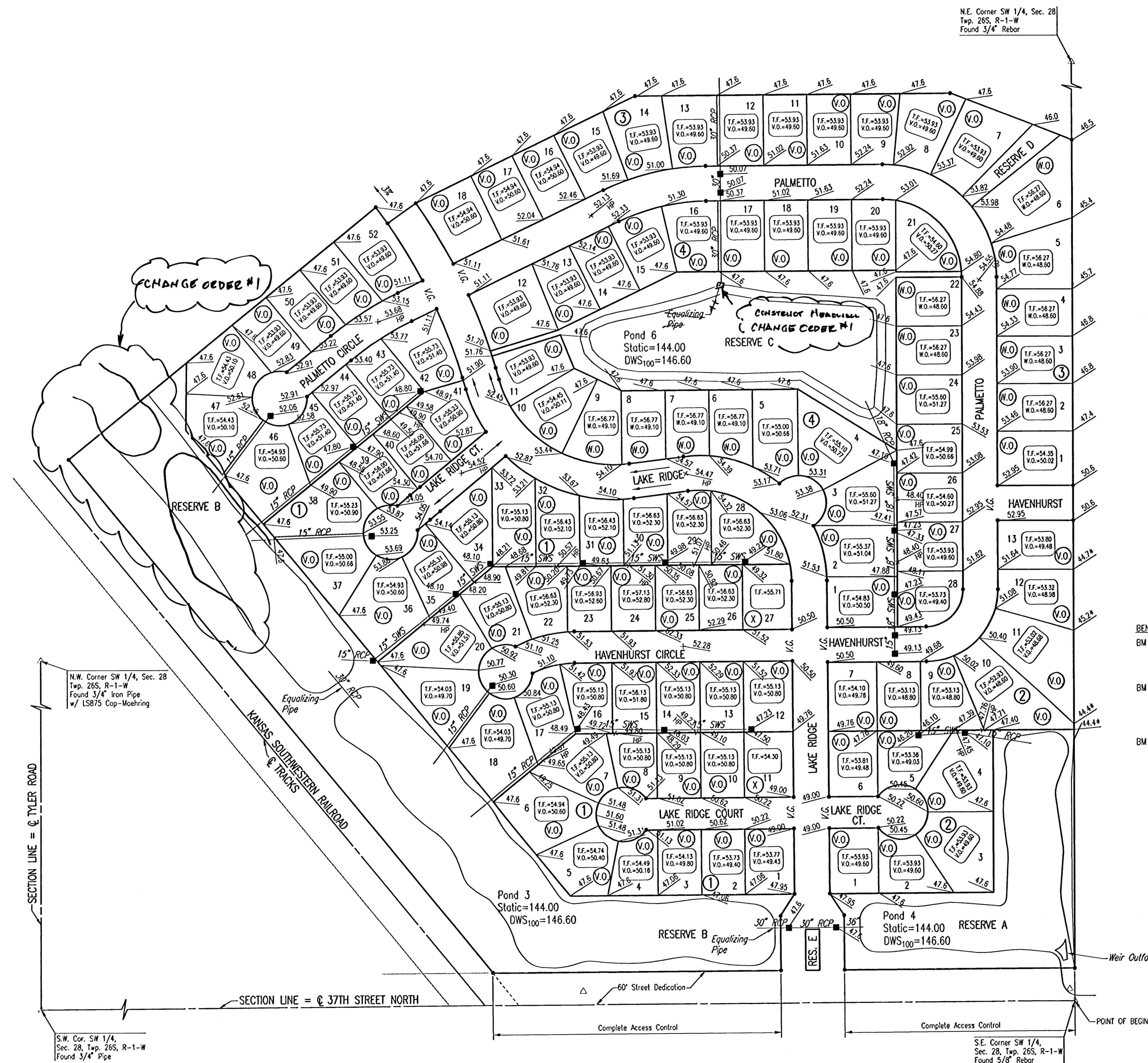
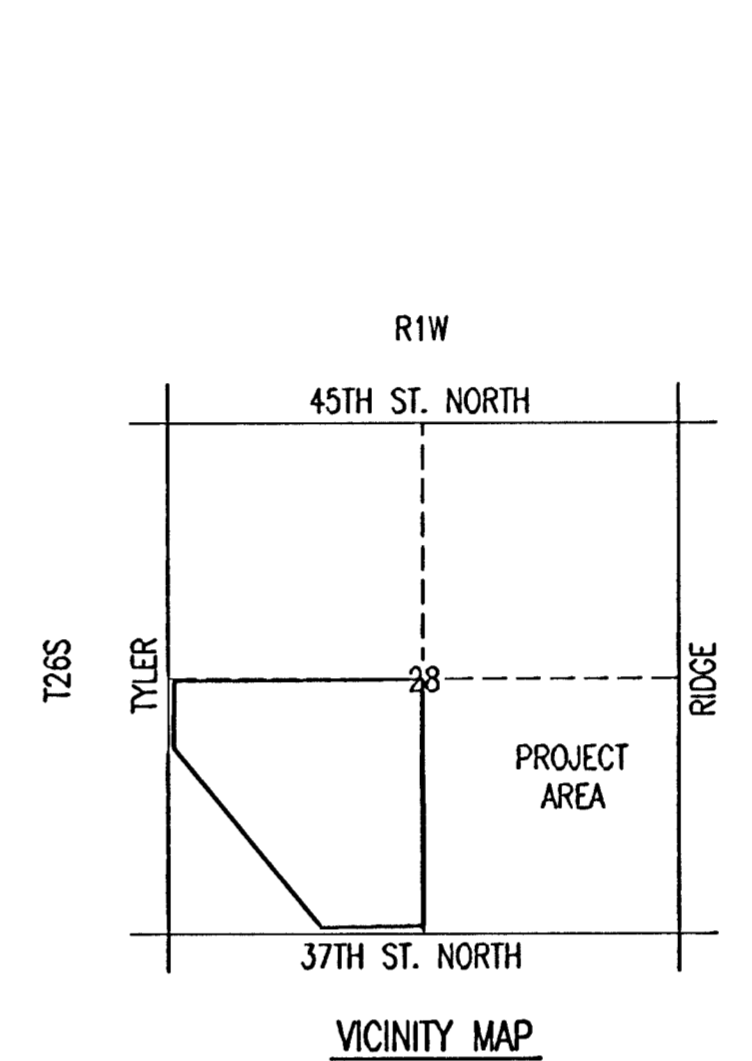


FOUR CORNER PLAN FOR AVALON PARK

AN ADDITION TO WICHITA
SEDGWICK COUNTY, KANSAS



SCALE: 1" = 100'
• = 3/4" IRON PIPE W/PEC CAP UNLESS OTHERWISE NOTED



- LEGEND**
- (X) STD. BASEMENT
 - (W.O) WALK-OUT BASEMENT
 - (V.O) VIEW-OUT BASEMENT
 - STORM WATER FLOW
 - ▲ SPOT ELEVATION
 - W.O. WALK-OUT
 - V.O. VIEW-OUT
 - T.F. TOP OF FOUNDATION

VO OR WO WAS CONSIDERED ACCEPTABLE IF THE TOP OF FOUNDATION WAS 5' OR LESS ABOVE THE PROPERTY LINE.

BENCHMARKS:

BM #50 - "T" Post, 1/2 mile E. of Tyler Rd., 14' N. of N. edge 37th St. N.
Elev.=1333.15 N.G.V.D.
Elev.=145.75 CITY DATUM

BM #51 - "T" Post, 3/8 mile E. of Tyler Rd., 14' N. of N. edge 37th St. N., E. of R.R. tracks 186'±
Elev.=1335.55 N.G.V.D.
Elev.=148.15 CITY DATUM

BM #58 - Chiseled "d" on S. end concrete headwall, E. end RCB under Tyler Rd. at 1/2 mile line, S. of K96 Highway.
Elev.=1342.03 N.G.V.D.
Elev.=154.63 CITY DATUM

MINIMUM OPENINGS	ELEVATION (N.G.V.D.)	CITY DATUM
BLOCK 1		
LOTS 1-6, 18-19	1336.0	148.6
LOTS 36-37, 46-52	1349.6	149.6
LOTS 7-17, 20-22, 33-35	1338.2	150.8
LOTS 38-45	1338.3	150.9
LOTS 23, 31-32	1339.0	151.6
LOTS 24-30	1339.7	152.3
BLOCK 2		
LOTS 1-4, 10-13	1336.0	148.6
LOTS 5-9	1336.2	148.8
BLOCK 3		
LOTS 1-6	1336.0	148.6
LOTS 7-18	1349.6	149.6
BLOCK 4		
LOTS 4-9, 22-25	1336.0	148.6
LOTS 1-3, 26-28	1336.8	149.4
LOTS 10-21	1349.6	149.6

REVISED FEBRUARY 6, 2004
REVISED DECEMBER 2, 2004
REVISED APRIL 11, 2006

Blawie
02 OCT 06
RECORD DRAWINGS

No.	Revision	By	Date
AVALON PARK 3RD STORM WATER DRAIN NO. 265 4-CORNER LOT GRADING PLAN (FOR INFORMATION ONLY) JAMES L. ARMOUR, P.E.-CITY ENGINEER CITY OF WICHITA PROJECT NO. 468-84012 Professional Engineering Consultants, P.A. 303 S. TOPEKA • WICHITA, KANSAS 67202 316-262-2691 • FAX 316-262-3003			
Designed by	BDB, BLB	Job No.	35-05258-001
Drawn by	BJS	Date	February 2005
			Sht. 6 of 35

Saved 11-21-2006 7:45:54 AM by TJS
 Plot Scale 1:100 11-21-2006 7:51:32 AM by TJS
 C:\Users\jts258\Documents\468-84012-PA\468-84012-PA.dwg