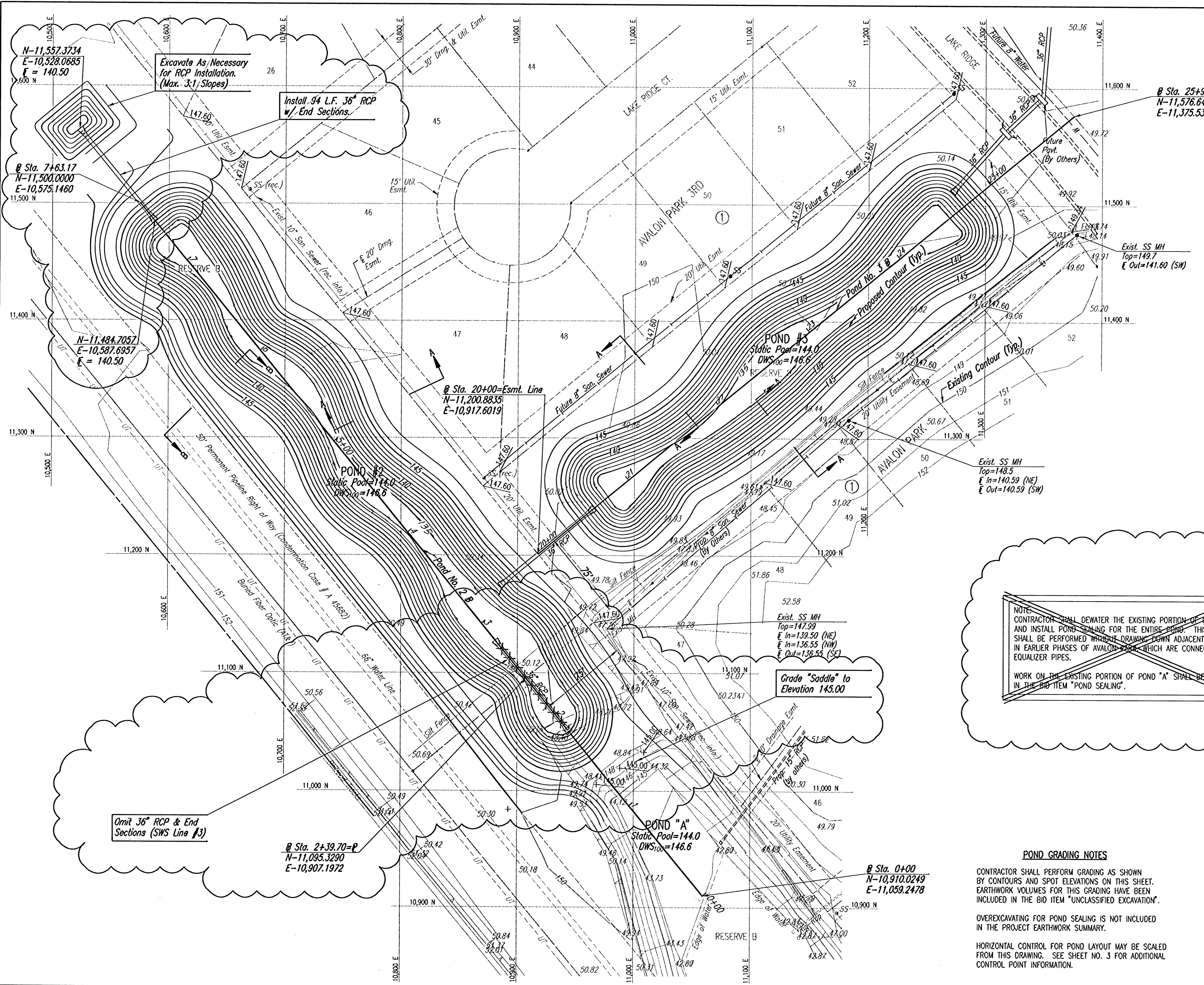


Saved: 02-17-2006 5:59:24 PM by BJS
 Plot: Scale: 1:40 02-21-2006 2:18:40 PM by JLS
 C:\2005\025258\Change Order\025258-C-0002-1-Change Order



N
 SCALE: 1"=40'
 S

NOTE:
 CONTRACTOR SHALL DEWATER THE EXISTING PORTION OF POND "A" AND INSTALL POND SEALING FOR THE ENTIRE POND. THIS WORK SHALL BE PERFORMED WITHOUT DRAINING DOWN ADJACENT PONDS IN EARLIER PHASES OF AVALON PARK 3RD, WHICH ARE CONNECTED BY EQUALIZER PIPES.
 WORK ON THE EXISTING PORTION OF POND "A" SHALL BE INCLUDED IN THE BID ITEM "POND SEALING".

POND GRADING NOTES

CONTRACTOR SHALL PERFORM GRADING AS SHOWN BY CONTOURS AND SPOT ELEVATIONS ON THIS SHEET. EARTHWORK VOLUMES FOR THIS GRADING HAVE BEEN INCLUDED IN THE BID ITEM "UNCLASSIFIED EXCAVATION".
 OVEREXCAVATING FOR POND SEALING IS NOT INCLUDED IN THE PROJECT EARTHWORK SUMMARY.
 HORIZONTAL CONTROL FOR POND LAYOUT MAY BE SCALED FROM THIS DRAWING. SEE SHEET NO. 3 FOR ADDITIONAL CONTROL POINT INFORMATION.

02 OCT 06
RECORD DRAWING

Section A-A, Section B-B, and Section C-C,
 See Sheet No. 9

1	Rev. Pond #2 limits (S. end), relocate 36" RCP	9/28/05
No.	Revision	By Date
AVALON PARK 3RD STORM WATER DRAIN NO. 265 POND NO. 2 AND 3 GRADING PLAN JAMES L. ARMOUR, P.E.—CITY ENGINEER CITY OF WICHITA PROJECT NO. 468-84012 Professional Engineering Consultants, P.A. 303 S. TOPEKA • WICHITA, KANSAS 67202 316-262-2691 • FAX 316-262-3003		
Designed by	BDB, BLB	Job No. 35-05258
Drawn by	BJS	Date February 2005
		SH. 8R of 35