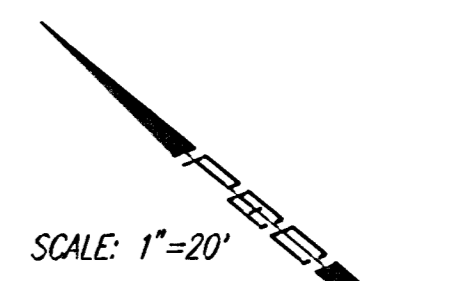
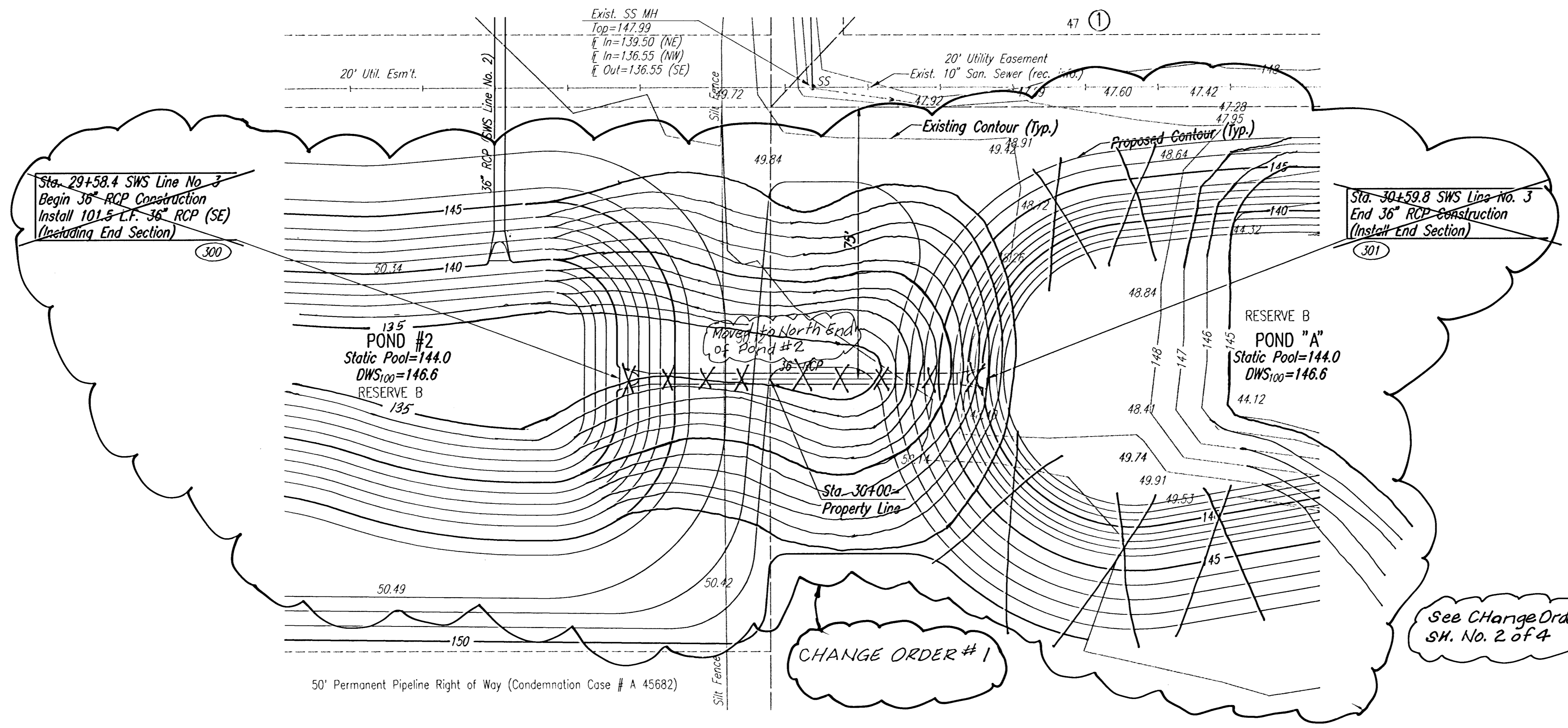


PLAN
 CHECKED
 CHECKED
 BY
 DATE

PROFILE
 CHECKED
 CHECKED
 BY
 DATE

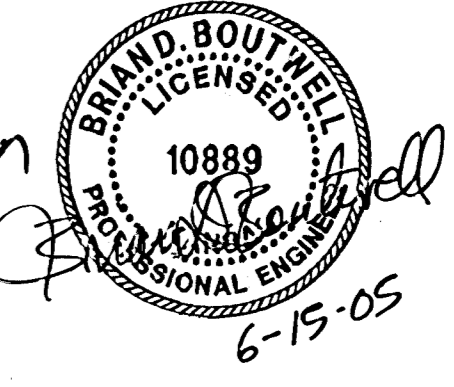
DSNR: BLB OPER: BUS SCALE: 1"=20.00
 01/2005 05258 05258-C-SWSLINE3 06-16-2005 10:54:03 am



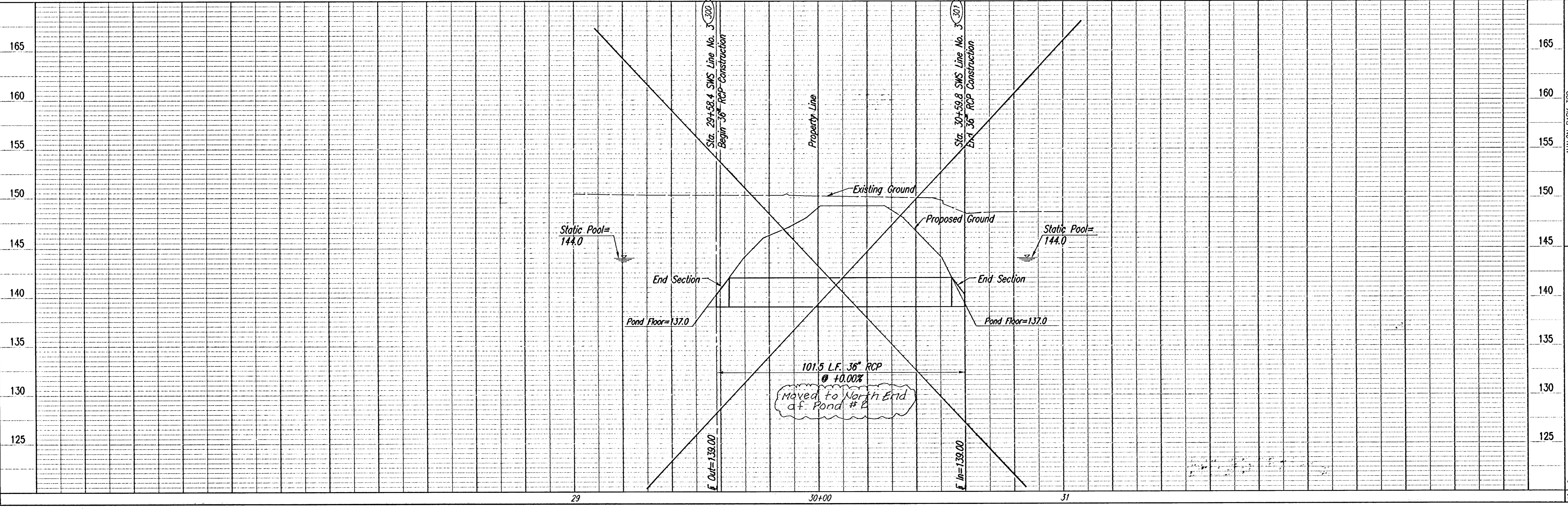
SCALE: 1"=20'

COORDINATE LIST		
POINT	NORTH	EAST
300	11,127.5271	10,880.7774
301	11,049.0691	10,945.1556

300 = COORDINATE POINT NO.
 SEE SHEET NO. 3 FOR PLAT COORDINATES



RECORD DRAWING



Professional Engineering Consultants, P.A.
 303 S. TOPKA • WICHITA, KANSAS 67202
 316-262-2691 • FAX 316-262-3003

Designed By: BOB, BLB
 Drawn By: BUS

Job No.: 05-0258
 Date: February 2005

Professional Engineer Seal: BRIAN D. BOUTWELL, LICENSE NO. 10889, STATE OF KANSAS, 02/06/06

6-15-05

Sheet 12 of 35

Professional Engineering Consultants, P.A.
 303 S. TOPKA • WICHITA, KANSAS 67202
 316-262-2691 • FAX 316-262-3003

Job No.: 05-0258
 Date: February 2005

Professional Engineer Seal: BRIAN D. BOUTWELL, LICENSE NO. 10889, STATE OF KANSAS, 02/06/06

6-15-05

Professional Engineering Consultants, P.A.
 303 S. TOPKA • WICHITA, KANSAS 67202
 316-262-2691 • FAX 316-262-3003

Job No.: 05-0258
 Date: February 2005

Professional Engineer Seal: BRIAN D. BOUTWELL, LICENSE NO. 10889, STATE OF KANSAS, 02/06/06

6-15-05