

GENERAL NOTES

- UNLESS SHOWN OR STATED OTHERWISE ON THESE DRAWINGS, MATERIALS AND CONSTRUCTION SHALL BE IN ACCORDANCE WITH CITY OF WICHITA CONCRETE PAVEMENT AND ASPHALTIC CONCRETE PAVEMENT SPECIFICATIONS.
- CONTRACTOR WILL BE REQUIRED TO PROVIDE A MINIMUM ADVANCE NOTICE OF SEVENTY-TWO (72) HOURS TO UTILITY COMPANIES PRIOR TO STARTING ANY EXCAVATION AS FOLLOWS:
KANSAS ONE-CALL 1-800-344-7233
OR 687-2470 (LOCAL WICHITA)
- THE CONTRACTOR MUST NOTIFY THE FOLLOWING IN CASE OF AN EMERGENCY:
SBC (TELEPHONE) 800-870-8390
COX COMMUNICATIONS (CABLE) 262-0661
WESTAR (ELECTRIC) 383-8600
KANSAS GAS SERVICE (GAS) 832-3101
CITY OF WICHITA WATER & SEWER MAINT. 262-6000
AQUILA (GAS) 946-0098
- THE CONTRACTOR SHALL BE RESPONSIBLE FOR PRESERVING PROPERTY IRONS. THE CONTRACTOR WILL BE REQUIRED TO RE-ESTABLISH ANY PROPERTY IRONS WHICH ARE DAMAGED OR DESTROYED BY HIS CONSTRUCTION OPERATIONS. SUCH IRONS SHALL BE RE-ESTABLISHED BY A LICENSED LAND SURVEYOR IN ACCORDANCE WITH STATE LAWS.
- EXISTING UTILITIES AND THEIR LOCATIONS, AS SHOWN ON THE PLANS REPRESENT THE BEST INFORMATION OBTAINABLE FOR DESIGN. LOCATION INFORMATION HAS BEEN OBTAINED FROM THE VARIOUS UTILITY COMPANIES AND IS EITHER FROM COMPANY RECORD DRAWINGS OR COMPANY PROVIDED FIELD LOCATIONS. THE PLAN LOCATIONS SHOWN ARE NOT GUARANTEED. ADDITIONAL EXISTING UTILITIES MAY ALSO BE ENCOUNTERED.
- RUBBLE FROM THE REMOVAL OF MISCELLANEOUS STRUCTURES AND EXCESS EXCAVATION WHICH IS TO BE WASTED SHALL BE DISPOSED OF ON SITES TO BE PROVIDED BY THE CONTRACTOR. THESE SITES SHALL BE APPROVED BY THE ENGINEER AS TO SUITABILITY, APPEARANCE AND SITE LOCATION. LOCATIONS THAT, IN THE OPINION OF THE ENGINEER, WILL LEAVE AN UNSIGHTLY APPEARANCE WILL NOT BE APPROVED. ALL DISPOSAL SITES MUST BE APPROVED BY THE KANSAS DEPARTMENT OF HEALTH AND ENVIRONMENT. MATERIAL EITHER STOCKPILED OR DISPOSED OF IN A FLOOD PLAIN WOULD REQUIRE A KANSAS STATE BOARD OF AGRICULTURE PERMIT. ANY MATERIAL DUMPED IN WATERS OF THE UNITED STATES OR WETLANDS IS SUBJECT TO U.S. CORPS OF ENGINEERS PERMITTING REGULATIONS. ANY MATERIAL BURIED OR STOCKPILED BEYOND APPROVED CONSTRUCTION LIMITS WOULD REQUIRE ADDITIONAL ARCHAEOLOGICAL INVESTIGATIONS UNLESS BURIED IN A PREVIOUSLY APPROVED BORROW LOCATION.
- THIS PROJECT INCLUDES A CERTAIN AMOUNT OF ROLL TYPE CURB CONSTRUCTION. ROLL CURBS SHALL BE DEPRESSED THROUGH ALL DRIVEWAY OPENINGS WHEN SUCH DRIVES ARE CONSTRUCTED AS A PART OF THE PROJECT. NO MORE THAN 2 DRIVES 20 FEET IN WIDTH OR EQUIVALENT COMBINATIONS THEREOF ARE TO BE CONSTRUCTED WITH THIS PROJECT.
- TRANSITION CURB FROM FULL HEIGHT COMBINATION CURB AND GUTTER TO ROLL TYPE COMBINATION CURB AND GUTTER IS TO BE PAID AS BID FOR LINEAL FEET COMBINED CURB AND GUTTER (3 5/8" ROLL).
- A SAW CUT OF AT LEAST ONE-HALF THE DEPTH OF THE EXISTING SURFACE COURSES OR ONE-FOURTH THE DEPTH OF THE EXISTING TOTAL PAVEMENT THICKNESS SHALL BE PROVIDED AT LOCATIONS WHERE PROPOSED CONSTRUCTION ABUTS AN EXISTING SURFACE OR PAVEMENT FOR WHICH PARTIAL REMOVAL OF THAT SURFACE OR PAVEMENT IS REQUIRED. SAW JOINT TO FACILITATE REMOVAL WITHIN THREE (3) FEET OF EXISTING JOINTS WILL NOT BE PERMITTED AND FOR SUCH INSTANCES THE LIMITS OF REMOVAL SHALL EXTEND TO THE EXISTING JOINT. SUCH SAW CUTS WILL NOT BE PAID FOR DIRECTLY AND THIS COST SHALL BE CONSIDERED AS SUBSIDIARY TO THE REMOVAL OF SURFACE OR PAVEMENT.
- ALL DISTURBED AREAS SHALL BE SEEDED AND MULCHED. SEEDING SHALL BE RYE GRASS AT A RATE OF 200 LBS PER ACRE.
- CONTRACTOR SHALL USE MATERIAL FROM STOCKPILE ON LOT 40, BLK. 1 FOR LOT & ROAD FILL. IF CITY ENG. DETERMINES STOCKPILE MATERIAL UNSUITABLE FOR ROAD FILL CONTRACTOR MAY BORROW FROM EXISTING SITE JUST NORTH OF THE STOCKPILE. CONTRACTOR SHALL STRIP TOPSOIL AND LIMIT EXCAVATION TO 12" BELOW TOPSOIL. CONTRACTOR SHALL USE STOCKPILE MATERIAL TO FILL EXCAVATED AREA, REPLACE TOPSOIL AND RESEED.

LENGTH OF PROJECT	
35' BK.-BK.	714 L.F.
29' BK.-BK.	359 L.F.
EARTHWORK SUMMARY	
EXCAVATION	1040 C.Y.
LOOSE FILL	1250 C.Y.
COMP. FILL	8610 C.Y.
*CONT. FURN.	8820 C.Y.

*SEE NOTE 11 ABOVE

PAVING STREETS IN REED'S COVE ADDITION

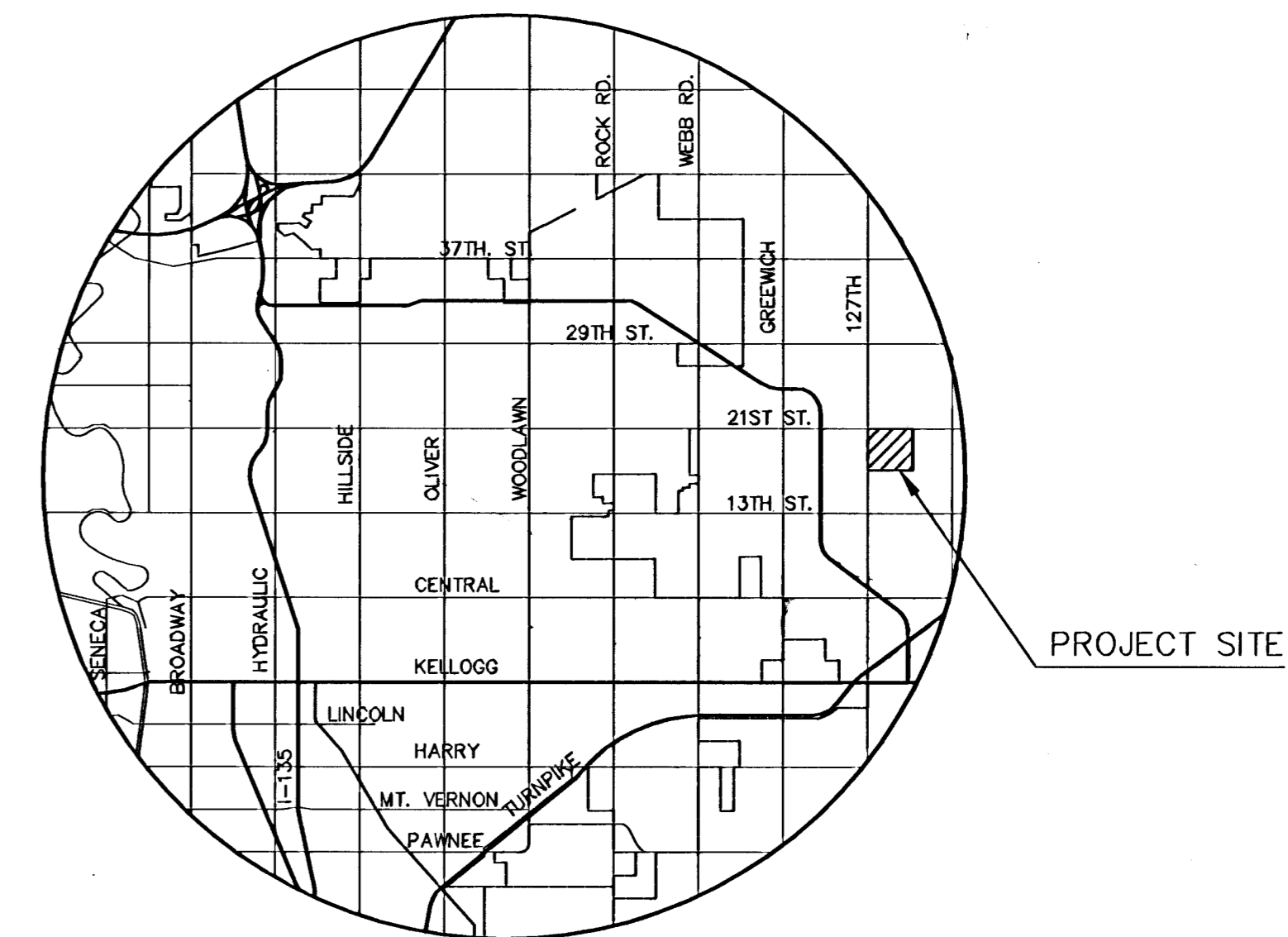
PHASE 2A

AN ADDITION TO THE CITY OF WICHITA
SEDGWICK COUNTY, KANSAS

PROJECT NO. 472-83857

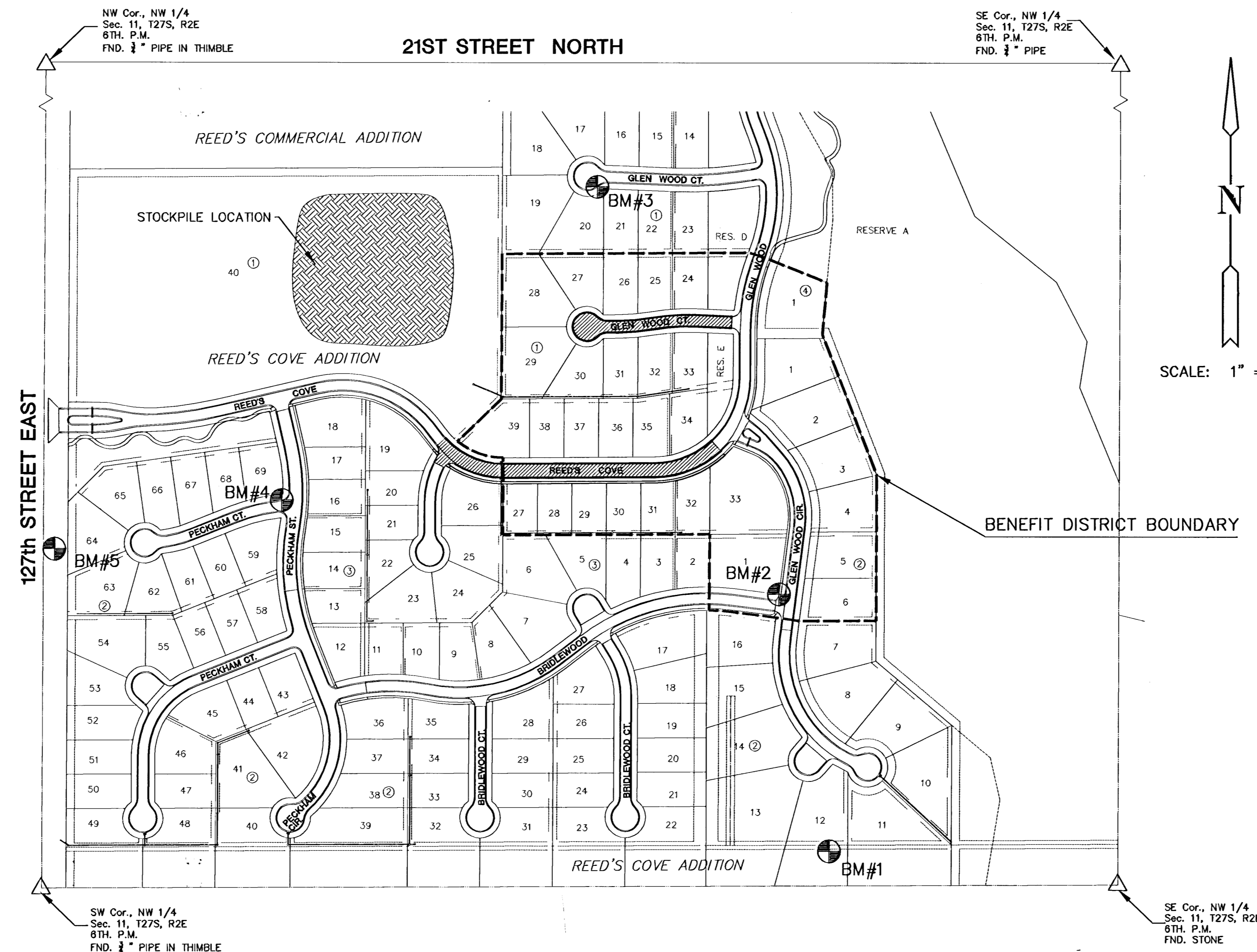
JIM ARMOUR, P.E. - ACTING CITY ENGINEER

OCA - 765918



PROJECT SITE

LOCATION MAP

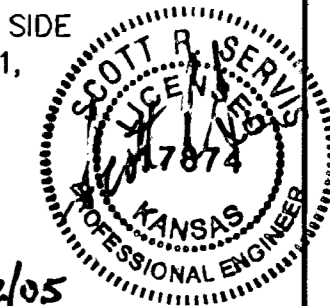


INDEX TO DRAWINGS

SHEET NO.	DESCRIPTION
1	TITLE SHEET
2-3	TYPICAL PAVING SECTIONS
4	VALLEY GUTTER DETAILS
5	WHEELCHAIR RAMP DETAILS
6	SIGNING DETAILS
7	INLET HOOKUP DETAILS
8-10	PAVING PLANS
10A	LOT FILL PLAN
11-13	BMP DETAILS
14-16	CROSS SECTIONS
17	FINAL PLAT

BENCHMARKS

- BM 1 1358.10 RR SPIKE IN N. FACE N. H-POLE, 4TH H-POLE EAST OF 127TH ST. EAST, 1940'+/- E. & 86'+/- NORTH OF W 1/4 COR SEC 11, T 27 S, R 2 E.
- BM 2 1354.30 "T" POST 15'+/- N. & 15'+/- W. OF SE COR LOT 1 BLOCK 3, REED'S COVE.
- BM 3 1362.04 "□" CHISELED SQUARE ON TOP OF CURB AT THE NE CORNER OF LOT 20, BLK. 1, REED'S COVE.
- BM 4 1375.44 BRASS DISK IN TOP OF CURB AT SE RETURN OF LOT 69, BLK. 2, REED'S COVE.
- BM 5 1364.99 RR SPIKE IN W. FACE 4TH PP NORTH OF RR TRACKS ON EAST SIDE OF 127TH ST. EAST, 837'+/- NORTH & 27'+/- EAST OF W COR SEC 11, T 27 S, R 2 E.



REED'S COVE ADDITION - PHASE 2A
PROJECT NAME

MKEC ENGINEERING CONSULTANTS
SHEET TITLE

DESIGN BY: DMU DRAWN BY: DFL CHECKED BY: DFL

JANUARY 2005 DATE JOB NO. 02121_ET SHEET/OF 1 / 17