

STREET PAVING FOR AUBURN HILLS WITH INCIDENTAL STORM WATER SEWER to serve

AUBURN HILLS 15TH ADDITION - PHASE 2A

**Auburn Hills, from the south line of Lot 49, Block B, north to the south line of Lot 42, Block B
Auburn Hills Ct, from the south line Auburn Hills to and including the cul-de-sac (Lots 43-50, Block B)
Auburn Hills Ct, from the north line Auburn Hills to and including the cul-de-sac (Lots 10-13, Block D)**

CITY OF WICHITA, KANSAS

James L. Armour, P.E. City Engineer

Project Number

472-83931

O.C.A. Number

765925

Sheet Index

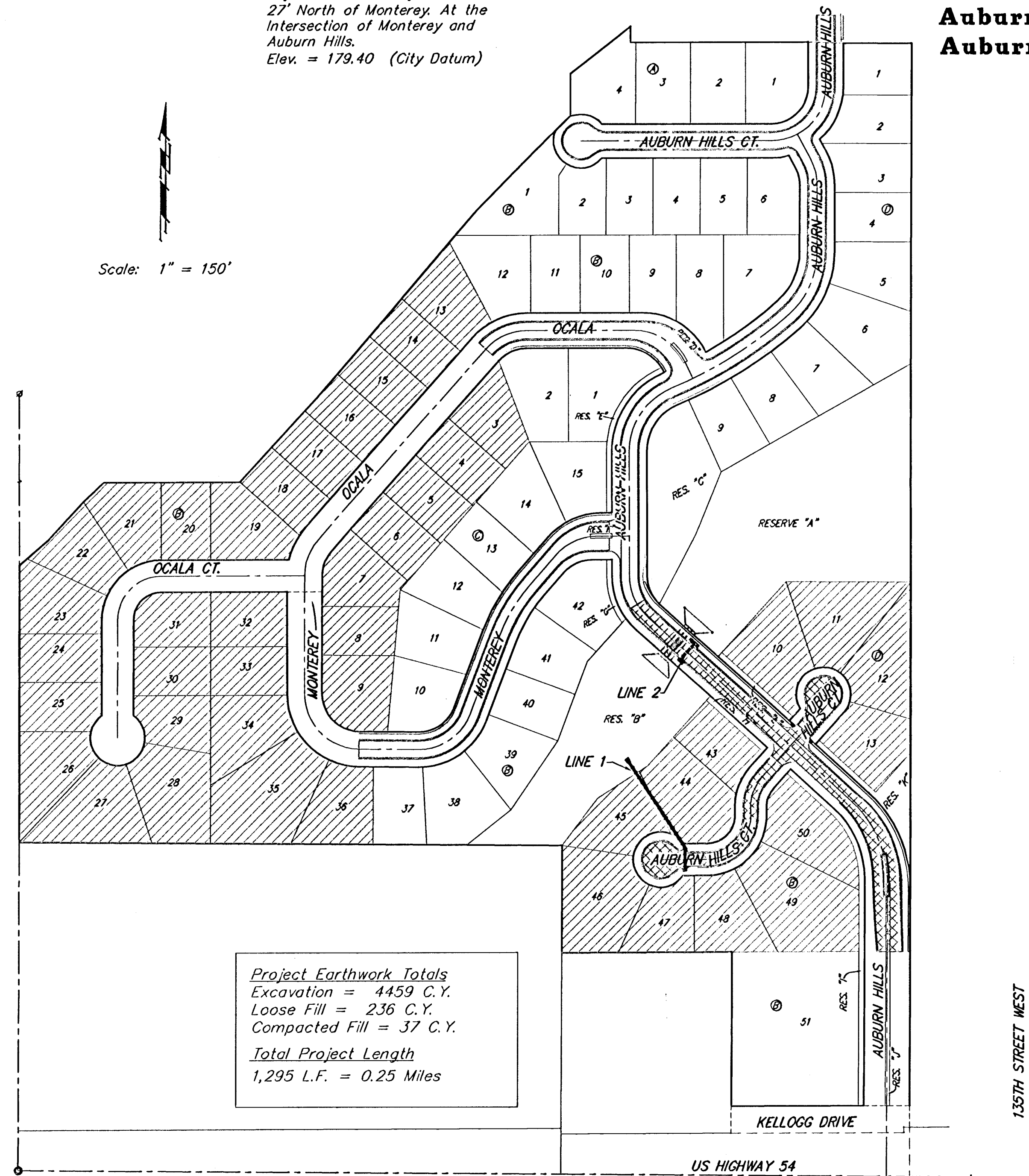
Title Sheet	1
35' Pavement Detail	2
29' Pavement Detail	3
Sign Detail	4
Miscellaneous Detail	5
Entrance Detail	6
Auburn Hills	7-8
Auburn Hills Ct. (Lots 43-50, Block B)	9
Auburn Hills Ct. (Lots 10-13, Block D)	10
SWS Lines 1 & 2	11
Std. Type 1A Single Curb Inlet	12
Std. Type 1A Double Curb Inlet	13
RC Headwall Detail	14
Erosion Control Plan	15
Erosion Control BMP's	16-19
Earthwork Cross Sections	20-24
Copy of Plat	25

Benchmarks

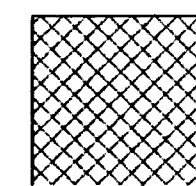
City Disc In T.C. Adj. to F.H.
17.5' North of Monterey. At the
South West Corner of Lot 10
Block C Auburn Hills 15th
Addition.
Elev. = 177.39 (City Datum)

City Disc In T.C. Adj. to F.H.
27' North of Monterey. At the
Intersection of Monterey and
Auburn Hills.
Elev. = 179.40 (City Datum)

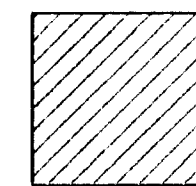
Scale: 1" = 150'



Proposed Streets:

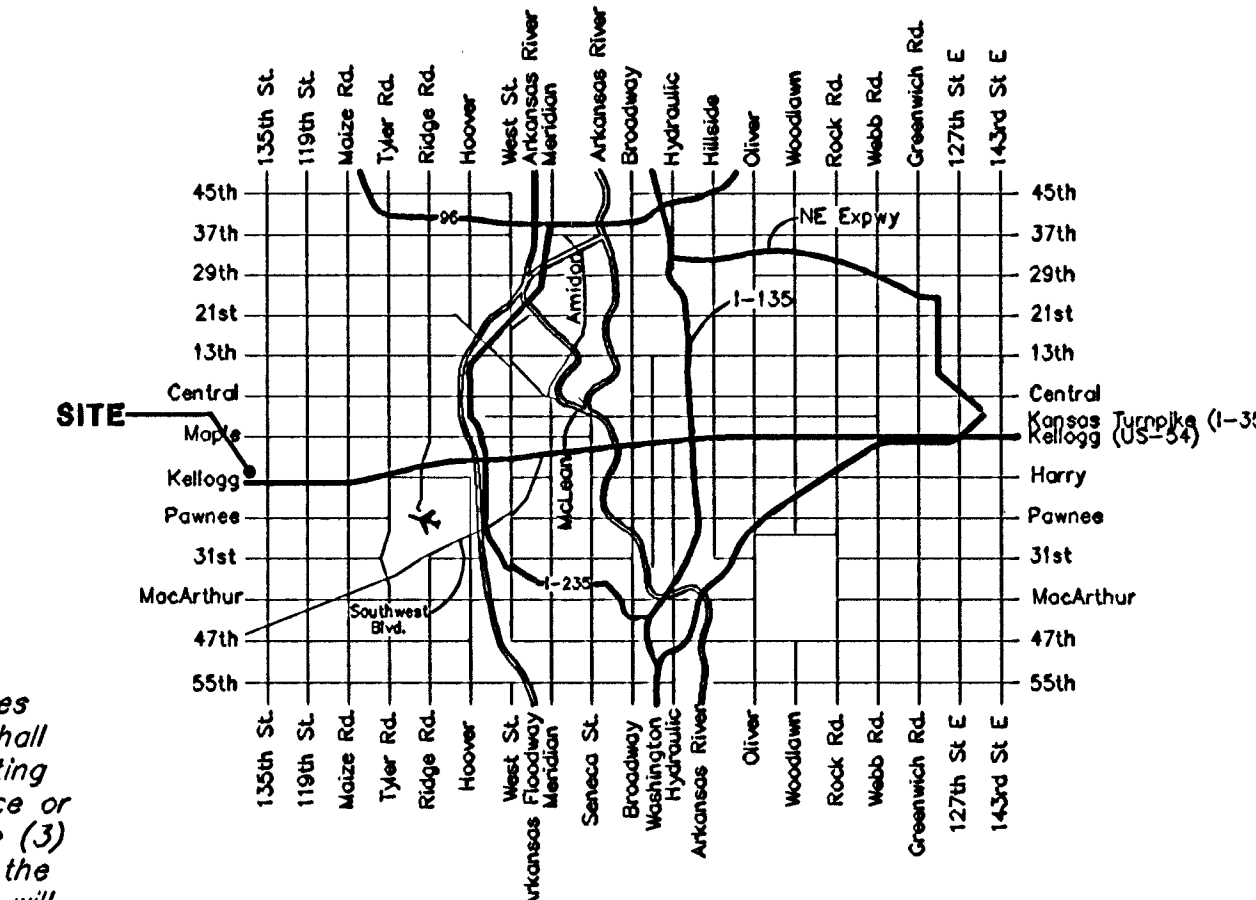


Benefit District:

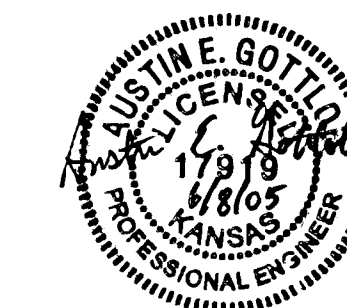


GENERAL NOTES:

- Contractor will be required to provide notice to utility companies a minimum of twenty-four (24) hours prior to any excavation, as follows:
Kansas One-Call 687-2470
The Contractor must notify the following in case of an emergency:
Cox Communications 262-4270
Kansas Gas Service 1-888-482-4950
Westor Energy 383-8650
Aquila Energy 1-800-303-0357
SBC 269-2245
City of Wichita Water Dept. 268-4563
City of Wichita Sewer Maint. 268-4024
City of Wichita Storm Sewer Maint. 268-4090
City of Wichita Traffic Maint. 268-4034
Conoco Pipeline Co. 1-800-231-2551
Southern Star Pipeline Co. 529-6600
Phillips Pipeline Co. 1-800-766-8230
Jayhawk Pipeline Co. 1-888-542-9575
- Utility service lines, poles, valve boxes, meters, and etcetera are to be adjusted as necessary by others prior to construction unless the plans specifically call for their adjustment by the Contractor or unless the plans specifically identify a utility to be adjusted by its owner during construction. Existing utilities and their location, as shown on the plans, represent the best information obtainable for design. The contractor will be required to work around existing utilities within the right-of-way which do not conflict with proposed construction.
- Trees and shrubs in public right-of-way which are in direct conflict with proposed new construction shall be removed by the Contractor with the Engineer's approval. Trees and shrubs which are not in direct conflict with proposed new construction shall be saved and protected from damage.
- All areas disturbed during construction within Reserves and Street R/W's adjacent to existing pavement shall be seeded, mulched, and fertilized as follows unless otherwise noted (Permanent Seeding):
Seed: Kansas Premium Fescue Blend: 8 lbs./1000 sq. ft.
Mulch: Prairie Hay: 2 tons/acre
Fertilizer: 12-24-12: 850 lbs./acre
All other areas disturbed during construction shall be seeded and mulched as follows (Temporary Seeding):
Seed: Rye Grass: 5 lbs./1000 Sq. Ft.
Mulch: Prairie Hay: 2 tons/acre
All costs associated with seeding, mulching, and fertilizing shall be included in bid item "Project Seeding." All seeding operations shall conform to City of Wichita Standard Specifications.
- Rubble from the removal of miscellaneous structures and excess excavation which is to be wasted shall be disposed of on sites to be provided by the Contractor. These sites shall be approved by the Engineer as to suitability, appearance and site location. Locations that, in the opinion of the Engineer, will leave an unsightly appearance will not be approved. All disposal sites must be approved by the Kansas Department of Health and Environment. Material either stockpiled or disposed of in a flood plain would a Kansas State Board of Agriculture permit. Any material dumped in waters of the United States or wetlands is subject to U.S. Corps. of Engineers permitting regulations. Any material buried or stockpiled beyond approved construction limits would require additional archaeological investigations unless buried in a previously approved borrow location.
- The Contractor shall be responsible for preserving property irons. The Contractor will be required to re-establish any property irons which are damaged or destroyed by his construction operations. Such irons shall be re-established by a licensed land surveyor in accordance with state law.
- A saw cut of at least one-half the depth of existing surface courses or one-fourth the depth of the existing total pavement thickness shall be provided at locations where proposed construction abuts an existing surface course or pavement for which partial removal of that surface or pavement is required. Sawed joint to facilitate removal within three (3) feet of existing joints will not be permitted and for such instances the limits of removal shall extend to the existing joint. Such saw cuts will not be paid for directly and this cost shall be considered as subsidiary to the removal of the surface or pavement.
- All existing and proposed erosion control measures including silt fencing, erosion control mat, straw bales, inlet barriers, and const. entrance shall be maintained throughout construction by the contractor and until project is accepted by the City of Wichita. The on-site engineer shall complete weekly reports on the status of erosion control measures. The contractor shall be required to comply with maintenance only for replacement of erosion control measures as determined by the on-site engineer until project is accepted by City of Wichita.
- The developer for this project is Jay W. Russell, and may be reached at (316)722-2417.
- Mass Grading will be completed prior to construction of this project. A shortage of material will occur on the mass grading project. The street contractor shall be required to fill street right-of-way to 95% an additional 4,500 C.Y. in addition to fill shown on the cross sections. Fill material will be available on-site.
- All excess excavation shall remain on-site and be spread or stockpiled at a location determined by the engineer.



Vicinity Map



As Built - 11/1/05 KV



Baughman Company, P.A. 315 Ellis St. Wichita, KS 67211 P 316-262-7271 F 316-262-0147
ENGINEERING | SURVEYING | PLANNING | LANDSCAPE ARCHITECTURE